

Preliminary statistics on the international trade in goods February 2024

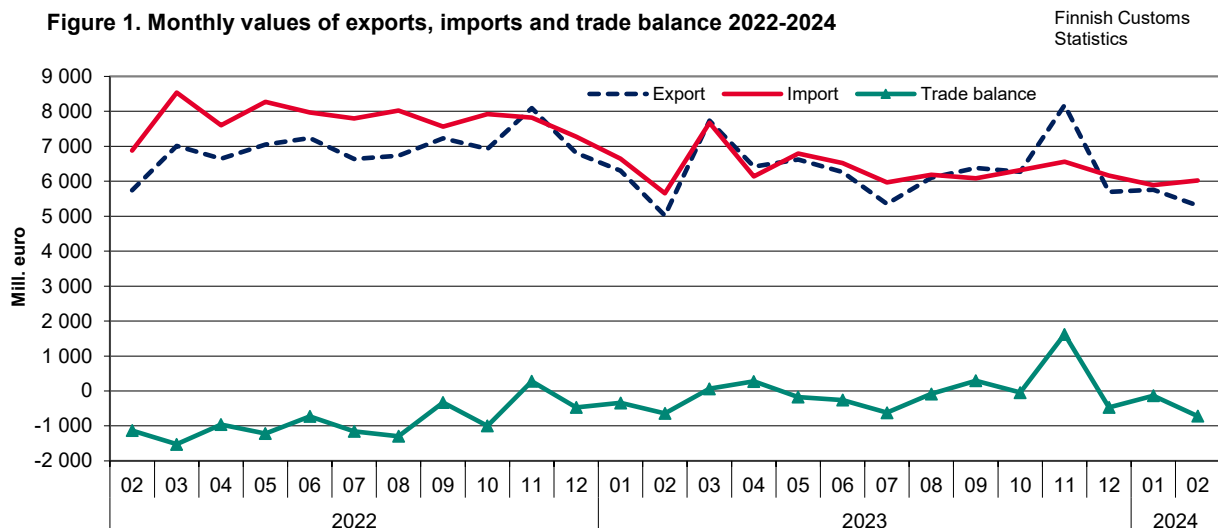
Export prices decreased by 4.6 per cent, export volume increased by 12.1 per cent in February according to preliminary data

According to the preliminary statistics of international trade in goods provided by Finnish Customs, the value of Finnish exports increased by 5.8 per cent in February year-on-year. The value of Finnish exports in February was EUR 5.3 billion. Export volume increased by 12.1 per cent, but export prices declined by 4.6 per cent year-on-year.

The value of imports increased by 6.5 per cent in February and the value of imports was EUR 6.0 billion. Import prices declined by 5.7 per cent, but import volume increased by 12.3 per cent compared to February 2023. During the reference month in 2023 a harbour strike reduced international trade in goods considerable. Compared to previous month, January 2024, the value of exports decreased by 7.8 per cent, but the value of imports increased by 2.3 per cent in February 2024.

In January-February 2023, the total value of exports decreased by 2.3 per cent and the value of imports by 3.1 per cent year-on-year. Change of export volume during the latest 12 months was -0.7 per cent (12 month moving average March 2023 – February 2024). The corresponding figure for import volume was -8.4 per cent.

The trade balance was in deficit of EUR 720 million in February. In January-February, the aggregated deficit amounted to EUR 855 million. In February 2023, the trade balance was EUR 640 million in deficit and in January-February of the same year, the aggregated deficit was EUR 980 million.



Helsinki 8.4.2024. Free for publication at 9.00 a.m.

Quoting is encouraged provided Finnish Customs is acknowledged as the source.

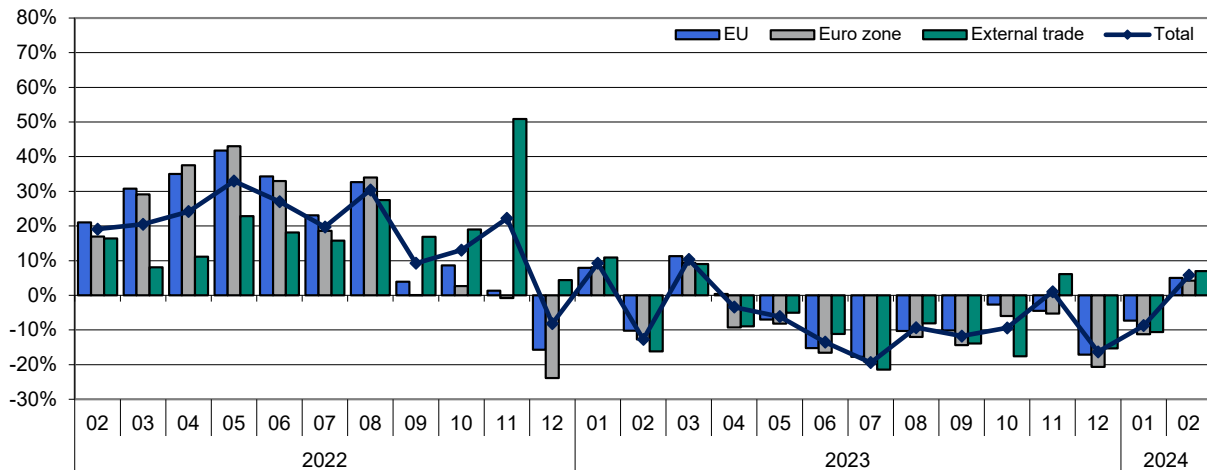
Volume of both internal and external exports increased

Value of exports to EU member states increased by 5.0 per cent and to non-EU countries by 6.9 per cent in February compared to the same month the previous year. The volume of exports to EU countries increased by 13.2 per cent and to non-EU countries by 9.8 per cent during the same time.

Calculated from the beginning of the year, value of exports to EU countries decreased by 1.7 per cent and to non-EU countries by 3.2 per cent. The volume of exports to EU member states increased by 1.6 per cent, but the volume of exports to non-EU countries decreased by 3.7 per cent calculated according to 12-month moving average.

Figure 2. Change of export values by month compared with the same month of the previous year 2022-2024

Finnish Customs Statistics

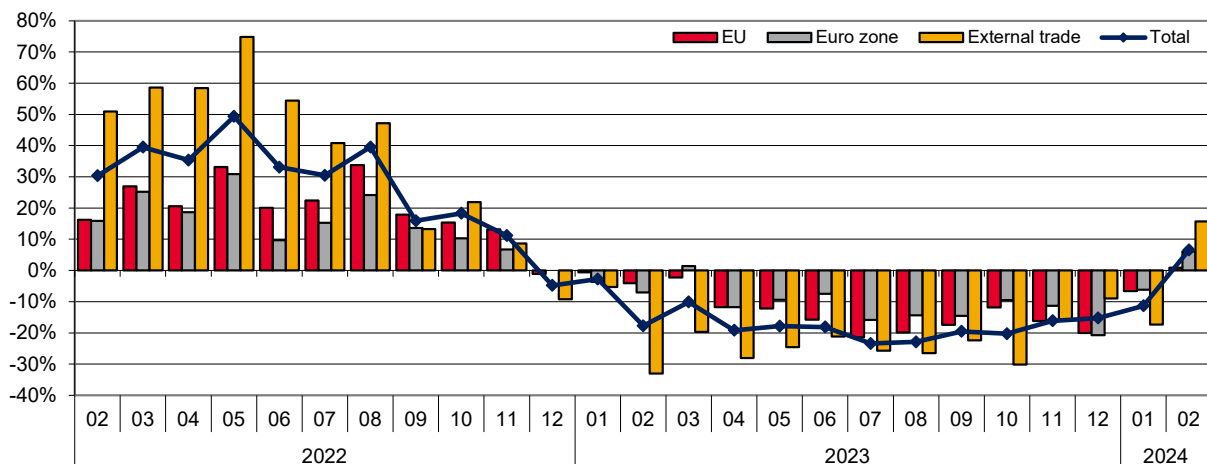


Value of imports from EU countries increased by 0.9 per cent and from non-EU countries by 15.7 per cent in February. The volume of imports from EU member states increased by 5.2 per cent and from non-EU countries by 37.7 per cent.

Calculated from the beginning of the year, value of imports from EU member states decreased by 3.0 per cent and from other countries by 3.3 per cent. The volume of imports from EU member states decreased by 4.7 per cent, and the volume of imports from non-EU countries by 12.7 per cent calculated according to 12-month moving average.

Figure 3. Change of import values by month compared with the same month of the previous year 2022-2024

Finnish Customs Statistics



In this publication preliminary statistics under table 6 are listed export and import values and percentage change by country. The values in the table are preliminary and significant changes are possible when data becomes more complete.

Table 1: Exports 2022-2024, million euro

Month	Total			EU total			Euro zone			External trade		
	2022	2023*	2024*	2022	2023*	2024*	2022	2023*	2024*	2022	2023*	2024*
1	5 772	6 305	5 755	3 303	3 565	3 305	2 220	2 400	2 130	2 470	2 740	2 450
2	5 745	5 015	5 305	3 340	3 000	3 150	2 285	1 995	2 080	2 405	2 015	2 155
3	7 010	7 735		4 161	4 630		2 885	3 155		2 849	3 105	
4	6 641	6 415		3 934	3 950		2 772	2 515		2 708	2 465	
5	7 053	6 620		4 015	3 735		2 793	2 565		3 038	2 885	
6	7 239	6 260		4 183	3 545		2 876	2 400		3 056	2 715	
7	6 640	5 350		3 673	3 020		2 549	2 060		2 967	2 330	
8	6 729	6 100		3 850	3 455		2 632	2 315		2 879	2 645	
9	7 232	6 380		4 050	3 640		2 773	2 375		3 182	2 740	
10	6 922	6 270		3 791	3 690		2 505	2 355		3 131	2 580	
11	8 093	8 175		3 885	3 710		2 649	2 510		4 208	4 465	
12	6 806	5 695		3 908	3 240		2 747	2 180		2 898	2 455	
February	5 745	5 015	5 305	3 340	3 000	3 150	2 285	1 995	2 080	2 405	2 015	2 155
Change		-12,7 %	5,8 %		-10,2 %	5,0 %		-12,7 %	4,3 %		-16,2 %	6,9 %
Cum. 1-2	11 517	11 320	11 060	6 643	6 565	6 455	4 505	4 395	4 210	4 875	4 755	4 605
Change		-1,7 %	-2,3 %		-1,2 %	-1,7 %		-2,4 %	-4,2 %		-2,5 %	-3,2 %

Table 2: Imports 2022-2024, million euro

Month	Total			EU total			Euro zone			External trade		
	2022	2023*	2024*	2022	2023*	2024*	2022	2023*	2024*	2022	2023*	2024*
1	6 834	6 645	5 890	3 728	3 705	3 460	2 424	2 335	2 190	3 106	2 940	2 430
2	6 874	5 655	6 025	3 640	3 490	3 520	2 383	2 215	2 350	3 234	2 165	2 505
3	8 533	7 670		4 692	4 585		3 057	3 100		3 842	3 085	
4	7 600	6 140		4 130	3 645		2 737	2 415		3 470	2 495	
5	8 269	6 795		4 505	3 955		2 926	2 650		3 764	2 840	
6	7 965	6 520		4 463	3 760		2 740	2 535		3 502	2 760	
7	7 795	5 970		4 129	3 245		2 532	2 130		3 666	2 725	
8	8 023	6 185		4 362	3 495		2 656	2 275		3 661	2 690	
9	7 562	6 085		4 346	3 590		2 739	2 340		3 215	2 495	
10	7 923	6 315		4 272	3 765		2 707	2 450		3 650	2 550	
11	7 816	6 555		4 506	3 775		2 790	2 475		3 310	2 780	
12	7 275	6 165		4 140	3 310		2 680	2 125		3 135	2 855	
February	6 874	5 655	6 025	3 640	3 490	3 520	2 383	2 215	2 350	3 234	2 165	2 505
Change		-17,7 %	6,5 %		-4,1 %	0,9 %		-7,0 %	6,1 %		-33,1 %	15,7 %
Cum. 1-2	13 708	12 300	11 915	7 368	7 195	6 980	4 807	4 550	4 540	6 340	5 105	4 935
Change		-10,3 %	-3,1 %		-2,3 %	-3,0 %		-5,3 %	-0,2 %		-19,5 %	-3,3 %

Table 3: Trade balance 2022-2024, million euro

Month	Total			EU total			Euro zone			External trade		
	2022	2023*	2024*	2022	2023*	2024*	2022	2023*	2024*	2022	2023*	2024*
1	-1 062	-340	-135	-425	-140	-155	-203	65	-60	-637	-200	20
2	-1 130	-640	-720	-301	-490	-370	-98	-220	-270	-829	-150	-350
3	-1 523	65		-531	45		-172	55		-992	20	
4	-959	275		-196	305		35	100		-762	-30	
5	-1 216	-175		-490	-220		-133	-85		-726	45	
6	-726	-260		-280	-215		136	-135		-446	-45	
7	-1 155	-620		-456	-225		18	-70		-699	-395	
8	-1 294	-85		-512	-40		-24	40		-782	-45	
9	-329	295		-296	50		34	35		-33	245	
10	-1 000	-45		-481	-75		-202	-95		-519	30	
11	277	1 620		-621	-65		-141	35		898	1 685	
12	-469	-470		-232	-70		67	55		-237	-400	
Cum. 1-2	-2 192	-980	-855	-726	-630	-525	-301	-155	-330	-1 466	-350	-330

*preliminary data

Table 4: Seasonally adjusted values (mill. euro) of export and import, as well as the change (%) from previous month**Seasonally adjusted¹ export**

Year	Month	Total	Change	EU total	Change	Euro zone	Change	External trade	Change
2022	1	6 275		3 556		2 416		2 719	
	2	6 186	-1,4	3 535	-0,6	2 410	-0,2	2 651	-2,5
	3	6 339	2,5	3 691	4,4	2 553	5,9	2 648	-0,1
	4	6 743	6,4	3 976	7,7	2 784	9,0	2 767	4,5
	5	6 839	1,4	3 868	-2,7	2 689	-3,4	2 970	7,3
	6	6 960	1,8	4 062	5,0	2 780	3,4	2 899	-2,4
	7	7 283	4,6	4 178	2,9	2 830	1,8	3 105	7,1
	8	6 875	-5,6	3 968	-5,0	2 751	-2,8	2 906	-6,4
	9	6 822	-0,8	3 833	-3,4	2 645	-3,9	2 989	2,8
	10	6 799	-0,3	3 686	-3,8	2 484	-6,1	3 113	4,2
	11	7 674	12,9	3 662	-0,7	2 493	0,4	4 012	28,9
	12	6 847	-10,8	3 998	9,2	2 771	11,1	2 849	-29,0
2023	1	6 605	-3,5	3 703	-7,4	2 507	-9,5	2 903	1,9
	2	5 398	-18,3	3 176	-14,2	2 106	-16,0	2 222	-23,5
	3	6 991	29,5	4 104	29,2	2 789	32,4	2 888	30,0
	4	6 764	-3,2	4 141	0,9	2 632	-5,6	2 623	-9,2
	5	6 418	-5,1	3 600	-13,1	2 472	-6,1	2 818	7,4
	6	6 022	-6,2	3 445	-4,3	2 322	-6,1	2 577	-8,5
	7	5 881	-2,3	3 440	-0,1	2 290	-1,4	2 441	-5,3
	8	6 227	5,9	3 556	3,4	2 417	5,6	2 671	9,4
	9	6 242	0,3	3 572	0,5	2 365	-2,2	2 671	-0,0
	10	5 924	-5,1	3 458	-3,2	2 238	-5,4	2 467	-7,6
	11	7 752	30,8	3 495	1,1	2 360	5,5	4 257	72,6
	12	6 170	-20,4	3 567	2,1	2 396	1,5	2 603	-38,9
2024	1	5 809	-5,9	3 312	-7,2	2 131	-11,1	2 497	-4,1
	2	5 658	-2,6	3 305	-0,2	2 170	1,8	2 354	-5,7

Seasonally adjusted¹ import

Year	Month	Total	Change	EU total	Change	Euro zone	Change	External trade	Change
2022	1	7 340		4 128		2 748		3 211	
	2	7 259	-1,1	3 798	-8,0	2 464	-10,3	3 461	7,8
	3	7 782	7,2	4 241	11,7	2 714	10,2	3 541	2,3
	4	7 743	-0,5	4 155	-2,0	2 722	0,3	3 588	1,3
	5	8 092	4,5	4 294	3,3	2 764	1,5	3 798	5,8
	6	7 895	-2,4	4 276	-0,4	2 602	-5,9	3 620	-4,7
	7	8 210	4,0	4 535	6,1	2 779	6,8	3 675	1,5
	8	8 076	-1,6	4 500	-0,8	2 776	-0,1	3 576	-2,7
	9	7 349	-9,0	4 194	-6,8	2 649	-4,6	3 155	-11,8
	10	7 790	6,0	4 239	1,1	2 717	2,6	3 551	12,5
	11	7 584	-2,6	4 341	2,4	2 694	-0,9	3 243	-8,7
	12	7 197	-5,1	4 105	-5,4	2 671	-0,8	3 091	-4,7
2023	1	6 937	-3,6	3 971	-3,3	2 561	-4,1	2 966	-4,1
	2	5 962	-14,1	3 646	-8,2	2 292	-10,5	2 316	-21,9
	3	6 986	17,2	4 140	13,6	2 750	20,0	2 845	22,9
	4	6 428	-8,0	3 784	-8,6	2 484	-9,7	2 644	-7,1
	5	6 635	3,2	3 767	-0,5	2 502	0,7	2 868	8,5
	6	6 445	-2,9	3 595	-4,6	2 410	-3,7	2 850	-0,6
	7	6 300	-2,3	3 567	-0,8	2 338	-3,0	2 733	-4,1
	8	6 237	-1,0	3 608	1,2	2 378	1,7	2 629	-3,8
	9	6 088	-2,4	3 577	-0,9	2 342	-1,5	2 511	-4,5
	10	6 041	-0,8	3 622	1,2	2 375	1,4	2 419	-3,7
	11	6 362	5,3	3 638	0,5	2 387	0,5	2 724	12,6
	12	6 456	1,5	3 497	-3,9	2 266	-5,1	2 959	8,6
2024	1	5 983	-7,3	3 591	2,7	2 320	2,4	2 392	-19,1
	2	6 297	5,2	3 637	1,3	2 408	3,8	2 660	11,2

Table 5: Trend figures (mill. euro) of export and import, as well as the change (%) from previous month

Trend figures of export¹

Year	Month	Total	Change	EU total	Change	Euro zone	Change	External trade	Change
2022	1	6 225		3 572		2 466		2 653	
	2	6 318	1,5	3 638	1,8	2 508	1,7	2 680	1,0
	3	6 443	2,0	3 724	2,4	2 573	2,6	2 719	1,4
	4	6 612	2,6	3 819	2,5	2 641	2,6	2 793	2,7
	5	6 774	2,4	3 899	2,1	2 686	1,7	2 875	2,9
	6	6 909	2,0	3 972	1,9	2 713	1,0	2 937	2,1
	7	6 966	0,8	3 994	0,5	2 718	0,2	2 972	1,2
	8	6 914	-0,7	3 934	-1,5	2 692	-1,0	2 980	0,3
	9	6 846	-1,0	3 855	-2,0	2 646	-1,7	2 991	0,4
	10	6 798	-0,7	3 803	-1,3	2 607	-1,5	2 995	0,1
	11	6 752	-0,7	3 796	-0,2	2 600	-0,3	2 956	-1,3
	12	6 722	-0,4	3 814	0,5	2 608	0,3	2 909	-1,6
2023	1	6 703	-0,3	3 824	0,3	2 606	-0,1	2 878	-1,1
	2	6 697	-0,1	3 848	0,6	2 607	0,1	2 849	-1,0
	3	6 649	-0,7	3 849	0,0	2 601	-0,2	2 800	-1,7
	4	6 507	-2,1	3 765	-2,2	2 556	-1,7	2 742	-2,0
	5	6 335	-2,6	3 644	-3,2	2 485	-2,8	2 691	-1,9
	6	6 187	-2,3	3 561	-2,3	2 420	-2,6	2 627	-2,4
	7	6 114	-1,2	3 527	-0,9	2 382	-1,6	2 587	-1,5
	8	6 121	0,1	3 526	-0,0	2 364	-0,7	2 595	0,3
	9	6 116	-0,1	3 528	0,1	2 344	-0,9	2 588	-0,3
	10	6 064	-0,9	3 509	-0,5	2 322	-0,9	2 555	-1,3
	11	6 019	-0,7	3 479	-0,8	2 309	-0,6	2 540	-0,6
	12	5 977	-0,7	3 451	-0,8	2 285	-1,1	2 526	-0,5
2024	1	5 895	-1,4	3 411	-1,1	2 248	-1,6	2 484	-1,7
	2	5 820	-1,3	3 381	-0,9	2 227	-0,9	2 439	-1,8

Trend figures of import¹

Year	Month	Total	Change	EU total	Change	Euro zone	Change	External trade	Change
2022	1	7 230		3 954		2 576		3 276	
	2	7 413	2,5	4 016	1,6	2 607	1,2	3 397	3,7
	3	7 597	2,5	4 092	1,9	2 640	1,3	3 504	3,1
	4	7 754	2,1	4 166	1,8	2 671	1,2	3 587	2,4
	5	7 871	1,5	4 235	1,6	2 685	0,5	3 636	1,4
	6	7 934	0,8	4 304	1,6	2 692	0,3	3 630	-0,2
	7	7 931	-0,0	4 349	1,0	2 700	0,3	3 582	-1,3
	8	7 824	-1,3	4 336	-0,3	2 700	-0,0	3 488	-2,6
	9	7 674	-1,9	4 281	-1,3	2 686	-0,5	3 393	-2,7
	10	7 563	-1,5	4 231	-1,2	2 670	-0,6	3 332	-1,8
	11	7 414	-2,0	4 175	-1,3	2 647	-0,9	3 239	-2,8
	12	7 202	-2,9	4 088	-2,1	2 612	-1,3	3 115	-3,8
2023	1	6 998	-2,8	3 990	-2,4	2 568	-1,7	3 008	-3,4
	2	6 843	-2,2	3 921	-1,7	2 537	-1,2	2 923	-2,8
	3	6 722	-1,8	3 875	-1,2	2 526	-0,5	2 846	-2,6
	4	6 614	-1,6	3 815	-1,6	2 504	-0,8	2 799	-1,7
	5	6 535	-1,2	3 741	-1,9	2 470	-1,4	2 794	-0,2
	6	6 455	-1,2	3 679	-1,7	2 435	-1,4	2 776	-0,6
	7	6 358	-1,5	3 640	-1,1	2 406	-1,2	2 718	-2,1
	8	6 266	-1,4	3 622	-0,5	2 387	-0,8	2 644	-2,7
	9	6 201	-1,0	3 614	-0,2	2 375	-0,5	2 587	-2,2
	10	6 198	-0,0	3 610	-0,1	2 368	-0,3	2 588	0,1
	11	6 255	0,9	3 604	-0,2	2 360	-0,3	2 651	2,4
	12	6 271	0,3	3 599	-0,1	2 353	-0,3	2 672	0,8
2024	1	6 234	-0,6	3 605	0,2	2 357	0,2	2 628	-1,6
	2	6 233	-0,0	3 618	0,3	2 369	0,5	2 616	-0,5

Figure 4. Exports 2022-2024 (original, seasonally adjusted and trend)

Finnish Customs Statistics

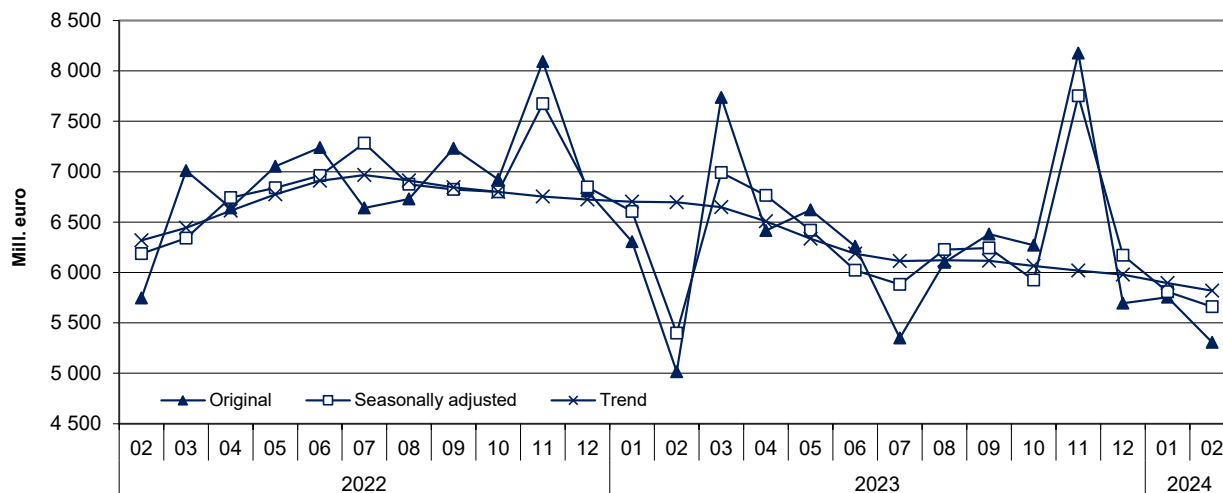
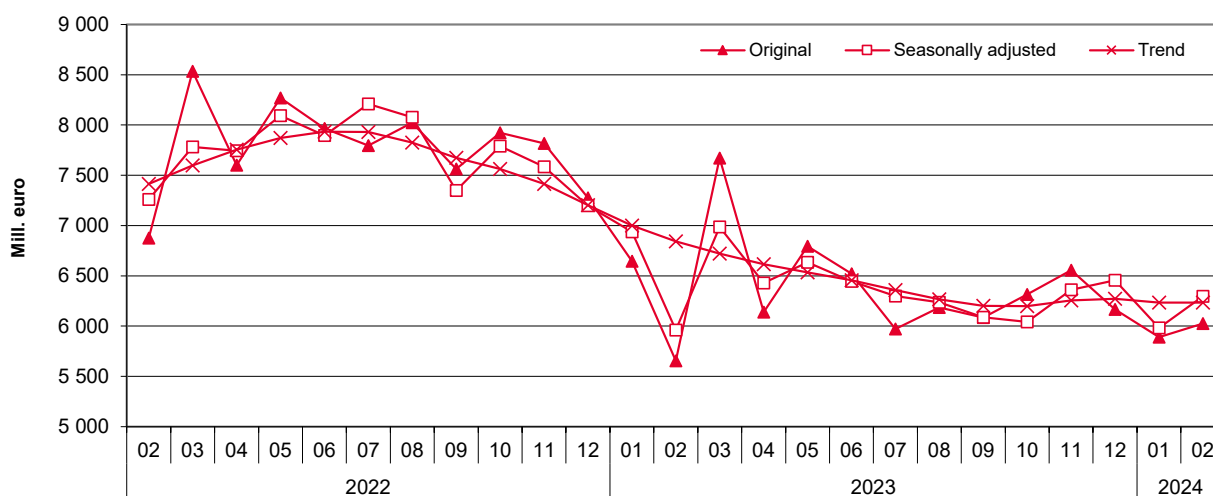


Figure 5. Imports 2022-2024 (original, seasonally adjusted and trend)

Finnish Customs Statistics



¹ Seasonal adjustment is a statistical technique to remove the effects of seasonal calendar influences operating on time series. In trend series, also irregular fluctuations have been filtered off. The TRAMO/SEATS method recommended by Eurostat has been implemented in the seasonal adjustment of the international trade series. Starting July 2019, the JDemetra+2.2.2 program version has been implemented in calculating seasonal adjustments. Data starting year 2010 is used in calculation.

Table 6. Exports and imports by country (main trading partners), preliminary value and change year-on-year *

Origin/ destination	Exports 2024		Imports 2024	
	February		February	
	preliminary value MEUR	change %	preliminary value MEUR	change %
Total exports / imports	5 305	5,8	6 025	6,5
DE Germany	576,4	8,2	911,3	12,1
SE Sweden	535,9	-6,6	675,2	-11,4
US United States of America	473,5	-0,1	330,0	44,1
NL Netherlands	428,7	2,1	328,9	11,6
CN China	240,9	15,3	489,8	8,2
NO Norway	168,7	2,4	467,6	18,0
PL Poland	323,6	44,3	202,4	-10,7
GB United Kingdom	170,3	-8,0	264,3	40,4
BE Belgium	237,4	39,7	135,2	13,9
FR France	190,8	16,4	161,3	16,2
EE Estonia	166,1	-22,0	179,3	-36,4
IT Italy	146,9	1,6	177,6	2,7
DK Denmark	97,0	1,1	123,7	-10,2
ES Spain	88,7	3,6	129,9	25,3
CA Canada	58,8	-23,2	92,6	226,8
JP Japan	87,3	30,8	63,1	0,3
TR Türkiye	86,1	47,3	63,8	7,4
CH Switzerland	86,4	-27,2	54,5	5,5
CZ Czechia	41,4	2,7	85,0	4,2
KR South Korea	41,4	24,3	81,7	2,2
RU Russia	43,2	-51,1	72,8	-38,4
AT Austria	44,9	14,6	60,4	-3,6
IN India	47,5	-33,1	55,0	32,0
LV Latvia	58,1	-18,3	42,3	0,7
PT Portugal	19,0	-1,8	77,0	214,9

* The values in the table are preliminary and significant changes are possible when data becomes more complete

Preliminary statistics on the international trade in goods, February 2024
2023:E02EN, 8.4.2024

Inquiries:

Kaarna, Anssi tel. +358 40 332 8153

Telasuo, Christina tel. +358 40 332 1828

E-mail: forename.surname@tulli.fi

Monthly statistics for Februari 2024 is published 29.4.2024.

More specific data on countries and goods, as well as statistics on logistics, are available free of charge via the Uljas statistical database: uljas.tulli.fi.

ISSN 1796-0479 = Official Statistics of Finland (pdf)

ISSN 2670-0565 = Preliminary statistics on the international trade in goods (web publication)

Contact information:

Finnish Customs
Statistics

Opastinsilta 12
PO Box 512
FI-00101 Helsinki

Exchange + 358 295 5200
Statistics service + 358 295 52335
statistics@tulli.fi