

Preliminary statistics on the international trade in goods October 2023

Export prices decreased by 6.4 per cent and export volume by 2.7 per cent in October according to preliminary data

According to the preliminary statistics of international trade in goods provided by Finnish Customs, the value of Finnish exports decreased by 10.4 per cent in October year-on-year. The value of Finnish exports in October was EUR 6.2 billion. Export volume decreased by 2.7 per cent and export prices declined by 6.4 per cent year-on-year.

The value of imports decreased by 21.9 per cent in October and the value of imports was EUR 6.2 billion. Import prices declined by 8.5 per cent and import volume decreased by 13.3 per cent compared to October 2022.

In January-October 2023, the total value of exports decreased by 7.1 per cent and the value of imports by 17.9 per cent year-on-year. Change of export volume during the latest 12 months was -3.8 per cent (12 month moving average November 2022 – October 2023). The corresponding figure for import volume was -10.7 per cent.

The trade balance was in surplus of EUR 15 million in October. In January-October, the aggregated deficit amounted to EUR 1.3 billion. In October 2022, the trade balance was EUR 1.0 billion in deficit and in January-October of the same year, the aggregated deficit was EUR 10.4 billion.



Helsinki 7.12.2023. Free for publication at 9.00 a.m.

Quoting is encouraged provided Finnish Customs is acknowledged as the source.

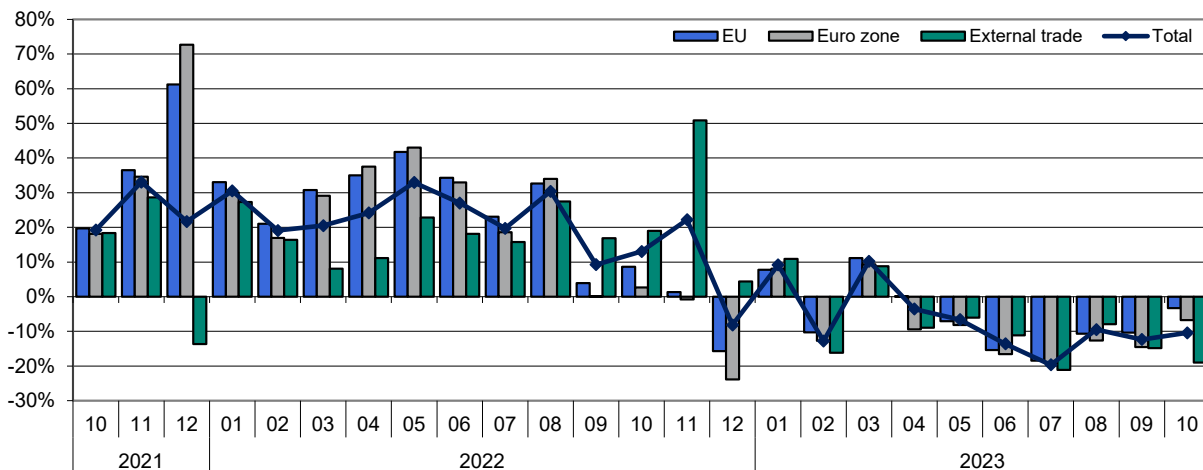
Volume of external exports decreased, export volume to EU countries increased

Value of exports to EU member states decreased by 3.3 per cent and to non-EU countries by 19.0 per cent in October compared to the same month the previous year. The volume of exports to EU countries increased by 6.8 per cent, but decreased to non-EU countries by 13.8 per cent during the same time.

Calculated from the beginning of the year, value of exports to EU countries decreased by 5.7 per cent and to non-EU countries by 8.9 per cent. The volume of exports to EU member states decreased by 4.2 per cent and the volume of exports to non-EU countries by 3.0 per cent calculated according to 12-month moving average.

Figure 2. Change of export values by month compared with the same month of the previous year 2021-2023

Finnish Customs Statistics

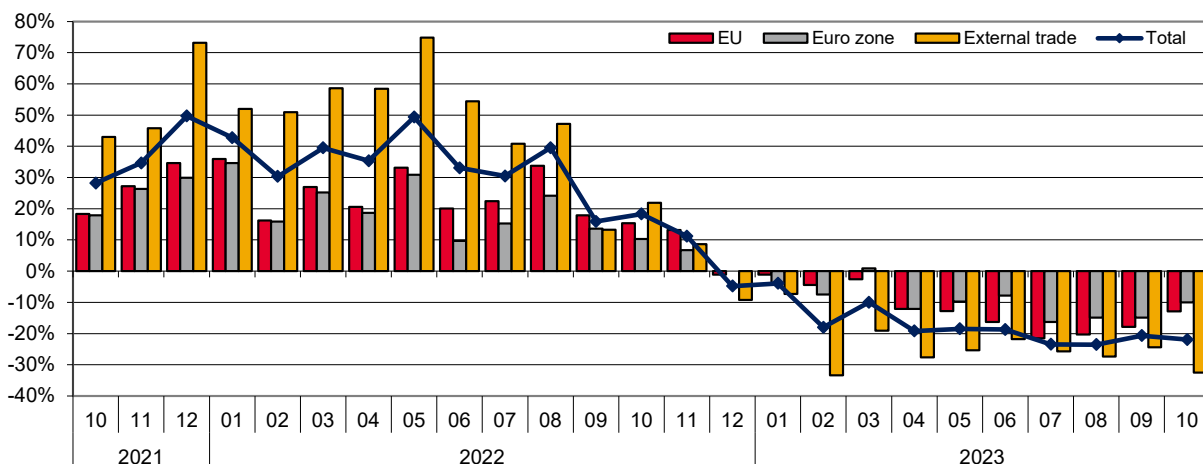


Value of imports from EU countries decreased by 12.9 per cent and from non-EU countries by 32.5 per cent in October. The volume of imports from EU member states decreased by 3.3 per cent and from non-EU countries by 26.9 per cent.

Calculated from the beginning of the year, value of imports from EU member states decreased by 12.4 per cent and from other countries by 24.6 per cent. The volume of imports from EU member states decreased by 5.0 per cent, and the volume of imports from non-EU countries by 17.8 per cent calculated according to 12-month moving average.

Figure 3. Change of import values by month compared with the same month of the previous year 2021-2023

Finnish Customs Statistics



In this publication preliminary statistics under table 6 are listed export and import values and percentage change by country. The values in the table are preliminary and significant changes are possible when data becomes more complete.

Table 1: Exports 2021-2023, million euro

| Month | Total | | | EU total | | | Euro zone | | | External trade | | |
|------------------|---------------|---------------|----------------|---------------|---------------|---------------|---------------|---------------|---------------|----------------|---------------|----------------|
| | 2021 | 2022 | 2023* | 2021 | 2022 | 2023* | 2021 | 2022 | 2023* | 2021 | 2022 | 2023* |
| 1 | 4 423 | 5 772 | 6 300 | 2 483 | 3 303 | 3 560 | 1 707 | 2 220 | 2 400 | 1 940 | 2 470 | 2 740 |
| 2 | 4 825 | 5 745 | 5 010 | 2 759 | 3 340 | 2 995 | 1 954 | 2 285 | 1 995 | 2 066 | 2 405 | 2 015 |
| 3 | 5 817 | 7 010 | 7 725 | 3 182 | 4 161 | 4 625 | 2 235 | 2 885 | 3 155 | 2 636 | 2 849 | 3 100 |
| 4 | 5 350 | 6 641 | 6 405 | 2 914 | 3 934 | 3 940 | 2 016 | 2 772 | 2 510 | 2 436 | 2 708 | 2 465 |
| 5 | 5 305 | 7 053 | 6 585 | 2 832 | 4 015 | 3 730 | 1 953 | 2 793 | 2 565 | 2 473 | 3 038 | 2 855 |
| 6 | 5 700 | 7 239 | 6 255 | 3 114 | 4 183 | 3 540 | 2 163 | 2 876 | 2 400 | 2 587 | 3 056 | 2 715 |
| 7 | 5 547 | 6 640 | 5 335 | 2 985 | 3 673 | 2 995 | 2 149 | 2 549 | 2 060 | 2 562 | 2 967 | 2 340 |
| 8 | 5 160 | 6 729 | 6 090 | 2 902 | 3 850 | 3 440 | 1 964 | 2 632 | 2 300 | 2 259 | 2 879 | 2 650 |
| 9 | 6 621 | 7 232 | 6 340 | 3 898 | 4 050 | 3 630 | 2 770 | 2 773 | 2 370 | 2 723 | 3 182 | 2 710 |
| 10 | 6 124 | 6 922 | 6 200 | 3 491 | 3 791 | 3 665 | 2 440 | 2 505 | 2 335 | 2 632 | 3 131 | 2 535 |
| 11 | 6 623 | 8 093 | | 3 833 | 3 885 | | 2 670 | 2 649 | | 2 790 | 4 208 | |
| 12 | 7 410 | 6 806 | | 4 635 | 3 908 | | 3 609 | 2 747 | | 2 776 | 2 898 | |
| October | 6 124 | 6 922 | 6 200 | 3 491 | 3 791 | 3 665 | 2 440 | 2 505 | 2 335 | 2 632 | 3 131 | 2 535 |
| Change | | 13,0 % | -10,4 % | | 8,6 % | -3,3 % | | 2,7 % | -6,8 % | | 19,0 % | -19,0 % |
| Cum. 1-10 | 54 872 | 66 983 | 62 245 | 30 560 | 38 300 | 36 120 | 21 351 | 26 290 | 24 090 | 24 314 | 28 685 | 26 125 |
| Change | | 22,1 % | -7,1 % | | 25,3 % | -5,7 % | | 23,1 % | -8,4 % | | 18,0 % | -8,9 % |

Table 2: Imports 2021-2023, million euro

| Month | Total | | | EU total | | | Euro zone | | | External trade | | |
|------------------|---------------|---------------|----------------|---------------|---------------|----------------|---------------|---------------|----------------|----------------|---------------|----------------|
| | 2021 | 2022 | 2023* | 2021 | 2022 | 2023* | 2021 | 2022 | 2023* | 2021 | 2022 | 2023* |
| 1 | 4 787 | 6 834 | 6 565 | 2 743 | 3 728 | 3 685 | 1 800 | 2 424 | 2 330 | 2 044 | 3 106 | 2 880 |
| 2 | 5 275 | 6 874 | 5 635 | 3 132 | 3 640 | 3 480 | 2 057 | 2 383 | 2 205 | 2 143 | 3 234 | 2 155 |
| 3 | 6 118 | 8 533 | 7 680 | 3 696 | 4 692 | 4 570 | 2 441 | 3 057 | 3 085 | 2 422 | 3 842 | 3 110 |
| 4 | 5 615 | 7 600 | 6 140 | 3 425 | 4 130 | 3 630 | 2 307 | 2 737 | 2 405 | 2 190 | 3 470 | 2 510 |
| 5 | 5 537 | 8 269 | 6 740 | 3 384 | 4 505 | 3 930 | 2 235 | 2 926 | 2 640 | 2 153 | 3 764 | 2 810 |
| 6 | 5 985 | 7 965 | 6 475 | 3 716 | 4 463 | 3 735 | 2 498 | 2 740 | 2 525 | 2 268 | 3 502 | 2 740 |
| 7 | 5 975 | 7 795 | 5 965 | 3 372 | 4 129 | 3 240 | 2 197 | 2 532 | 2 120 | 2 603 | 3 666 | 2 725 |
| 8 | 5 750 | 8 023 | 6 135 | 3 262 | 4 362 | 3 475 | 2 139 | 2 656 | 2 260 | 2 488 | 3 661 | 2 660 |
| 9 | 6 525 | 7 562 | 6 000 | 3 687 | 4 346 | 3 570 | 2 410 | 2 739 | 2 330 | 2 838 | 3 215 | 2 430 |
| 10 | 6 698 | 7 923 | 6 185 | 3 703 | 4 272 | 3 720 | 2 454 | 2 707 | 2 435 | 2 995 | 3 650 | 2 465 |
| 11 | 7 028 | 7 816 | | 3 982 | 4 506 | | 2 614 | 2 790 | | 3 046 | 3 310 | |
| 12 | 7 641 | 7 275 | | 4 186 | 4 140 | | 2 680 | 2 680 | | 3 455 | 3 135 | |
| October | 6 698 | 7 923 | 6 185 | 3 703 | 4 272 | 3 720 | 2 454 | 2 707 | 2 435 | 2 995 | 3 650 | 2 465 |
| Change | | 18,3 % | -21,9 % | | 15,4 % | -12,9 % | | 10,3 % | -10,0 % | | 21,9 % | -32,5 % |
| Cum. 1-10 | 58 265 | 77 378 | 63 520 | 34 120 | 42 267 | 37 035 | 22 538 | 26 901 | 24 335 | 24 144 | 35 110 | 26 485 |
| Change | | 32,8 % | -17,9 % | | 23,9 % | -12,4 % | | 19,4 % | -9,5 % | | 45,4 % | -24,6 % |

Table 3: Trade balance 2021-2023, million euro

| Month | Total | | | EU total | | | Euro zone | | | External trade | | |
|------------------|---------------|----------------|---------------|---------------|---------------|-------------|---------------|-------------|-------------|----------------|---------------|-------------|
| | 2021 | 2022 | 2023* | 2021 | 2022 | 2023* | 2021 | 2022 | 2023* | 2021 | 2022 | 2023* |
| 1 | -365 | -1 062 | -265 | -260 | -425 | -125 | -93 | -203 | 70 | -105 | -637 | -140 |
| 2 | -450 | -1 130 | -625 | -373 | -301 | -485 | -102 | -98 | -210 | -77 | -829 | -140 |
| 3 | -301 | -1 523 | 45 | -514 | -531 | 55 | -206 | -172 | 70 | 214 | -992 | -10 |
| 4 | -265 | -959 | 265 | -511 | -196 | 310 | -291 | 35 | 105 | 246 | -762 | -45 |
| 5 | -231 | -1 216 | -155 | -552 | -490 | -200 | -283 | -133 | -75 | 320 | -726 | 45 |
| 6 | -284 | -726 | -220 | -602 | -280 | -195 | -335 | 136 | -125 | 318 | -446 | -25 |
| 7 | -428 | -1 155 | -630 | -387 | -456 | -245 | -48 | 18 | -60 | -41 | -699 | -385 |
| 8 | -590 | -1 294 | -45 | -360 | -512 | -35 | -175 | -24 | 40 | -230 | -782 | -10 |
| 9 | 96 | -329 | 340 | 211 | -296 | 60 | 359 | 34 | 40 | -115 | -33 | 280 |
| 10 | -574 | -1 000 | 15 | -211 | -481 | -55 | -14 | -202 | -100 | -363 | -519 | 70 |
| 11 | -405 | 277 | | -149 | -621 | | 56 | -141 | | -256 | 898 | |
| 12 | -231 | -469 | | 448 | -232 | | 929 | 67 | | -679 | -237 | |
| Cum. 1-10 | -3 392 | -10 394 | -1 275 | -3 559 | -3 968 | -915 | -1 188 | -609 | -245 | 167 | -6 425 | -360 |

*preliminary data

Table 4: Seasonally adjusted values (mill. euro) of export and import, as well as the change (%) from previous month

Seasonally adjusted¹ export

| Year | Month | Total | Change | EU total | Change | Euro zone | Change | External trade | Change |
|------|-------|-------|--------|----------|--------|-----------|--------|----------------|--------|
| 2021 | 1 | 4 980 | | 2 749 | | 1 910 | | 2 231 | |
| | 2 | 5 158 | 3,6 | 2 899 | 5,4 | 2 043 | 6,9 | 2 260 | 1,3 |
| | 3 | 5 309 | 2,9 | 2 855 | -1,5 | 1 986 | -2,8 | 2 454 | 8,6 |
| | 4 | 5 183 | -2,4 | 2 818 | -1,3 | 1 945 | -2,1 | 2 365 | -3,6 |
| | 5 | 5 345 | 3,1 | 2 828 | 0,4 | 1 961 | 0,8 | 2 517 | 6,4 |
| | 6 | 5 445 | 1,9 | 3 013 | 6,5 | 2 080 | 6,1 | 2 433 | -3,3 |
| | 7 | 5 851 | 7,5 | 3 284 | 9,0 | 2 301 | 10,6 | 2 567 | 5,5 |
| | 8 | 5 471 | -6,5 | 3 102 | -5,5 | 2 142 | -6,9 | 2 368 | -7,7 |
| | 9 | 6 261 | 14,5 | 3 693 | 19,1 | 2 641 | 23,3 | 2 568 | 8,4 |
| | 10 | 6 046 | -3,4 | 3 407 | -7,7 | 2 421 | -8,3 | 2 639 | 2,8 |
| | 11 | 6 286 | 4,0 | 3 608 | 5,9 | 2 514 | 3,8 | 2 679 | 1,5 |
| | 12 | 6 959 | 10,7 | 4 415 | 22,4 | 3 384 | 34,6 | 2 544 | -5,0 |
| 2022 | 1 | 6 249 | -10,2 | 3 518 | -20,3 | 2 376 | -29,8 | 2 731 | 7,4 |
| | 2 | 6 141 | -1,7 | 3 510 | -0,2 | 2 389 | 0,5 | 2 631 | -3,7 |
| | 3 | 6 352 | 3,4 | 3 699 | 5,4 | 2 563 | 7,3 | 2 653 | 0,8 |
| | 4 | 6 722 | 5,8 | 3 987 | 7,8 | 2 797 | 9,1 | 2 735 | 3,1 |
| | 5 | 6 830 | 1,6 | 3 859 | -3,2 | 2 681 | -4,1 | 2 972 | 8,7 |
| | 6 | 6 923 | 1,4 | 4 048 | 4,9 | 2 765 | 3,1 | 2 875 | -3,2 |
| | 7 | 7 300 | 5,4 | 4 209 | 4,0 | 2 855 | 3,2 | 3 091 | 7,5 |
| | 8 | 6 865 | -5,9 | 3 962 | -5,9 | 2 743 | -3,9 | 2 903 | -6,1 |
| | 9 | 6 835 | -0,4 | 3 836 | -3,2 | 2 644 | -3,6 | 2 999 | 3,3 |
| | 10 | 6 831 | -0,1 | 3 693 | -3,7 | 2 487 | -5,9 | 3 139 | 4,6 |
| | 11 | 7 697 | 12,7 | 3 657 | -1,0 | 2 494 | 0,3 | 4 040 | 28,7 |
| | 12 | 6 915 | -10,2 | 4 044 | 10,6 | 2 818 | 13,0 | 2 871 | -28,9 |
| 2023 | 1 | 6 566 | -5,1 | 3 650 | -9,7 | 2 456 | -12,9 | 2 916 | 1,6 |
| | 2 | 5 350 | -18,5 | 3 147 | -13,8 | 2 085 | -15,1 | 2 203 | -24,4 |
| | 3 | 7 000 | 30,8 | 4 112 | 30,6 | 2 802 | 34,4 | 2 888 | 31,1 |
| | 4 | 6 745 | -3,6 | 4 153 | 1,0 | 2 648 | -5,5 | 2 592 | -10,3 |
| | 5 | 6 381 | -5,4 | 3 587 | -13,6 | 2 463 | -7,0 | 2 794 | 7,8 |
| | 6 | 5 982 | -6,3 | 3 427 | -4,5 | 2 306 | -6,4 | 2 555 | -8,6 |
| | 7 | 5 874 | -1,8 | 3 436 | 0,3 | 2 307 | 0,1 | 2 437 | -4,6 |
| | 8 | 6 207 | 5,7 | 3 536 | 2,9 | 2 399 | 4,0 | 2 671 | 9,6 |
| | 9 | 6 227 | 0,3 | 3 569 | 0,9 | 2 362 | -1,6 | 2 658 | -0,5 |
| | 10 | 5 873 | -5,7 | 3 432 | -3,8 | 2 215 | -6,2 | 2 442 | -8,1 |

Seasonally adjusted¹ import

| Year | Month | Total | Change | EU total | Change | Euro zone | Change | External trade | Change |
|------|-------|-------|--------|----------|--------|-----------|--------|----------------|--------|
| 2021 | 1 | 5 296 | | 3 133 | | 2 107 | | 2 163 | |
| | 2 | 5 565 | 5,1 | 3 267 | 4,3 | 2 128 | 1,0 | 2 297 | 6,2 |
| | 3 | 5 609 | 0,8 | 3 384 | 3,6 | 2 212 | 3,9 | 2 225 | -3,2 |
| | 4 | 5 496 | -2,0 | 3 295 | -2,6 | 2 176 | -1,6 | 2 201 | -1,1 |
| | 5 | 5 558 | 1,1 | 3 327 | 1,0 | 2 185 | 0,4 | 2 231 | 1,3 |
| | 6 | 5 895 | 6,1 | 3 558 | 6,9 | 2 374 | 8,7 | 2 337 | 4,8 |
| | 7 | 6 128 | 4,0 | 3 589 | 0,9 | 2 332 | -1,8 | 2 539 | 8,6 |
| | 8 | 5 969 | -2,6 | 3 480 | -3,0 | 2 315 | -0,7 | 2 489 | -2,0 |
| | 9 | 6 337 | 6,2 | 3 561 | 2,3 | 2 333 | 0,8 | 2 776 | 11,5 |
| | 10 | 6 596 | 4,1 | 3 680 | 3,3 | 2 464 | 5,6 | 2 917 | 5,1 |
| | 11 | 6 838 | 3,7 | 3 841 | 4,4 | 2 526 | 2,5 | 2 997 | 2,8 |
| | 12 | 7 151 | 4,6 | 3 889 | 1,3 | 2 487 | -1,5 | 3 262 | 8,8 |
| 2022 | 1 | 7 322 | 2,4 | 4 125 | 6,1 | 2 743 | 10,3 | 3 197 | -2,0 |
| | 2 | 7 266 | -0,8 | 3 799 | -7,9 | 2 467 | -10,0 | 3 467 | 8,4 |
| | 3 | 7 771 | 7,0 | 4 242 | 11,7 | 2 716 | 10,1 | 3 529 | 1,8 |
| | 4 | 7 740 | -0,4 | 4 154 | -2,1 | 2 722 | 0,2 | 3 586 | 1,6 |
| | 5 | 8 087 | 4,5 | 4 296 | 3,4 | 2 765 | 1,6 | 3 791 | 5,7 |
| | 6 | 7 886 | -2,5 | 4 278 | -0,4 | 2 604 | -5,8 | 3 608 | -4,8 |
| | 7 | 8 208 | 4,1 | 4 533 | 6,0 | 2 779 | 6,7 | 3 675 | 1,9 |
| | 8 | 8 064 | -1,8 | 4 503 | -0,7 | 2 779 | 0,0 | 3 561 | -3,1 |
| | 9 | 7 343 | -8,9 | 4 197 | -6,8 | 2 652 | -4,6 | 3 145 | -11,7 |
| | 10 | 7 796 | 6,2 | 4 241 | 1,1 | 2 718 | 2,5 | 3 555 | 13,0 |
| | 11 | 7 602 | -2,5 | 4 345 | 2,4 | 2 696 | -0,8 | 3 257 | -8,4 |
| | 12 | 7 222 | -5,0 | 4 093 | -5,8 | 2 660 | -1,3 | 3 129 | -3,9 |
| 2023 | 1 | 6 833 | -5,4 | 3 950 | -3,5 | 2 550 | -4,1 | 2 884 | -7,9 |
| | 2 | 5 946 | -13,0 | 3 636 | -7,9 | 2 285 | -10,4 | 2 310 | -19,9 |
| | 3 | 6 987 | 17,5 | 4 128 | 13,5 | 2 739 | 19,9 | 2 859 | 23,8 |
| | 4 | 6 432 | -7,9 | 3 764 | -8,8 | 2 475 | -9,6 | 2 667 | -6,7 |
| | 5 | 6 575 | 2,2 | 3 746 | -0,5 | 2 495 | 0,8 | 2 828 | 6,0 |
| | 6 | 6 399 | -2,7 | 3 575 | -4,6 | 2 399 | -3,9 | 2 824 | -0,2 |
| | 7 | 6 285 | -1,8 | 3 554 | -0,6 | 2 326 | -3,0 | 2 731 | -3,3 |
| | 8 | 6 180 | -1,7 | 3 591 | 1,0 | 2 364 | 1,6 | 2 588 | -5,2 |
| | 9 | 6 000 | -2,9 | 3 557 | -1,0 | 2 331 | -1,4 | 2 443 | -5,6 |
| | 10 | 5 918 | -1,4 | 3 583 | 0,7 | 2 362 | 1,3 | 2 336 | -4,4 |

Table 5: Trend figures (mill. euro) of export and import, as well as the change (%) from previous month

Trend figures of export¹

| Year | Month | Total | Change | EU total | Change | Euro zone | Change | External trade | Change |
|------|-------|-------|--------|----------|--------|-----------|--------|----------------|--------|
| 2021 | 1 | 5 081 | | 2 820 | | 1 990 | | 2 261 | |
| | 2 | 5 165 | 1,7 | 2 853 | 1,2 | 2 002 | 0,6 | 2 312 | 2,3 |
| | 3 | 5 244 | 1,5 | 2 876 | 0,8 | 2 011 | 0,4 | 2 368 | 2,4 |
| | 4 | 5 310 | 1,3 | 2 897 | 0,8 | 2 023 | 0,6 | 2 413 | 1,9 |
| | 5 | 5 395 | 1,6 | 2 948 | 1,8 | 2 056 | 1,7 | 2 447 | 1,4 |
| | 6 | 5 515 | 2,2 | 3 043 | 3,2 | 2 115 | 2,9 | 2 472 | 1,0 |
| | 7 | 5 627 | 2,0 | 3 140 | 3,2 | 2 179 | 3,0 | 2 487 | 0,6 |
| | 8 | 5 725 | 1,7 | 3 221 | 2,6 | 2 233 | 2,5 | 2 504 | 0,7 |
| | 9 | 5 850 | 2,2 | 3 305 | 2,6 | 2 294 | 2,7 | 2 546 | 1,7 |
| | 10 | 5 984 | 2,3 | 3 389 | 2,5 | 2 359 | 2,8 | 2 595 | 1,9 |
| | 11 | 6 078 | 1,6 | 3 458 | 2,0 | 2 407 | 2,0 | 2 620 | 1,0 |
| | 12 | 6 142 | 1,0 | 3 506 | 1,4 | 2 431 | 1,0 | 2 635 | 0,6 |
| 2022 | 1 | 6 216 | 1,2 | 3 558 | 1,5 | 2 453 | 0,9 | 2 658 | 0,9 |
| | 2 | 6 306 | 1,4 | 3 626 | 1,9 | 2 497 | 1,8 | 2 681 | 0,8 |
| | 3 | 6 432 | 2,0 | 3 716 | 2,5 | 2 568 | 2,8 | 2 715 | 1,3 |
| | 4 | 6 597 | 2,6 | 3 814 | 2,6 | 2 637 | 2,7 | 2 783 | 2,5 |
| | 5 | 6 754 | 2,4 | 3 894 | 2,1 | 2 683 | 1,7 | 2 860 | 2,8 |
| | 6 | 6 891 | 2,0 | 3 971 | 2,0 | 2 710 | 1,0 | 2 920 | 2,1 |
| | 7 | 6 955 | 0,9 | 3 997 | 0,7 | 2 717 | 0,3 | 2 958 | 1,3 |
| | 8 | 6 912 | -0,6 | 3 937 | -1,5 | 2 692 | -0,9 | 2 975 | 0,6 |
| | 9 | 6 851 | -0,9 | 3 858 | -2,0 | 2 648 | -1,7 | 2 993 | 0,6 |
| | 10 | 6 806 | -0,6 | 3 806 | -1,3 | 2 610 | -1,4 | 3 000 | 0,2 |
| | 11 | 6 764 | -0,6 | 3 798 | -0,2 | 2 604 | -0,3 | 2 966 | -1,1 |
| | 12 | 6 733 | -0,5 | 3 813 | 0,4 | 2 609 | 0,2 | 2 920 | -1,5 |
| 2023 | 1 | 6 703 | -0,4 | 3 819 | 0,2 | 2 602 | -0,3 | 2 884 | -1,2 |
| | 2 | 6 688 | -0,2 | 3 842 | 0,6 | 2 603 | 0,0 | 2 846 | -1,3 |
| | 3 | 6 636 | -0,8 | 3 846 | 0,1 | 2 600 | -0,1 | 2 790 | -2,0 |
| | 4 | 6 488 | -2,2 | 3 761 | -2,2 | 2 556 | -1,7 | 2 727 | -2,3 |
| | 5 | 6 311 | -2,7 | 3 637 | -3,3 | 2 483 | -2,8 | 2 674 | -2,0 |
| | 6 | 6 167 | -2,3 | 3 551 | -2,4 | 2 418 | -2,6 | 2 616 | -2,2 |
| | 7 | 6 098 | -1,1 | 3 517 | -1,0 | 2 381 | -1,5 | 2 581 | -1,3 |
| | 8 | 6 104 | 0,1 | 3 518 | 0,1 | 2 362 | -0,8 | 2 586 | 0,2 |
| | 9 | 6 105 | 0,0 | 3 529 | 0,3 | 2 341 | -0,9 | 2 575 | -0,4 |
| | 10 | 6 077 | -0,5 | 3 533 | 0,1 | 2 323 | -0,8 | 2 544 | -1,2 |

Trend figures of import¹

| Year | Month | Total | Change | EU total | Change | Euro zone | Change | External trade | Change |
|------|-------|-------|--------|----------|--------|-----------|--------|----------------|--------|
| 2021 | 1 | 5 340 | | 3 199 | | 2 128 | | 2 142 | |
| | 2 | 5 478 | 2,6 | 3 267 | 2,1 | 2 158 | 1,4 | 2 211 | 3,3 |
| | 3 | 5 559 | 1,5 | 3 323 | 1,7 | 2 189 | 1,4 | 2 235 | 1,1 |
| | 4 | 5 614 | 1,0 | 3 365 | 1,2 | 2 218 | 1,3 | 2 249 | 0,6 |
| | 5 | 5 707 | 1,7 | 3 415 | 1,5 | 2 253 | 1,6 | 2 292 | 1,9 |
| | 6 | 5 856 | 2,6 | 3 479 | 1,9 | 2 293 | 1,8 | 2 377 | 3,7 |
| | 7 | 6 013 | 2,7 | 3 531 | 1,5 | 2 327 | 1,5 | 2 482 | 4,4 |
| | 8 | 6 167 | 2,6 | 3 571 | 1,1 | 2 357 | 1,3 | 2 595 | 4,6 |
| | 9 | 6 364 | 3,2 | 3 627 | 1,6 | 2 395 | 1,6 | 2 737 | 5,5 |
| | 10 | 6 593 | 3,6 | 3 706 | 2,2 | 2 443 | 2,0 | 2 887 | 5,5 |
| | 11 | 6 827 | 3,5 | 3 798 | 2,5 | 2 491 | 1,9 | 3 029 | 4,9 |
| | 12 | 7 048 | 3,2 | 3 886 | 2,3 | 2 536 | 1,8 | 3 161 | 4,4 |
| 2022 | 1 | 7 233 | 2,6 | 3 954 | 1,7 | 2 575 | 1,6 | 3 279 | 3,7 |
| | 2 | 7 414 | 2,5 | 4 015 | 1,6 | 2 606 | 1,2 | 3 399 | 3,7 |
| | 3 | 7 598 | 2,5 | 4 092 | 1,9 | 2 640 | 1,3 | 3 506 | 3,1 |
| | 4 | 7 756 | 2,1 | 4 167 | 1,8 | 2 671 | 1,2 | 3 590 | 2,4 |
| | 5 | 7 875 | 1,5 | 4 236 | 1,7 | 2 686 | 0,5 | 3 640 | 1,4 |
| | 6 | 7 938 | 0,8 | 4 306 | 1,7 | 2 693 | 0,3 | 3 632 | -0,2 |
| | 7 | 7 933 | -0,1 | 4 351 | 1,0 | 2 701 | 0,3 | 3 582 | -1,4 |
| | 8 | 7 821 | -1,4 | 4 337 | -0,3 | 2 700 | -0,0 | 3 483 | -2,8 |
| | 9 | 7 669 | -1,9 | 4 281 | -1,3 | 2 687 | -0,5 | 3 388 | -2,7 |
| | 10 | 7 566 | -1,3 | 4 230 | -1,2 | 2 669 | -0,6 | 3 337 | -1,5 |
| | 11 | 7 418 | -2,0 | 4 171 | -1,4 | 2 645 | -0,9 | 3 247 | -2,7 |
| | 12 | 7 188 | -3,1 | 4 080 | -2,2 | 2 607 | -1,4 | 3 108 | -4,3 |
| 2023 | 1 | 6 963 | -3,1 | 3 979 | -2,5 | 2 561 | -1,8 | 2 984 | -4,0 |
| | 2 | 6 810 | -2,2 | 3 908 | -1,8 | 2 529 | -1,2 | 2 901 | -2,8 |
| | 3 | 6 698 | -1,6 | 3 861 | -1,2 | 2 518 | -0,5 | 2 837 | -2,2 |
| | 4 | 6 589 | -1,6 | 3 799 | -1,6 | 2 496 | -0,8 | 2 789 | -1,7 |
| | 5 | 6 503 | -1,3 | 3 725 | -2,0 | 2 462 | -1,4 | 2 778 | -0,4 |
| | 6 | 6 420 | -1,3 | 3 663 | -1,6 | 2 428 | -1,4 | 2 756 | -0,8 |
| | 7 | 6 313 | -1,7 | 3 627 | -1,0 | 2 399 | -1,2 | 2 686 | -2,5 |
| | 8 | 6 197 | -1,9 | 3 611 | -0,4 | 2 383 | -0,7 | 2 585 | -3,8 |
| | 9 | 6 091 | -1,7 | 3 605 | -0,2 | 2 377 | -0,3 | 2 486 | -3,8 |
| | 10 | 6 033 | -1,0 | 3 608 | 0,1 | 2 378 | 0,1 | 2 426 | -2,4 |

Figure 4. Exports 2021-2023 (original, seasonally adjusted and trend)

Finnish Customs Statistics

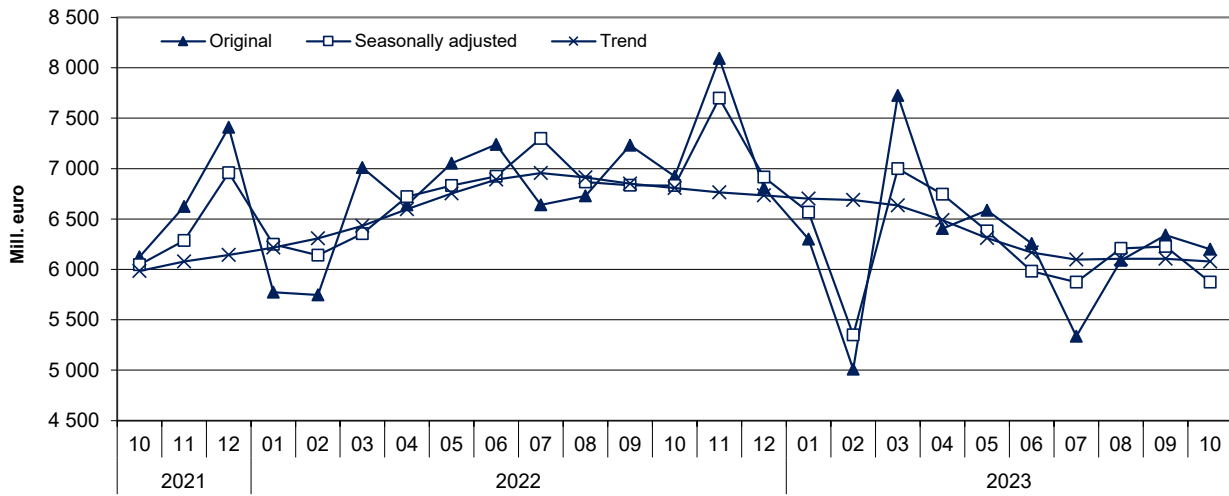
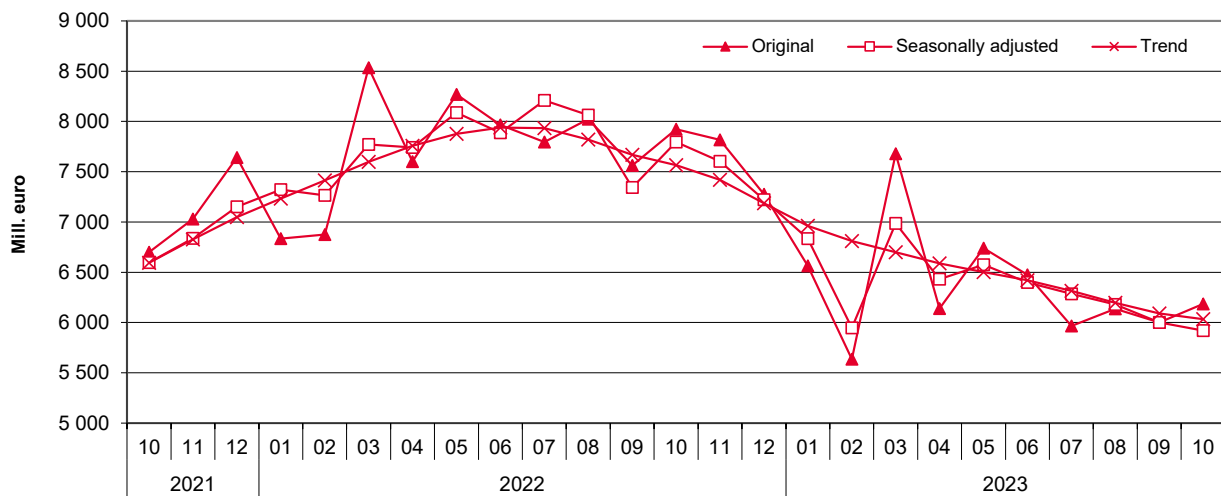


Figure 5. Imports 2021-2023 (original, seasonally adjusted and trend)

Finnish Customs Statistics



¹ Seasonal adjustment is a statistical technique to remove the effects of seasonal calendar influences operating on time series. In trend series, also irregular fluctuations have been filtered off. The TRAMO/SEATS method recommended by Eurostat has been implemented in the seasonal adjustment of the international trade series. Starting July 2019, the JDemetra+2.2.2 program version has been implemented in calculating seasonal adjustments. Data starting year 2010 is used in calculation.

Table 6. Exports and imports by country (main trading partners), preliminary value and change year-on-year *

| Origin/ destination | Exports 2023 | | Imports 2023 | |
|--------------------------------|---------------------------|--------------|---------------------------|--------------|
| | October | | October | |
| | preliminary value MEUR | change % | preliminary value MEUR | change % |
| Total exports / imports | 6 200 | -10,4 | 6 185 | -21,9 |
| DE Germany | 656,4 | -14,0 | 917,4 | -4,5 |
| SE Sweden | 748,6 | -4,5 | 735,1 | -23,8 |
| US United States of America | 614,4 | -12,9 | 303,7 | -36,4 |
| NL Netherlands | 502,8 | 21,6 | 357,0 | -11,9 |
| CN China | 264,9 | -29,0 | 516,5 | -30,5 |
| NO Norway | 214,0 | -1,1 | 495,8 | -4,3 |
| PL Poland | 340,2 | 35,0 | 218,3 | -20,2 |
| EE Estonia | 235,7 | -5,0 | 203,0 | -36,8 |
| FR France | 204,5 | -4,6 | 178,2 | -6,6 |
| IT Italy | 172,1 | -20,2 | 199,4 | -8,2 |
| BE Belgium | 177,7 | -23,4 | 175,1 | 10,3 |
| GB United Kingdom | 233,2 | 1,8 | 104,0 | -43,5 |
| DK Denmark | 107,9 | -14,6 | 130,9 | -13,0 |
| ES Spain | 94,7 | -0,1 | 99,7 | -9,3 |
| CH Switzerland | 131,6 | -16,5 | 58,0 | -21,3 |
| TR Türkiye | 111,4 | -4,8 | 75,2 | -14,3 |
| JP Japan | 111,5 | -18,6 | 62,8 | -34,0 |
| CZ Czechia | 52,9 | 10,0 | 120,5 | 37,8 |
| RU Russia | 21,8 | -69,2 | 134,1 | -53,2 |
| AU Australia | 49,0 | -23,5 | 80,6 | -18,9 |
| LT Lithuania | 79,2 | -15,1 | 49,9 | -13,4 |
| KR South Korea | 55,4 | -18,2 | 69,7 | -2,4 |
| BR Brazil | 46,7 | -32,4 | 73,2 | -24,2 |
| AT Austria | 49,8 | -11,6 | 65,3 | -24,6 |
| CA Canada | 75,1 | -41,8 | 31,8 | -36,1 |

* The values in the table are preliminary and significant changes are possible when data becomes more complete

Preliminary statistics on the international trade in goods, October 2023
2023:E10EN, 7.12.2023

Inquiries:

Kaarna, Anssi tel. +358 40 332 8153

Telasuo, Christina tel. +358 40 332 1828

E-mail: forename.surname@tulli.fi

Monthly statistics for October 2023 is published 29.12.2023.

More specific data on countries and goods, as well as statistics on logistics, are available free of charge via the Uljas statistical database: uljas.tulli.fi.

ISSN 1796-0479 = Official Statistics of Finland (pdf)

ISSN 2670-0565 = Preliminary statistics on the international trade in goods (web publication)

Contact information:

Finnish Customs
Statistics

Opastinsilta 12
PO Box 512
FI-00101 Helsinki

Exchange + 358 295 5200
Statistics service + 358 295 52335
statistics@tulli.fi