

# Preliminary statistics on the international trade in goods December 2021

## Exports increased by 18.2 per cent in December

According to the preliminary statistics of international trade in goods provided by Finnish Customs, the value of Finnish exports increased by 18.2 per cent, and the value of imports by 47.8 per cent in December year-on-year. The value of Finnish exports in December was EUR 7.2 billion and the value of imports EUR 7.5 billion. During the reference month in 2020 exports increased by 7.7 per cent, but imports decreased by 3.5 per cent.

In January-December 2021, the total value of exports increased by 19.4 per cent and the value of imports by 21.5 per cent year-on-year.

The trade balance was in deficit of EUR 345 million in December. In January-December, the deficit amounted to EUR 4.1 billion. In December 2020, the trade balance was EUR 986 million in surplus, but in January-December of the same year it was EUR 2.3 billion in deficit.

Exports to EU member states increased by 55.1 per cent, but exports to non-EU countries decreased by 14.8 per cent in December. Imports from EU countries increased by 32.4 per cent and imports from non-EU countries by 71.9 per cent. Calculated from the beginning of the year, exports to EU countries rose by 23.6 per cent and to non-EU countries by 14.4 per cent. During the same period, imports from EU member states rose by 18.4 per cent and from other countries by 26.1 per cent.

---

Helsinki 7.2.2022. Free for publication at 9.00 a.m.

Quoting is encouraged provided Finnish Customs is acknowledged as the source.

**Table 1: Exports 2019-2021, million euro**

| Month            | Total         |                |               | EU total      |                |               | Euro zone     |                |               | External trade |                |                |
|------------------|---------------|----------------|---------------|---------------|----------------|---------------|---------------|----------------|---------------|----------------|----------------|----------------|
|                  | 2019          | 2020           | 2021*         | 2019          | 2020           | 2021*         | 2019          | 2020           | 2021*         | 2019           | 2020           | 2021*          |
| 1                | 5 838         | 4 907          | 4 425         | 3 433         | 2 741          | 2 485         | 2 532         | 1 862          | 1 705         | 2 406          | 2 166          | 1 940          |
| 2                | 5 144         | 4 454          | 4 825         | 2 839         | 2 507          | 2 760         | 2 019         | 1 781          | 1 955         | 2 305          | 1 948          | 2 065          |
| 3                | 5 493         | 5 071          | 5 815         | 3 026         | 2 887          | 3 180         | 2 114         | 2 013          | 2 235         | 2 467          | 2 184          | 2 635          |
| 4                | 5 505         | 4 449          | 5 350         | 2 960         | 2 350          | 2 915         | 2 040         | 1 597          | 2 015         | 2 545          | 2 100          | 2 435          |
| 5                | 5 818         | 4 048          | 5 305         | 3 270         | 2 252          | 2 830         | 2 251         | 1 492          | 1 950         | 2 548          | 1 796          | 2 475          |
| 6                | 5 265         | 4 523          | 5 705         | 2 803         | 2 450          | 3 115         | 1 924         | 1 671          | 2 160         | 2 463          | 2 072          | 2 590          |
| 7                | 5 073         | 4 444          | 5 540         | 2 634         | 2 423          | 2 980         | 1 891         | 1 739          | 2 140         | 2 439          | 2 021          | 2 560          |
| 8                | 5 075         | 4 406          | 5 155         | 2 765         | 2 393          | 2 900         | 1 868         | 1 613          | 1 965         | 2 310          | 2 012          | 2 255          |
| 9                | 5 306         | 4 932          | 6 625         | 2 859         | 2 776          | 3 895         | 1 959         | 1 927          | 2 770         | 2 446          | 2 156          | 2 730          |
| 10               | 5 757         | 5 138          | 6 095         | 3 114         | 2 916          | 3 475         | 2 160         | 2 063          | 2 420         | 2 643          | 2 223          | 2 620          |
| 11               | 5 125         | 4 978          | 6 545         | 2 791         | 2 809          | 3 785         | 1 901         | 1 981          | 2 635         | 2 334          | 2 169          | 2 760          |
| 12               | 5 654         | 6 090          | 7 200         | 3 425         | 2 875          | 4 460         | 2 600         | 2 088          | 3 460         | 2 229          | 3 215          | 2 740          |
| <b>December</b>  | <b>5 654</b>  | <b>6 090</b>   | <b>7 200</b>  | <b>3 425</b>  | <b>2 875</b>   | <b>4 460</b>  | <b>2 600</b>  | <b>2 088</b>   | <b>3 460</b>  | <b>2 229</b>   | <b>3 215</b>   | <b>2 740</b>   |
| <b>Change</b>    |               | <b>7,7 %</b>   | <b>18,2 %</b> |               | <b>-16,1 %</b> | <b>55,1 %</b> |               | <b>-19,7 %</b> | <b>65,7 %</b> |                | <b>44,2 %</b>  | <b>-14,8 %</b> |
| <b>Cum. 1-12</b> | <b>65 053</b> | <b>57 440</b>  | <b>68 585</b> | <b>35 919</b> | <b>31 379</b>  | <b>38 780</b> | <b>25 259</b> | <b>21 827</b>  | <b>27 410</b> | <b>29 135</b>  | <b>26 062</b>  | <b>29 805</b>  |
| <b>Change</b>    |               | <b>-11,7 %</b> | <b>19,4 %</b> |               | <b>-12,6 %</b> | <b>23,6 %</b> |               | <b>-13,6 %</b> | <b>25,6 %</b> |                | <b>-10,5 %</b> | <b>14,4 %</b>  |

**Table 2: Imports 2019-2021, million euro**

| Month            | Total         |               |               | EU total      |               |               | Euro zone     |               |               | External trade |                |               |
|------------------|---------------|---------------|---------------|---------------|---------------|---------------|---------------|---------------|---------------|----------------|----------------|---------------|
|                  | 2019          | 2020          | 2021*         | 2019          | 2020          | 2021*         | 2019          | 2020          | 2021*         | 2019           | 2020           | 2021*         |
| 1                | 5 325         | 5 223         | 4 780         | 2 983         | 2 922         | 2 740         | 1 915         | 1 934         | 1 790         | 2 342          | 2 300          | 2 040         |
| 2                | 5 265         | 5 233         | 5 270         | 3 151         | 3 195         | 3 135         | 2 119         | 2 161         | 2 055         | 2 114          | 2 038          | 2 135         |
| 3                | 5 619         | 5 410         | 6 105         | 3 281         | 3 340         | 3 695         | 2 211         | 2 290         | 2 435         | 2 337          | 2 070          | 2 410         |
| 4                | 5 840         | 4 260         | 5 605         | 3 445         | 2 513         | 3 420         | 2 343         | 1 698         | 2 300         | 2 395          | 1 747          | 2 185         |
| 5                | 5 839         | 4 372         | 5 520         | 3 468         | 2 595         | 3 375         | 2 364         | 1 734         | 2 225         | 2 371          | 1 777          | 2 145         |
| 6                | 5 185         | 4 777         | 5 970         | 3 053         | 2 891         | 3 705         | 2 047         | 1 895         | 2 485         | 2 133          | 1 886          | 2 265         |
| 7                | 5 571         | 4 910         | 5 965         | 3 091         | 2 768         | 3 365         | 2 046         | 1 846         | 2 185         | 2 480          | 2 143          | 2 600         |
| 8                | 5 339         | 4 660         | 5 745         | 2 999         | 2 712         | 3 255         | 1 931         | 1 785         | 2 130         | 2 340          | 1 948          | 2 490         |
| 9                | 5 548         | 5 377         | 6 505         | 3 290         | 3 260         | 3 680         | 2 192         | 2 207         | 2 400         | 2 258          | 2 117          | 2 825         |
| 10               | 5 792         | 5 224         | 6 665         | 3 370         | 3 130         | 3 685         | 2 248         | 2 078         | 2 435         | 2 422          | 2 094          | 2 980         |
| 11               | 5 239         | 5 219         | 6 970         | 3 065         | 3 130         | 3 945         | 1 997         | 2 068         | 2 585         | 2 174          | 2 089          | 3 025         |
| 12               | 5 287         | 5 104         | 7 545         | 2 993         | 3 109         | 4 115         | 2 010         | 2 060         | 2 625         | 2 294          | 1 995          | 3 430         |
| <b>December</b>  | <b>5 287</b>  | <b>5 104</b>  | <b>7 545</b>  | <b>2 993</b>  | <b>3 109</b>  | <b>4 115</b>  | <b>2 010</b>  | <b>2 060</b>  | <b>2 625</b>  | <b>2 294</b>   | <b>1 995</b>   | <b>3 430</b>  |
| <b>Change</b>    |               | <b>-3,5 %</b> | <b>47,8 %</b> |               | <b>3,9 %</b>  | <b>32,4 %</b> |               | <b>2,5 %</b>  | <b>27,4 %</b> |                | <b>-13,0 %</b> | <b>71,9 %</b> |
| <b>Cum. 1-12</b> | <b>65 849</b> | <b>59 769</b> | <b>72 645</b> | <b>38 189</b> | <b>35 565</b> | <b>42 115</b> | <b>25 423</b> | <b>23 756</b> | <b>27 650</b> | <b>27 660</b>  | <b>24 204</b>  | <b>30 530</b> |
| <b>Change</b>    |               | <b>-9,2 %</b> | <b>21,5 %</b> |               | <b>-6,9 %</b> | <b>18,4 %</b> |               | <b>-6,6 %</b> | <b>16,4 %</b> |                | <b>-12,5 %</b> | <b>26,1 %</b> |

**Table 3: Trade balance 2019-2021, million euro**

| Month            | Total       |               |               | EU total      |               |               | Euro zone   |               |             | External trade |              |             |
|------------------|-------------|---------------|---------------|---------------|---------------|---------------|-------------|---------------|-------------|----------------|--------------|-------------|
|                  | 2019        | 2020          | 2021*         | 2019          | 2020          | 2021*         | 2019        | 2020          | 2021*       | 2019           | 2020         | 2021*       |
| 1                | 513         | -316          | -355          | 449           | -182          | -255          | 617         | -72           | -85         | 64             | -134         | -100        |
| 2                | -121        | -779          | -445          | -313          | -689          | -375          | -99         | -379          | -100        | 191            | -90          | -70         |
| 3                | -125        | -340          | -290          | -255          | -453          | -515          | -97         | -277          | -200        | 130            | 113          | 225         |
| 4                | -335        | 189           | -255          | -486          | -164          | -505          | -302        | -101          | -285        | 151            | 353          | 250         |
| 5                | -21         | -323          | -215          | -198          | -343          | -545          | -114        | -242          | -275        | 177            | 19           | 330         |
| 6                | 80          | -254          | -265          | -250          | -441          | -590          | -123        | -224          | -325        | 330            | 187          | 325         |
| 7                | -498        | -467          | -425          | -457          | -344          | -385          | -154        | -107          | -45         | -41            | -122         | -40         |
| 8                | -264        | -254          | -590          | -234          | -318          | -355          | -63         | -172          | -165        | -30            | 65           | -235        |
| 9                | -243        | -445          | 120           | -431          | -484          | 215           | -233        | -279          | 370         | 188            | 39           | -95         |
| 10               | -36         | -85           | -570          | -256          | -214          | -210          | -88         | -15           | -15         | 221            | 129          | -360        |
| 11               | -114        | -241          | -425          | -274          | -320          | -160          | -97         | -86           | 50          | 160            | 79           | -265        |
| 12               | 367         | 986           | -345          | 432           | -234          | 345           | 590         | 28            | 835         | -65            | 1 220        | -690        |
| <b>Cum. 1-12</b> | <b>-797</b> | <b>-2 329</b> | <b>-4 060</b> | <b>-2 273</b> | <b>-4 186</b> | <b>-3 335</b> | <b>-163</b> | <b>-1 926</b> | <b>-240</b> | <b>1 476</b>   | <b>1 858</b> | <b>-725</b> |

\*preliminary data

Figure 1. Monthly export, import and trade balance 2019-2021

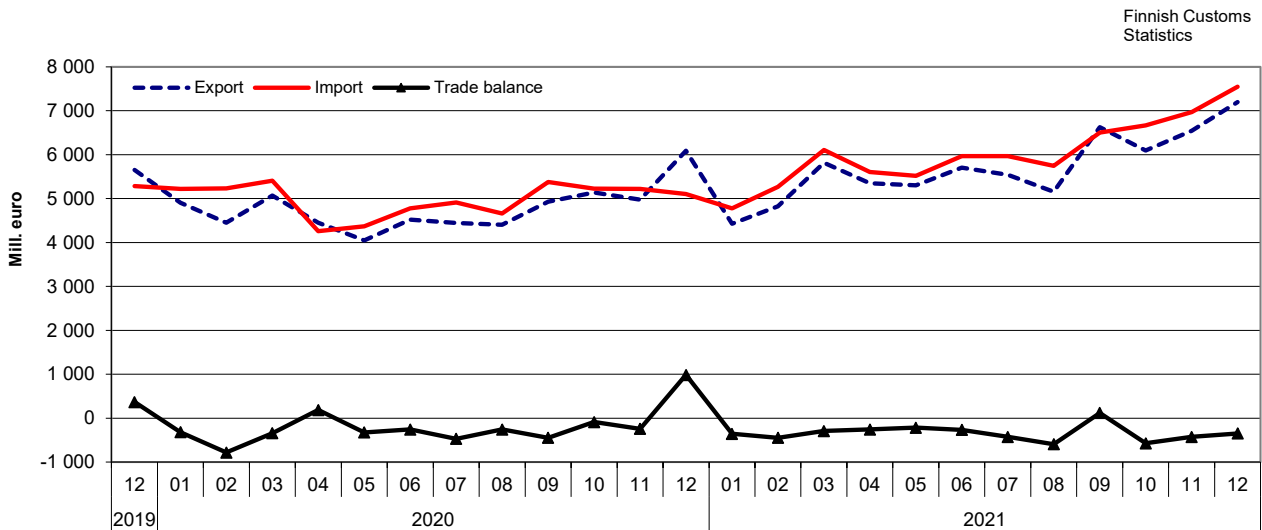


Figure 2. Changes of export values by month compared with the same month of the previous year 2019-2021

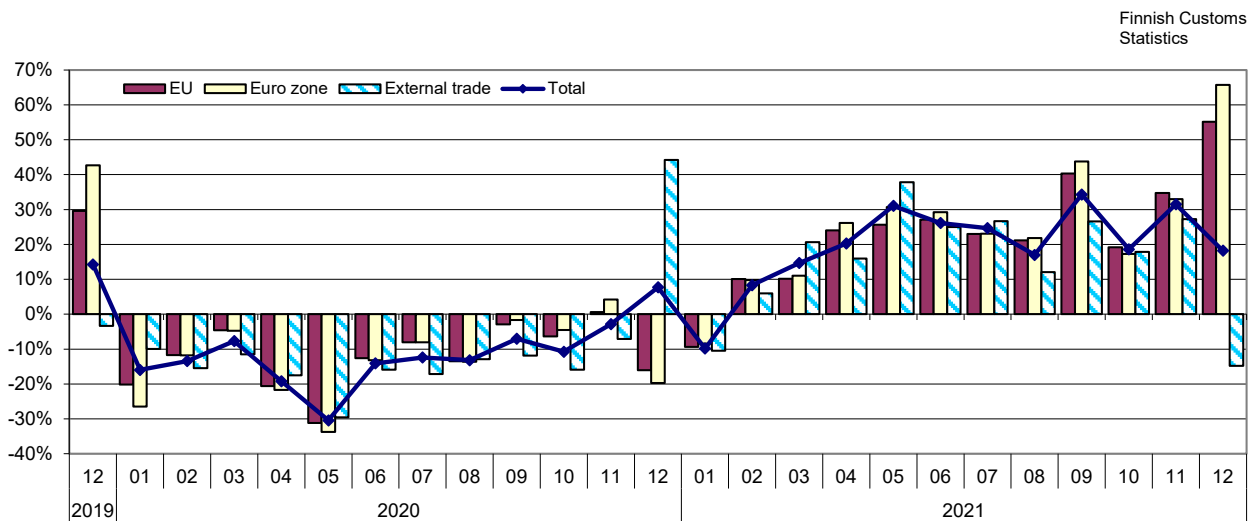
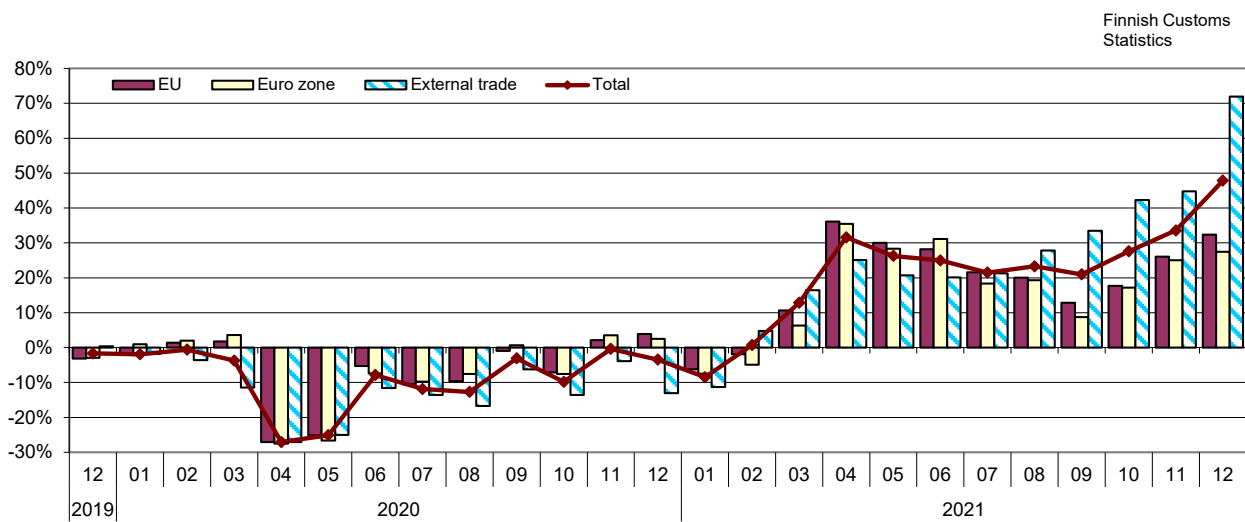


Figure 3. Changes of import values by month compared with the same month of the previous year 2019-2021



**Table 4: Seasonally adjusted values (mill. euro) of export and import, as well as the change (%) from previous month****Seasonally adjusted<sup>12</sup> export**

| Year | Month | Total | Change | EU total | Change | Euro zone | Change | External trade | Change |
|------|-------|-------|--------|----------|--------|-----------|--------|----------------|--------|
| 2019 | 1     | 5 828 |        | 3 355    |        | 2 443     |        | 2 473          |        |
|      | 2     | 5 494 | -5,7   | 2 979    | -11,2  | 2 101     | -14,0  | 2 515          | 1,7    |
|      | 3     | 5 434 | -1,1   | 2 948    | -1,0   | 2 079     | -1,0   | 2 486          | -1,1   |
|      | 4     | 5 359 | -1,4   | 2 908    | -1,3   | 1 996     | -4,0   | 2 451          | -1,4   |
|      | 5     | 5 648 | 5,4    | 3 132    | 7,7    | 2 166     | 8,5    | 2 516          | 2,6    |
|      | 6     | 5 427 | -3,9   | 2 939    | -6,2   | 2 031     | -6,2   | 2 488          | -1,1   |
|      | 7     | 5 145 | -5,2   | 2 800    | -4,7   | 1 942     | -4,3   | 2 345          | -5,7   |
|      | 8     | 5 385 | 4,7    | 2 960    | 5,7    | 2 046     | 5,3    | 2 425          | 3,4    |
|      | 9     | 5 199 | -3,4   | 2 791    | -5,7   | 1 931     | -5,6   | 2 408          | -0,7   |
|      | 10    | 5 239 | 0,8    | 2 781    | -0,3   | 1 937     | 0,3    | 2 458          | 2,0    |
|      | 11    | 5 050 | -3,6   | 2 718    | -2,3   | 1 864     | -3,8   | 2 331          | -5,1   |
|      | 12    | 5 994 | 18,7   | 3 707    | 36,4   | 2 812     | 50,8   | 2 287          | -1,9   |
| 2020 | 1     | 5 111 | -14,7  | 2 797    | -24,6  | 1 882     | -33,1  | 2 314          | 1,2    |
|      | 2     | 4 893 | -4,3   | 2 708    | -3,2   | 1 916     | 1,8    | 2 184          | -5,6   |
|      | 3     | 4 817 | -1,6   | 2 700    | -0,3   | 1 889     | -1,4   | 2 117          | -3,1   |
|      | 4     | 4 331 | -10,1  | 2 309    | -14,5  | 1 562     | -17,3  | 2 021          | -4,5   |
|      | 5     | 4 253 | -1,8   | 2 338    | 1,3    | 1 576     | 0,9    | 1 915          | -5,3   |
|      | 6     | 4 308 | 1,3    | 2 370    | 1,3    | 1 607     | 1,9    | 1 938          | 1,2    |
|      | 7     | 4 518 | 4,9    | 2 576    | 8,7    | 1 786     | 11,1   | 1 943          | 0,2    |
|      | 8     | 4 864 | 7,6    | 2 668    | 3,6    | 1 851     | 3,6    | 2 196          | 13,0   |
|      | 9     | 4 643 | -4,5   | 2 602    | -2,5   | 1 813     | -2,0   | 2 042          | -7,0   |
|      | 10    | 4 862 | 4,7    | 2 714    | 4,3    | 1 939     | 6,9    | 2 148          | 5,2    |
|      | 11    | 4 903 | 0,9    | 2 737    | 0,8    | 1 943     | 0,2    | 2 166          | 0,9    |
|      | 12    | 5 689 | 16,0   | 2 750    | 0,5    | 1 963     | 1,0    | 2 940          | 35,7   |
| 2021 | 1     | 4 987 | -12,3  | 2 748    | -0,1   | 1 893     | -3,6   | 2 239          | -23,8  |
|      | 2     | 5 150 | 3,3    | 2 896    | 5,4    | 2 031     | 7,3    | 2 254          | 0,7    |
|      | 3     | 5 338 | 3,6    | 2 879    | -0,6   | 2 000     | -1,5   | 2 458          | 9,1    |
|      | 4     | 5 186 | -2,8   | 2 843    | -1,3   | 1 972     | -1,4   | 2 344          | -4,7   |
|      | 5     | 5 364 | 3,4    | 2 825    | -0,6   | 1 967     | -0,3   | 2 539          | 8,3    |
|      | 6     | 5 432 | 1,3    | 3 011    | 6,6    | 2 079     | 5,7    | 2 421          | -4,7   |
|      | 7     | 5 857 | 7,8    | 3 297    | 9,5    | 2 303     | 10,8   | 2 560          | 5,8    |
|      | 8     | 5 474 | -6,5   | 3 106    | -5,8   | 2 150     | -6,6   | 2 368          | -7,5   |
|      | 9     | 6 237 | 13,9   | 3 652    | 17,6   | 2 604     | 21,1   | 2 585          | 9,2    |
|      | 10    | 5 999 | -3,8   | 3 369    | -7,8   | 2 381     | -8,5   | 2 630          | 1,7    |
|      | 11    | 6 194 | 3,2    | 3 540    | 5,1    | 2 468     | 3,6    | 2 653          | 0,9    |
|      | 12    | 6 754 | 9,0    | 4 250    | 20,0   | 3 254     | 31,8   | 2 503          | -5,6   |

**Seasonally adjusted<sup>12</sup> import**

| Year | Month | Total | Change | EU total | Change | Euro zone | Change | External trade | Change |
|------|-------|-------|--------|----------|--------|-----------|--------|----------------|--------|
| 2019 | 1     | 5 367 |        | 3 111    |        | 2 040     |        | 2 256          |        |
|      | 2     | 5 515 | 2,8    | 3 246    | 4,4    | 2 162     | 6,0    | 2 268          | 0,6    |
|      | 3     | 5 495 | -0,4   | 3 217    | -0,9   | 2 156     | -0,3   | 2 278          | 0,4    |
|      | 4     | 5 725 | 4,2    | 3 322    | 3,3    | 2 225     | 3,2    | 2 403          | 5,5    |
|      | 5     | 5 727 | 0,0    | 3 311    | -0,3   | 2 244     | 0,9    | 2 416          | 0,5    |
|      | 6     | 5 447 | -4,9   | 3 101    | -6,3   | 2 071     | -7,7   | 2 346          | -2,9   |
|      | 7     | 5 571 | 2,3    | 3 198    | 3,1    | 2 098     | 1,3    | 2 374          | 1,2    |
|      | 8     | 5 556 | -0,3   | 3 208    | 0,3    | 2 094     | -0,2   | 2 348          | -1,1   |
|      | 9     | 5 513 | -0,8   | 3 267    | 1,8    | 2 184     | 4,3    | 2 246          | -4,3   |
|      | 10    | 5 368 | -2,6   | 3 142    | -3,8   | 2 109     | -3,4   | 2 225          | -0,9   |
|      | 11    | 5 245 | -2,3   | 3 056    | -2,7   | 1 995     | -5,4   | 2 189          | -1,6   |
|      | 12    | 5 387 | 2,7    | 3 047    | -0,3   | 2 062     | 3,4    | 2 340          | 6,9    |
| 2020 | 1     | 5 427 | 0,7    | 3 147    | 3,3    | 2 130     | 3,3    | 2 280          | -2,6   |
|      | 2     | 5 596 | 3,1    | 3 365    | 6,9    | 2 257     | 6,0    | 2 231          | -2,1   |
|      | 3     | 5 135 | -8,2   | 3 173    | -5,7   | 2 159     | -4,3   | 1 962          | -12,1  |
|      | 4     | 4 177 | -18,7  | 2 424    | -23,6  | 1 612     | -25,3  | 1 753          | -10,6  |
|      | 5     | 4 553 | 9,0    | 2 637    | 8,8    | 1 760     | 9,2    | 1 916          | 9,3    |
|      | 6     | 4 721 | 3,7    | 2 762    | 4,7    | 1 793     | 1,9    | 1 959          | 2,2    |
|      | 7     | 4 913 | 4,1    | 2 863    | 3,7    | 1 893     | 5,6    | 2 051          | 4,7    |
|      | 8     | 5 004 | 1,9    | 2 994    | 4,6    | 2 001     | 5,7    | 2 011          | -1,9   |
|      | 9     | 5 184 | 3,6    | 3 138    | 4,8    | 2 126     | 6,3    | 2 047          | 1,8    |
|      | 10    | 4 989 | -3,8   | 3 010    | -4,1   | 2 016     | -5,2   | 1 979          | -3,3   |
|      | 11    | 5 224 | 4,7    | 3 121    | 3,7    | 2 065     | 2,4    | 2 104          | 6,3    |
|      | 12    | 4 752 | -9,0   | 2 884    | -7,6   | 1 913     | -7,4   | 1 869          | -11,2  |
| 2021 | 1     | 5 275 | 11,0   | 3 136    | 8,8    | 2 110     | 10,3   | 2 139          | 14,5   |
|      | 2     | 5 520 | 4,6    | 3 230    | 3,0    | 2 098     | -0,6   | 2 289          | 7,0    |
|      | 3     | 5 625 | 1,9    | 3 404    | 5,4    | 2 219     | 5,8    | 2 221          | -3,0   |
|      | 4     | 5 491 | -2,4   | 3 298    | -3,1   | 2 183     | -1,6   | 2 193          | -1,3   |
|      | 5     | 5 574 | 1,5    | 3 325    | 0,8    | 2 183     | 0,0    | 2 249          | 2,6    |
|      | 6     | 5 891 | 5,7    | 3 538    | 6,4    | 2 353     | 7,8    | 2 353          | 4,6    |
|      | 7     | 6 147 | 4,3    | 3 589    | 1,4    | 2 318     | -1,5   | 2 558          | 8,7    |
|      | 8     | 5 985 | -2,6   | 3 484    | -2,9   | 2 311     | -0,3   | 2 501          | -2,2   |
|      | 9     | 6 271 | 4,8    | 3 540    | 1,6    | 2 313     | 0,1    | 2 731          | 9,2    |
|      | 10    | 6 552 | 4,5    | 3 655    | 3,2    | 2 443     | 5,6    | 2 898          | 6,1    |
|      | 11    | 6 775 | 3,4    | 3 815    | 4,4    | 2 497     | 2,2    | 2 960          | 2,1    |
|      | 12    | 7 028 | 3,7    | 3 815    | 0,0    | 2 436     | -2,4   | 3 213          | 8,5    |

**Table 5: Trend figures (mill. euro) of export and import, as well as the change (%) from previous month**

**Trend figures of export<sup>2</sup>**

| Year | Month | Total | Change | EU total | Change | Euro zone | Change | External trade | Change |
|------|-------|-------|--------|----------|--------|-----------|--------|----------------|--------|
| 2019 | 1     | 5 439 |        | 2 959    |        | 2 057     |        | 2 480          |        |
|      | 2     | 5 446 | 0,1    | 2 962    | 0,1    | 2 066     | 0,4    | 2 485          | 0,2    |
|      | 3     | 5 445 | -0,0   | 2 964    | 0,1    | 2 068     | 0,1    | 2 481          | -0,1   |
|      | 4     | 5 450 | 0,1    | 2 974    | 0,4    | 2 067     | -0,0   | 2 476          | -0,2   |
|      | 5     | 5 446 | -0,1   | 2 976    | 0,1    | 2 062     | -0,3   | 2 469          | -0,3   |
|      | 6     | 5 391 | -1,0   | 2 942    | -1,2   | 2 038     | -1,1   | 2 449          | -0,8   |
|      | 7     | 5 321 | -1,3   | 2 898    | -1,5   | 2 008     | -1,5   | 2 423          | -1,1   |
|      | 8     | 5 277 | -0,8   | 2 867    | -1,1   | 1 983     | -1,2   | 2 411          | -0,5   |
|      | 9     | 5 232 | -0,9   | 2 829    | -1,3   | 1 956     | -1,4   | 2 404          | -0,3   |
|      | 10    | 5 174 | -1,1   | 2 791    | -1,3   | 1 926     | -1,5   | 2 384          | -0,8   |
|      | 11    | 5 116 | -1,1   | 2 770    | -0,7   | 1 905     | -1,1   | 2 346          | -1,6   |
|      | 12    | 5 071 | -0,9   | 2 767    | -0,1   | 1 897     | -0,4   | 2 304          | -1,8   |
| 2020 | 1     | 5 022 | -1,0   | 2 759    | -0,3   | 1 899     | 0,1    | 2 263          | -1,8   |
|      | 2     | 4 958 | -1,3   | 2 743    | -0,6   | 1 906     | 0,4    | 2 215          | -2,1   |
|      | 3     | 4 913 | -0,9   | 2 736    | -0,3   | 1 911     | 0,3    | 2 178          | -1,7   |
|      | 4     | 4 875 | -0,8   | 2 726    | -0,3   | 1 904     | -0,4   | 2 149          | -1,3   |
|      | 5     | 4 818 | -1,2   | 2 705    | -0,8   | 1 886     | -0,9   | 2 114          | -1,6   |
|      | 6     | 4 787 | -0,6   | 2 697    | -0,3   | 1 881     | -0,3   | 2 091          | -1,1   |
|      | 7     | 4 819 | 0,7    | 2 717    | 0,8    | 1 900     | 1,0    | 2 102          | 0,5    |
|      | 8     | 4 869 | 1,0    | 2 740    | 0,9    | 1 924     | 1,2    | 2 129          | 1,3    |
|      | 9     | 4 899 | 0,6    | 2 752    | 0,4    | 1 942     | 1,0    | 2 147          | 0,8    |
|      | 10    | 4 933 | 0,7    | 2 766    | 0,5    | 1 960     | 0,9    | 2 167          | 0,9    |
|      | 11    | 4 978 | 0,9    | 2 781    | 0,6    | 1 971     | 0,6    | 2 197          | 1,4    |
|      | 12    | 5 025 | 0,9    | 2 796    | 0,5    | 1 974     | 0,1    | 2 229          | 1,5    |
| 2021 | 1     | 5 086 | 1,2    | 2 821    | 0,9    | 1 980     | 0,3    | 2 265          | 1,6    |
|      | 2     | 5 165 | 1,5    | 2 852    | 1,1    | 1 992     | 0,6    | 2 313          | 2,1    |
|      | 3     | 5 237 | 1,4    | 2 871    | 0,7    | 1 999     | 0,4    | 2 366          | 2,3    |
|      | 4     | 5 298 | 1,2    | 2 888    | 0,6    | 2 006     | 0,3    | 2 409          | 1,8    |
|      | 5     | 5 381 | 1,6    | 2 937    | 1,7    | 2 039     | 1,6    | 2 445          | 1,5    |
|      | 6     | 5 508 | 2,4    | 3 039    | 3,5    | 2 111     | 3,5    | 2 469          | 1,0    |
|      | 7     | 5 647 | 2,5    | 3 163    | 4,1    | 2 205     | 4,5    | 2 484          | 0,6    |
|      | 8     | 5 784 | 2,4    | 3 283    | 3,8    | 2 303     | 4,4    | 2 501          | 0,7    |
|      | 9     | 5 927 | 2,5    | 3 389    | 3,2    | 2 390     | 3,8    | 2 539          | 1,5    |
|      | 10    | 6 027 | 1,7    | 3 453    | 1,9    | 2 441     | 2,1    | 2 575          | 1,4    |
|      | 11    | 6 064 | 0,6    | 3 484    | 0,9    | 2 466     | 1,0    | 2 580          | 0,2    |
|      | 12    | 6 065 | 0,0    | 3 497    | 0,4    | 2 482     | 0,6    | 2 588          | -0,5   |

**Trend figures of import<sup>2</sup>**

| Year | Month | Total | Change | EU total | Change | Euro zone | Change | External trade | Change |
|------|-------|-------|--------|----------|--------|-----------|--------|----------------|--------|
| 2019 | 1     | 5 529 |        | 3 208    |        | 2 129     |        | 2 321          |        |
|      | 2     | 5 524 | -0,1   | 3 215    | 0,2    | 2 138     | 0,4    | 2 309          | -0,5   |
|      | 3     | 5 550 | 0,5    | 3 224    | 0,3    | 2 148     | 0,5    | 2 325          | 0,7    |
|      | 4     | 5 583 | 0,6    | 3 229    | 0,1    | 2 153     | 0,3    | 2 354          | 1,2    |
|      | 5     | 5 589 | 0,1    | 3 221    | -0,2   | 2 149     | -0,2   | 2 367          | 0,6    |
|      | 6     | 5 568 | -0,4   | 3 208    | -0,4   | 2 136     | -0,6   | 2 360          | -0,3   |
|      | 7     | 5 545 | -0,4   | 3 200    | -0,2   | 2 126     | -0,5   | 2 344          | -0,7   |
|      | 8     | 5 513 | -0,6   | 3 196    | -0,1   | 2 122     | -0,2   | 2 317          | -1,2   |
|      | 9     | 5 467 | -0,8   | 3 186    | -0,3   | 2 119     | -0,1   | 2 280          | -1,6   |
|      | 10    | 5 423 | -0,8   | 3 169    | -0,5   | 2 112     | -0,3   | 2 254          | -1,2   |
|      | 11    | 5 404 | -0,3   | 3 155    | -0,4   | 2 107     | -0,2   | 2 249          | -0,2   |
|      | 12    | 5 408 | 0,1    | 3 156    | 0,0    | 2 114     | 0,3    | 2 252          | 0,2    |
| 2020 | 1     | 5 404 | -0,1   | 3 173    | 0,5    | 2 130     | 0,7    | 2 231          | -0,9   |
|      | 2     | 5 364 | -0,7   | 3 191    | 0,6    | 2 143     | 0,6    | 2 173          | -2,6   |
|      | 3     | 5 312 | -1,0   | 3 195    | 0,1    | 2 147     | 0,2    | 2 117          | -2,6   |
|      | 4     | 5 299 | -0,3   | 3 194    | -0,0   | 2 144     | -0,1   | 2 105          | -0,6   |
|      | 5     | 5 312 | 0,3    | 3 192    | -0,0   | 2 138     | -0,3   | 2 120          | 0,7    |
|      | 6     | 5 318 | 0,1    | 3 190    | -0,1   | 2 131     | -0,3   | 2 129          | 0,4    |
|      | 7     | 5 314 | -0,1   | 3 189    | -0,0   | 2 130     | -0,1   | 2 125          | -0,2   |
|      | 8     | 5 301 | -0,2   | 3 191    | 0,1    | 2 134     | 0,2    | 2 110          | -0,7   |
|      | 9     | 5 279 | -0,4   | 3 189    | -0,1   | 2 133     | -0,0   | 2 090          | -0,9   |
|      | 10    | 5 258 | -0,4   | 3 182    | -0,2   | 2 126     | -0,3   | 2 076          | -0,7   |
|      | 11    | 5 244 | -0,3   | 3 176    | -0,2   | 2 118     | -0,4   | 2 067          | -0,4   |
|      | 12    | 5 261 | 0,3    | 3 184    | 0,2    | 2 119     | 0,1    | 2 076          | 0,4    |
| 2021 | 1     | 5 350 | 1,7    | 3 218    | 1,1    | 2 135     | 0,8    | 2 132          | 2,7    |
|      | 2     | 5 467 | 2,2    | 3 270    | 1,6    | 2 161     | 1,2    | 2 197          | 3,1    |
|      | 3     | 5 550 | 1,5    | 3 320    | 1,5    | 2 188     | 1,3    | 2 230          | 1,5    |
|      | 4     | 5 620 | 1,3    | 3 363    | 1,3    | 2 216     | 1,2    | 2 257          | 1,2    |
|      | 5     | 5 720 | 1,8    | 3 410    | 1,4    | 2 246     | 1,3    | 2 309          | 2,3    |
|      | 6     | 5 859 | 2,4    | 3 464    | 1,6    | 2 278     | 1,5    | 2 395          | 3,7    |
|      | 7     | 6 005 | 2,5    | 3 512    | 1,4    | 2 307     | 1,2    | 2 494          | 4,1    |
|      | 8     | 6 146 | 2,3    | 3 550    | 1,1    | 2 331     | 1,1    | 2 595          | 4,1    |
|      | 9     | 6 311 | 2,7    | 3 594    | 1,2    | 2 359     | 1,2    | 2 717          | 4,7    |
|      | 10    | 6 491 | 2,9    | 3 646    | 1,4    | 2 388     | 1,3    | 2 846          | 4,7    |
|      | 11    | 6 656 | 2,5    | 3 695    | 1,4    | 2 412     | 1,0    | 2 960          | 4,0    |
|      | 12    | 6 776 | 1,8    | 3 730    | 0,9    | 2 426     | 0,6    | 3 046          | 2,9    |

<sup>2</sup> April 2020 has been defined as transitory change for imports and exports according to tests.

Figure 4. Exports 2019-2021 (original, seasonally adjusted and trend)

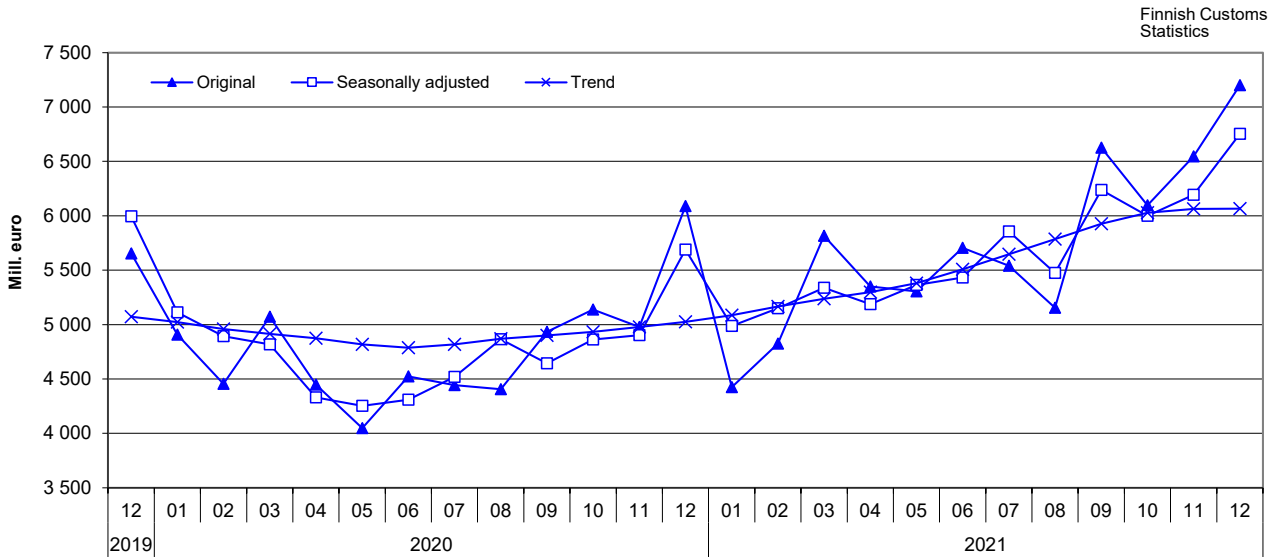
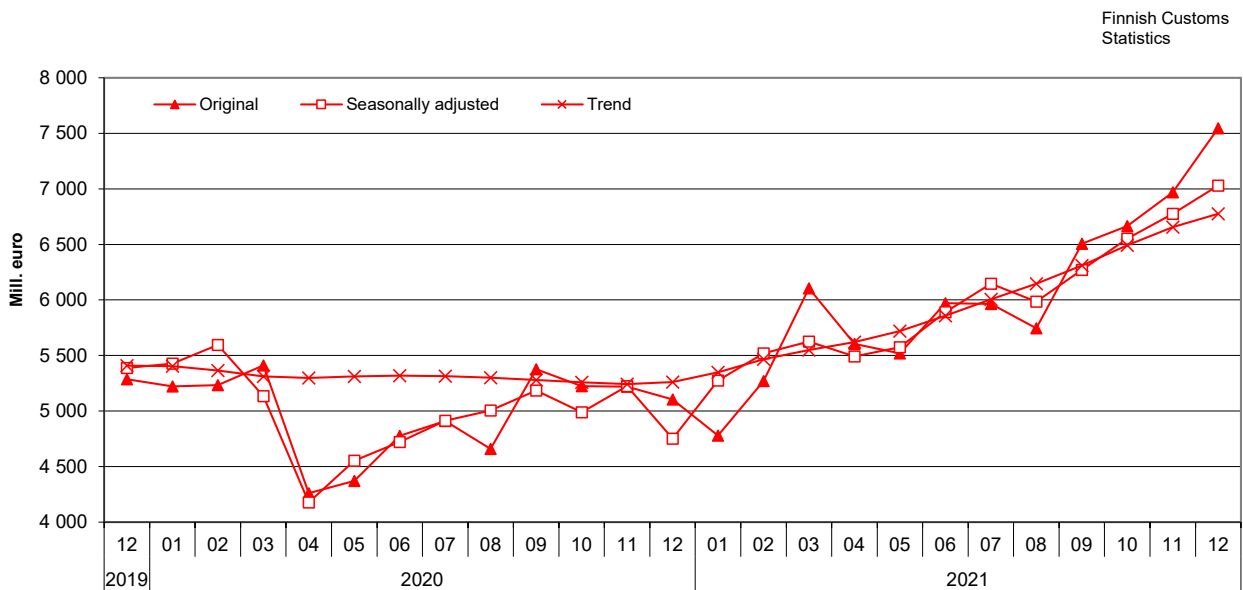


Figure 5. Imports 2019-2021 (original, seasonally adjusted and trend)



<sup>1</sup> Seasonal adjustment is a statistical technique to remove the effects of seasonal calendar influences operating on a series. Irregular fluctuations in the trend series have also been filtered off. The TRAMO/SEATS method recommended by Eurostat has been implemented in the seasonal adjustment of the foreign trade series. Starting July 2019 a new version of Demetra, the JDemetra+2.2.2, has been implemented in calculating seasonal adjustments. Data starting year 2010 is now used in calculation. The time series used is over seven years and in accordance with the recommendations. Because of the program updating and the shorter time series used seasonal adjustments and trend series for previous months have been revised.

**Table 6. Exports and imports by country (main trading partners), preliminary value and change year-on-year \***

| Origin/ destination            | Exports 2021              |             | Imports 2021              |             |
|--------------------------------|---------------------------|-------------|---------------------------|-------------|
|                                | December                  |             | December                  |             |
|                                | preliminary value<br>MEUR | change<br>% | preliminary value<br>MEUR | change<br>% |
| <b>Total exports / imports</b> | <b>7 200</b>              | <b>18,2</b> | <b>7 545</b>              | <b>47,8</b> |
| DE Germany                     | 841,6                     | 17,9        | 948,2                     | 20,7        |
| SE Sweden                      | 604,4                     | 23,6        | 909,8                     | 69,1        |
| RU Russia                      | 355,8                     | 36,1        | 1 118,9                   | 104,5       |
| IT Italy                       | 1 139,9                   | 766,5       | 177,7                     | 23,5        |
| CN China                       | 320,5                     | 10,7        | 835,6                     | 83,9        |
| NL Netherlands                 | 458,4                     | 17,7        | 367,1                     | 50,7        |
| US USA                         | 487,9                     | -62,5       | 182,2                     | 0,5         |
| EE Estonia                     | 235,6                     | 70,8        | 226,2                     | 31,5        |
| PL Poland                      | 160,0                     | 23,8        | 256,3                     | 38,9        |
| BE Belgium                     | 228,7                     | 59,1        | 184,3                     | 58,6        |
| FR France                      | 194,3                     | 22,4        | 178,8                     | 30,0        |
| NO Norway                      | 135,0                     | 15,0        | 195,0                     | 48,7        |
| GB United Kingdom              | 195,4                     | -16,3       | 130,4                     | 3,5         |
| DK Denmark                     | 106,0                     | 8,8         | 131,2                     | -4,6        |
| JP Japan                       | 169,0                     | 67,4        | 63,2                      | 22,4        |
| ES Spain                       | 90,7                      | -5,3        | 120,2                     | -17,4       |
| KR South Korea                 | 55,3                      | 11,1        | 115,7                     | 208,7       |
| CH Switzerland                 | 99,6                      | -13,2       | 54,9                      | 23,2        |
| TR Turkey                      | 93,5                      | 38,6        | 50,4                      | 20,5        |
| LT Lithuania                   | 65,3                      | 16,7        | 67,4                      | 14,0        |
| CZ Czechia                     | 35,2                      | 78,8        | 86,4                      | -13,5       |
| TW Taiwan                      | 28,2                      | 7,8         | 92,0                      | 245,1       |
| AT Austria                     | 35,5                      | -0,1        | 70,8                      | 6,7         |
| CA Canada                      | 62,1                      | 9,5         | 36,8                      | 0,5         |
| BR Brazil                      | 49,5                      | 11,3        | 49,4                      | 138,1       |

\* The values in the table are preliminary and significant changes are possible when data becomes more complete

Note. From the beginning of 2021, the international trade in goods between Northern Ireland and Finland is no longer included in the international trade between Great Britain (GB) and Finland. The details of Northern Ireland are published separately with the country code XI and the details of Great Britain are still published with the country code GB. The data of international trade in goods for both country codes are considered as being part of the non-EU trade.

Preliminary statistics on the international trade in goods, December 2021  
2021:E12EN, 7.2.2022

Inquiries:

Kaarna, Anssi tfn 040 332 8153

Telasuo, Christina tfn 040 332 1828

E-mail: [forename.surname@tulli.fi](mailto:forename.surname@tulli.fi)

Monthly statistics for December 2021 is published 28.2.2022.

More specific data on countries and goods, as well as statistics on logistics, are available free of charge via the Uljas statistical database: [uljas.tulli.fi](https://uljas.tulli.fi).

ISSN 1796-0479 = Official Statistics of Finland (pdf)

ISSN 2670-0565 = Preliminary statistics on the international trade in goods (web publication)

Contact information:

Finnish Customs  
Statistics

Opastinsilta 12  
PO Box 512  
FI-00101 Helsinki

Exchange + 358 295 5200  
Statistics service + 358 295 52335  
[statistics@tulli.fi](mailto:statistics@tulli.fi)