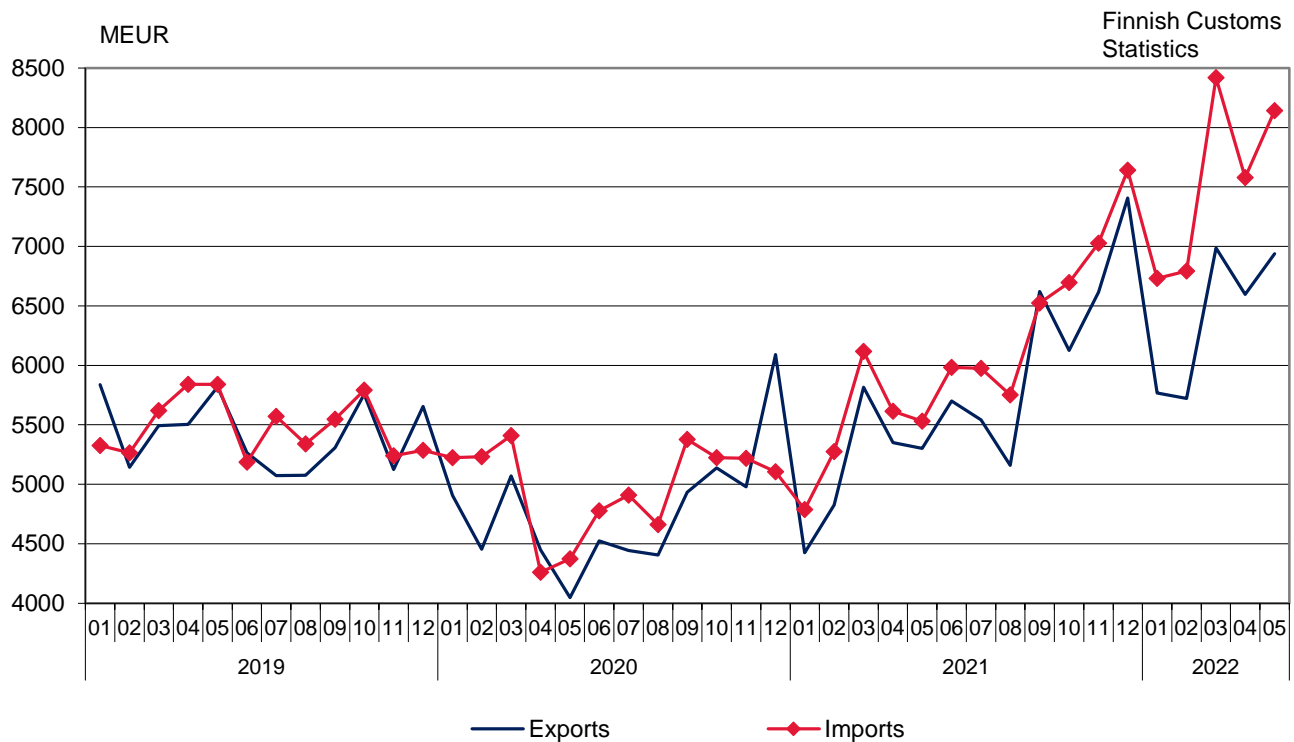


Monthly statistics on the international trade in goods

May 2022

Figure 1. Exports and imports of Finland 2019 – 2022



Helsinki 29.7.2022. Free for publication at 9.00 a.m.

Quoting is encouraged provided Finnish Customs is acknowledged as the source.

Export volume decreased, but both export and import prices increased in May

The value of Finnish exports of goods increased by 30.8 per cent year-on-year in May, according to the international trade in goods statistics provided by Finnish Customs. The value of Finnish exports was EUR 6.9 billion. Export volume decreased by 1.5 per cent, but export prices increased by 32.7 per cent year-on-year. The value of imports increased by 47.2 per cent in May to EUR 8.1 billion. Import prices increased by 33.5 per cent and import volume by 10.4 per cent compared to May 2021. In January-May, the aggregated value of exports increased by 24.5 per cent and the value of imports by 37.8 per cent compared with the corresponding period last year.

In May 2022, the trade balance showed a deficit of EUR 1.2 billion. In January-May 2022, the trade balance had an aggregated deficit of EUR 5.7 billion. The deficit was EUR 4.0 billion higher than in the corresponding period last year. The aggregate trade surplus by commodity group for mechanical forest industry products increased in January-May compared with the corresponding period in 2021. The trade balance surplus in industrial machinery and equipment decreased from a year ago, but the trade balance surplus in metals increased. Trade balance deficit increased in the trade in energy products, ores and scrap metal and electrical machinery and equipment, but decreased in the trade in transport equipment in January-May compared to same period the previous year.

The terms of trade weakened in May compared to the corresponding month of 2021 as import prices increased more than export prices. The point figure in May was 96.9, while it was 97.5 in May 2021. The terms of trade improved from April 2022.

The value of exports of capital goods increased by 2.2 per cent in May and the value of exports of industrial supplies by 26.7 per cent year-on-year. The value of exports of fuels and lubricants increased by 355.8 per cent. The value of exports of consumer goods rose by 22.2 per cent and the value of exports of food and beverages by 29.0 per cent. The value of exports of transport equipment and parts rose by 48.6 per cent.

The value of imports of industrial supplies increased by 37.1 per cent in May, and the value of imports of capital goods rose by 24.3 per cent year-on-year. The value of imports of transport equipment and parts increased by 29.2 per cent. The value of imports of fuels and lubricants rose by 293.5 per cent. The value of imports of food and beverages increased by 26.5 per cent and the value of imports of consumer goods by 10.1 per cent.

Exports to EU countries rose by 39.6 per cent and exports to non-EU countries by 20.9 per cent in May. Imports from EU countries rose by 29.3 per cent and imports from outside the EU by 75.2 per cent in May. In January-May, total exports to EU countries increased by 31.6 per cent and exports to non-EU countries by 15.8 per cent. During the same period, imports from EU countries rose by 24.9 per cent and from outside the EU by 57.1 per cent.

Table 1. Total development (e million)

	May		Change	January-May		Change
	2021	2022	%	2021	2022	%
Exports (fob)	5 303	6 939	30,8	25 718	32 012	24,5
Imports (cif)	5 531	8 141	47,2	27 327	37 665	37,8
Trade balance	-228	-1 203		-1 609	-5 653	

Table 2. International trade indexes

2020=100	May		Change %		Average *	Change %
	2021:05	2022:05	2022:05/ 2022:04	2022:05/ 2021:05	2021:06-2022:05	2021:06-2022:05/ 2020:06-2021:05
Volume index						
Exports	100,6	99,1	1,9	-1,5	103,5	1,5
Imports	98,1	108,3	7,5	10,4	105,5	5,5
Unit value index						
Exports	110,1	146,1	3,5	32,7	126,1	23,1
Imports	113,0	150,8	0,6	33,5	131,1	25,9

* Moving 12-month averages

Note. Base year is now 2020=100

Figure 2. Trade balance (EUR million) in combined SITC commodity groups in January-May 2021 and 2022

Finnish
Customs
Statistics

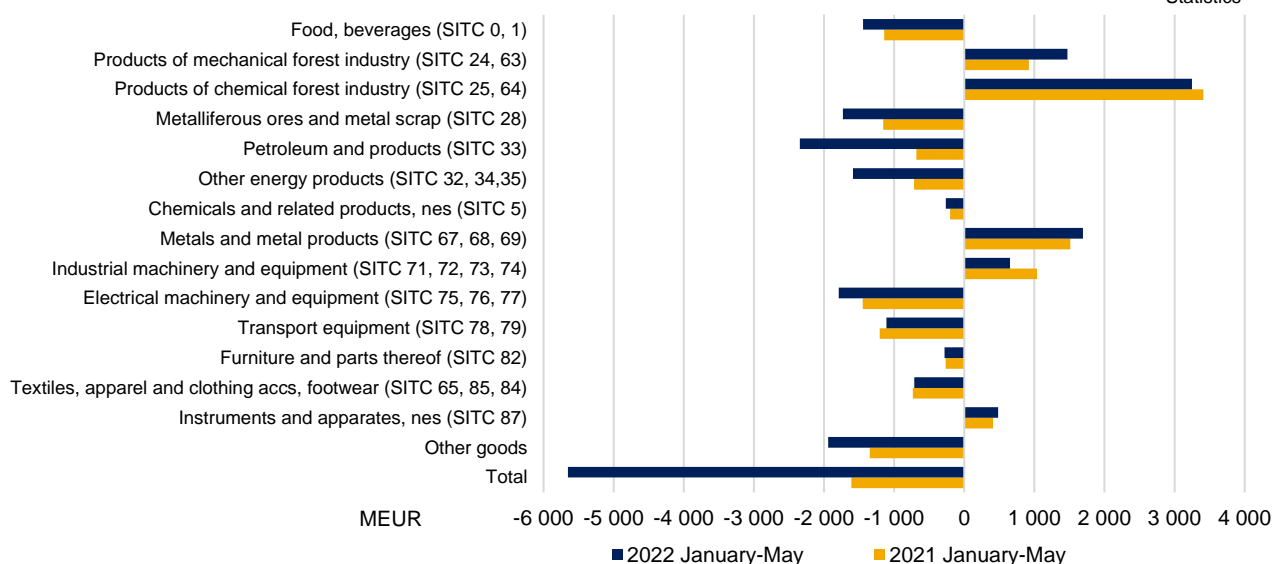


Table 3. Trade balance (EUR million) in combined SITC commodity groups in January-May 2021 and 2022

	Trade balance 2021 (01-05)	Trade balance 2022 (01-05)	Share of exports % 2022 (01-05)*	Share of imports % 2022 (01-05)*
Food, beverages (SITC 0, 1)	-1 143	-1 443	2,5	6,0
Products of mechanical forest industry (SITC 24, 63)	922	1 471	5,8	1,0
Products of chemical forest industry (SITC 25, 64)	3 409	3 247	11,3	1,0
Metalliferous ores and metal scrap (SITC 28)	-1 156	-1 730	4,0	8,0
Petroleum and products (SITC 33)	-682	-2 344	8,5	13,5
Other energy products (SITC 32, 34,35)	-716	-1 586	1,3	5,3
Chemicals and related products, nes (SITC 5)	-202	-264	11,9	10,8
Metals and metal products (SITC 67, 68, 69)	1 512	1 693	16,0	9,1
Industrial machinery and equipment (SITC 71, 72, 73, 74)	1 037	652	13,5	9,7
Electrical machinery and equipment (SITC 75, 76, 77)	-1 447	-1 791	7,1	10,8
Transport equipment (SITC 78, 79)	-1 205	-1 109	6,5	8,4
Furniture and parts thereof (SITC 82)	-266	-282	0,4	1,1
Textiles, apparel and clothing accs, footwear (SITC 65, 85, 84)	-733	-713	0,9	2,6
Instruments and apparatuses, nes (SITC 87)	411	484	3,4	1,6
Other goods	-1 348	-1 941	7,1	11,2
Total	-1 609	-5 653	100,0	100,0

* Share of total imports / exports

Figure 3. Volume index 2020–2022
2020 = 100

Finnish Customs
Statistics

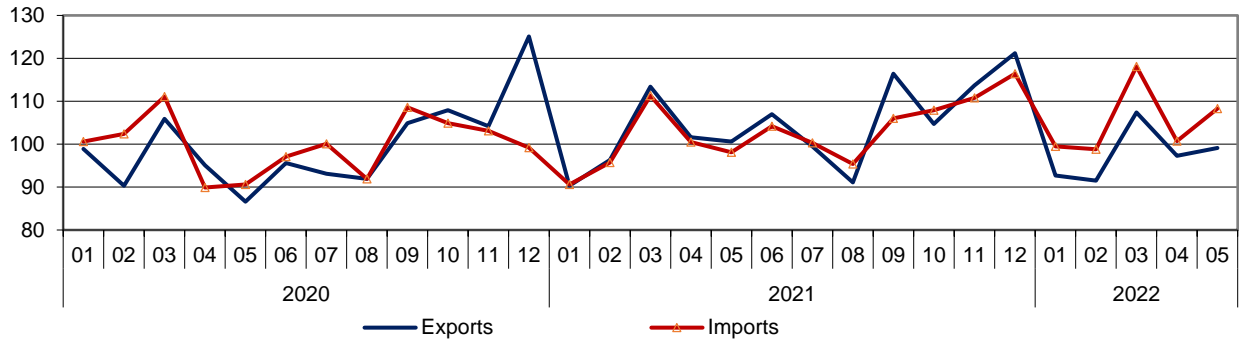


Figure 4. Unit value index and Terms of trade 2020–2022
2020 = 100

Finnish Customs
Statistics

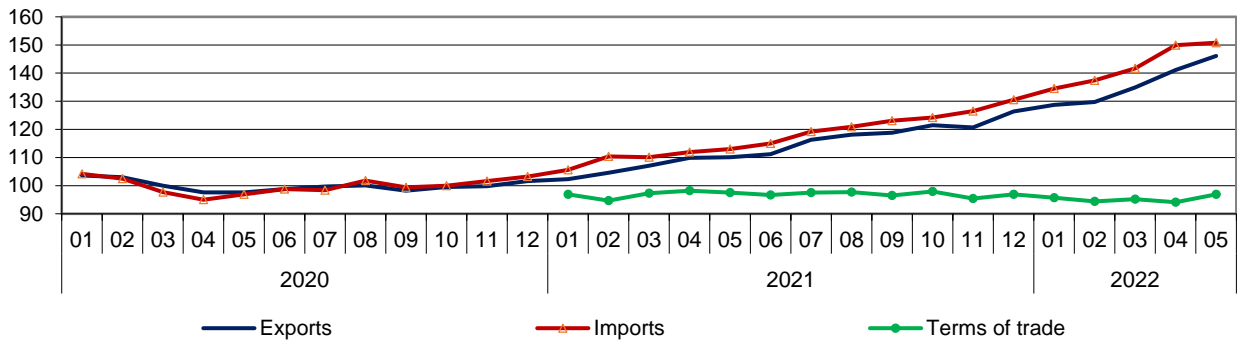


Figure 5. Exports by Products by Activity (CPA) 2019 – 2022

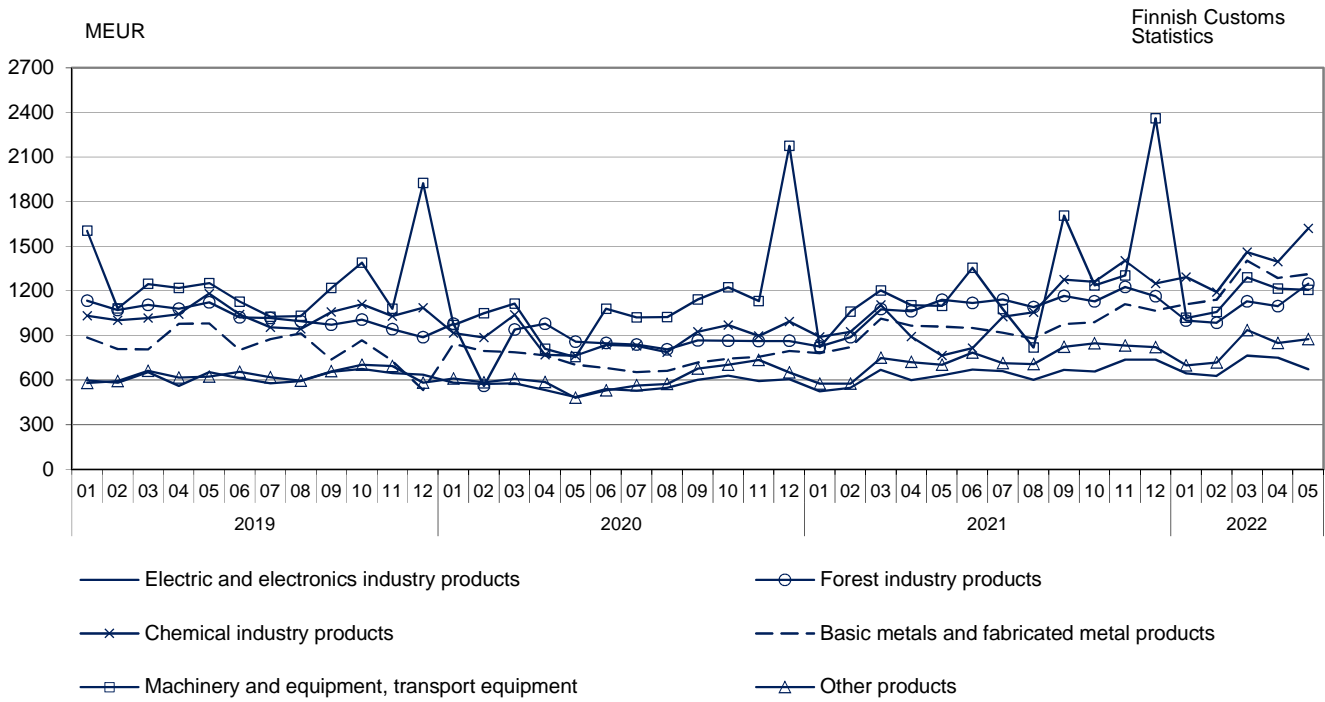


Figure 6. Imports by broad economic categories (BEC) 2019 – 2022

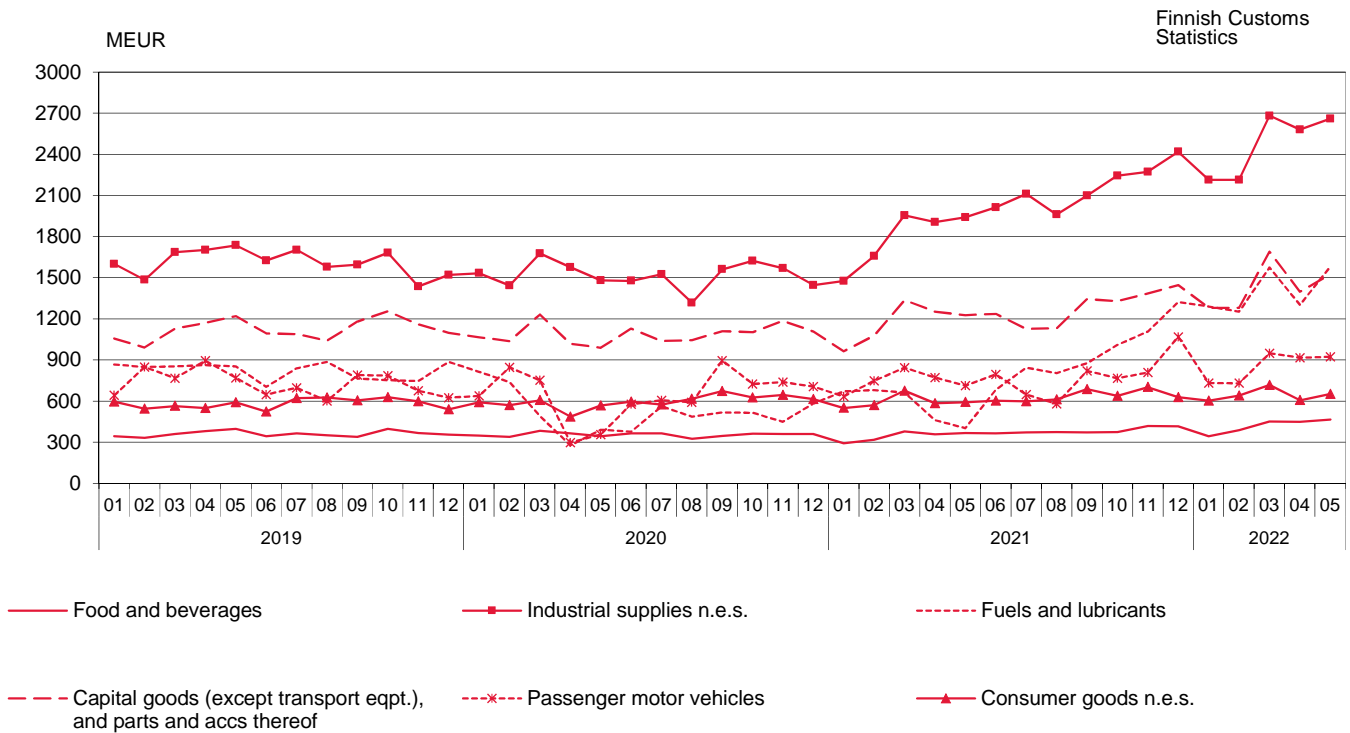


Figure 7. Volume index of Exports by months 2020–2022
2020 = 100

Finnish Customs
Statistics

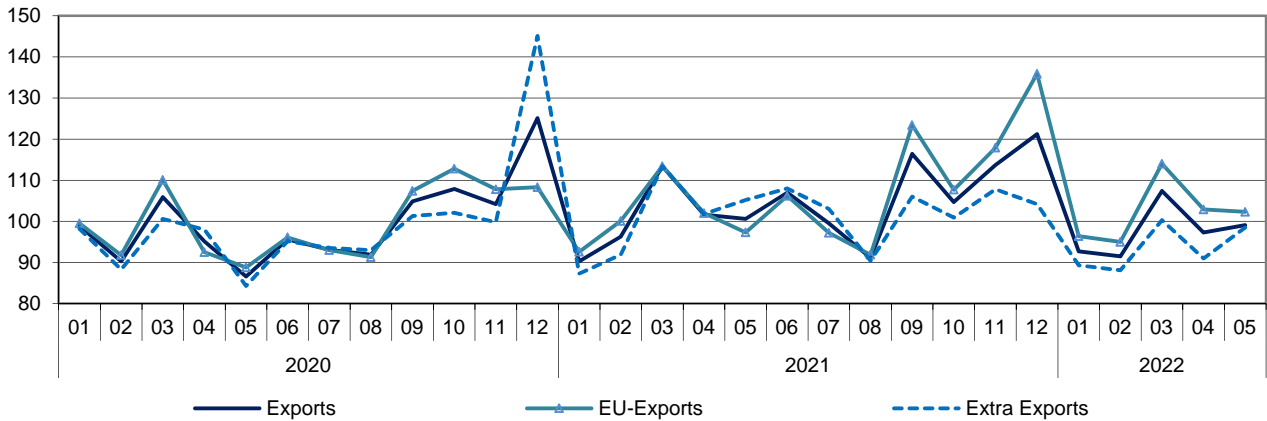


Figure 8. Volume index of Imports by months 2020–2022
2020 = 100

Finnish Customs
Statistics

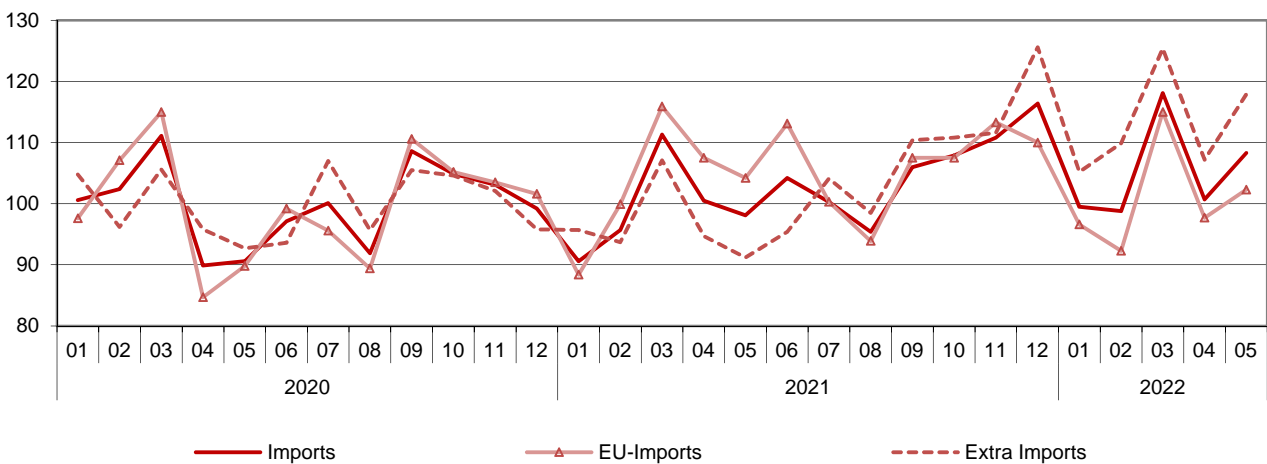


Figure 9. Unit value index of Exports by months 2020–2022
2020 = 100

Finnish Customs
Statistics

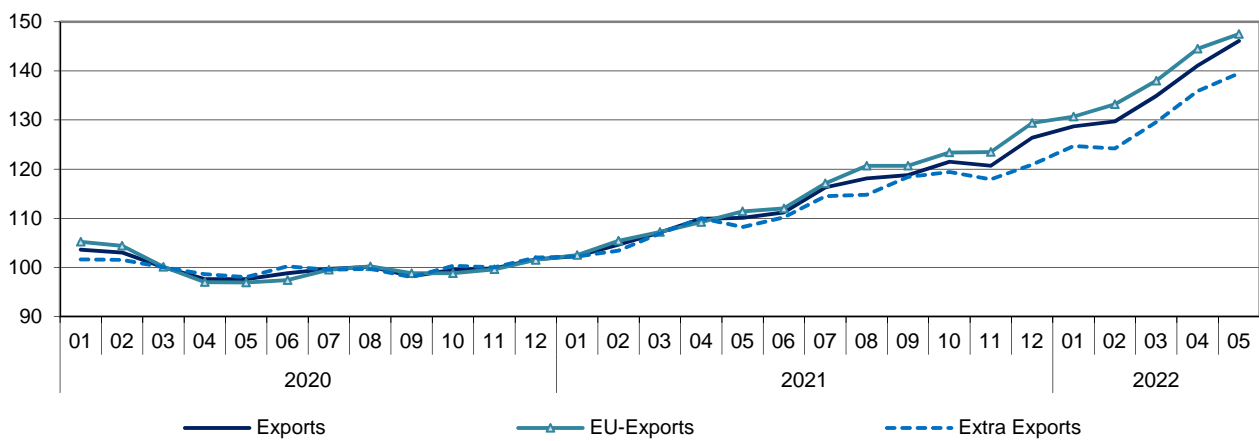


Figure 10. Unit value index of Imports by months 2020–2022
2020 = 100

Finnish Customs
Statistics

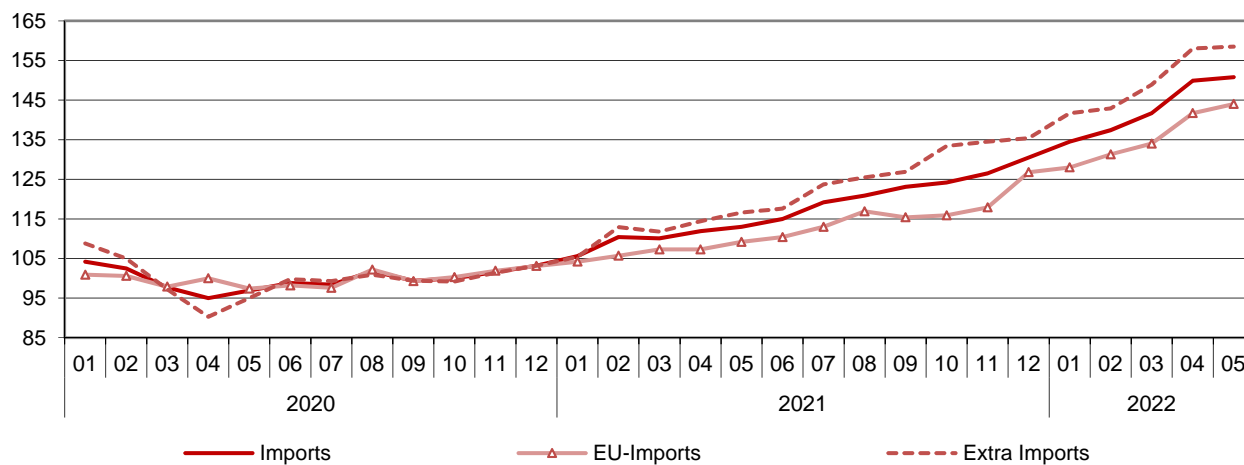


Table 4. International trade indexes
2020=100

	May		Change %		Average *	Change %
	2021:05	2022:05	2022:05/ 2022:04	2022:05/ 2021:05		
Volume index						
Exports	100,6	99,1	1,9	-1,5	103,5	1,5
EU-Exports	97,3	102,3	-0,6	5,2	107,5	5,8
Extra Exports	105,2	98,5	8,3	-6,3	99,0	-3,2
Imports	98,1	108,3	7,5	10,4	105,5	5,5
EU-Imports	104,2	102,3	4,7	-1,9	104,1	2,5
Extra Imports	91,2	117,9	10,0	29,3	110,2	11,3
Unit value index						
Exports	110,1	146,1	3,5	32,7	126,1	23,1
EU-Exports	111,4	147,5	2,1	32,5	128,4	25,4
Extra Exports	108,2	139,5	2,7	28,9	122,5	19,7
Imports	113,0	150,8	0,6	33,5	131,1	25,9
EU-Imports	109,2	144,0	1,6	31,9	124,6	21,2
Extra Imports	116,6	158,5	0,3	35,9	137,2	30,8
Terms of Trade	97,5	96,9	2,9	-0,7	96,2	

* Moving 12-month averages

Table 5. Exports by SITC

SITC Rev.4		May 2022			January-May 2022		
		value MEUR	share %	change %	value MEUR	share %	change %
	Total exports	6 939	100,0	30,8	32 012	100,0	24,5
0	Food and live animals	169	2,4	27,8	728	2,3	15,9
02	Dairy products and birds' eggs	51	0,7	21,7	221	0,7	20,1
05	Vegetables and fruit	7	0,1	39,9	34	0,1	36,4
1	Beverages and tobacco	20	0,3	31,6	76	0,2	37,9
2	Crude materials, inedible, except fuels	828	11,9	10,9	3 707	11,6	16,9
212	Furskins, raw	4	0,1	-65,3	42	0,1	-68,4
24	Cork and wood	306	4,4	38,7	1 321	4,1	37,7
248	Wood, simply worked	291	4,2	35,8	1 265	4,0	37,4
25	Pulp and waste paper	199	2,9	-28,5	947	3,0	-7,4
28	Metalliferous ores and metal scrap	290	4,2	34,5	1 291	4,0	32,7
3	Mineral fuels etc	791	11,4	392,9	3 132	9,8	110,9
33	Petroleum and products	711	10,3	454,0	2 724	8,5	104,6
4	Animal, vegetable oil, fat	2	0,0	14,2	11	0,0	-0,5
5	Chemicals and related products, nes	807	11,6	44,4	3 804	11,9	31,3
51+52	Organic and inorganic chemicals	267	3,9	116,3	1 190	3,7	57,3
54	Medicinal, pharm. products	98	1,4	14,6	402	1,3	-4,4
57+58	Plastics in primary and non-primary forms	238	3,4	18,0	1 092	3,4	21,6
6	Basic manufactures	1 976	28,5	28,2	8 960	28,0	24,3
63	Wood and cork manufactures	117	1,7	45,9	538	1,7	43,1
634	Plywood, particle board etc	72	1,0	29,0	329	1,0	25,2
64	Paper, paperboard and articles thereof	634	9,1	13,1	2 671	8,3	0,7
65	Textile yarn, fabrics, made up articles, etc	31	0,4	14,4	149	0,5	11,3
67	Iron and steel	665	9,6	54,6	2 908	9,1	51,8
68	Non-ferrous metals	300	4,3	16,8	1 621	5,1	30,4
69	Manufactures of metals, nes	117	1,7	7,7	582	1,8	16,1
7	Machinery, transport equipmt	1 752	25,2	7,4	8 644	27,0	11,8
71	Power generating machinery and equipment	150	2,2	-21,1	882	2,8	23,2
72	Machinery for special industries	419	6,0	-13,9	2 059	6,4	-1,5
74	General industrl machy, nes	273	3,9	15,2	1 265	4,0	9,3
75	Office machines and adp machines	27	0,4	-2,2	157	0,5	5,3
76	Telecomm, sound recording equipment	64	0,9	-15,0	331	1,0	-7,1
77	Electric machinery, nes and parts	351	5,1	16,9	1 772	5,5	21,6
78	Road vehicles	395	5,7	68,7	1 865	5,8	23,1
79	Other transport equipment	49	0,7	-21,0	202	0,6	5,1
793	Ships and boats etc	40	0,6	12,1	127	0,4	-11,3
8	Miscellaneous manufactured articles	386	5,6	14,6	1 888	5,9	13,3
82	Furniture and parts thereof	21	0,3	20,8	125	0,4	53,8
84	Articles of apparel and clothing accessories	13	0,2	-16,1	87	0,3	-2,6
85	Footwear	10	0,1	22,8	45	0,1	7,3
87	Instruments and apparatuses, nes	226	3,3	24,4	1 076	3,4	12,7
9	Goods not classified elsewhere	207	3,0	16,1	1 062	3,3	23,2

Table 6. Imports by SITC

SITC Rev.4		May 2022			January-May 2022		
		value MEUR	share %	change %	value MEUR	share %	change %
	Total imports	8 141	100,0	47,2	37 665	100,0	37,8
0	Food and live animals	447	5,5	29,0	2 001	5,3	22,7
02	Dairy products and birds' eggs	40	0,5	11,7	172	0,5	10,8
05	Vegetables and fruit	95	1,2	-3,1	453	1,2	-1,9
1	Beverages and tobacco	64	0,8	28,9	246	0,7	25,5
2	Crude materials, inedible, except fuels	731	9,0	19,9	3 769	10,0	33,8
212	Furskins, raw	5	0,1	-12,2	119	0,3	5,7
24	Cork and wood	33	0,4	-44,8	210	0,6	-24,5
248	Wood, simply worked	14	0,2	-9,5	87	0,2	38,2
25	Pulp and waste paper	18	0,2	122,9	79	0,2	177,2
28	Metalliferous ores and metal scrap	590	7,2	24,1	3 021	8,0	41,8
3	Mineral fuels etc	1 618	19,9	295,9	7 062	18,7	144,9
33	Petroleum and products	1 156	14,2	349,1	5 068	13,5	151,8
4	Animal, vegetable oil, fat	57	0,7	330,9	294	0,8	165,2
5	Chemicals and related products, nes	837	10,3	26,5	4 067	10,8	31,2
51+52	Organic and inorganic chemicals	255	3,1	56,5	1 178	3,1	63,1
54	Medicinal, pharm. products	187	2,3	-0,4	989	2,6	9,2
57+58	Plastics in primary and non-primary forms	195	2,4	27,9	869	2,3	30,4
6	Basic manufactures	1 137	14,0	52,3	4 922	13,1	45,0
63	Wood and cork manufactures	42	0,5	33,7	177	0,5	31,5
634	Plywood, particle board etc	23	0,3	29,2	95	0,3	32,0
64	Paper, paperboard and articles thereof	60	0,7	21,1	292	0,8	23,1
65	Textile yarn, fabrics, made up articles, etc	70	0,9	11,5	330	0,9	5,4
67	Iron and steel	328	4,0	96,2	1 341	3,6	84,2
68	Non-ferrous metals	240	2,9	110,0	971	2,6	87,5
69	Manufactures of metals, nes	242	3,0	20,4	1 104	2,9	22,7
7	Machinery, transport equipmt	2 344	28,8	24,6	10 892	28,9	16,5
71	Power generating machinery and equipment	274	3,4	84,5	1 074	2,9	33,4
72	Machinery for special industries	181	2,2	4,8	894	2,4	12,4
74	General industrl machy, nes	349	4,3	30,1	1 597	4,2	18,0
75	Office machines and adp machines	119	1,5	-25,3	725	1,9	4,8
76	Telecomm, sound recording equipment	181	2,2	-0,1	872	2,3	-0,3
77	Electric machinery, nes and parts	501	6,2	35,6	2 453	6,5	33,1
78	Road vehicles	622	7,6	15,9	2 824	7,5	3,5
79	Other transport equipment	93	1,1	210,0	352	0,9	92,6
793	Ships and boats etc	74	0,9	592,2	188	0,5	236,6
8	Miscellaneous manufactured articles	566	7,0	7,6	2 803	7,4	8,9
82	Furniture and parts thereof	79	1,0	10,8	407	1,1	17,0
84	Articles of apparel and clothing accessories	102	1,2	-6,4	524	1,4	-7,3
85	Footwear	30	0,4	48,6	140	0,4	16,8
87	Instruments and apparatuses, nes	118	1,5	5,3	591	1,6	8,7
9	Goods not classified elsewhere	339	4,2	17,9	1 609	4,3	26,5

Table 7. Exports and imports by Products by Activity (CPA2015)

Products by Activity		Exports 2022				Imports 2022			
		May	January-May			May	January-May		
		value MEUR	value MEUR	share %	change %	value MEUR	value MEUR	share %	change %
Total exports / imports		6 939	32 012	100,0	24,5	8 141	37 665	100	37,8
A	Products of agriculture, forestry and fishing	57	245	0,8	-13,4	194	952	2,5	15,0
B	Products from mining and quarrying	124	577	1,8	35,0	1 286	5 486	14,6	108,9
061	Crude petroleum	-	0	0,0	-39,5	707	3 087	8,2	199,1
C	Manufactured goods	6 492	29 922	93,5	24,0	5 919	27 677	73,5	28,3
10-12	Food, beverages and tobacco	156	686	2,1	15,2	388	1 713	4,5	15,4
13-15	Textiles, clothes, leather and leather products	58	298	0,9	6,2	201	970	2,6	7,7
16-18	Forest industry products	1 248	5 460	17,1	9,3	142	710	1,9	23,9
16	Wood and wood products	417	1 848	5,8	39,0	64	338	0,9	12,9
17	Paper, paper and paperboard products, pulp	832	3 611	11,3	-1,5	77	371	1	36,2
19-22	Chemical industry products	1 620	6 963	21,8	52,1	1 572	7 221	19,2	46,0
19	Coke and petroleum products	639	2 424	7,6	98,3	497	2 083	5,5	98,8
20	Chemicals and chemical products	700	3 327	10,4	47,6	681	3 180	8,4	51,3
21	Pharmaceutical products and pharmaceutical preparations	106	444	1,4	-3,3	189	1 005	2,7	9,6
22	Rubber and plastic products	175	767	2,4	19,4	205	953	2,5	8,4
23	Other non-metallic mineral products	61	275	0,9	15,8	98	431	1,1	25,4
24-25	Metal and metal products	1 313	6 254	19,5	37,6	877	4 224	11,2	59,5
24	Basic metals	1 185	5 577	17,4	41,8	623	3 059	8,1	78,0
25	Fabricated metal products (excl. machinery and equipment)	128	677	2,1	10,7	254	1 165	3,1	25,2
26-27	Electric and electronics industry products	673	3 463	10,8	16,3	938	4 683	12,4	19,5
26	Computers, electronic and optical products	299	1 580	4,9	11,9	520	2 649	7	11,8
263	Communication equipment	49	260	0,8	-12,3	125	613	1,6	0,0
27	Electrical equipment	374	1 883	5,9	20,2	418	2 034	5,4	31,3
28	Machinery and equipment	762	3 763	11,8	4,4	709	3 147	8,4	18,0
29-30	Transport equipment	445	2 029	6,3	20,3	807	3 595	9,5	11,2
29	Motor vehicles	377	1 722	5,4	19,9	659	3 002	8	4,1
30	Other transport equipment	68	307	1,0	22,4	149	593	1,6	69,2
31-33	Other manufactured goods	154	731	2,3	17,2	187	982	2,6	14,4
D	Electricity, gas, steam, air conditioning *	50	262	0,8	128,4	190	906	2,4	104,0
E-X	Other products	216	1 005	3,1	31,0	552	2 643	7	42,7
E 381158	Metal waste	0	0	0,0	-100,0	0	2	0	-99,7

* Natural gas B 062

Starting from the statistical year 2022, international trade in goods statistics by CPA-classification are published only according to CPA2015 classification.

Table 8. Imports and exports by BEC goods classification (Broad Economic Categories)

BEC Rev.4		May 2022			January-May 2022		
		value MEUR	share %	change %	value MEUR	share %	change %
Total imports		8 141	100,0	47,2	37 665	100,0	37,8
1	Food and beverages	465	5,7	26,5	2 100	5,6	22,3
2	Industrial supplies not elsewhere specified	2 660	32,7	37,1	12 352	32,8	38,2
3	Fuels and lubricants	1 581	19,4	293,5	6 999	18,6	143,1
31	Primary	910	11,2	2 214,9	4 024	10,7	198,7
32	Processed	670	8,2	85,0	2 975	7,9	94,3
4	Capital goods (except transport equipment), and parts and accessories thereof	1 525	18,7	24,3	7 175	19,0	22,5
5	Transport equipment and parts and accessories thereof	923	11,3	29,2	4 252	11,3	14,6
6	Consumer goods not elsewhere specified	653	8,0	10,1	3 223	8,6	8,4
61	Durable	156	1,9	10,1	741	2,0	5,8
62	Semi-durable	236	2,9	18,9	1 197	3,2	13,5
63	Non-durable	261	3,2	3,1	1 286	3,4	5,4
7	Goods not elsewhere specified	334	4,1	16,5	1 564	4,2	25,1
Total exports		6 939	100,0	30,8	32 012	100,0	24,5
1	Food and beverages	172	2,5	29,0	738	2,3	18,4
2	Industrial supplies not elsewhere specified	3 671	52,9	26,7	16 827	52,6	24,1
3	Fuels and lubricants	735	10,6	355,8	2 903	9,1	103,5
31	Primary	26	0,4	877,0	113	0,4	719,0
32	Processed	709	10,2	347,0	2 790	8,7	97,5
4	Capital goods (except transport equipment), and parts and accessories thereof	1 462	21,1	2,2	7 346	22,9	10,5
5	Transport equipment and parts and accessories thereof	563	8,1	48,6	2 571	8,0	24,6
6	Consumer goods not elsewhere specified	222	3,2	22,2	1 018	3,2	11,1
61	Durable	29	0,4	-6,7	145	0,5	7,3
62	Semi-durable	75	1,1	24,8	387	1,2	18,3
63	Non-durable	118	1,7	30,5	486	1,5	7,1
7	Goods not elsewhere specified	114	1,6	-5,3	609	1,9	26,0

Table 9. Trade by regions and countries

Origin/ destination	Imports 2022				Exports 2022				Trade 2022	
	May	January-May			May	January-May			May	January-May
	value MEUR	value MEUR	share %	change %	value MEUR	value MEUR	share %	change %	value MEUR	value MEUR
Total exports / imports	8 141	37 665	100,0	37,8	6 939	32 012	100	24,5	-1 203	-5 653
EU	4 369	20 453	54,3	24,9	3 950	18 642	58,2	31,6	-420	-1 811
Euro zone	2 832	13 336	35,4	23,3	2 758	12 894	40,3	30,9	-74	-442
External trade	3 772	17 211	45,7	57,1	2 989	13 369	41,8	15,8	-783	-3 842
Developing countries	1 692	6 739	17,9	39,5	962	4 754	14,8	14,9	-730	-1 986
Europe	5 984	28 909	76,8	38,2	4 930	23 025	71,9	25,3	-1 054	-5 884
EU	4 369	20 453	54,3	24,9	3 950	18 642	58,2	31,6	-420	-1 811
AT Austria	78	346	0,9	15,9	50	235	0,7	22,3	-28	-110
BE Belgium	144	731	1,9	20,0	255	1 182	3,7	34,2	111	451
BG Bulgaria	8	44	0,1	25,0	9	39	0,1	13,4	1	-6
CY Cyprus	2	5	0,0	-20,0	3	9	0	83,0	1	4
CZ Czech Republic	104	468	1,2	9,0	50	231	0,7	35,6	-54	-236
DE Germany	1 069	5 043	13,4	19,7	877	4 056	12,7	18,3	-193	-988
DK Denmark	138	793	2,1	12,3	119	594	1,9	32,3	-20	-199
EE Estonia	268	1 245	3,3	40,8	272	1 295	4	57,3	4	50
ES Spain	160	713	1,9	-0,8	102	460	1,4	10,1	-59	-253
FR France	190	830	2,2	13,4	216	1 051	3,3	26,0	27	221
GR Greece	8	86	0,2	37,7	19	87	0,3	34,7	11	1
HU Hungary	49	206	0,5	9,6	21	105	0,3	17,5	-28	-101
HR Croatia	5	20	0,1	39,0	5	24	0,1	45,2	-1	4
IE Ireland	55	246	0,7	-8,0	16	95	0,3	21,6	-40	-150
IT Italy	202	952	2,5	20,8	218	1 065	3,3	35,2	17	113
LT Lithuania	65	308	0,8	34,9	73	346	1,1	5,0	8	37
LU Luxembourg	11	52	0,1	74,3	4	16	0	-6,9	-7	-36
LV Latvia	38	152	0,4	19,0	66	319	1	29,1	28	167
MT Malta	1	3	0,0	-25,6	1	3	0	16,5	0	0
NL Netherlands	453	2 138	5,7	45,2	541	2 463	7,7	55,4	88	325
PL Poland	265	1 224	3,2	28,7	199	979	3,1	30,1	-66	-245
PT Portugal	39	261	0,7	48,2	19	92	0,3	38,0	-20	-169
RO Romania	27	139	0,4	15,1	22	102	0,3	66,4	-5	-37
SE Sweden	940	4 223	11,2	35,8	750	3 600	11,2	32,4	-191	-623
SI Slovenia - Slovenien - Slovenia	12	73	0,2	28,1	6	34	0,1	23,8	-6	-40
SK Slovakia	35	152	0,4	5,5	19	87	0,3	37,6	-16	-65
Rest of Europe	1 615	8 456	22,5	85,9	980	4 383	13,7	4,3	-634	-4 073
CH Switzerland	66	357	0,9	50,8	102	575	1,8	10,5	36	217
GB United Kingdom	182	913	2,4	73,2	380	1 172	3,7	29,4	197	259
XI Northern Ireland	2	11	0,0	-16,8	6	24	0,1	20,6	4	13
IS Iceland	4	7	0,0	91,9	6	37	0,1	76,7	3	30
NO Norway	776	2 598	6,9	460,3	199	890	2,8	31,6	-577	-1 709
RU Russia	453	3 966	10,5	38,2	171	1 132	3,5	-22,6	-282	-2 835
TR Türkiye	98	373	1,0	23,9	87	399	1,2	10,1	-11	25
UA Ukraine	5	43	0,1	37,8	9	49	0,2	-43,6	4	6
North Africa	14	47	0,1	6,6	61	298	0,9	5,3	47	250
EG Egypt	7	21	0,1	32,5	34	173	0,5	11,6	27	152
MA Morocco	6	20	0,1	11,4	11	58	0,2	15,6	6	38
Rest of Africa	121	395	1,0	48,9	85	350	1,1	35,5	-37	-45
ZA South Africa	18	93	0,2	5,4	58	187	0,6	47,0	39	94
Middle East	55	117	0,3	105,7	77	361	1,1	11,0	22	244
AE Arab Emirates	3	12	0,0	192,8	15	70	0,2	2,8	12	58
IL Israel	7	35	0,1	11,2	18	89	0,3	9,6	11	55
SA Saudi Arabia	3	15	0,0	23,5	27	122	0,4	8,4	23	107
Rest of Asia	1 237	5 710	15,2	39,4	770	3 856	12	14,0	-466	-1 854
CN China	726	3 318	8,8	43,4	316	1 560	4,9	0,3	-410	-1 758
HK Hong Kong	6	37	0,1	80,9	9	42	0,1	-14,9	3	5
ID Indonesia	13	63	0,2	-6,2	15	72	0,2	52,5	1	9
IN India	49	239	0,6	44,1	49	250	0,8	16,4	0	11
JP Japan	86	381	1,0	15,4	179	810	2,5	41,0	93	429
KR South Korea	57	287	0,8	26,3	69	430	1,3	32,0	11	144
KZ Kazakhstan	8	11	0,0	703,4	13	52	0,2	52,9	5	41
MY Malaysia	44	181	0,5	-10,0	13	65	0,2	15,8	-30	-116
PH Philippines	16	87	0,2	34,5	14	67	0,2	13,7	-2	-20
SG Singapore	32	137	0,4	114,5	16	71	0,2	14,0	-16	-66
TH Thailand	36	204	0,5	73,7	18	84	0,3	2,6	-18	-120
TW Taiwan	67	325	0,9	102,5	17	101	0,3	-17,2	-50	-224
North America	332	1 431	3,8	34,0	726	2 788	8,7	31,4	394	1 358
CA Canada	25	245	0,6	32,9	77	316	1	-11,4	52	71
US USA	307	1 186	3,1	34,2	648	2 471	7,7	40,1	341	1 286
Middle America	64	228	0,6	-14,5	58	260	0,8	48,5	-6	32
MX Mexico	23	126	0,3	-28,2	45	209	0,7	53,9	22	83
South America	270	670	1,8	22,2	164	714	2,2	44,7	-105	44
AR Argentina	2	7	0,0	41,9	40	124	0,4	350,6	38	117
BR Brazil	207	391	1,0	86,0	58	298	0,9	55,9	-148	-93
CL Chile	29	42	0,1	-62,6	23	98	0,3	17,7	-6	56
CO Colombia	17	71	0,2	106,7	18	66	0,2	77,4	1	-5
Oceania	64	158	0,4	166,4	67	360	1,1	16,2	2	202
AU Australia	19	65	0,2	50,3	59	322	1	15,4	39	257

Table 10. Volume index, exports 2020=100

Products by Activity (CPA2015)	May 2022:05	Change	Change	Effect*	Mean** 2021:06- 2022:05	Change	Weights 2021
		2022:05/ 2022:04	2022:05/ 2021:05	% pp		2021:06- 2022:05	
Total exports	99,1	1,9	-1,5	-1,50	103,5	1,5	1000,0
01 Products of agriculture and hunting	47,5	-25,5	-36,7	-0,41	96,8	-9,3	7,5
10 Food products	99,2	9,2	-8,9	-0,45	95,1	-6,8	19,0
11 Beverages	151,8	32,0	21,8	0,16	128,1	24,6	2,7
13 Textiles	105,6	2,2	-0,3	-0,01	102,9	0,5	5,0
14 Wearing apparel	56,5	-3,5	-9,2	-0,06	91,1	-8,2	3,5
15 Leather and related products	110,1	6,6	19,4	0,09	111,3	7,6	2,3
16 Wood and wood products	114,5	3,1	-2,1	-0,26	109,3	0,7	54,6
171 Pulp, paper and paperboard	88,5	11,6	-23,8	-6,41	94,8	-7,8	130,8
172 Articles of paper and paperboard	119,6	19,3	16,9	0,12	105,3	7,6	3,9
19 Coke and refined petroleum products	82,7	29,5	172,5	6,77	79,8	-11,4	54,7
20 Chemicals and chemical products	106,9	-3,0	10,1	1,85	110,9	7,6	88,8
21 Basic pharmaceutical products and preparations	99,8	23,0	-14,4	-0,61	98,7	-5,9	16,3
22 Rubber and plastic products	121,3	14,8	12,0	0,69	111,6	8,1	24,2
23 Other non-metallic mineral products	129,4	4,9	9,2	0,20	120,8	12,6	8,3
241 Basic iron and steel and ferro-alloys	106,8	7,7	-10,2	-1,29	110,1	6,5	67,9
244 Basic precious and other non-ferrous metals	85,6	-10,8	-9,6	-1,08	90,8	-6,6	66,4
25 Fabricated metal products	98,6	-7,4	-22,0	-1,30	105,8	1,7	20,0
26 Computer, electronic and optical products	105,2	-4,9	0,5	0,06	114,2	8,3	53,5
27 Electrical equipment	124,4	-14,1	14,2	2,10	117,1	17,8	59,2
28 Machinery and equipment	99,9	-5,0	-12,4	-4,32	103,0	1,1	129,3
29 Motor vehicles and trailers	123,5	4,1	65,5	6,43	118,9	9,8	57,5
38 Waste collection, treatment and disposal services	115,8	17,1	3,7	0,04	101,6	5,4	0,3
58 Publishing services	119,6	27,4	75,0	0,05	103,8	7,0	0,5

*Effect of change

** Moving 12-month averages

Table 11. Volume index, imports 2020=100

Products by Activity (CPA2015)	May 2022:05	Change	Change	Effect*	Mean** 2021:06- 2022:05	Change	Weights 2021
		2022:05/ 2022:04	2022:05/ 2021:05	pp 2022:05/ 2021:05		2021:06- 2022:05	
Total imports	108,3	7,5	10,4	10,40	105,5	5,5	1000,0
01 Products of agriculture and hunting	108,4	-5,5	8,1	0,16	103,0	5,1	19,2
061 Crude petroleum	94,6	-2,8	3127,7	4,54	85,8	6,2	49,2
07 Metal ores	144,4	34,8	-5,7	-0,31	116,6	7,0	39,7
10 Food products	95,3	6,7	3,8	0,17	92,5	-4,8	44,0
13 Textiles	85,6	5,9	-1,5	-0,02	82,1	-17,6	9,4
14 Wearing apparel	80,0	0,8	17,1	0,22	90,3	-6,9	15,8
15 Leather and related products	113,6	19,3	30,8	0,17	101,4	3,8	5,7
16 Wood and wood products	77,4	3,2	-24,7	-0,29	93,8	-4,5	10,7
19 Coke and refined petroleum products	109,9	30,0	-2,3	-0,10	101,4	4,2	39,7
20 Chemicals and chemical products	118,5	9,6	21,3	1,63	112,0	13,7	80,6
21 Basic pharmaceutical products and preparations	81,9	-15,6	-15,5	-0,52	100,5	4,2	31,3
22 Rubber and plastic products	111,9	7,3	-9,9	-0,38	108,7	3,8	29,7
23 Other non-metallic mineral products	118,5	9,9	7,2	0,10	106,9	4,8	12,2
241 Basic iron and steel and ferro-alloys	138,7	8,4	23,0	0,49	115,3	17,7	21,0
244 Basic precious and other non-ferrous metals	95,0	-18,4	39,7	0,93	106,2	15,2	37,5
25 Fabricated metal products	129,5	1,9	-3,8	-0,17	125,8	16,6	33,1
26 Computer, electronic and optical products	105,0	4,1	-7,2	-0,73	115,3	8,6	86,2
27 Electrical equipment	130,7	8,5	18,4	1,18	123,6	16,8	57,0
28 Machinery and equipment	141,3	18,6	15,3	1,72	118,7	12,4	88,9
29 Motor vehicles and trailers	119,8	8,6	8,0	0,85	110,7	-1,3	93,3
35 Electricity, gas, steam and air conditioning Waste collection, treatment	79,2	-9,2	-25,6	-0,43	111,9	6,4	23,8
38 and disposal services	89,2	-36,5	-28,3	-0,36	110,7	9,0	0,4

*Effect of change

** Moving 12-month averages

Table 12. Unit value index, exports 2020=100

Products by Activity (CPA2015)	May 2022:05	Change	Change	Effect*	Mean** 2021:06- 2022:05	Change	Weights 2021
		2022:05/ 2022:04	2022:05/ 2021:05	% pp		2021:06-2022:05/ 2020:06-2021:05	
Total exports	146,1	3,5	32,7	32,70	126,1	23,1	1000,0
01 Products of agriculture and hunting	136,6	13,3	13,2	0,09	120,8	13,1	7,5
10 Food products	127,1	5,8	23,5	0,43	111,5	11,6	19,0
11 Beverages	111,2	1,7	11,5	0,02	103,9	5,2	2,7
13 Textiles	111,6	1,6	9,0	0,04	106,8	6,6	5,0
14 Wearing apparel	114,8	-0,5	8,2	0,02	106,0	5,1	3,5
15 Leather and related products	111,5	-1,0	2,3	0,00	109,0	5,2	2,3
16 Wood and wood products	180,3	6,4	40,2	2,06	161,9	52,1	54,6
171 Pulp, paper and paperboard	142,7	3,9	28,8	3,53	124,0	23,8	130,8
172 Articles of paper and paperboard	125,4	2,0	20,9	0,07	113,8	13,9	3,9
19 Coke and refined petroleum products	264,4	8,1	97,1	6,48	178,9	65,5	54,7
20 Chemicals and chemical products	163,7	2,8	50,4	3,98	134,6	31,5	88,8
21 Basic pharmaceutical products and preparations	138,0	-4,3	38,9	0,53	126,8	23,4	16,3
22 Rubber and plastic products	124,0	1,6	16,6	0,36	114,3	13,0	24,2
23 Other non-metallic mineral products	116,0	4,7	14,8	0,10	106,1	5,9	8,3
241 Basic iron and steel and ferro-alloys	203,4	10,5	70,6	4,29	156,7	52,2	67,9
244 Basic precious and other non-ferrous metals	185,0	-1,8	47,5	3,35	147,4	32,1	66,4
25 Fabricated metal products	115,2	3,7	17,2	0,30	108,1	8,7	20,0
26 Computer, electronic and optical products	106,7	-0,6	4,4	0,20	105,2	6,0	53,5
27 Electrical equipment	98,9	0,4	-6,4	-0,36	100,9	-1,1	59,2
28 Machinery and equipment	110,9	2,4	10,3	1,21	106,4	5,2	129,3
29 Motor vehicles and trailers	104,5	2,1	5,3	0,26	101,8	3,4	57,5
38 Waste collection, treatment and disposal services	185,3	0,6	37,3	0,23	160,8	42,5	0,3
58 Publishing services	104,3	-15,0	4,2	0,00	108,7	7,5	0,5

*Effect of change

** Moving 12-month averages

Table 13. Unit value index, imports 2020=100

Products by Activity (CPA2015)	May 2022:05	Change	Change	Effect*	Mean** 2021:06- 2022:05	Change	Weights 2021
		% 2022:05/ 2022:04	% 2022:05/ 2021:05	pp 2022:05/ 2021:05		% 2021:06-2022:05/ 2020:06-2021:05	
Total imports	150,8	0,6	33,5	33,5	131,1	25,9	1000
01 Products of agriculture and hunting	127,3	-3,6	17	0,29	119,3	16,4	19,2
061 Crude petroleum	300,9	10,8	88,4	5,47	213,7	77,9	49,2
062 Natural gas	743,6	-15,2	376,1	4,33	504	352,4	14
07 Metal ores	158,9	-10,6	23,9	0,83	144,2	28,5	39,7
10 Food products	124,1	2,4	18,7	0,79	111	10	44
13 Textiles	119,5	3,3	17,7	0,17	109,5	10,3	9,4
14 Wearing apparel	108,5	1,7	8,1	0,12	104,6	4,8	15,8
15 Leather and related products	108,6	-0,3	5,1	0,02	106,4	4,5	5,7
16 Wood and wood products	147,5	4,7	30,8	0,3	130,3	28,2	10,7
19 Coke and refined petroleum products	280,7	1,5	86,9	3,69	200,3	77,6	39,7
20 Chemicals and chemical products	149,6	1,2	27,4	2,01	134,1	29,7	80,6
21 Basic pharmaceutical products and preparations	132,9	8,3	21,2	0,63	114,5	8,8	31,3
22 Rubber and plastic products	122,6	3,5	15,2	0,38	114,1	11,5	29,7
23 Other non-metallic mineral products	120,6	0,5	21	0,22	110,7	12	12,2
241 Basic iron and steel and ferro-alloys	217,5	12	84,2	1,47	166,9	59,1	21
244 Basic precious and other non-ferrous metals	186,6	1,7	22,8	0,93	163	36,3	37,5
25 Fabricated metal products	124,7	0,7	24,7	0,62	113,7	13,9	33,1
26 Computer, electronic and optical products	109,8	-2,4	13,5	0,93	104,6	7,4	86,2
27 Electrical equipment	109,1	0,4	9,8	0,45	105,4	5,9	57
28 Machinery and equipment	108,8	-1,1	10,1	0,73	105,6	5,4	88,9
29 Motor vehicles and trailers	114,1	1,8	11	0,86	107,6	6,3	93,3
35 Electricity, gas, steam and air conditioning	461,1	64,2	194,3	3,81	311,6	145,3	23,8
38 Waste collection, treatment and disposal services	134,8	-19,7	1,6	0,01	157,9	40,4	0,4

*Effect of change

** Moving 12-month averages

Monthly statistics on the international trade in goods, May 2022
2022:K05EN, 29.7.2022

Inquiries:

Kaarna, Anssi

tel. +358 40 332 8153

Riikonen, Johanna

tel. +358 40 332 1824

E-mail: forename.surname@tulli.fi

The preliminary statistics and monthly statistics on the international trade for June 2022 will be published on the following dates:

Preliminary statistics 2022:E06 5.8.2022

Monthly statistics 2022:K06 31.8.2022

More specific data on countries and goods, as well as statistics on logistics, are available free of charge via the the Uljas statistical database (ULJAS) uljas.tulli.fi

ISSN 1796-0479 = Official Statistics of Finland (pdf)

ISSN 2342-2335 = Monthly statistics on the international trade in goods (online)

Contact information:

Finnish Customs
Statistics

Opastinsilta 12
PO Box 512
FI-00101 Helsinki

Exchange + 358 295 5200
Statistics service + 358 295 52335
statistics@tulli.fi