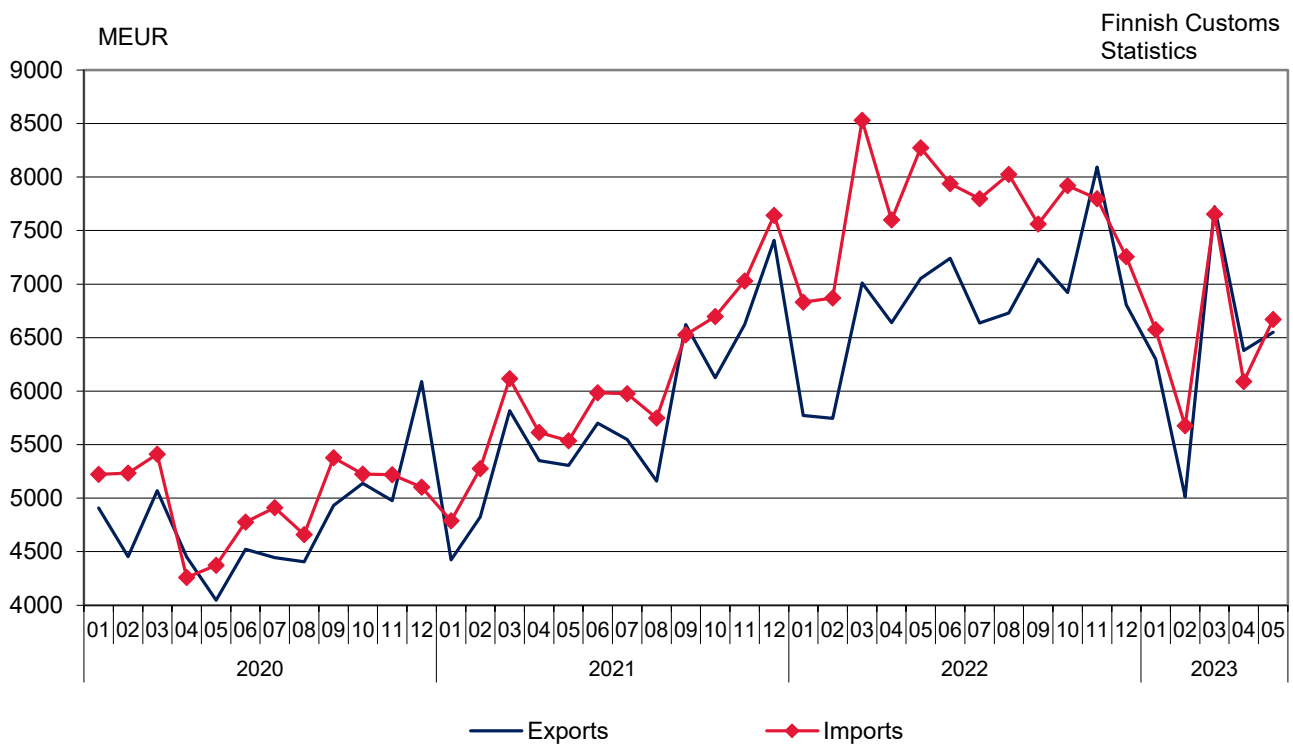


# Monthly statistics on the international trade in goods

## May 2023

Figure 1. Exports and imports of Finland 2020– 2023



Helsinki 27.7.2023. Free for publication at 9.00 a.m.

Quoting is encouraged provided Finnish Customs is acknowledged as the source.

## Volume of exports increased, volume of imports decreased in May

The value of Finnish exports of goods decreased by 7.1 per cent year-on-year in May, according to the international trade in goods statistics provided by Finnish Customs. The value of Finnish exports was EUR 6.5 billion. Export volume increased by 3.0 per cent, and export prices declined by 8.2 per cent year-on-year. The value of imports decreased by 19.4 per cent in May to EUR 6.7 billion. Import prices declined by 10.8 per cent, and import volume decreased by 8.3 per cent compared to May 2022. In January-May, the total value of exports decreased by 0.8 percent and the value of imports by 14.3 percent compared to the corresponding period of the previous year. Change of export volume during the latest 12 months was -4.2 per cent (12 month moving average June 2022 – May 2023). The corresponding figure for import volume was -5.8 per cent.

In May 2023, the trade balance showed a deficit of EUR 121 million. In January-May 2023, the trade balance had accumulated a deficit of 706 million euros, which was 5.2 billion euros less than a year earlier. The aggregate trade surplus by commodity group for products of chemical forest industry, industrial machinery and equipment and metals increased compared to the previous year. The trade surplus in products of mechanical forest industry decreased. The deficit increased for food products and beverages and transport equipment, but decreased for ores and metal scrap, crude oil and refined petroleum products and electrical machinery and equipment.

The terms of trade improved in May compared to the corresponding month of 2022 as import prices declined more rapidly than export prices. The point figure in May was 99.7, while it was 96.9 in May 2022. The terms of trade declined from April 2023.

### Export value of consumer goods increased in May

The value of exports of capital goods increased by 24.0 per cent in May, and the value of exports of industrial supplies decreased by 14.7 per cent year-on-year. The value of exports of fuels and lubricants decreased by 41.6 percent. The value of exports of consumer goods increased by 12.5 percent, and the value of exports of food and beverages decreased by 6.7 percent. The value of exports of transport equipment and parts decreased by 19.5 per cent.

The value of imports of industrial supplies decreased by 26.0 per cent in May, and the value of imports of capital goods by 2.8 per cent year-on-year. The value of imports of transportation equipment and their parts decreased by 9.5 percent. The value of imports of fuels and lubricants decreased by 43.5 percent. The value of imports of food and beverages decreased by 2.0 percent and the value of imports of consumer goods decreased by 7.7 percent.

### Export value in both internal and external trade fell in May

The value of exports to EU countries decreased by 7.4 percent and exports outside the EU by 6.8 percent in May. Imports from EU countries fell by 14.1 percent and imports from outside the EU by 25.7 percent in May. In January-May, total exports to EU countries rose by 0.4 percent, but exports to outside the EU decreased by 2.5 percent. In the same period, imports from EU countries decreased by 7.1 percent and from outside the EU by 22.8 percent.

**Table 1. Total development (e million)**

	May		Change %	January-May		Change %
	2022	2023		2022	2023	
Exports (fob)	7 053	6 549	-7,1	32 221	31 964	-0,8
Imports (cif)	8 272	6 671	-19,4	38 106	32 670	-14,3
Trade balance	-1 219	-121		-5 885	-706	

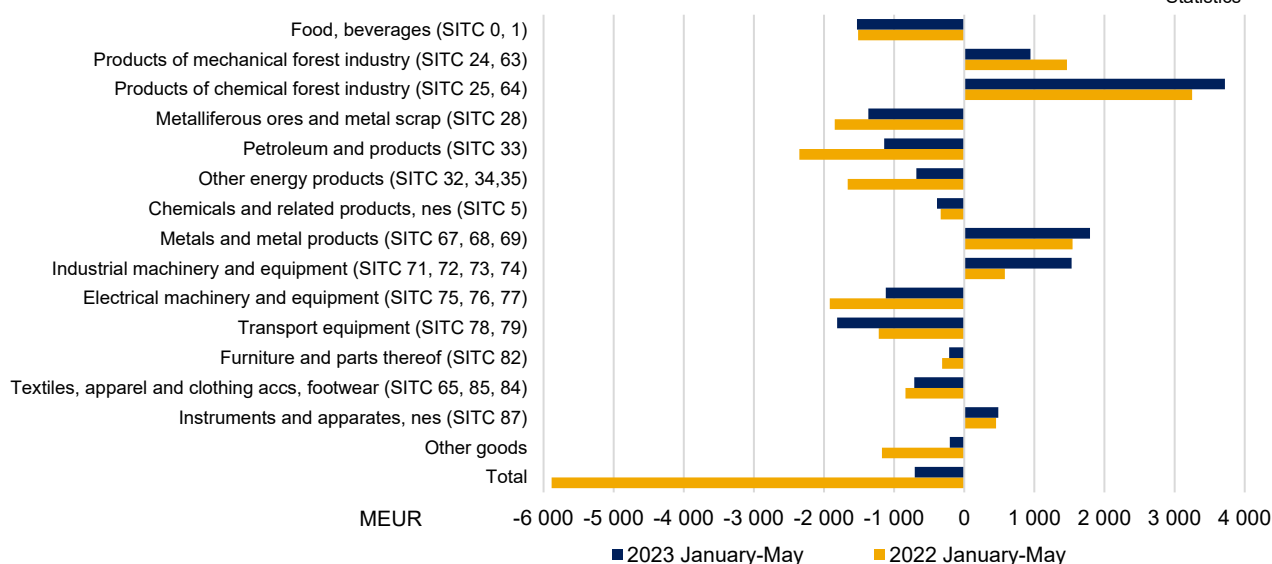
**Table 2. International trade indexes**

2020=100	May		Change %		Average *	Change %
	2022:05	2023:05	2023:05/ 2023:04	2023:05/ 2022:05		
<b>Volume index</b>						
Exports	99,1	102,1	6,5	3,0	99,1	-4,2
Imports	108,3	99,2	13,5	-8,3	99,4	-5,8
<b>Unit value index</b>						
Exports	146,1	134,2	-3,6	-8,2	142,3	12,8
Imports	150,8	134,6	-2,9	-10,8	145,1	10,6

\* Moving 12-month averages

**Figure 2. Trade balance (EUR million) in combined SITC commodity groups in January-May 2022 and 2023**

Finnish  
Customs  
Statistics



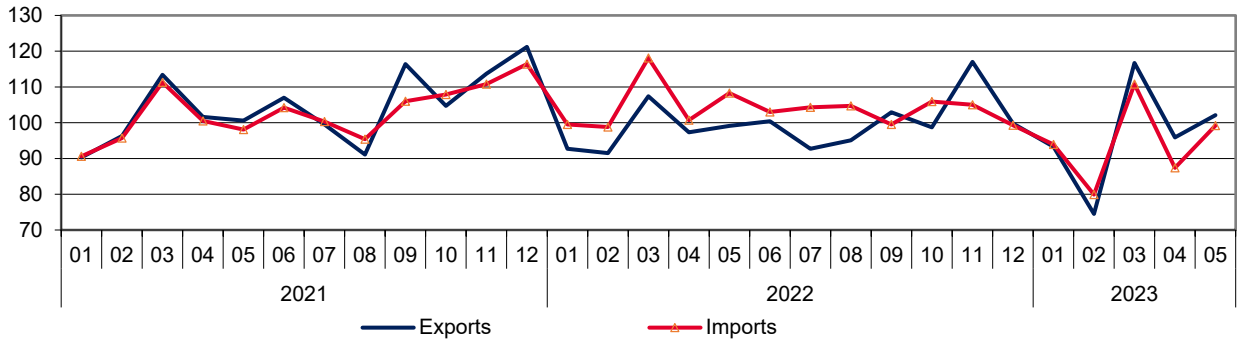
**Table 3. Trade balance (EUR million) in combined SITC commodity groups in January-May 2022 and 2023**

	Trade balance 2022 (01-05)	Trade balance 2023 (01-05)	Share of exports % 2023 (01-05)*	Share of imports % 2023 (01-05)*
Food, beverages (SITC 0, 1)	-1 514	-1 531	2,7	7,3
Products of mechanical forest industry (SITC 24, 63)	1 464	945	4,2	1,2
Products of chemical forest industry (SITC 25, 64)	3 250	3 718	12,7	1,1
Metalliferous ores and metal scrap (SITC 28)	-1 847	-1 368	3,1	7,2
Petroleum and products (SITC 33)	-2 351	-1 143	7,9	11,3
Other energy products (SITC 32, 34,35)	-1 663	-683	1,0	3,1
Chemicals and related products, nes (SITC 5)	-337	-388	10,6	11,5
Metals and metal products (SITC 67, 68, 69)	1 545	1 794	14,1	8,3
Industrial machinery and equipment (SITC 71, 72, 73, 74)	579	1 532	16,7	11,7
Electrical machinery and equipment (SITC 75, 76, 77)	-1 918	-1 118	9,1	12,3
Transport equipment (SITC 78, 79)	-1 219	-1 814	4,9	10,4
Furniture and parts thereof (SITC 82)	-315	-216	0,3	1,0
Textiles, apparel and clothing accs, footwear (SITC 65, 85, 84)	-838	-713	1,0	3,1
Instruments and apparatuses, nes (SITC 87)	454	486	3,6	2,1
Other goods	-1 175	-207	8,0	8,4
<b>Total</b>	<b>-5 885</b>	<b>-706</b>	<b>100,0</b>	<b>100,0</b>

\* Share of total imports / exports

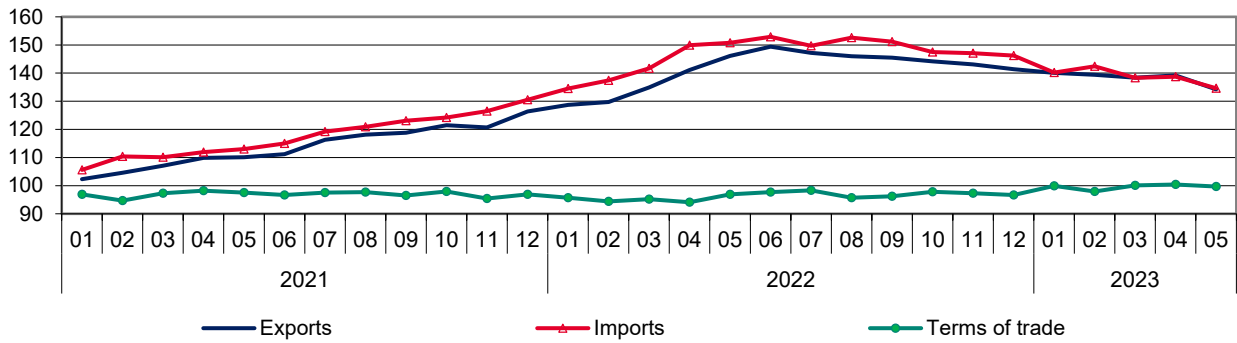
**Figure 3. Volume index 2021–2023**  
2020 = 100

Finnish Customs  
Statistics

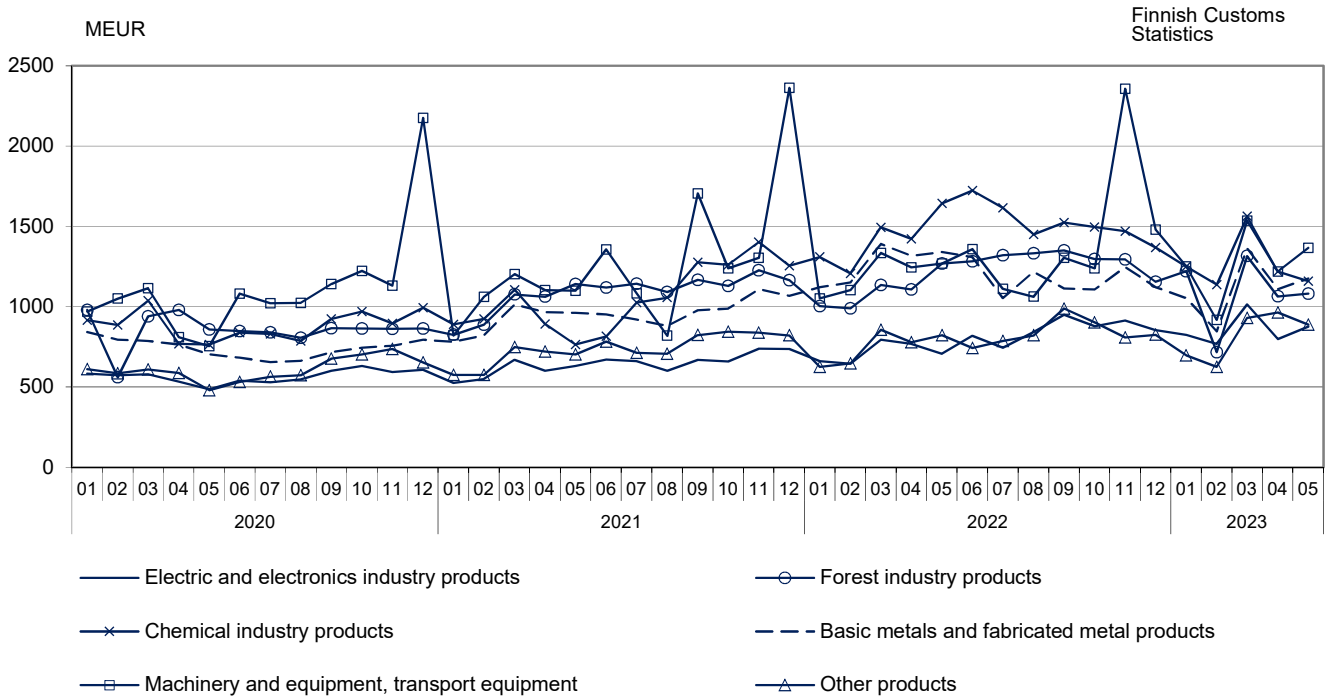


**Figure 4. Unit value index and Terms of trade 2021–2023**  
2020 = 100

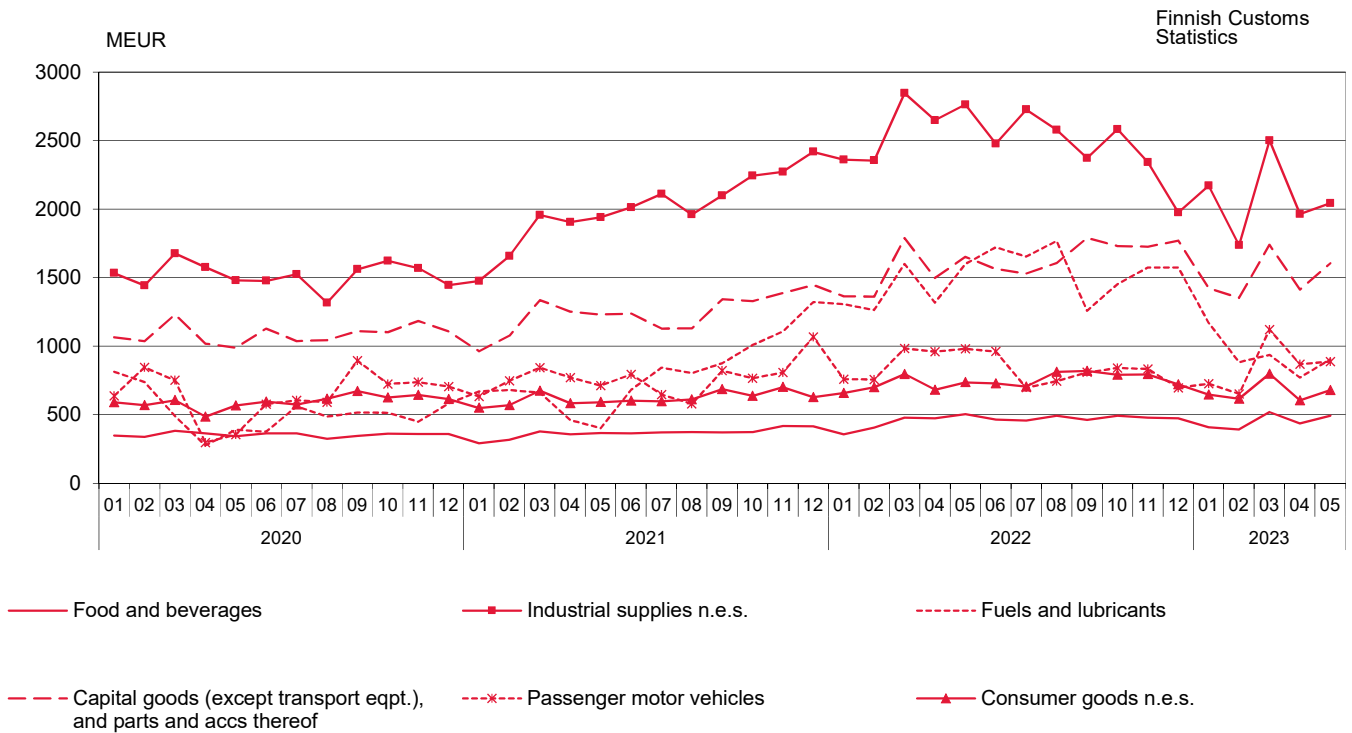
Finnish Customs  
Statistics



**Figure 5. Exports by Products by Activity (CPA) 2020 – 2023**

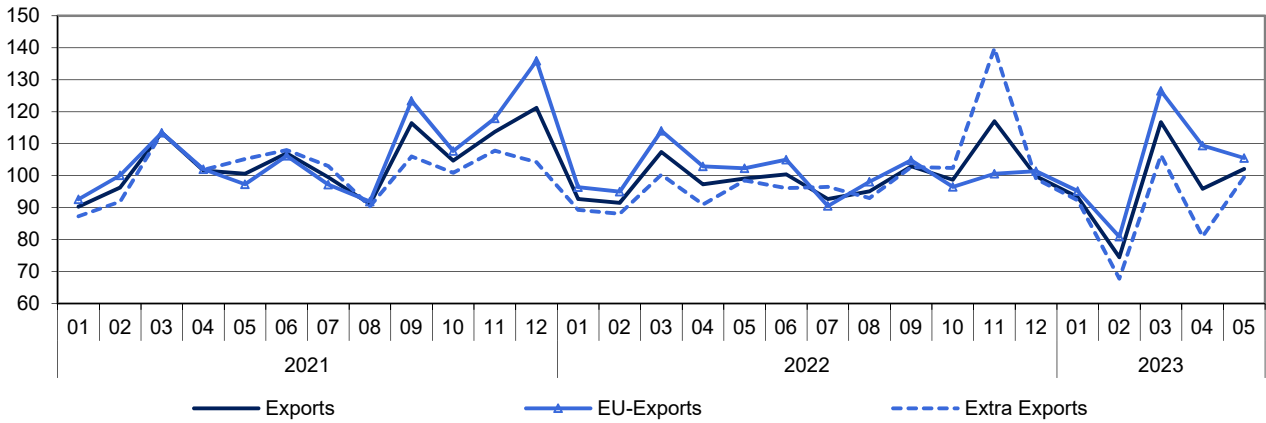


**Figure 6. Imports by broad economic categories (BEC) 2020 – 2023**



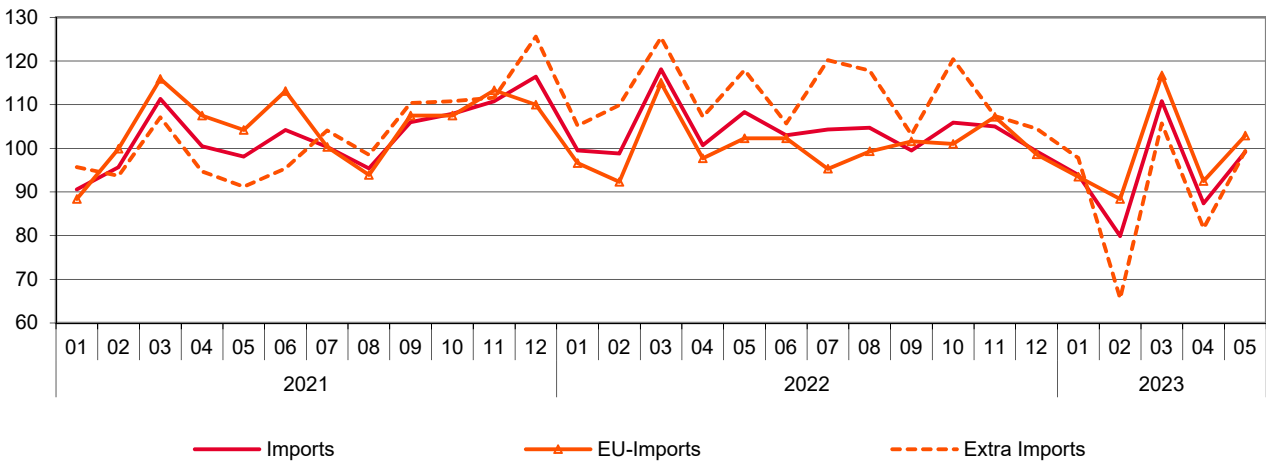
**Figure 7. Volume index of Exports by months 2021–2023**  
2020 = 100

Finnish Customs  
Statistics



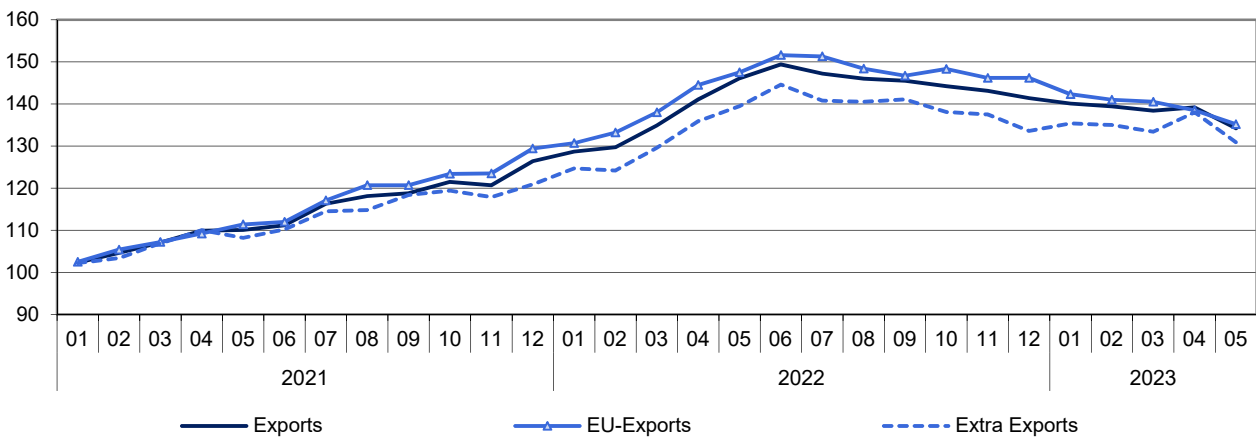
**Figure 8. Volume index of Imports by months 2021–2023**  
2020 = 100

Finnish Customs  
Statistics

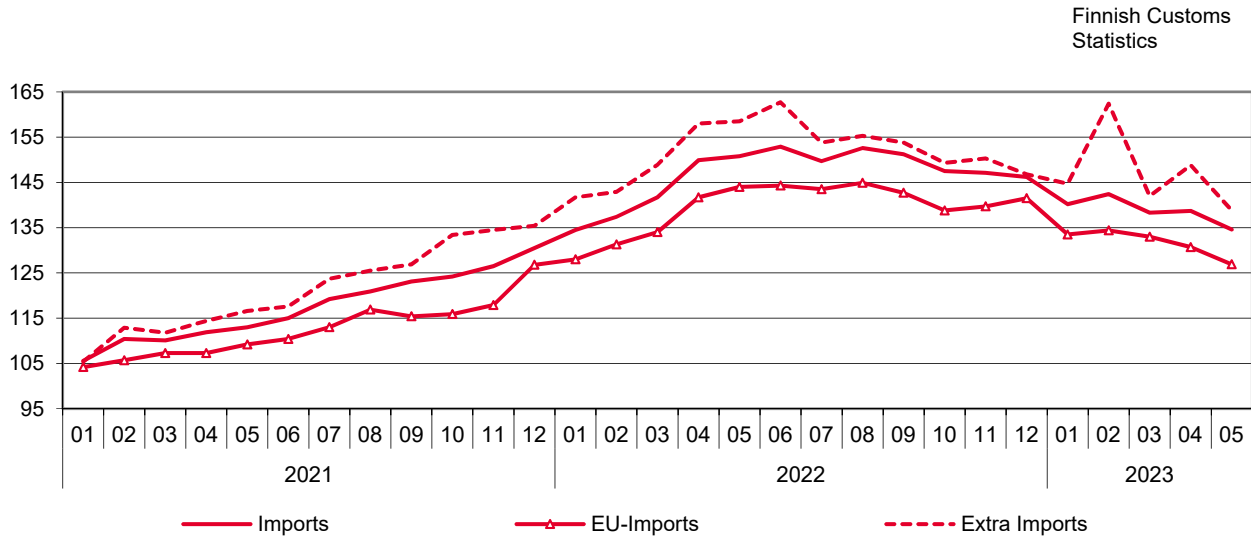


**Figure 9. Unit value index of Exports by months 2021–2023**  
2020 = 100

Finnish Customs  
Statistics



**Figure 10. Unit value index of Imports by months 2021–2023**  
2020 = 100



**Table 4. International trade indexes**  
2020=100

	May		Change %		Average *	Change %
	2022:05	2023:05	2023:05/ 2023:04	2023:05/ 2022:05		
<b>Volume index</b>						
Exports	99,1	102,1	6,5	3,0	99,1	-4,2
EU-Exports	102,3	105,5	-3,6	3,2	101,2	-5,9
Extra Exports	98,5	99,6	22,9	1,0	98,0	-0,9
Imports	108,3	99,2	13,5	-8,3	99,4	-5,8
EU-Imports	102,3	102,9	11,2	0,6	99,9	-4,0
Extra Imports	117,9	99,4	21,7	-15,7	102,4	-7,0
<b>Unit value index</b>						
Exports	146,1	134,2	-3,6	-8,2	142,3	12,8
EU-Exports	147,5	135,2	-2,4	-8,4	144,7	12,7
Extra Exports	139,5	130,9	-5,2	-6,2	137,4	12,2
Imports	150,8	134,6	-2,9	-10,8	145,1	10,6
EU-Imports	144,0	126,9	-2,9	-11,8	137,8	10,6
Extra Imports	158,5	138,8	-6,7	-12,4	150,7	9,8
<b>Terms of Trade</b>	96,9	99,7	-0,7	2,9	98,1	2,0

\* Moving 12-month averages

**Table 5. Exports by SITC**

SITC Rev.4		May 2023			January-May 2023		
		value MEUR	share %	change %	value MEUR	share %	change %
	<b>Total exports</b>	<b>6 549</b>	<b>100,0</b>	<b>-7,1</b>	<b>31 964</b>	<b>100,0</b>	<b>-0,8</b>
<b>0</b>	<b>Food and live animals</b>	<b>162</b>	<b>2,5</b>	<b>-10,4</b>	<b>754</b>	<b>2,4</b>	<b>-3,8</b>
02	Dairy products and birds' eggs	47	0,7	-9,3	224	0,7	-0,8
05	Vegetables and fruit	6	0,1	-19,7	30	0,1	-26,4
<b>1</b>	<b>Beverages and tobacco</b>	<b>25</b>	<b>0,4</b>	<b>11,9</b>	<b>97</b>	<b>0,3</b>	<b>22,3</b>
<b>2</b>	<b>Crude materials, inedible, except fuels</b>	<b>762</b>	<b>11,6</b>	<b>-9,3</b>	<b>3 452</b>	<b>10,8</b>	<b>-7,8</b>
212	Furskins, raw	3	0,1	-27,3	126	0,4	198,1
24	Cork and wood	203	3,1	-35,6	929	2,9	-30,7
248	Wood, simply worked	189	2,9	-37,0	861	2,7	-32,7
25	Pulp and waste paper	227	3,5	13,2	1 306	4,1	36,9
28	Metalliferous ores and metal scrap	308	4,7	6,3	987	3,1	-23,5
<b>3</b>	<b>Mineral fuels etc</b>	<b>466</b>	<b>7,1</b>	<b>-41,3</b>	<b>2 853</b>	<b>8,9</b>	<b>-9,0</b>
33	Petroleum and products	409	6,2	-42,5	2 538	7,9	-6,8
<b>4</b>	<b>Animal, vegetable oil, fat</b>	<b>2</b>	<b>0,0</b>	<b>0,1</b>	<b>10</b>	<b>0,0</b>	<b>-12,2</b>
<b>5</b>	<b>Chemicals and related products, nes</b>	<b>660</b>	<b>10,1</b>	<b>-19,7</b>	<b>3 383</b>	<b>10,6</b>	<b>-13,0</b>
51+52	Organic and inorganic chemicals	183	2,8	-32,2	912	2,9	-24,4
54	Medicinal, pharm. products	141	2,2	40,1	746	2,3	82,4
57+58	Plastics in primary and non-primary forms	178	2,7	-26,2	894	2,8	-19,6
<b>6</b>	<b>Basic manufactures</b>	<b>1 743</b>	<b>26,6</b>	<b>-13,5</b>	<b>8 334</b>	<b>26,1</b>	<b>-8,0</b>
63	Wood and cork manufactures	95	1,5	-19,6	423	1,3	-22,1
634	Plywood, particle board etc	75	1,1	3,6	325	1,0	-1,7
64	Paper, paperboard and articles thereof	559	8,5	-13,1	2 767	8,7	2,9
65	Textile yarn, fabrics, made up articles, etc	31	0,5	-4,4	149	0,5	-7,6
67	Iron and steel	549	8,4	-18,4	2 501	7,8	-14,7
68	Non-ferrous metals	266	4,1	-12,1	1 360	4,3	-14,9
69	Manufactures of metals, nes	132	2,0	4,6	631	2,0	2,3
<b>7</b>	<b>Machinery, transport equipmt</b>	<b>2 115</b>	<b>32,3</b>	<b>14,4</b>	<b>9 836</b>	<b>30,8</b>	<b>9,8</b>
71	Power generating machinery and equipment	238	3,6	42,1	1 073	3,4	15,7
72	Machinery for special industries	627	9,6	43,1	2 676	8,4	26,5
74	General industrial machinery, nes	306	4,7	4,1	1 462	4,6	9,2
75	Office machines and adp machines	34	0,5	14,0	178	0,6	7,3
76	Telecomm, sound recording equipment	63	1,0	-6,9	294	0,9	-16,4
77	Electric machinery, nes and parts	512	7,8	40,4	2 444	7,6	34,2
78	Road vehicles	259	4,0	-35,8	1 231	3,9	-35,3
79	Other transport equipment	46	0,7	-23,3	344	1,1	56,1
793	Ships and boats etc	38	0,6	-26,7	308	1,0	110,7
<b>8</b>	<b>Miscellaneous manufactured articles</b>	<b>406</b>	<b>6,2</b>	<b>-2,2</b>	<b>2 038</b>	<b>6,4</b>	<b>1,6</b>
82	Furniture and parts thereof	20	0,3	-17,9	111	0,3	-17,2
84	Articles of apparel and clothing accessories	19	0,3	0,9	112	0,4	-0,2
85	Footwear	10	0,2	-3,1	52	0,2	4,6
87	Instruments and apparatuses, nes	229	3,5	-1,9	1 163	3,6	5,9
<b>9</b>	<b>Goods not classified elsewhere</b>	<b>207</b>	<b>3,2</b>	<b>86,2</b>	<b>1 206</b>	<b>3,8</b>	<b>118,0</b>



**Table 6. Imports by SITC**

SITC Rev.4		May 2023			January-May 2023		
		value MEUR	share %	change %	value MEUR	share %	change %
	<b>Total imports</b>	<b>6 671</b>	<b>100,0</b>	<b>-19,4</b>	<b>32 670</b>	<b>100,0</b>	<b>-14,3</b>
<b>0</b>	<b>Food and live animals</b>	<b>458</b>	<b>6,9</b>	<b>-5,6</b>	<b>2 112</b>	<b>6,5</b>	<b>-0,3</b>
02	Dairy products and birds' eggs	50	0,7	15,8	221	0,7	23,2
05	Vegetables and fruit	111	1,7	6,0	507	1,6	5,4
<b>1</b>	<b>Beverages and tobacco</b>	<b>75</b>	<b>1,1</b>	<b>11,1</b>	<b>270</b>	<b>0,8</b>	<b>4,9</b>
<b>2</b>	<b>Crude materials, inedible, except fuels</b>	<b>513</b>	<b>7,7</b>	<b>-28,8</b>	<b>3 146</b>	<b>9,6</b>	<b>-20,3</b>
212	Furskins, raw	12	0,2	119,6	129	0,4	6,9
24	Cork and wood	45	0,7	21,7	253	0,8	12,6
248	Wood, simply worked	6	0,1	-63,7	28	0,1	-70,8
25	Pulp and waste paper	8	0,1	-54,1	70	0,2	-14,3
28	Metalliferous ores and metal scrap	372	5,6	-33,9	2 355	7,2	-24,9
<b>3</b>	<b>Mineral fuels etc</b>	<b>906</b>	<b>13,6</b>	<b>-44,7</b>	<b>4 679</b>	<b>14,3</b>	<b>-34,6</b>
33	Petroleum and products	783	11,7	-32,5	3 681	11,3	-27,5
<b>4</b>	<b>Animal, vegetable oil, fat</b>	<b>48</b>	<b>0,7</b>	<b>-16,5</b>	<b>256</b>	<b>0,8</b>	<b>-13,5</b>
<b>5</b>	<b>Chemicals and related products, nes</b>	<b>765</b>	<b>11,5</b>	<b>-12,5</b>	<b>3 771</b>	<b>11,5</b>	<b>-10,7</b>
51+52	Organic and inorganic chemicals	171	2,6	-34,4	1 021	3,1	-14,8
54	Medicinal, pharm. products	205	3,1	8,0	965	3,0	-4,4
57+58	Plastics in primary and non-primary forms	164	2,5	-20,6	764	2,3	-16,4
<b>6</b>	<b>Basic manufactures</b>	<b>896</b>	<b>13,4</b>	<b>-26,8</b>	<b>4 112</b>	<b>12,6</b>	<b>-21,9</b>
63	Wood and cork manufactures	35	0,5	-26,1	155	0,5	-20,7
634	Plywood, particle board etc	14	0,2	-42,6	70	0,2	-31,1
64	Paper, paperboard and articles thereof	59	0,9	-10,6	285	0,9	-8,7
65	Textile yarn, fabrics, made up articles, etc	59	0,9	-26,0	284	0,9	-22,8
67	Iron and steel	209	3,1	-39,4	986	3,0	-29,7
68	Non-ferrous metals	106	1,6	-55,4	548	1,7	-44,0
69	Manufactures of metals, nes	284	4,3	3,7	1 165	3,6	-4,8
<b>7</b>	<b>Machinery, transport equipmt</b>	<b>2 375</b>	<b>35,6</b>	<b>-5,7</b>	<b>11 236</b>	<b>34,4</b>	<b>-2,4</b>
71	Power generating machinery and equipment	216	3,2	-24,1	949	2,9	-14,2
72	Machinery for special industries	221	3,3	7,9	1 018	3,1	3,7
74	General industrl machy, nes	364	5,5	-5,2	1 725	5,3	0,5
75	Office machines and adp machines	112	1,7	-14,1	587	1,8	-24,5
76	Telecomm, sound recording equipment	195	2,9	1,0	877	2,7	-5,7
77	Electric machinery, nes and parts	515	7,7	-2,1	2 570	7,9	0,8
78	Road vehicles	698	10,5	5,1	3 161	9,7	6,2
79	Other transport equipment	30	0,4	-71,3	227	0,7	-37,6
793	Ships and boats etc	8	0,1	-90,5	55	0,2	-72,3
<b>8</b>	<b>Miscellaneous manufactured articles</b>	<b>588</b>	<b>8,8</b>	<b>-10,0</b>	<b>2 913</b>	<b>8,9</b>	<b>-8,1</b>
82	Furniture and parts thereof	67	1,0	-25,7	327	1,0	-27,2
84	Articles of apparel and clothing accessories	105	1,6	-18,2	586	1,8	-8,1
85	Footwear	26	0,4	-23,1	156	0,5	-0,1
87	Instruments and apparatuses, nes	145	2,2	11,9	677	2,1	5,1
<b>9</b>	<b>Goods not classified elsewhere</b>	<b>47</b>	<b>0,7</b>	<b>32,1</b>	<b>176</b>	<b>0,5</b>	<b>4,3</b>

**Table 7. Exports and imports by Products by Activity (CPA2015)**

Products by Activity	Exports 2023				Imports 2023			
	May	January-May			May	January-May		
	value MEUR	value MEUR	share %	change %	value MEUR	value MEUR	share %	change %
<b>Total exports / imports</b>	<b>6 549</b>	<b>31 964</b>	<b>100,0</b>	<b>-0,8</b>	<b>6 671</b>	<b>32 670</b>	<b>100</b>	<b>-14,3</b>
<b>A Products of agriculture, forestry and fishing</b>	<b>49</b>	<b>331</b>	<b>1,0</b>	<b>17,8</b>	<b>180</b>	<b>912</b>	<b>2,8</b>	<b>-9,4</b>
<b>B Products from mining and quarrying</b>	<b>207</b>	<b>478</b>	<b>1,5</b>	<b>-18,0</b>	<b>855</b>	<b>4 285</b>	<b>13,1</b>	<b>-22,2</b>
061 Crude petroleum	-	0	0,0	-95,0	542	2 461	7,5	-20,3
<b>C Manufactured goods</b>	<b>6 096</b>	<b>29 896</b>	<b>93,5</b>	<b>-2,3</b>	<b>5 419</b>	<b>26 206</b>	<b>80,2</b>	<b>-11,0</b>
<b>10-12 Food, beverages and tobacco</b>	<b>162</b>	<b>749</b>	<b>2,3</b>	<b>4,4</b>	<b>441</b>	<b>1 973</b>	<b>6</b>	<b>8,0</b>
<b>13-15 Textiles, clothes, leather and leather products</b>	<b>65</b>	<b>335</b>	<b>1,0</b>	<b>-2,0</b>	<b>194</b>	<b>1 040</b>	<b>3,2</b>	<b>-9,6</b>
<b>16-18 Forest industry products</b>	<b>1 081</b>	<b>5 400</b>	<b>16,9</b>	<b>-2,0</b>	<b>125</b>	<b>659</b>	<b>2</b>	<b>-14,3</b>
16 Wood and wood products	296	1 330	4,2	-28,9	57	295	0,9	-20,8
17 Paper, paper and paperboard products, pulp	785	4 069	12,7	11,9	68	362	1,1	-8,3
<b>19-22 Chemical industry products</b>	<b>1 160</b>	<b>6 330</b>	<b>19,8</b>	<b>-10,5</b>	<b>1 193</b>	<b>5 966</b>	<b>18,3</b>	<b>-20,0</b>
19 Coke and petroleum products	361	2 267	7,1	-6,5	248	1 277	3,9	-39,4
20 Chemicals and chemical products	490	2 549	8,0	-24,9	541	2 781	8,5	-15,6
21 Pharmaceutical products and pharmaceutical preparations	149	783	2,5	73,0	212	996	3	-2,9
22 Rubber and plastic products	160	731	2,3	-9,4	192	912	2,8	-11,5
<b>23 Other non-metallic mineral products</b>	<b>60</b>	<b>278</b>	<b>0,9</b>	<b>-4,5</b>	<b>99</b>	<b>444</b>	<b>1,4</b>	<b>-8,4</b>
<b>24-25 Metal and metal products</b>	<b>1 176</b>	<b>5 549</b>	<b>17,4</b>	<b>-12,2</b>	<b>663</b>	<b>3 332</b>	<b>10,2</b>	<b>-27,1</b>
24 Basic metals	1 020	4 791	15,0	-14,4	366	2 119	6,5	-35,4
25 Fabricated metal products (excl. machinery and equipment)	155	758	2,4	4,5	297	1 212	3,7	-6,0
<b>26-27 Electric and electronics industry products</b>	<b>877</b>	<b>4 287</b>	<b>13,4</b>	<b>19,8</b>	<b>980</b>	<b>4 801</b>	<b>14,7</b>	<b>-2,9</b>
26 Computers, electronic and optical products	355	1 822	5,7	11,4	556	2 697	8,3	-4,3
263 Communication equipment	48	220	0,7	-20,2	148	642	2	-2,3
27 Electrical equipment	522	2 464	7,7	27,0	425	2 104	6,4	-1,0
<b>28 Machinery and equipment</b>	<b>1 070</b>	<b>4 706</b>	<b>14,7</b>	<b>20,1</b>	<b>764</b>	<b>3 444</b>	<b>10,5</b>	<b>1,6</b>
<b>29-30 Transport equipment</b>	<b>297</b>	<b>1 588</b>	<b>5,0</b>	<b>-23,9</b>	<b>770</b>	<b>3 628</b>	<b>11,1</b>	<b>-3,6</b>
29 Motor vehicles	220	1 099	3,4	-37,5	684	3 120	9,5	0,1
30 Other transport equipment	76	489	1,5	48,7	86	509	1,6	-21,5
<b>31-33 Other manufactured goods</b>	<b>149</b>	<b>674</b>	<b>2,1</b>	<b>-11,5</b>	<b>190</b>	<b>919</b>	<b>2,8</b>	<b>-16,1</b>
<b>D Electricity, gas, steam, air conditioning *</b>	<b>19</b>	<b>184</b>	<b>0,6</b>	<b>-29,8</b>	<b>15</b>	<b>341</b>	<b>1</b>	<b>-62,4</b>
<b>E-X Other products</b>	<b>178</b>	<b>1 075</b>	<b>3,4</b>	<b>117,8</b>	<b>201</b>	<b>926</b>	<b>2,8</b>	<b>-24,4</b>
E 381158 Metal waste	0	0	0,0	>999	0	0	0	-98,3

\* Natural gas B 062

**Table 8. Imports and exports by BEC goods classification (Broad Economic Categories)**

BEC Rev.4		May 2023			January-May 2023		
		value MEUR	share %	change %	value MEUR	share %	change %
<b>Total imports</b>		<b>6 671</b>	<b>100,0</b>	<b>-19,4</b>	<b>32 670</b>	<b>100,0</b>	<b>-14,3</b>
1	Food and beverages	495	7,4	-2,0	2 257	6,9	1,4
2	Industrial supplies not elsewhere specified	2 045	30,7	-26,0	10 421	31,9	-19,7
3	Fuels and lubricants	904	13,6	-43,5	4 668	14,3	-34,2
31	Primary	556	8,3	-39,0	2 863	8,8	-29,2
32	Processed	348	5,2	-49,5	1 805	5,5	-40,8
4	Capital goods (except transport equipment), and parts and accessories thereof	1 605	24,1	-2,8	7 537	23,1	-1,7
5	Transport equipment and parts and accessories thereof	889	13,3	-9,5	4 260	13,0	-4,1
6	Consumer goods not elsewhere specified	681	10,2	-7,7	3 350	10,3	-6,4
61	Durable	147	2,2	-15,5	692	2,1	-15,1
62	Semi-durable	228	3,4	-18,5	1 206	3,7	-12,4
63	Non-durable	305	4,6	7,6	1 452	4,4	4,8
7	Goods not elsewhere specified	51	0,8	72,1	177	0,5	44,7
<b>Total exports</b>		<b>6 549</b>	<b>100,0</b>	<b>-7,1</b>	<b>31 964</b>	<b>100,0</b>	<b>-0,8</b>
1	Food and beverages	174	2,6	-6,7	779	2,4	-2,0
2	Industrial supplies not elsewhere specified	3 185	48,6	-14,7	15 336	48,0	-10,1
3	Fuels and lubricants	432	6,6	-41,6	2 639	8,3	-9,3
31	Primary	38	0,6	43,7	110	0,3	-3,4
32	Processed	394	6,0	-44,7	2 528	7,9	-9,6
4	Capital goods (except transport equipment), and parts and accessories thereof	1 916	29,3	24,0	8 782	27,5	15,4
5	Transport equipment and parts and accessories thereof	471	7,2	-19,5	2 299	7,2	-13,1
6	Consumer goods not elsewhere specified	273	4,2	12,5	1 399	4,4	25,7
61	Durable	31	0,5	-4,8	153	0,5	-4,5
62	Semi-durable	85	1,3	-3,2	425	1,3	-4,7
63	Non-durable	158	2,4	28,3	821	2,6	62,0
7	Goods not elsewhere specified	99	1,5	424,7	731	2,3	787,0

**Table 9. Trade by regions and countries**

Origin/ destination	Imports 2023				Exports 2023				Trade 2023		
	May		January-May		May		January-May		May		January-May
	value	value	share	change	value	value	share	change	value	value	
	MEUR	MEUR	%	%	MEUR	MEUR	%	%	MEUR	MEUR	
<b>Total exports / imports</b>	<b>6 671</b>	<b>32 670</b>	<b>100,0</b>	<b>-14,3</b>	<b>6 549</b>	<b>31 964</b>	<b>100</b>	<b>-0,8</b>	<b>-121</b>	<b>-706</b>	
EU	3 871	19 222	58,8	-7,1	3 717	18 827	58,9	0,4	-154	-395	
Euro zone *	2 597	12 519	38,3	-7,3	2 541	12 576	39,3	-2,7	-56	57	
External trade	2 799	13 448	41,2	-22,8	2 832	13 137	41,1	-2,5	33	-311	
Developing countries	1 259	6 113	18,7	-9,0	1 047	5 296	16,6	10,2	-212	-817	
<b>Europe</b>	<b>4 826</b>	<b>24 013</b>	<b>73,5</b>	<b>-18,3</b>	<b>4 504</b>	<b>22 411</b>	<b>70,1</b>	<b>-3,3</b>	<b>-322</b>	<b>-1 602</b>	
<b>EU</b>	<b>3 871</b>	<b>19 222</b>	<b>58,8</b>	<b>-7,1</b>	<b>3 717</b>	<b>18 827</b>	<b>58,9</b>	<b>0,4</b>	<b>-154</b>	<b>-395</b>	
AT Austria	73	338	1,0	-4,7	44	232	0,7	-1,2	-29	-106	
BE Belgium	160	705	2,2	-5,7	175	1 031	3,2	-11,4	15	325	
BG Bulgaria	10	50	0,2	10,9	8	52	0,2	35,6	-3	2	
CY Cyprus	2	7	0,0	35,3	2	8	0	-44,2	-1	2	
CZ Czech Republic	108	479	1,5	2,2	39	231	0,7	0,5	-69	-248	
DE Germany	1 019	4 732	14,5	-7,1	670	3 500	11	-13,9	-350	-1 232	
DK Denmark	170	788	2,4	-3,7	96	525	1,6	-12,3	-74	-263	
EE Estonia	214	1 305	4,0	1,5	261	1 179	3,7	-10,5	47	-126	
ES Spain	129	642	2,0	-8,9	111	503	1,6	9,3	-18	-139	
FR France	202	871	2,7	6,3	230	1 136	3,6	8,4	28	265	
GR Greece	11	65	0,2	-24,3	16	97	0,3	11,2	5	33	
HU Hungary	38	200	0,6	1,5	21	109	0,3	3,0	-17	-92	
HR Croatia	3	27	0,1	35,1	6	25	0,1	-2,7	3	-2	
IE Ireland	52	238	0,7	-3,1	21	100	0,3	3,3	-31	-138	
IT Italy	203	977	3,0	1,0	193	974	3	-7,6	-10	-3	
LT Lithuania	67	304	0,9	-2,8	75	355	1,1	0,7	8	51	
LU Luxembourg	8	40	0,1	-27,0	8	36	0,1	129,2	0	-4	
LV Latvia	45	223	0,7	41,4	70	345	1,1	8,2	25	122	
MT Malta	1	4	0,0	19,7	1	4	0	50,8	-1	1	
NL Netherlands	349	1 672	5,1	-24,7	619	2 843	8,9	14,3	270	1 172	
PL Poland	248	1 256	3,8	2,7	224	1 064	3,3	6,8	-24	-192	
PT Portugal	21	197	0,6	-13,4	22	115	0,4	25,4	2	-82	
RO Romania	20	112	0,3	-17,6	23	137	0,4	33,3	3	25	
SE Sweden	677	3 791	11,6	-11,5	660	3 403	10,6	-6,6	-17	-388	
SI Slovenia - Slovenien - Slovenia	11	60	0,2	-16,8	9	47	0,1	31,8	-2	-13	
SK Slovakia	26	139	0,4	-1,6	14	71	0,2	-16,5	-12	-69	
<b>Rest of Europe</b>	<b>955</b>	<b>4 791</b>	<b>14,7</b>	<b>-44,8</b>	<b>787</b>	<b>3 583</b>	<b>11,2</b>	<b>-18,9</b>	<b>-168</b>	<b>-1 207</b>	
CH Switzerland	59	297	0,9	-17,1	126	590	1,8	-0,2	67	293	
GB United Kingdom	205	889	2,7	-3,1	227	1 000	3,1	-15,1	22	111	
XI Northern Ireland	1	4	0,0	-8,3	3	22	0,1	-2,3	2	18	
IS Iceland	2	11	0,0	49,4	5	28	0,1	-22,8	3	17	
NO Norway	491	2 347	7,2	-9,8	179	910	2,8	1,8	-312	-1 436	
RU Russia	44	629	1,9	-84,9	77	300	0,9	-73,6	33	-329	
TR Türkiye	109	453	1,4	17,4	125	552	1,7	39,5	15	100	
UA Ukraine	11	33	0,1	-24,2	17	70	0,2	38,4	7	38	
<b>North Africa</b>	<b>8</b>	<b>111</b>	<b>0,3</b>	<b>133,5</b>	<b>63</b>	<b>276</b>	<b>0,9</b>	<b>-9,8</b>	<b>55</b>	<b>165</b>	
EG Egypt	4	28	0,1	29,1	28	139	0,4	-23,0	24	111	
MA Morocco	2	29	0,1	40,1	12	46	0,1	-21,2	9	17	
<b>Rest of Africa</b>	<b>51</b>	<b>224</b>	<b>0,7</b>	<b>-40,6</b>	<b>73</b>	<b>386</b>	<b>1,2</b>	<b>8,3</b>	<b>22</b>	<b>163</b>	
ZA South Africa	29	110	0,3	18,3	39	190	0,6	-1,3	10	79	
<b>Middle East</b>	<b>18</b>	<b>123</b>	<b>0,4</b>	<b>4,0</b>	<b>96</b>	<b>511</b>	<b>1,6</b>	<b>40,9</b>	<b>78</b>	<b>387</b>	
AE Arab Emirates	1	6	0,0	-49,6	15	184	0,6	160,4	14	178	
IL Israel	9	49	0,2	42,9	21	88	0,3	-1,8	12	38	
SA Saudi Arabia	2	7	0,0	-53,3	39	139	0,4	14,4	37	132	
<b>Rest of Asia</b>	<b>1 092</b>	<b>5 234</b>	<b>16,0</b>	<b>-8,5</b>	<b>770</b>	<b>3 990</b>	<b>12,5</b>	<b>3,0</b>	<b>-322</b>	<b>-1 244</b>	
CN China	586	2 762	8,5	-16,9	289	1 614	5,1	3,1	-297	-1 148	
HK Hong Kong	3	39	0,1	1,5	8	44	0,1	3,2	5	4	
ID Indonesia	9	77	0,2	22,5	40	186	0,6	149,2	31	109	
IN India	59	257	0,8	7,2	103	436	1,4	74,0	43	179	
JP Japan	71	367	1,1	-3,9	94	496	1,6	-38,9	23	129	
KR South Korea	67	353	1,1	25,1	71	410	1,3	-5,3	4	56	
KZ Kazakhstan	1	4	0,0	-80,9	23	129	0,4	145,9	23	125	
MY Malaysia	38	170	0,5	-5,6	15	70	0,2	6,4	-23	-100	
PH Philippines	9	65	0,2	-24,5	11	43	0,1	-36,1	2	-22	
SG Singapore	46	128	0,4	-7,3	19	92	0,3	28,7	-27	-36	
TH Thailand	27	151	0,5	-25,9	19	117	0,4	38,7	-8	-35	
TW Taiwan	74	405	1,2	24,1	15	76	0,2	-27,2	-59	-330	
<b>North America</b>	<b>456</b>	<b>1 865</b>	<b>5,7</b>	<b>30,7</b>	<b>751</b>	<b>3 104</b>	<b>9,7</b>	<b>11,2</b>	<b>295</b>	<b>1 239</b>	
CA Canada	24	173	0,5	-27,9	216	546	1,7	72,2	192	373	
US USA	431	1 691	5,2	42,5	534	2 555	8	3,4	102	863	
<b>Middle America</b>	<b>62</b>	<b>275</b>	<b>0,8</b>	<b>20,3</b>	<b>59</b>	<b>247</b>	<b>0,8</b>	<b>-8,2</b>	<b>-3</b>	<b>-28</b>	
MX Mexico	36	134	0,4	7,1	46	185	0,6	-14,4	9	52	
<b>South America</b>	<b>136</b>	<b>636</b>	<b>1,9</b>	<b>-5,3</b>	<b>137</b>	<b>654</b>	<b>2</b>	<b>-10,5</b>	<b>2</b>	<b>18</b>	
AR Argentina	1	5	0,0	-32,0	4	26	0,1	-78,9	3	21	
BR Brazil	38	304	0,9	-19,5	83	361	1,1	15,0	45	57	
CL Chile	28	38	0,1	-3,1	22	109	0,3	10,6	-6	71	
CO Colombia	16	79	0,2	-10,4	9	57	0,2	-14,4	-8	-22	
<b>Oceania</b>	<b>22</b>	<b>189</b>	<b>0,6</b>	<b>34,1</b>	<b>95</b>	<b>386</b>	<b>1,2</b>	<b>6,8</b>	<b>73</b>	<b>196</b>	
AU Australia	18	138	0,4	122,4	86	339	1,1	5,1	67	201	

\* Croatia has been added in euro area country group from year 2023

**Table 10. Volume index, exports 2020=100**

Products by Activity (CPA2015)	May 2023:05	Change	Change	Effect*	Mean** 2022:06- 2023:05	Change	Weights 2022
		2023:05/ 2023:04	2023:05/ 2022:05	% pp		2022:06-2023:05/ 2021:06-2022:05	
Total exports	102,1	6,5	3,0	3,00	99,1	-4,2	1000,0
01 Products of agriculture and hunting	44,2	-70,2	-6,9	-0,03	104,5	8,0	5,4
10 Food products	95,0	18,4	-4,2	-0,08	92,0	-3,3	19,7
11 Beverages	159,8	19,3	5,3	0,02	135,0	5,3	3,0
13 Textiles	95,0	14,1	-10,0	-0,05	90,7	-11,8	4,5
14 Wearing apparel	67,6	1,5	19,5	0,03	97,8	7,3	4,3
15 Leather and related products	99,6	10,1	-9,5	-0,03	111,9	0,6	2,6
16 Wood and wood products	108,6	10,9	-5,2	-0,29	98,4	-9,9	48,9
171 Pulp, paper and paperboard	83,5	1,9	-5,6	-0,50	88,7	-6,5	124,3
172 Articles of paper and paperboard	101,2	4,9	-15,3	-0,07	105,1	-0,2	4,5
19 Coke and refined petroleum products	68,6	7,3	-17,1	-0,86	76,4	-4,2	82,0
20 Chemicals and chemical products	90,1	-2,1	-15,7	-1,42	97,1	-12,4	95,3
21 Basic pharmaceutical products and preparations	126,9	42,1	27,1	0,40	113,6	15,1	16,0
22 Rubber and plastic products	103,1	11,5	-15,0	-0,41	93,4	-16,3	23,3
23 Other non-metallic mineral products	112,1	7,8	-13,4	-0,14	107,2	-11,2	8,3
241 Basic iron and steel and ferro-alloys	109,3	3,5	2,3	0,13	93,9	-14,7	70,4
244 Basic precious and other non-ferrous metals	94,9	19,3	10,8	0,50	89,8	-1,1	74,2
25 Fabricated metal products	105,5	2,9	6,9	0,12	105,6	-0,2	19,7
26 Computer, electronic and optical products	115,6	-7,4	9,9	0,51	126,1	10,4	53,8
27 Electrical equipment	150,7	22,7	21,1	1,47	142,3	21,6	63,1
28 Machinery and equipment	126,0	25,9	26,2	3,08	109,3	6,2	123,9
29 Motor vehicles and trailers	66,9	-14,6	-45,9	-2,77	78,9	-33,6	44,7
38 Waste collection, treatment and disposal services	159,0	65,5	37,2	0,01	120,7	18,8	0,3
58 Publishing services	90,9	-54,2	-24,0	-0,02	124,2	19,7	0,6

\*Effect of change

\*\* Moving 12-month averages

**Table 11. Volume index, imports 2020=100**

Products by Activity (CPA2015)	May 2023:05	Change 2023:05/ 2023:04	Change 2023:05/ 2022:05	Effect* 2023:05/ 2022:05	Mean** 2022:06- 2023:05	Change 2022:06-2023:05/ 2021:06-2022:05	Weights 2022
Total imports	99,2	13,5	-8,3	-8,30	99,4	-5,8	1000,0
01 Products of agriculture and hunting	93,1	0,1	-14,2	-0,19	89,2	-13,4	17,7
061 Crude petroleum	107,4	37,7	13,6	0,57	85,9	0,1	74,8
07 Metal ores	92,0	-10,7	-36,2	-1,30	114,1	-2,2	33,9
10 Food products	88,2	11,9	-7,4	-0,21	86,9	-6,0	43,5
13 Textiles	62,3	15,0	-27,2	-0,15	66,6	-18,9	8,7
14 Wearing apparel	76,8	15,2	-4,0	-0,04	99,3	9,9	18,1
15 Leather and related products	95,9	19,7	-15,6	-0,08	111,8	10,2	6,5
16 Wood and wood products	62,3	4,3	-19,5	-0,10	62,4	-33,5	8,7
19 Coke and refined petroleum products	76,2	36,2	-30,7	-1,05	100,5	-0,8	58,6
20 Chemicals and chemical products	112,6	16,5	-5,0	-0,32	109,2	-2,5	84,8
21 Basic pharmaceutical products and preparations	105,5	17,7	28,8	0,46	96,3	-4,1	27,4
22 Rubber and plastic products	89,8	3,0	-19,7	-0,42	92,1	-15,2	26,2
23 Other non-metallic mineral products	97,2	24,9	-18,0	-0,18	99,1	-7,3	13,1
241 Basic iron and steel and ferro-alloys	102,4	2,8	-26,1	-0,62	90,3	-21,7	24,2
244 Basic precious and other non-ferrous metals	62,6	0,2	-34,0	-1,01	102,2	-3,8	45,3
25 Fabricated metal products	130,6	31,9	0,9	0,02	117,3	-6,7	34,0
26 Computer, electronic and optical products	103,6	6,9	-1,3	-0,08	107,8	-6,5	78,4
27 Electrical equipment	125,9	24,7	-3,7	-0,19	125,3	1,4	58,5
28 Machinery and equipment	136,1	24,1	-3,7	-0,31	122,4	3,1	89,5
29 Motor vehicles and trailers	115,3	3,9	-3,7	-0,26	101,2	-8,5	76,5
35 Electricity, gas, steam and air conditioning Waste collection, treatment	25,1	-24,8	-68,2	-0,97	73,9	-33,9	32,5
38 and disposal services	117,1	61,3	31,3	0,00	118,2	6,8	0,3

\*Effect of change

\*\* Moving 12-month averages

**Table 12. Unit value index, exports 2020=100**

Products by Activity (CPA2015)	May 2023:05	Change	Change	Effect*	Mean** 2022:06- 2023:05	Change	Weights 2022
		2023:05/ 2023:04	2023:05/ 2022:05	% pp		2022:06-2023:05/ 2021:06-2022:05	
Total exports	134,2	-3,6	-8,2	-8,20	142,3	12,8	1000,0
01 Products of agriculture and hunting	138,9	1,9	1,7	0,00	134,0	10,9	5,4
10 Food products	129,8	-0,8	2,1	0,02	133,4	19,6	19,7
11 Beverages	118,4	1,3	6,5	0,00	112,7	8,5	3,0
13 Textiles	117,2	-1,1	5,1	0,01	116,0	8,6	4,5
14 Wearing apparel	115,5	1,1	0,5	0,00	116,4	9,8	4,3
15 Leather and related products	120,8	-1,0	8,4	0,01	120,5	10,5	2,6
16 Wood and wood products	132,5	-0,1	-26,5	-1,18	142,6	-11,9	48,9
171 Pulp, paper and paperboard	142,6	-3,7	-0,1	-0,01	156,1	25,8	124,3
172 Articles of paper and paperboard	131,3	-0,6	4,7	0,01	135,5	19,1	4,5
19 Coke and refined petroleum products	180,3	-17,0	-31,8	-2,57	243,0	35,9	82,0
20 Chemicals and chemical products	134,7	1,0	-17,7	-1,24	146,7	9,0	95,3
21 Basic pharmaceutical products and preparations	150,4	-40,9	9,0	0,09	155,3	22,5	16,0
22 Rubber and plastic products	125,9	0,4	1,5	0,02	132,5	16,0	23,3
23 Other non-metallic mineral products	127,3	4,2	9,7	0,04	122,4	15,3	8,3
241 Basic iron and steel and ferro-alloys	165,0	-2,5	-18,9	-1,20	176,3	12,5	70,4
244 Basic precious and other non-ferrous metals	150,6	-6,9	-18,6	-1,09	164,0	11,2	74,2
25 Fabricated metal products	124,6	4,3	8,2	0,08	118,7	9,8	19,7
26 Computer, electronic and optical products	111,0	0,3	4,0	0,10	109,7	4,3	53,8
27 Electrical equipment	112,3	1,2	13,6	0,38	106,9	6,0	63,1
28 Machinery and equipment	119,4	-1,0	7,6	0,50	117,1	10,0	123,9
29 Motor vehicles and trailers	108,8	-1,5	4,1	0,10	104,8	2,9	44,7
38 Waste collection, treatment and disposal services	186,5	17,1	0,6	0,00	173,4	7,9	0,3
58 Publishing services	111,3	-1,4	6,8	0,00	118,7	9,2	0,6

\*Effect of change

\*\* Moving 12-month averages

**Table 13. Unit value index, imports 2020=100**

Products by Activity (CPA2015)	May 2023:05	Change	Change	Effect*	Mean** 2022:06- 2023:05	Change	Weights 2022
		% 2023:05/ 2023:04	% 2023:05/ 2022:05	pp 2023:05/ 2022:05		% 2022:06-2023:05/ 2021:06-2022:05	
Total imports	134,6	-2,9	-10,8	-10,8	145,1	10,6	1000
01 Products of agriculture and hunting	127,1	-1,5	-0,1	-0,01	128,7	7,8	17,7
061 Crude petroleum	203,3	-9,4	-32,4	-2,43	249,5	16,7	74,8
062 Natural gas	881,9	49	18,6	0,86	799,3	58,6	16,5
07 Metal ores	136,8	9,2	-13,9	-0,33	140,7	-2,4	33,9
10 Food products	143,2	0,6	15,4	0,33	135,9	22,4	43,5
13 Textiles	121,8	-1,3	1,9	0	123,5	12,7	8,7
14 Wearing apparel	110,6	-3,6	1,9	0,01	114,2	9,2	18,1
15 Leather and related products	109,9	-4,4	1,2	0	113,4	6,6	6,5
16 Wood and wood products	142,4	-0,8	-3,5	-0,03	150,5	15,5	8,7
19 Coke and refined petroleum products	202,3	-14,5	-27,9	-1,47	238,7	19,2	58,6
20 Chemicals and chemical products	120,6	-3,1	-19,3	-0,95	137,5	2,6	84,8
21 Basic pharmaceutical products and preparations	113,2	1,1	-14,8	-0,24	122,8	7,3	27,4
22 Rubber and plastic products	126,8	0,2	3,4	0,04	126,8	11,1	26,2
23 Other non-metallic mineral products	133,2	-1,4	10,4	0,06	129,1	16,6	13,1
241 Basic iron and steel and ferro-alloys	159,1	-3,5	-26,9	-0,55	182,7	9,5	24,2
244 Basic precious and other non-ferrous metals	147,3	-8,7	-21	-0,67	166,5	2,1	45,3
25 Fabricated metal products	130,6	2,6	4,7	0,07	128,9	13,4	34
26 Computer, electronic and optical products	112	-0,7	2	0,07	114,5	9,5	78,4
27 Electrical equipment	110,4	-6,4	1,2	0,02	115,5	9,5	58,5
28 Machinery and equipment	113,7	-3,2	4,5	0,17	114,6	8,5	89,5
29 Motor vehicles and trailers	118,4	0,4	3,8	0,14	115,6	7,5	76,5
35 Electricity, gas, steam and air conditioning	117,2	-47,1	-74,6	-3,71	471,8	51,4	32,5
38 Waste collection, treatment and disposal services	165,2	-14,4	22,6	0	176,4	11,7	0,3

\*Effect of change

\*\* Moving 12-month averages



Monthly statistics on the international trade in goods, May 2023  
2023:K05EN, 27.7.2023

Inquiries:

Kaarna, Anssi tel. +358 40 332 8153  
Penttilä, Olli-Pekka tel. +358 40 332 1862  
E-mail: forename.surname@tulli.fi

The preliminary statistics and monthly statistics on the international trade for June 2023 will be published on the following dates:

Preliminary statistics 2023:E06 8.8.2023  
Monthly statistics 2023:K06 29.8.2023

More specific data on countries and goods, as well as statistics on logistics, are available free of charge via the the Uljas statistical database (ULJAS) [uljas.tulli.fi](https://uljas.tulli.fi)

ISSN 1796-0479 = Official Statistics of Finland (pdf)

ISSN 2342-2335 = Monthly statistics on the international trade in goods (online)

Contact information:

Finnish Customs  
Statistics

Opastinsilta 12  
PO Box 512  
FI-00101 Helsinki

Exchange + 358 295 5200  
Statistics service + 358 295 52335  
[statistics@tulli.fi](mailto:statistics@tulli.fi)