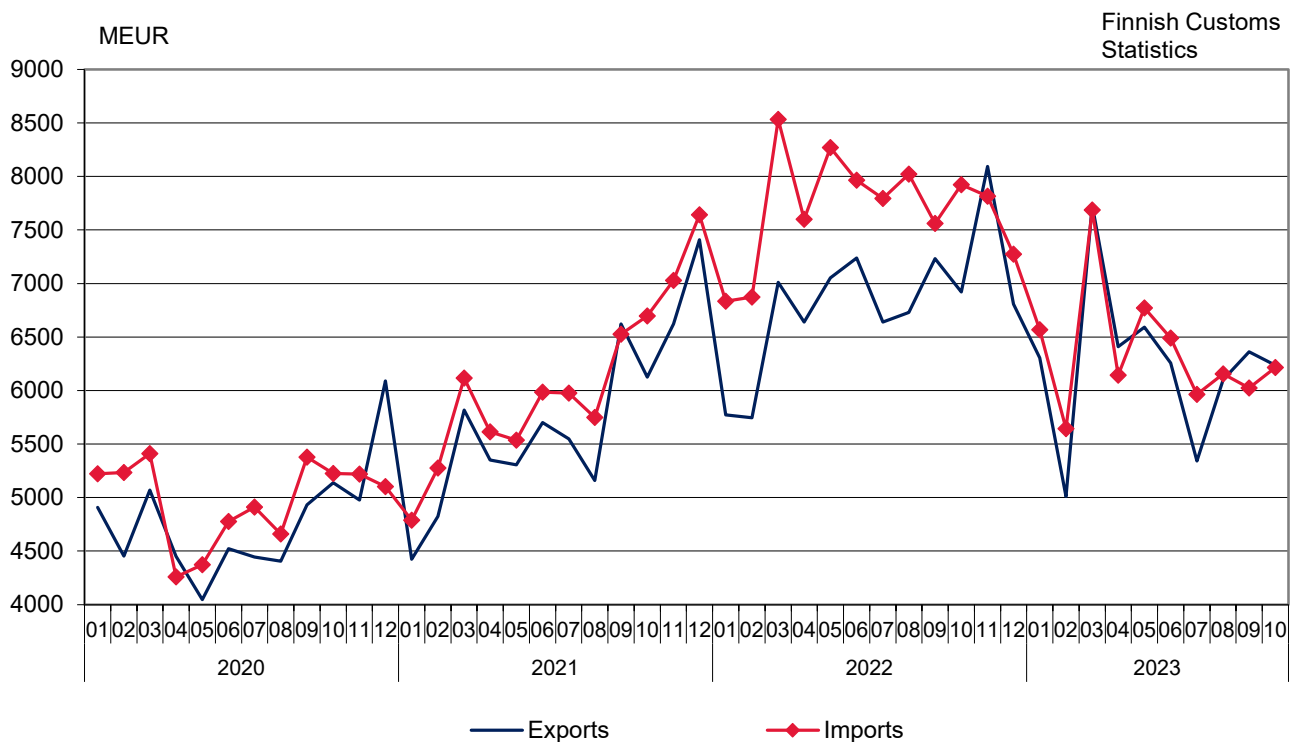


# Monthly statistics on the international trade in goods

## October 2023

Figure 1. Exports and imports of Finland 2020– 2023



Helsinki 29.12.2023. Free for publication at 9.00 a.m.

Quoting is encouraged provided Finnish Customs is acknowledged as the source.

## Both volume of exports and volume of imports decreased in October

The value of Finnish exports of goods decreased by 9.9 per cent year-on-year in October, according to the international trade in goods statistics provided by Finnish Customs. The value of Finnish exports was EUR 6.2 billion. Export volume decreased by 2.1 per cent, and export prices declined by 6.3 per cent year-on-year. The value of imports decreased by 21.6 per cent in October to EUR 6.2 billion. Import prices declined by 8.5 per cent, and import volume decreased by 12.9 per cent compared to October 2022. In January-October, the total value of exports decreased by 6.9 percent and the value of imports by 17.7 percent compared to the corresponding period of the previous year. Change of export volume during the latest 12 months was -3.7 per cent (12 month moving average November 2022 – October 2023). The corresponding figure for import volume was -10.7 per cent.

In October 2023, the trade balance showed a surplus of EUR 23 million. In January-October 2023, the trade balance had accumulated a deficit of 1.3 billion euros, which was 9.1 billion euros less than a year earlier. The aggregate trade surplus by commodity group for products of industrial machinery and equipment and metals increased compared to the previous year. The trade surplus in products of both mechanical and chemical forest industry decreased. The deficit increased for transport equipment, but decreased for ores and metal scrap, crude oil and refined petroleum products and electrical machinery and equipment.

The terms of trade improved in October compared to the corresponding month of 2022 as import prices declined more rapidly than export prices. The point figure in October was 100.2, while it was 97.8 in October 2022. The terms of trade declined from September 2023.

## Export value of capital goods decreased in October

The value of exports of capital goods decreased by 2.5 per cent in October, and the value of exports of industrial supplies decreased by 17.7 per cent year-on-year. The value of exports of fuels and lubricants decreased by 6.8 percent. The value of exports of consumer goods declined by 1.1 percent. The value of exports of food and beverages increased by 1.5 percent and the value of exports of transport equipment and parts by 0.1 per cent.

The value of imports of industrial supplies decreased by 27.9 per cent in October and the value of imports of capital goods by 14.2 per cent year-on-year. The value of imports of transportation equipment and their parts decreased by 6.2 percent. The value of imports of fuels and lubricants decreased by 42.1 percent. The value of imports of food and beverages decreased by 2.9 percent and of consumer goods by 9.9 percent.

## Both internal and external trade fell in October

The value of exports to EU countries decreased by 2.4 percent and exports outside the EU by 19.0 percent in October. Imports from EU countries fell by 12.3 percent and imports from outside the EU by 32.4 percent in October. In January-October, total exports to EU countries decreased by 5.5 percent and exports to outside the EU by 8.8 percent. In the same period, imports from EU countries decreased by 12.2 percent and from outside the EU by 24.3 percent.

**Table 1. Total development (e million)**

	October		Change %	January-October		Change %
	2022	2023		2022	2023	
Exports (fob)	6 922	6 237	-9,9	66 985	62 345	-6,9
Imports (cif)	7 923	6 214	-21,6	77 378	63 660	-17,7
Trade balance	-1 000	23		-10 393	-1 315	

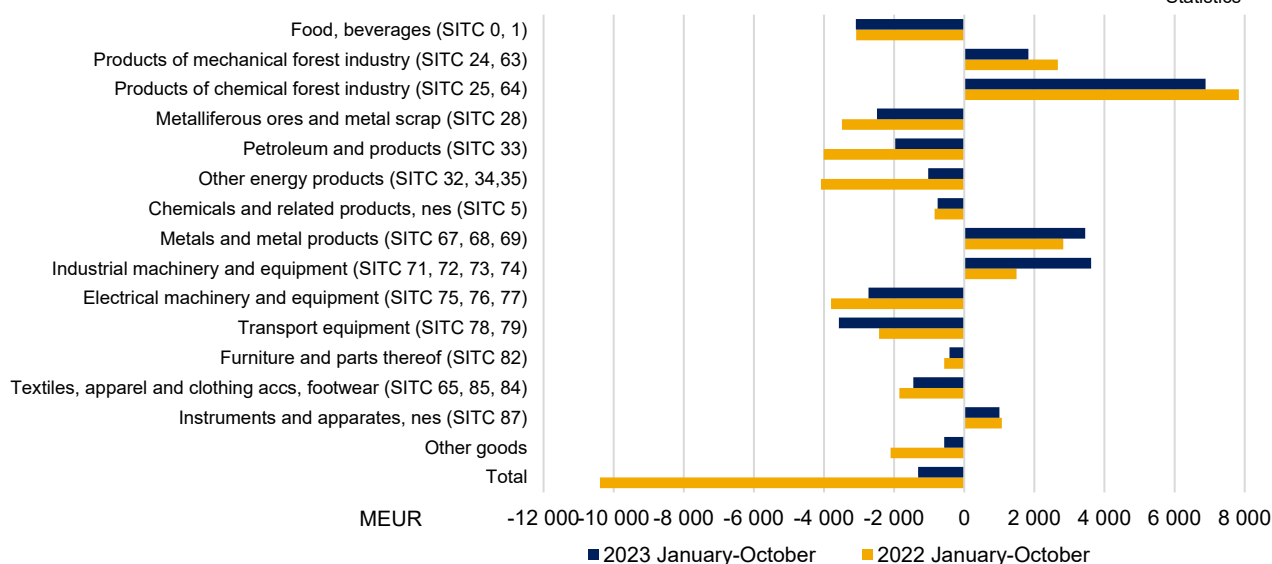
**Table 2. International trade indexes**

2020=100	October		Change %		Average *	Change %
	2022:10	2023:10	2023:10/ 2023:09	2023:10/ 2022:10		
<b>Volume index</b>						
Exports	98,7	96,6	-1,6	-2,1	97,3	-3,7
Imports	105,9	92,3	2,9	-12,9	94,5	-10,7
<b>Unit value index</b>						
Exports	144,2	135,1	-0,1	-6,3	137,4	-0,7
Imports	147,5	134,9	0,8	-8,5	137,9	-4,1

\* Moving 12-month averages

**Figure 2. Trade balance (EUR million) in combined SITC commodity groups in January-October 2022 and 2023**

Finnish  
Customs  
Statistics



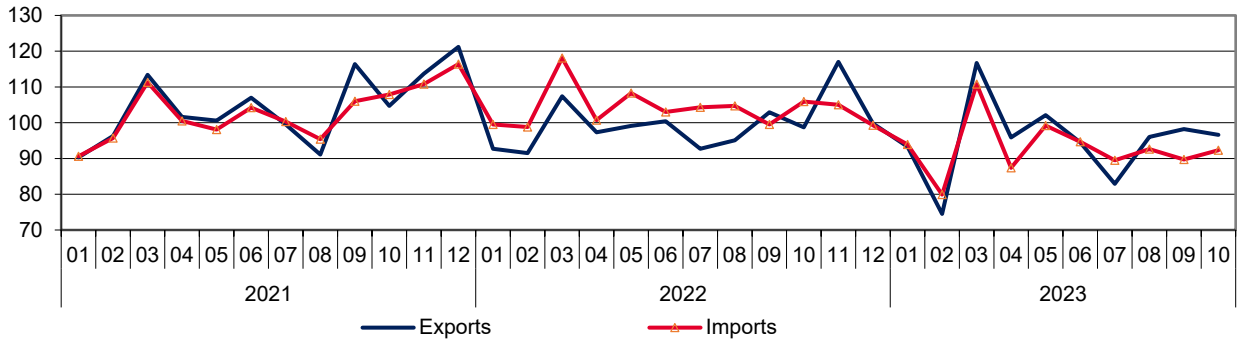
**Table 3. Trade balance (EUR million) in combined SITC commodity groups in January-October 2022 and 2023**

	Trade balance 2022 (01-10)	Trade balance 2023 (01-10)	Share of exports % 2023 (01-10)*	Share of imports % 2023 (01-10)*
Food, beverages (SITC 0, 1)	-3 084	-3 091	2,8	7,6
Products of mechanical forest industry (SITC 24, 63)	2 670	1 829	4,0	1,1
Products of chemical forest industry (SITC 25, 64)	7 831	6 881	12,1	1,1
Metalliferous ores and metal scrap (SITC 28)	-3 491	-2 489	3,0	6,9
Petroleum and products (SITC 33)	-4 011	-1 970	8,8	11,7
Other energy products (SITC 32, 34,35)	-4 087	-1 030	1,0	2,6
Chemicals and related products, nes (SITC 5)	-845	-759	10,4	11,4
Metals and metal products (SITC 67, 68, 69)	2 823	3 448	13,9	8,2
Industrial machinery and equipment (SITC 71, 72, 73, 74)	1 491	3 619	17,2	11,2
Electrical machinery and equipment (SITC 75, 76, 77)	-3 799	-2 732	9,1	13,2
Transport equipment (SITC 78, 79)	-2 432	-3 576	4,7	10,3
Furniture and parts thereof (SITC 82)	-574	-423	0,4	1,0
Textiles, apparel and clothing accs, footwear (SITC 65, 85, 84)	-1 850	-1 455	1,1	3,3
Instruments and apparatuses, nes (SITC 87)	1 070	1 003	3,7	2,0
Other goods	-2 103	-570	7,7	8,4
<b>Total</b>	<b>-10 393</b>	<b>-1 315</b>	<b>100,0</b>	<b>100,0</b>

\* Share of total imports / exports

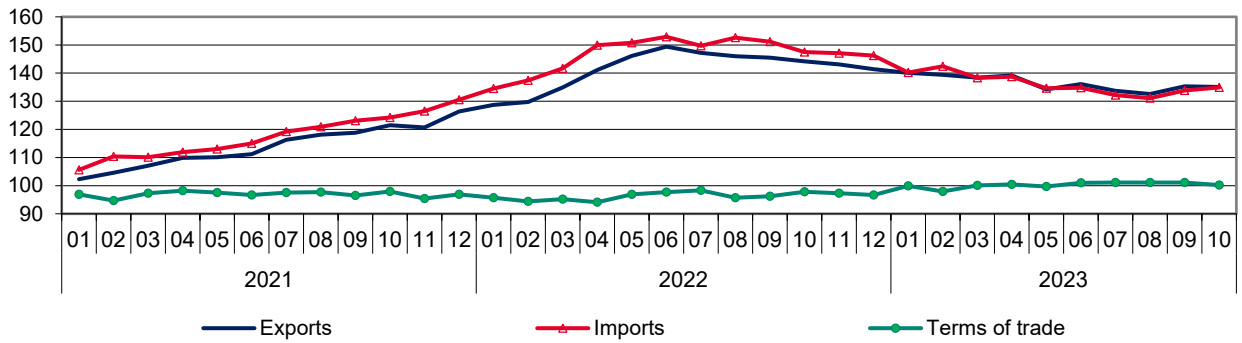
**Figure 3. Volume index 2021–2023**  
2020 = 100

Finnish Customs  
Statistics

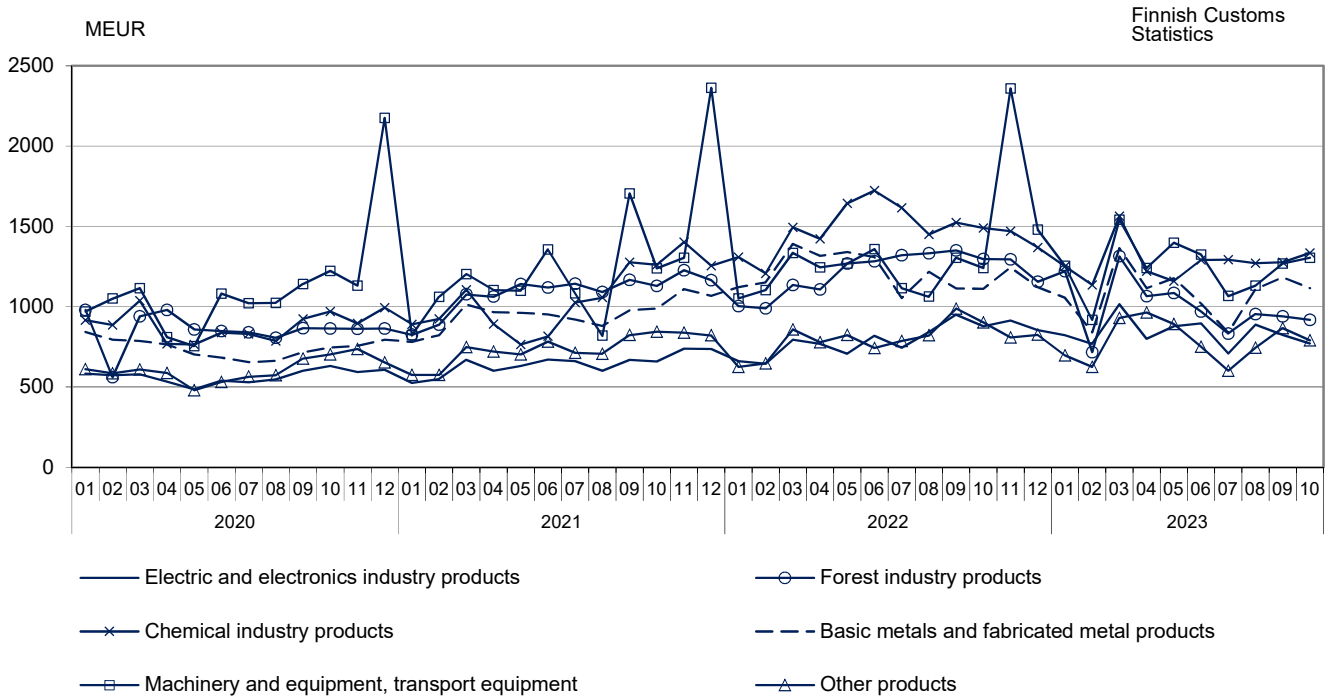


**Figure 4. Unit value index and Terms of trade 2021–2023**  
2020 = 100

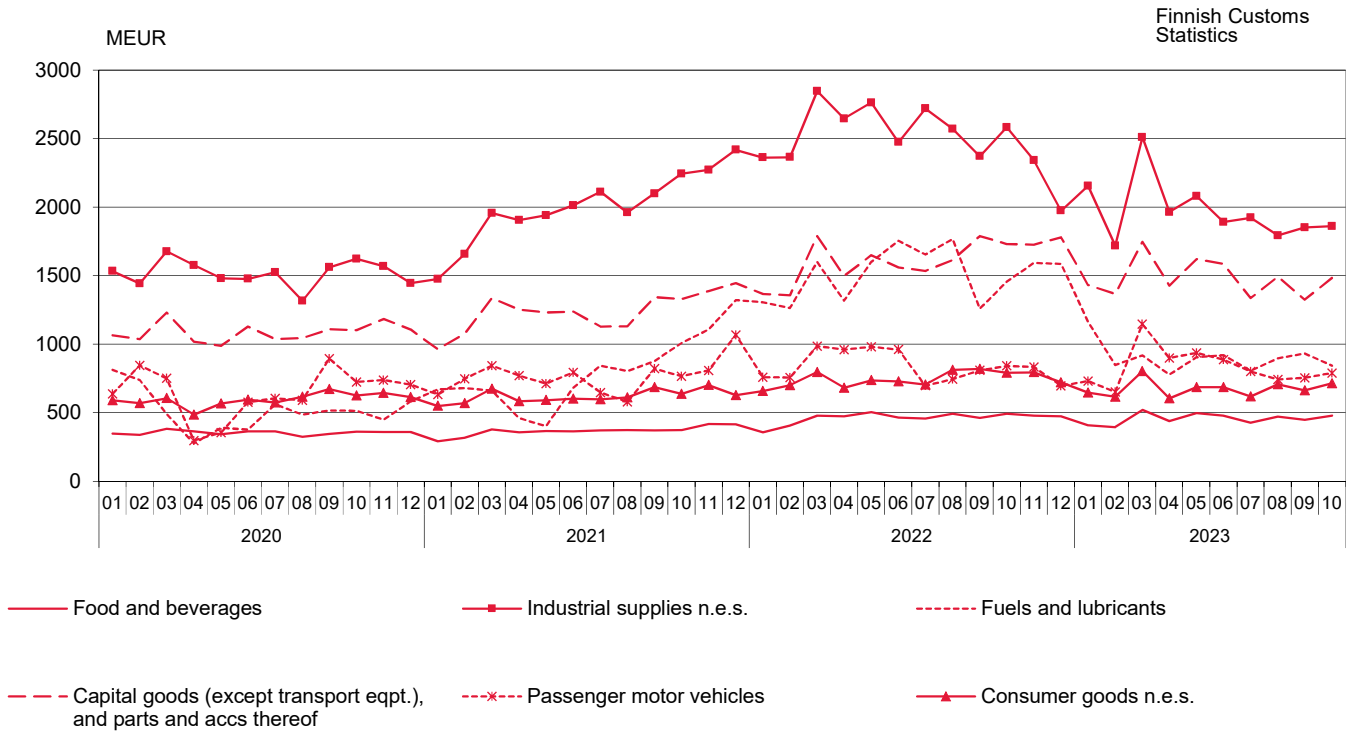
Finnish Customs  
Statistics



**Figure 5. Exports by Products by Activity (CPA) 2020 – 2023**

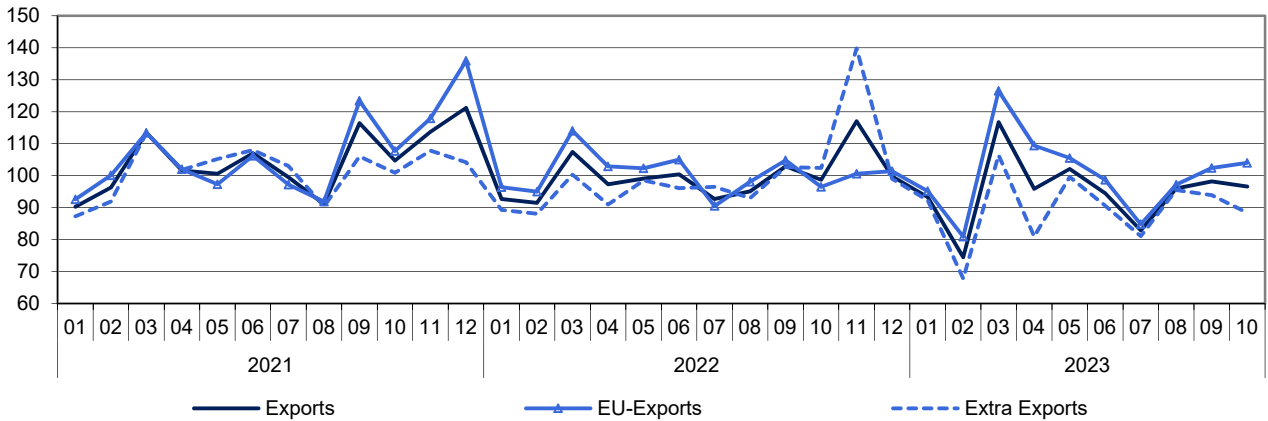


**Figure 6. Imports by broad economic categories (BEC) 2020 – 2023**



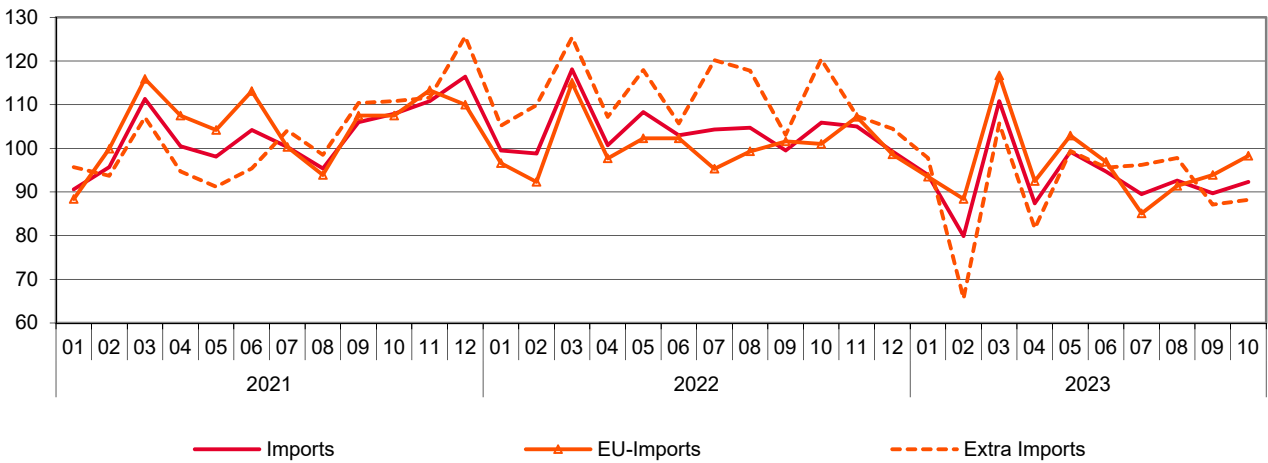
**Figure 7. Volume index of Exports by months 2021–2023**  
2020 = 100

Finnish Customs  
Statistics



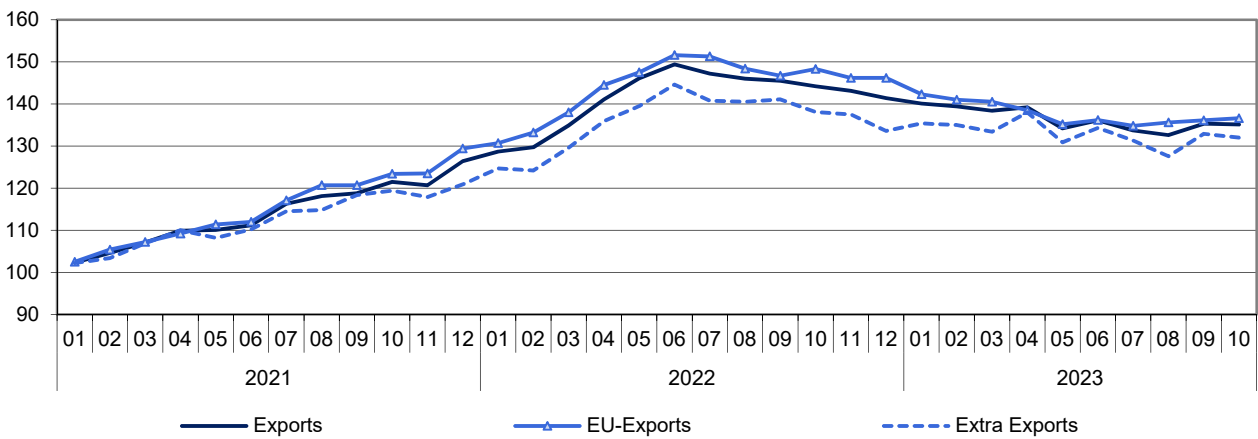
**Figure 8. Volume index of Imports by months 2021–2023**  
2020 = 100

Finnish Customs  
Statistics



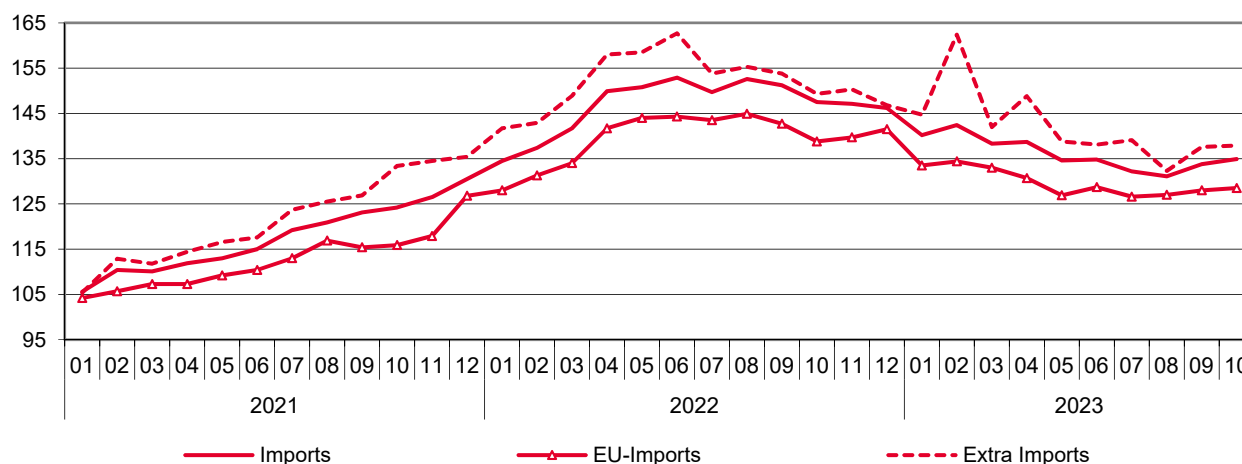
**Figure 9. Unit value index of Exports by months 2021–2023**  
2020 = 100

Finnish Customs  
Statistics



**Figure 10. Unit value index of Imports by months 2021–2023**  
2020 = 100

Finnish Customs  
Statistics



**Table 4. International trade indexes**  
2020=100

	October		Change %		Average *	Change %
	2022:10	2023:10	2023:10/ 2023:09	2023:10/ 2022:10		
<b>Volume index</b>						
Exports	98,7	96,6	-1,6	-2,1	97,3	-3,7
EU-Exports	96,5	104,0	1,6	7,7	100,6	-4,2
Extra Exports	102,4	88,4	-5,9	-13,6	94,6	-3,0
Imports	105,9	92,3	2,9	-12,9	94,5	-10,7
EU-Imports	101,0	98,3	4,7	-2,6	97,1	-5,0
Extra Imports	120,4	88,2	1,3	-26,8	93,9	-17,7
<b>Unit value index</b>						
Exports	144,2	135,1	-0,1	-6,3	137,4	-0,7
EU-Exports	148,3	136,6	0,3	-7,9	139,1	-1,4
Extra Exports	138,1	132,0	-0,7	-4,4	133,5	0,3
Imports	147,5	134,9	0,8	-8,5	137,9	-4,1
EU-Imports	138,8	128,5	0,4	-7,4	131,5	-3,6
Extra Imports	149,3	137,9	0,2	-7,6	143,2	-4,2
<b>Terms of Trade</b>	97,8	100,2	-0,9	2,4	99,7	3,6

\* Moving 12-month averages

**Table 5. Exports by SITC**

SITC Rev.4		October 2023			January-October 2023		
		value MEUR	share %	change %	value MEUR	share %	change %
	<b>Total exports</b>	<b>6 237</b>	<b>100,0</b>	<b>-9,9</b>	<b>62 345</b>	<b>100,0</b>	<b>-6,9</b>
<b>0</b>	<b>Food and live animals</b>	<b>160</b>	<b>2,6</b>	<b>-10,6</b>	<b>1 525</b>	<b>2,4</b>	<b>-6,7</b>
02	Dairy products and birds' eggs	35	0,6	-25,3	422	0,7	-11,1
05	Vegetables and fruit	7	0,1	21,6	62	0,1	-16,5
<b>1</b>	<b>Beverages and tobacco</b>	<b>38</b>	<b>0,6</b>	<b>77,1</b>	<b>230</b>	<b>0,4</b>	<b>24,5</b>
<b>2</b>	<b>Crude materials, inedible, except fuels</b>	<b>565</b>	<b>9,1</b>	<b>-23,7</b>	<b>6 392</b>	<b>10,3</b>	<b>-15,4</b>
212	Furskins, raw	14	0,2	-49,6	293	0,5	29,9
24	Cork and wood	169	2,7	-8,4	1 742	2,8	-29,3
248	Wood, simply worked	153	2,5	-11,0	1 605	2,6	-31,3
25	Pulp and waste paper	180	2,9	-42,9	2 265	3,6	-3,5
28	Metalliferous ores and metal scrap	182	2,9	-4,5	1 885	3,0	-17,4
<b>3</b>	<b>Mineral fuels etc</b>	<b>699</b>	<b>11,2</b>	<b>-5,9</b>	<b>6 089</b>	<b>9,8</b>	<b>-13,8</b>
33	Petroleum and products	654	10,5	-2,9	5 490	8,8	-11,0
<b>4</b>	<b>Animal, vegetable oil, fat</b>	<b>1</b>	<b>0,0</b>	<b>-54,8</b>	<b>22</b>	<b>0,0</b>	<b>-20,7</b>
<b>5</b>	<b>Chemicals and related products, nes</b>	<b>597</b>	<b>9,6</b>	<b>-18,7</b>	<b>6 505</b>	<b>10,4</b>	<b>-16,5</b>
51+52	Organic and inorganic chemicals	167	2,7	-26,7	1 765	2,8	-26,3
54	Medicinal, pharm. products	127	2,0	4,7	1 521	2,4	54,1
57+58	Plastics in primary and non-primary forms	148	2,4	-25,6	1 652	2,6	-24,4
<b>6</b>	<b>Basic manufactures</b>	<b>1 587</b>	<b>25,4</b>	<b>-13,4</b>	<b>16 032</b>	<b>25,7</b>	<b>-14,3</b>
63	Wood and cork manufactures	80	1,3	-18,9	776	1,2	-24,9
634	Plywood, particle board etc	61	1,0	-14,5	590	0,9	-9,8
64	Paper, paperboard and articles thereof	501	8,0	-28,7	5 308	8,5	-15,8
65	Textile yarn, fabrics, made up articles, etc	28	0,4	-0,8	284	0,5	-7,6
67	Iron and steel	461	7,4	0,5	4 748	7,6	-15,4
68	Non-ferrous metals	282	4,5	-7,7	2 682	4,3	-14,8
69	Manufactures of metals, nes	124	2,0	-3,5	1 223	2,0	-2,9
<b>7</b>	<b>Machinery, transport equipmt</b>	<b>1 941</b>	<b>31,1</b>	<b>-0,8</b>	<b>19 406</b>	<b>31,1</b>	<b>4,8</b>
71	Power generating machinery and equipment	200	3,2	10,9	2 211	3,5	15,9
72	Machinery for special industries	527	8,5	1,9	5 242	8,4	14,8
74	General industrial machinery, nes	349	5,6	14,1	3 040	4,9	11,6
75	Office machines and adp machines	28	0,5	-3,2	310	0,5	-3,3
76	Telecomm, sound recording equipment	60	1,0	-18,0	620	1,0	-18,2
77	Electric machinery, nes and parts	431	6,9	-11,3	4 763	7,6	17,3
78	Road vehicles	302	4,8	2,4	2 418	3,9	-28,3
79	Other transport equipment	16	0,3	-59,9	542	0,9	-4,4
793	Ships and boats etc	9	0,2	-71,3	457	0,7	4,9
<b>8</b>	<b>Miscellaneous manufactured articles</b>	<b>445</b>	<b>7,1</b>	<b>-14,3</b>	<b>4 077</b>	<b>6,5</b>	<b>-4,2</b>
82	Furniture and parts thereof	24	0,4	-4,6	230	0,4	-10,0
84	Articles of apparel and clothing accessories	39	0,6	-1,8	267	0,4	-2,8
85	Footwear	12	0,2	-20,1	106	0,2	-10,6
87	Instruments and apparatuses, nes	242	3,9	-20,3	2 304	3,7	-2,6
<b>9</b>	<b>Goods not classified elsewhere</b>	<b>205</b>	<b>3,3</b>	<b>5,3</b>	<b>2 068</b>	<b>3,3</b>	<b>65,8</b>



**Table 6. Imports by SITC**

SITC Rev.4	October 2023			January-October 2023		
	value MEUR	share %	change %	value MEUR	share %	change %
<b>Total imports</b>	<b>6 214</b>	<b>100,0</b>	<b>-21,6</b>	<b>63 660</b>	<b>100,0</b>	<b>-17,7</b>
<b>0 Food and live animals</b>	<b>448</b>	<b>7,2</b>	<b>-2,2</b>	<b>4 276</b>	<b>6,7</b>	<b>-1,3</b>
02 Dairy products and birds' eggs	38	0,6	-8,1	432	0,7	10,5
05 Vegetables and fruit	98	1,6	0,0	965	1,5	2,1
<b>1 Beverages and tobacco</b>	<b>59</b>	<b>1,0</b>	<b>-2,8</b>	<b>570</b>	<b>0,9</b>	<b>-0,1</b>
<b>2 Crude materials, inedible, except fuels</b>	<b>495</b>	<b>8,0</b>	<b>-37,1</b>	<b>5 691</b>	<b>8,9</b>	<b>-22,5</b>
212 Furskins, raw	0	0,0	-94,9	134	0,2	-2,7
24 Cork and wood	36	0,6	-27,0	393	0,6	-13,0
248 Wood, simply worked	5	0,1	-16,8	51	0,1	-63,9
25 Pulp and waste paper	10	0,2	-47,4	136	0,2	-23,8
28 Metalliferous ores and metal scrap	382	6,1	-40,2	4 374	6,9	-24,2
<b>3 Mineral fuels etc</b>	<b>841</b>	<b>13,5</b>	<b>-42,7</b>	<b>9 089</b>	<b>14,3</b>	<b>-40,1</b>
33 Petroleum and products	689	11,1	-31,3	7 461	11,7	-26,7
<b>4 Animal, vegetable oil, fat</b>	<b>42</b>	<b>0,7</b>	<b>-24,0</b>	<b>484</b>	<b>0,8</b>	<b>-18,3</b>
<b>5 Chemicals and related products, nes</b>	<b>699</b>	<b>11,3</b>	<b>-25,7</b>	<b>7 265</b>	<b>11,4</b>	<b>-15,8</b>
51+52 Organic and inorganic chemicals	147	2,4	-50,4	1 772	2,8	-29,1
54 Medicinal, pharm. products	224	3,6	-1,6	1 991	3,1	-3,0
57+58 Plastics in primary and non-primary forms	137	2,2	-19,8	1 434	2,3	-22,2
<b>6 Basic manufactures</b>	<b>810</b>	<b>13,0</b>	<b>-14,3</b>	<b>7 954</b>	<b>12,5</b>	<b>-24,5</b>
63 Wood and cork manufactures	28	0,5	-13,3	295	0,5	-21,4
634 Plywood, particle board etc	13	0,2	-15,7	131	0,2	-30,8
64 Paper, paperboard and articles thereof	56	0,9	-10,5	555	0,9	-13,0
65 Textile yarn, fabrics, made up articles, etc	55	0,9	-20,4	557	0,9	-22,3
67 Iron and steel	160	2,6	-35,4	1 764	2,8	-34,0
68 Non-ferrous metals	178	2,9	37,8	1 293	2,0	-33,0
69 Manufactures of metals, nes	202	3,2	-16,1	2 148	3,4	-17,1
<b>7 Machinery, transport equipmt</b>	<b>2 166</b>	<b>34,9</b>	<b>-11,9</b>	<b>22 095</b>	<b>34,7</b>	<b>-5,0</b>
71 Power generating machinery and equipment	128	2,1	-39,3	1 756	2,8	-23,3
72 Machinery for special industries	190	3,1	-1,2	1 895	3,0	-2,4
74 General industrl machy, nes	303	4,9	-21,4	3 238	5,1	-7,0
75 Office machines and adp machines	154	2,5	-6,2	1 250	2,0	-19,4
76 Telecomm, sound recording equipment	230	3,7	-1,3	1 845	2,9	-8,0
77 Electric machinery, nes and parts	518	8,3	-15,8	5 330	8,4	-1,0
78 Road vehicles	597	9,6	-0,8	6 022	9,5	4,5
79 Other transport equipment	20	0,3	-11,3	514	0,8	-15,8
793 Ships and boats etc	3	0,0	-60,0	227	0,4	-31,6
<b>8 Miscellaneous manufactured articles</b>	<b>602</b>	<b>9,7</b>	<b>-16,8</b>	<b>5 843</b>	<b>9,2</b>	<b>-11,9</b>
82 Furniture and parts thereof	71	1,1	-4,0	653	1,0	-21,3
84 Articles of apparel and clothing accessories	120	1,9	-33,8	1 235	1,9	-16,7
85 Footwear	31	0,5	-28,5	320	0,5	-8,8
87 Instruments and apparatuses, nes	131	2,1	-2,1	1 301	2,0	0,5
<b>9 Goods not classified elsewhere</b>	<b>51</b>	<b>0,8</b>	<b>113,6</b>	<b>394</b>	<b>0,6</b>	<b>22,5</b>

**Table 7. Exports and imports by Products by Activity (CPA2015)**

Products by Activity		Exports 2023				Imports 2023			
		October	January-October			October	January-October		
		value MEUR	value MEUR	share %	change %	value MEUR	value MEUR	share %	change %
<b>Total exports / imports</b>		<b>6 237</b>	<b>62 345</b>	<b>100,0</b>	<b>-6,9</b>	<b>6 214</b>	<b>63 660</b>	<b>100</b>	<b>-17,7</b>
<b>A</b>	<b>Products of agriculture, forestry and fishing</b>	<b>73</b>	<b>749</b>	<b>1,2</b>	<b>5,3</b>	<b>140</b>	<b>1 600</b>	<b>2,5</b>	<b>-15,8</b>
<b>B</b>	<b>Products from mining and quarrying</b>	<b>73</b>	<b>884</b>	<b>1,4</b>	<b>-6,3</b>	<b>704</b>	<b>8 228</b>	<b>12,9</b>	<b>-26,1</b>
061	Crude petroleum	-	0	0,0	-97,9	427	4 853	7,6	-19,5
<b>C</b>	<b>Manufactured goods</b>	<b>5 906</b>	<b>58 635</b>	<b>94,0</b>	<b>-7,6</b>	<b>5 150</b>	<b>51 640</b>	<b>81,1</b>	<b>-13,8</b>
<b>10-12</b>	<b>Food, beverages and tobacco</b>	<b>161</b>	<b>1 498</b>	<b>2,4</b>	<b>-1,9</b>	<b>424</b>	<b>4 042</b>	<b>6,3</b>	<b>4,0</b>
<b>13-15</b>	<b>Textiles, clothes, leather and leather products</b>	<b>83</b>	<b>707</b>	<b>1,1</b>	<b>-5,3</b>	<b>209</b>	<b>2 156</b>	<b>3,4</b>	<b>-15,7</b>
<b>16-18</b>	<b>Forest industry products</b>	<b>918</b>	<b>10 018</b>	<b>16,1</b>	<b>-17,2</b>	<b>123</b>	<b>1 234</b>	<b>1,9</b>	<b>-18,4</b>
16	Wood and wood products	238	2 454	3,9	-29,1	55	527	0,8	-23,3
17	Paper, paper and paperboard products, pulp	680	7 563	12,1	-12,4	67	705	1,1	-14,2
<b>19-22</b>	<b>Chemical industry products</b>	<b>1 335</b>	<b>12 802</b>	<b>20,5</b>	<b>-14,0</b>	<b>1 133</b>	<b>11 747</b>	<b>18,5</b>	<b>-23,3</b>
19	Coke and petroleum products	599	4 946	7,9	-10,2	273	2 743	4,3	-38,9
20	Chemicals and chemical products	458	4 839	7,8	-27,3	463	5 216	8,2	-21,8
21	Pharmaceutical products and pharmaceutical preparations	134	1 605	2,6	48,1	225	2 034	3,2	-2,8
22	Rubber and plastic products	144	1 412	2,3	-13,5	172	1 754	2,8	-15,3
<b>23</b>	<b>Other non-metallic mineral products</b>	<b>63</b>	<b>556</b>	<b>0,9</b>	<b>-2,9</b>	<b>84</b>	<b>869</b>	<b>1,4</b>	<b>-14,0</b>
<b>24-25</b>	<b>Metal and metal products</b>	<b>1 116</b>	<b>10 821</b>	<b>17,4</b>	<b>-10,8</b>	<b>670</b>	<b>6 400</b>	<b>10,1</b>	<b>-28,7</b>
24	Basic metals	948	9 334	15,0	-12,6	462	4 157	6,5	-33,6
25	Fabricated metal products (excl. machinery and equipment)	167	1 487	2,4	2,4	208	2 243	3,5	-17,2
<b>26-27</b>	<b>Electric and electronics industry products</b>	<b>772</b>	<b>8 383</b>	<b>13,4</b>	<b>7,3</b>	<b>1 052</b>	<b>9 961</b>	<b>15,6</b>	<b>-4,5</b>
26	Computers, electronic and optical products	313	3 412	5,5	-4,2	621	5 634	8,9	-5,3
263	Communication equipment	45	478	0,8	-20,9	170	1 363	2,1	-4,7
27	Electrical equipment	459	4 971	8,0	16,9	431	4 327	6,8	-3,3
<b>28</b>	<b>Machinery and equipment</b>	<b>983</b>	<b>9 447</b>	<b>15,2</b>	<b>15,4</b>	<b>573</b>	<b>6 341</b>	<b>10</b>	<b>-8,9</b>
<b>29-30</b>	<b>Transport equipment</b>	<b>322</b>	<b>3 007</b>	<b>4,8</b>	<b>-23,0</b>	<b>674</b>	<b>7 048</b>	<b>11,1</b>	<b>-1,1</b>
29	Motor vehicles	288	2 154	3,5	-30,7	618	5 973	9,4	0,2
30	Other transport equipment	34	852	1,4	7,1	56	1 075	1,7	-7,3
<b>31-33</b>	<b>Other manufactured goods</b>	<b>154</b>	<b>1 396</b>	<b>2,2</b>	<b>-12,5</b>	<b>209</b>	<b>1 843</b>	<b>2,9</b>	<b>-15,0</b>
<b>D</b>	<b>Electricity, gas, steam, air conditioning *</b>	<b>26</b>	<b>311</b>	<b>0,5</b>	<b>-57,1</b>	<b>25</b>	<b>376</b>	<b>0,6</b>	<b>-84,0</b>
<b>E-X</b>	<b>Other products</b>	<b>160</b>	<b>1 767</b>	<b>2,8</b>	<b>52,3</b>	<b>195</b>	<b>1 816</b>	<b>2,9</b>	<b>-11,3</b>
E 381158	Metal waste	0	0	0,0	>999	0	0	0	-98,5

\* Natural gas B 062

**Table 8. Imports and exports by BEC goods classification (Broad Economic Categories)**

BEC Rev.4	October 2023			January-October 2023		
	value MEUR	share %	change %	value MEUR	share %	change %
<b>Total imports</b>	<b>6 214</b>	<b>100,0</b>	<b>-21,6</b>	<b>63 660</b>	<b>100,0</b>	<b>-17,7</b>
1 Food and beverages	479	7,7	-2,9	4 574	7,2	-0,6
2 Industrial supplies not elsewhere specified	1 862	30,0	-27,9	19 760	31,0	-23,1
3 Fuels and lubricants	844	13,6	-42,1	9 017	14,2	-39,8
31 Primary	466	7,5	-44,2	5 429	8,5	-33,3
32 Processed	378	6,1	-39,2	3 588	5,6	-47,6
4 Capital goods (except transport equipment), and parts and accessories thereof	1 485	23,9	-14,2	14 826	23,3	-6,7
5 Transport equipment and parts and accessories thereof	791	12,7	-6,2	8 348	13,1	-1,8
6 Consumer goods not elsewhere specified	715	11,5	-9,9	6 756	10,6	-9,2
61 Durable	145	2,3	-1,8	1 366	2,1	-12,9
62 Semi-durable	255	4,1	-21,6	2 469	3,9	-16,8
63 Non-durable	315	5,1	-1,7	2 921	4,6	0,6
7 Goods not elsewhere specified	38	0,6	74,5	378	0,6	52,9
<b>Total exports</b>	<b>6 237</b>	<b>100,0</b>	<b>-9,9</b>	<b>62 345</b>	<b>100,0</b>	<b>-6,9</b>
1 Food and beverages	181	2,9	1,5	1 607	2,6	-3,9
2 Industrial supplies not elsewhere specified	2 800	44,9	-17,7	29 323	47,0	-15,7
3 Fuels and lubricants	660	10,6	-6,8	5 673	9,1	-13,8
31 Primary	18	0,3	797,6	261	0,4	107,3
32 Processed	642	10,3	-9,0	5 412	8,7	-16,1
4 Capital goods (except transport equipment), and parts and accessories thereof	1 778	28,5	-2,5	17 461	28,0	8,4
5 Transport equipment and parts and accessories thereof	448	7,2	0,1	4 442	7,1	-12,4
6 Consumer goods not elsewhere specified	292	4,7	-1,1	2 812	4,5	13,3
61 Durable	32	0,5	-8,0	300	0,5	-6,8
62 Semi-durable	110	1,8	-3,5	897	1,4	-6,8
63 Non-durable	150	2,4	2,3	1 615	2,6	34,9
7 Goods not elsewhere specified	80	1,3	15,4	1 027	1,6	267,3

**Table 9. Trade by regions and countries**

Origin/ destination	Imports 2023				Exports 2023				Trade 2023	
	October		January-October		October		January-October		October	January-October
	value MEUR	value MEUR	share %	change %	value MEUR	value MEUR	share %	change %	value MEUR	value MEUR
<b>Total exports / imports</b>	<b>6 214</b>	<b>63 660</b>	<b>100,0</b>	<b>-17,7</b>	<b>6 237</b>	<b>62 345</b>	<b>100</b>	<b>-6,9</b>	<b>23</b>	<b>-1 315</b>
EU	3 746	37 097	58,3	-12,2	3 700	36 187	58	-5,5	-45	-911
Euro zone *	2 450	24 341	38,2	-9,4	2 348	24 071	38,6	-8,3	-101	-270
External trade	2 468	26 563	41,7	-24,3	2 537	26 158	42	-8,8	69	-405
Developing countries	1 072	12 108	19,0	-17,6	873	10 176	16,3	-5,1	-200	-1 932
<b>Europe</b>	<b>4 637</b>	<b>46 415</b>	<b>72,9</b>	<b>-19,0</b>	<b>4 458</b>	<b>43 454</b>	<b>69,7</b>	<b>-7,4</b>	<b>-179</b>	<b>-2 961</b>
<b>EU</b>	<b>3 746</b>	<b>37 097</b>	<b>58,3</b>	<b>-12,2</b>	<b>3 700</b>	<b>36 187</b>	<b>58</b>	<b>-5,5</b>	<b>-45</b>	<b>-911</b>
AT Austria	71	671	1,1	-10,6	52	445	0,7	-9,4	-19	-226
BE Belgium	176	1 547	2,4	4,3	178	2 044	3,3	-13,4	2	496
BG Bulgaria	10	96	0,2	-4,3	12	104	0,2	17,4	2	8
CY Cyprus	1	14	0,0	15,4	1	16	0	-35,2	1	3
CZ Czech Republic	122	952	1,5	3,2	53	475	0,8	2,9	-68	-477
DE Germany	922	9 163	14,4	-8,4	656	6 681	10,7	-17,6	-265	-2 482
DK Denmark	130	1 472	2,3	-5,0	109	1 001	1,6	-16,9	-21	-471
EE Estonia	205	2 340	3,7	-17,9	237	2 384	3,8	-13,5	33	43
ES Spain	100	1 206	1,9	-14,1	98	987	1,6	-5,5	-2	-219
FR France	180	1 715	2,7	3,1	203	2 163	3,5	2,9	23	449
GR Greece	6	96	0,2	-32,4	16	197	0,3	17,0	10	101
HU Hungary	48	381	0,6	-7,7	24	213	0,3	-4,6	-24	-168
HR Croatia	3	43	0,1	7,8	6	52	0,1	7,3	3	9
IE Ireland	50	478	0,8	-7,0	20	190	0,3	-4,5	-30	-289
IT Italy	203	1 924	3,0	-1,6	172	1 797	2,9	-10,8	-32	-126
LT Lithuania	49	566	0,9	-7,3	81	713	1,1	-11,9	32	147
LU Luxembourg	9	81	0,1	-26,7	6	73	0,1	111,4	-2	-7
LV Latvia	43	428	0,7	16,9	64	677	1,1	0,0	22	249
MT Malta	1	8	0,0	11,0	1	11	0	32,8	0	3
NL Netherlands	357	3 343	5,3	-18,7	511	5 216	8,4	4,7	154	1 874
PL Poland	221	2 382	3,7	-4,7	298	2 272	3,6	8,5	77	-111
PT Portugal	22	344	0,5	-22,2	23	215	0,3	8,0	0	-128
RO Romania	24	215	0,3	-19,2	26	250	0,4	19,5	2	35
SE Sweden	739	7 212	11,3	-25,0	752	6 764	10,8	-8,7	13	-447
SI Slovenia - Slovenien - Slovenia	12	120	0,2	-17,8	10	110	0,2	45,9	-2	-10
SK Slovakia	42	297	0,5	4,1	18	150	0,2	-18,1	-24	-147
<b>Rest of Europe</b>	<b>891</b>	<b>9 318</b>	<b>14,6</b>	<b>-38,2</b>	<b>758</b>	<b>7 268</b>	<b>11,7</b>	<b>-15,6</b>	<b>-134</b>	<b>-2 050</b>
CH Switzerland	58	568	0,9	-16,7	132	1 201	1,9	-0,2	73	633
GB United Kingdom	104	1 588	2,5	-13,7	233	2 137	3,4	-12,9	129	549
XI Northern Ireland	1	8	0,0	-7,4	5	43	0,1	-13,1	5	34
IS Iceland	2	21	0,0	-25,7	6	59	0,1	-11,5	4	39
NO Norway	495	4 732	7,4	-14,2	214	1 890	3	0,0	-281	-2 843
RU Russia	134	1 201	1,9	-79,0	22	503	0,8	-70,6	-112	-697
TR Türkiye	75	855	1,3	3,4	112	1 082	1,7	19,2	37	227
UA Ukraine	10	76	0,1	1,2	15	139	0,2	23,2	5	63
<b>North Africa</b>	<b>7</b>	<b>183</b>	<b>0,3</b>	<b>45,2</b>	<b>54</b>	<b>584</b>	<b>0,9</b>	<b>-8,4</b>	<b>46</b>	<b>402</b>
EG Egypt	4	55	0,1	-5,7	35	305	0,5	-18,9	31	250
MA Morocco	2	37	0,1	-30,0	8	121	0,2	9,3	6	84
<b>Rest of Africa</b>	<b>38</b>	<b>392</b>	<b>0,6</b>	<b>-59,9</b>	<b>73</b>	<b>797</b>	<b>1,3</b>	<b>1,3</b>	<b>35</b>	<b>406</b>
ZA South Africa	16	191	0,3	-17,3	35	356	0,6	-7,9	19	164
<b>Middle East</b>	<b>36</b>	<b>314</b>	<b>0,5</b>	<b>-17,1</b>	<b>85</b>	<b>953</b>	<b>1,5</b>	<b>5,2</b>	<b>49</b>	<b>639</b>
AE Arab Emirates	2	14	0,0	-32,0	21	300	0,5	11,8	19	285
IL Israel	7	96	0,2	11,0	16	167	0,3	-9,3	9	71
SA Saudi Arabia	1	13	0,0	-54,4	27	277	0,4	14,0	25	265
<b>Rest of Asia</b>	<b>947</b>	<b>10 418</b>	<b>16,4</b>	<b>-16,0</b>	<b>681</b>	<b>7 696</b>	<b>12,3</b>	<b>-6,5</b>	<b>-266</b>	<b>-2 723</b>
CN China	517	5 616	8,8	-21,5	265	2 980	4,8	-8,1	-251	-2 636
HK Hong Kong	4	60	0,1	-25,8	8	82	0,1	-2,0	5	22
ID Indonesia	19	156	0,2	-26,2	40	451	0,7	94,3	21	295
IN India	40	487	0,8	-9,2	44	745	1,2	24,8	4	258
JP Japan	62	695	1,1	-9,4	111	1 027	1,6	-33,5	49	332
KR South Korea	70	684	1,1	11,2	55	699	1,1	-17,6	-15	16
KZ Kazakhstan	1	6	0,0	-95,4	17	240	0,4	32,5	16	234
MY Malaysia	21	298	0,5	-31,3	13	145	0,2	-5,0	-8	-153
PH Philippines	4	108	0,2	-36,7	7	100	0,2	-18,4	3	-8
SG Singapore	18	235	0,4	-0,2	18	185	0,3	16,3	0	-50
TH Thailand	29	293	0,5	-28,4	15	290	0,5	35,8	-14	-3
TW Taiwan	93	962	1,5	33,3	12	141	0,2	-34,4	-81	-821
<b>North America</b>	<b>336</b>	<b>3 805</b>	<b>6,0</b>	<b>-0,1</b>	<b>690</b>	<b>6 434</b>	<b>10,3</b>	<b>-0,3</b>	<b>354</b>	<b>2 629</b>
CA Canada	32	410	0,6	-37,6	75	990	1,6	16,5	43	580
US USA	304	3 395	5,3	7,7	615	5 440	8,7	-2,9	311	2 045
<b>Middle America</b>	<b>26</b>	<b>440</b>	<b>0,7</b>	<b>1,5</b>	<b>47</b>	<b>543</b>	<b>0,9</b>	<b>-18,1</b>	<b>21</b>	<b>103</b>
MX Mexico	19	226	0,4	-5,0	36	405	0,6	-25,1	16	179
<b>South America</b>	<b>103</b>	<b>1 270</b>	<b>2,0</b>	<b>-6,8</b>	<b>93</b>	<b>1 139</b>	<b>1,8</b>	<b>-29,3</b>	<b>-9</b>	<b>-130</b>
AR Argentina	1	9	0,0	-33,9	4	49	0,1	-85,8	3	40
BR Brazil	73	617	1,0	-8,9	46	568	0,9	-15,4	-27	-49
CL Chile	3	72	0,1	-6,5	18	231	0,4	-0,5	15	159
CO Colombia	7	134	0,2	-49,4	7	96	0,2	-19,0	0	-38
<b>Oceania</b>	<b>83</b>	<b>423</b>	<b>0,7</b>	<b>-22,3</b>	<b>57</b>	<b>743</b>	<b>1,2</b>	<b>-4,9</b>	<b>-27</b>	<b>320</b>
AU Australia	81	324	0,5	-25,9	49	659	1,1	-5,8	-32	335

\* Croatia has been added in euro area country group from year 2023

**Table 10. Volume index, exports 2020=100**

Products by Activity (CPA2015)	October 2023:10	Change	Change	Effect*	Mean** 2022:11- 2023:10	Change	Weights 2022
		2023:10/ 2023:09	2023:10/ 2022:10	% pp		2022:11-2023:10/ 2021:11-2022:10	
Total exports	96,6	-1,6	-2,1	-2,10	97,3	-3,7	1000,0
01 Products of agriculture and hunting	85,0	-56,5	-30,8	-0,12	99,1	11,3	5,4
10 Food products	84,6	-7,5	-8,9	-0,07	88,7	-5,0	19,7
11 Beverages	250,2	79,8	83,7	0,12	145,4	13,2	3,0
13 Textiles	85,2	0,9	0,4	0,00	86,7	-11,3	4,5
14 Wearing apparel	130,0	20,4	-8,6	-0,02	92,2	-2,6	4,3
15 Leather and related products	103,4	-11,3	-26,5	-0,04	101,2	-11,7	2,6
16 Wood and wood products	95,2	-0,6	-0,1	-0,01	95,0	-10,4	48,9
171 Pulp, paper and paperboard	77,5	-3,7	-15,3	-0,72	81,2	-11,6	124,3
172 Articles of paper and paperboard	98,2	0,9	-8,4	-0,02	99,7	-7,4	4,5
19 Coke and refined petroleum products	96,7	17,1	33,2	0,54	81,2	3,1	82,0
20 Chemicals and chemical products	83,6	-0,4	-14,9	-0,55	89,2	-18,7	95,3
21 Basic pharmaceutical products and preparations	105,0	3,9	-16,9	-0,15	120,7	24,8	16,0
22 Rubber and plastic products	87,1	0,0	-5,3	-0,05	86,9	-18,6	23,3
23 Other non-metallic mineral products	117,8	3,4	0,7	0,00	104,6	-9,3	8,3
241 Basic iron and steel and ferro-alloys	101,8	2,5	19,6	0,43	96,8	-5,4	70,4
244 Basic precious and other non-ferrous metals	102,9	-15,1	15,5	0,35	93,8	2,9	74,2
25 Fabricated metal products	115,1	6,7	6,1	0,05	105,3	1,3	19,7
26 Computer, electronic and optical products	103,2	0,7	-19,0	-0,54	116,3	-3,7	53,8
27 Electrical equipment	123,2	-13,5	-14,8	-0,53	139,9	6,6	63,1
28 Machinery and equipment	109,6	2,7	-2,3	-0,14	109,2	6,1	123,9
29 Motor vehicles and trailers	83,7	18,4	-6,7	-0,15	67,7	-37,6	44,7
38 Waste collection, treatment and disposal services	226,0	29,1	70,8	0,01	139,6	26,6	0,3
58 Publishing services	113,1	-14,2	-31,3	-0,02	117,6	4,5	0,6

\*Effect of change

\*\* Moving 12-month averages

**Table 11. Volume index, imports 2020=100**

Products by Activity (CPA2015)	October 2023:10	Change 2023:10/ 2023:09	Change 2023:10/ 2022:10	Effect* 2023:10/ 2022:10	Mean** 2022:11- 2023:10	Change 2022:11-2023:10/ 2021:11-2022:10	Weights 2022
Total imports	92,3	2,9	-12,9	-12,90	94,5	-10,7	1000,0
01 Products of agriculture and hunting	70,2	-0,9	-10,7	-0,13	85,8	-13,1	17,7
061 Crude petroleum	70,5	-16,7	-22,4	-0,74	87,8	0,9	74,8
07 Metal ores	79,4	-29,8	-49,9	-2,38	103,9	-13,2	33,9
10 Food products	89,5	5,1	-3,9	-0,13	84,7	-7,3	43,5
13 Textiles	60,5	5,9	-16,7	-0,09	60,5	-22,4	8,7
14 Wearing apparel	83,7	-10,6	-31,0	-0,45	89,1	-9,1	18,1
15 Leather and related products	92,3	-5,9	-30,3	-0,18	102,2	-7,5	6,5
16 Wood and wood products	62,9	30,6	28,9	0,11	57,1	-29,0	8,7
19 Coke and refined petroleum products	82,6	-8,9	-20,6	-0,65	88,6	-19,6	58,6
20 Chemicals and chemical products	97,4	-2,6	-20,1	-1,49	105,5	-7,1	84,8
21 Basic pharmaceutical products and preparations	98,5	-9,4	-8,4	-0,22	98,1	1,1	27,4
22 Rubber and plastic products	80,7	4,2	-14,1	-0,30	83,1	-19,5	26,2
23 Other non-metallic mineral products	85,6	3,3	-24,2	-0,26	88,1	-18,2	13,1
241 Basic iron and steel and ferro-alloys	74,7	12,6	-26,2	-0,41	78,9	-29,0	24,2
244 Basic precious and other non-ferrous metals	134,4	24,9	11,9	0,39	94,7	-20,9	45,3
25 Fabricated metal products	91,8	6,0	-20,5	-0,59	102,7	-18,5	34,0
26 Computer, electronic and optical products	110,4	14,3	-7,8	-0,62	105,4	-7,8	78,4
27 Electrical equipment	124,6	15,1	-5,3	-0,31	120,0	-6,7	58,5
28 Machinery and equipment	100,3	7,1	-21,4	-1,83	111,6	-9,6	89,5
29 Motor vehicles and trailers	102,3	6,9	-7,0	-0,55	98,7	-9,1	76,5
35 Electricity, gas, steam and air conditioning Waste collection, treatment	52,7	68,1	-33,5	-0,48	53,1	-47,4	32,5
38 and disposal services	83,9	7,0	-30,2	-0,01	103,3	-17,7	0,3

\*Effect of change

\*\* Moving 12-month averages

**Table 12. Unit value index, exports 2020=100**

Products by Activity (CPA2015)	October 2023:10	Change 2023:10/ 2023:09	Change 2023:10/ 2022:10	Effect* 2023:10/ 2022:10	Mean** 2022:11- 2023:10	Change 2022:11-2023:10/ 2021:11-2022:10	Weights 2022 %
Total exports	135,1	-0,1	-6,3	-6,30	137,4	-0,7	1000,0
01 Products of agriculture and hunting	118,1	2,7	1,2	0,00	136,7	12,4	5,4
10 Food products	129,3	3,2	-6,6	-0,09	131,1	6,5	19,7
11 Beverages	116,4	-2,3	2,6	0,00	116,3	7,7	3,0
13 Textiles	118,6	0,2	-0,8	-0,01	117,9	6,0	4,5
14 Wearing apparel	124,4	-2,9	-1,1	-0,01	118,3	5,9	4,3
15 Leather and related products	126,1	3,3	2,8	0,00	122,4	7,2	2,6
16 Wood and wood products	121,8	1,1	-15,2	-0,61	127,4	-20,9	48,9
171 Pulp, paper and paperboard	132,8	0,4	-20,7	-2,24	146,7	4,1	124,3
172 Articles of paper and paperboard	127,0	0,5	-10,2	-0,03	133,1	7,0	4,5
19 Coke and refined petroleum products	212,2	-7,8	-24,9	-1,95	215,7	-8,0	82,0
20 Chemicals and chemical products	135,8	0,4	-7,8	-0,52	137,4	-7,3	95,3
21 Basic pharmaceutical products and preparations	163,7	6,3	26,4	0,28	163,3	11,7	16,0
22 Rubber and plastic products	133,5	0,6	-3,2	-0,06	131,2	6,8	23,3
23 Other non-metallic mineral products	127,1	-1,6	3,1	0,01	125,2	10,4	8,3
241 Basic iron and steel and ferro-alloys	150,5	0,9	-12,6	-0,73	159,8	-10,1	70,4
244 Basic precious and other non-ferrous metals	144,2	-0,3	-11,3	-0,60	154,5	-6,2	74,2
25 Fabricated metal products	115,8	0,3	-1,3	-0,02	118,5	5,1	19,7
26 Computer, electronic and optical products	109,5	-2,8	-0,9	-0,03	110,1	2,3	53,8
27 Electrical equipment	120,7	6,2	13,9	0,44	113,0	13,1	63,1
28 Machinery and equipment	126,0	0,1	10,4	0,77	121,1	9,0	123,9
29 Motor vehicles and trailers	113,8	1,4	14,4	0,41	109,4	7,4	44,7
38 Waste collection, treatment and disposal services	186,4	20,9	10,3	0,00	171,2	-1,2	0,3
58 Publishing services	131,6	12,9	-8,4	-0,01	123,8	8,4	0,6

\*Effect of change

\*\* Moving 12-month averages

**Table 13. Unit value index, imports 2020=100**

Products by Activity (CPA2015)	October 2023:10	Change	Change	Effect*	Mean** 2022:11- 2023:10	Change	Weights 2022
		% 2023:10/ 2023:09	% 2023:10/ 2022:10	pp 2023:10/ 2022:10		% 2022:11-2023:10/ 2021:11-2022:10	
Total imports	134,9	0,8	-8,5	-8,5	137,9	-4,1	1000
01 Products of agriculture and hunting	121,8	4,5	-5,1	-0,05	125,1	-1,1	17,7
061 Crude petroleum	243,8	-1,1	-10,8	-0,49	223,9	-13,7	74,8
062 Natural gas	682,1	28,1	-45	-2,62	638,9	-18,7	16,5
07 Metal ores	113,4	-8,7	-13,5	-0,28	128,7	-13,3	33,9
10 Food products	140,6	-1,2	6,6	0,14	141	16,1	43,5
13 Textiles	121,6	0,3	-0,7	-0,01	122,5	4,2	8,7
14 Wearing apparel	117,6	3,2	-1,8	-0,02	113,6	3,6	18,1
15 Leather and related products	117,9	1,5	0	-0,01	112,9	2,1	6,5
16 Wood and wood products	136,7	-1,3	-14,6	-0,1	144,3	2,7	8,7
19 Coke and refined petroleum products	204,7	-1,6	-20,7	-0,83	218,2	-6,9	58,6
20 Chemicals and chemical products	119,4	3,5	-14,6	-0,64	123,9	-13,8	84,8
21 Basic pharmaceutical products and preparations	128,3	13,7	4,6	0,06	118,6	-3,8	27,4
22 Rubber and plastic products	127,1	-0,2	-0,3	-0,01	127,2	5,6	26,2
23 Other non-metallic mineral products	128	-0,8	1,5	0	132,1	11,4	13,1
241 Basic iron and steel and ferro-alloys	143,2	-3,7	-24,8	-0,34	162,1	-14,4	24,2
244 Basic precious and other non-ferrous metals	132,9	-2,8	-18	-0,37	152	-11,3	45,3
25 Fabricated metal products	131	4,9	2,4	0,03	128,3	4,6	34
26 Computer, electronic and optical products	117,5	2,2	-0,1	-0,01	114,3	2,8	78,4
27 Electrical equipment	113	-0,6	-3,7	-0,1	114,3	2,7	58,5
28 Machinery and equipment	115,9	-2,1	0,8	0,03	116,8	6,8	89,5
29 Motor vehicles and trailers	120,5	2,2	6,6	0,26	117,9	6,5	76,5
35 Electricity, gas, steam and air conditioning	91,6	2,1	-78,8	-3,14	267,3	-43,1	32,5
38 Waste collection, treatment and disposal services	209,9	7,1	22,7	0	188,1	14,9	0,3

\*Effect of change

\*\* Moving 12-month averages



Monthly statistics on the international trade in goods, October 2023  
2023:K10EN, 29.12.2023

Inquiries:

Kaarna, Anssi tel. +358 40 332 8153  
Riikonen, Johanna tel. +358 40 332 1824  
E-mail: forename.surname@tulli.fi

The preliminary statistics and monthly statistics on the international trade for November 2023 will be published on the following dates:

Preliminary statistics 2023:E11 8.1.2024  
Monthly statistics 2023:K11 29.1.2024

More specific data on countries and goods, as well as statistics on logistics, are available free of charge via the the Uljas statistical database (ULJAS) [uljas.tulli.fi](https://uljas.tulli.fi)

ISSN 1796-0479 = Official Statistics of Finland (pdf)

ISSN 2342-2335 = Monthly statistics on the international trade in goods (online)

Contact information:

Finnish Customs  
Statistics

Opastinsilta 12  
PO Box 512  
FI-00101 Helsinki

Exchange + 358 295 5200  
Statistics service + 358 295 52335  
[statistics@tulli.fi](mailto:statistics@tulli.fi)