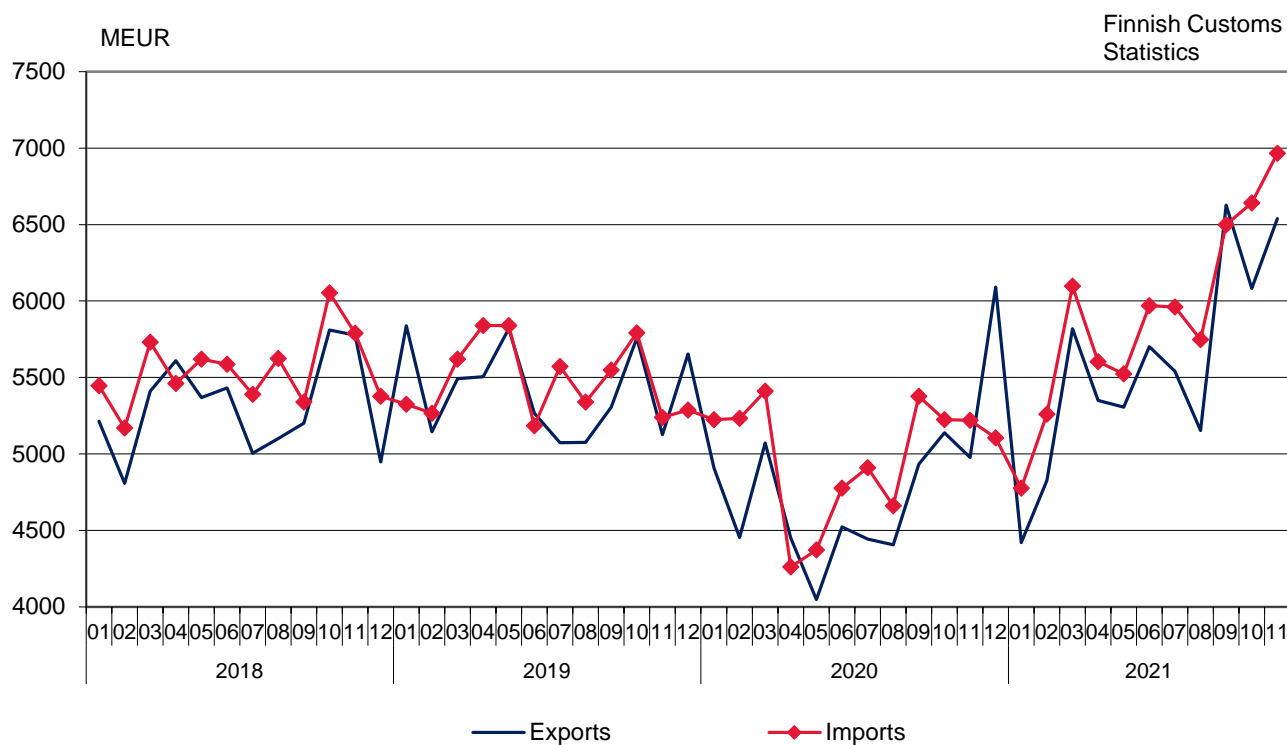


Monthly statistics on the international trade in goods

November 2021

Figure 1. Exports and imports of Finland 2018 – 2021



Helsinki 31.1.2022. Free for publication at 9.00 a.m.

Quoting is encouraged provided Finnish Customs is acknowledged as the source.

Import prices increased more than export prices in November

The value of Finnish exports of goods increased by 31.3 per cent year-on-year in November, according to the international trade in goods statistics provided by Finnish Customs. The value of Finnish exports was EUR 6.5 billion. Export volume increased by 10.7 per cent and export prices by 19.3 per cent year-on-year. The value of imports increased by 33.5 per cent in November to EUR 7.0 billion. Import prices increased by 20.5 per cent and import volume by 12.6 per cent compared to November 2020. In January-November, the aggregated value of exports increased by 19.5 per cent and the value of imports by 19.0 per cent compared with the corresponding period last year.

In November 2021, the trade balance showed a deficit of EUR 428 million. In January-November 2021, the trade balance had an aggregated deficit of EUR 3.7 billion. The deficit was EUR 370 million higher than in the corresponding period last year. The aggregate trade surplus by commodity group for forest industry products increased in January-November compared with the corresponding period in 2020. The trade balance surplus in industrial machinery and equipment decreased from a year ago, but the trade balance surplus in metals increased. Trade balance deficit increased in the trade in ores and scrap metal and electrical machinery and equipment, but decreased in the trade in transport equipment in January-November compared to same period the previous year.

The terms of trade weakened in November compared to the corresponding month of 2020 as import prices increased more than export prices. The point figure in November was 96.8, while it was 97.8 in November 2020. The terms of trade weakened also from October 2021.

The value of exports of capital goods increased by 8.1 per cent in November and the value of exports of industrial supplies by 42.8 per cent year-on-year. The value of exports of fuels and lubricants increased by 112.5 per cent. The value of exports of consumer goods rose by 7.5 per cent and the value of exports of food and beverages by 6.3 per cent. The value of exports of transport equipment and parts rose by 19.9 per cent.

The value of imports of industrial supplies increased by 43.5 per cent in November, and the value of imports of capital goods rose by 14.4 per cent year-on-year. The value of imports of transport equipment and parts increased by 7.5 per cent. The value of imports of fuels and lubricants rose by 147.0 per cent. The value of imports of food and beverages increased by 14.4 per cent and the value of imports of consumer goods by 5.4 per cent.

Exports to EU countries rose by 34.5 per cent and exports to non-EU countries by 27.3 per cent in November. Imports from EU countries rose by 26.0 per cent and imports from non-EU countries by 44.6 per cent in November. In January-November, exports to EU countries increased by 20.3 per cent and exports to non-EU countries by 18.4 per cent. During the same period, imports from EU countries increased by 17.0 per cent and from non-EU countries by 21.9 per cent.

Table 1. Total development (e million)

	November		Change %	January-November		Change %
	2020	2021		2020	2021	
Exports (fob)	4 978	6 539	31,3	51 350	61 362	19,5
Imports (cif)	5 219	6 967	33,5	54 664	65 046	19,0
Trade balance	-241	-428		-3 315	-3 685	

Table 2. International trade indexes

	November		Change %		Average *	Change %
	2020:11	2021:11	2021:11/ 2021:10	2021:11/ 2020:11		
Volume index						
Exports	98,9	109,5	7,9	10,7	100,3	8,0
Imports	102,0	114,9	2,1	12,6	102,8	4,9
Unit value index						
Exports	113,7	135,6	0,2	19,3	126,2	9,9
Imports	116,2	140,1	2,5	20,5	129,8	11,6

* Moving 12-month averages

Table 3. Trade balance (EUR million) in combined SITC commodity groups in January–November 2020 and 2021

	Trade balance 2020 (01-11)	Trade balance 2021 (01-11)	Share of exports % 2021 (01-11)*	Share of imports % 2021 (01-11)*
Food, beverages (SITC 0, 1)	-2 616	-2 662	2,6	6,5
Products of mechanical forest industry (SITC 24, 63)	1 378	2 479	5,6	1,5
Products of chemical forest industry (SITC 25, 64)	6 594	7 792	13,7	1,0
Metalliferous ores and metal scrap (SITC 28)	-1 980	-2 891	3,3	7,5
Petroleum and products (SITC 33)	-1 135	-2 097	6,0	8,9
Other energy products (SITC 32, 34,35)	-927	-1 919	1,0	3,8
Chemicals and related products, nes (SITC 5)	-837	-526	11,2	11,3
Metals and metal products (SITC 67, 68, 69)	2 724	3 296	14,1	8,2
Industrial machinery and equipment (SITC 71, 72, 73, 74)	2 999	2 510	15,0	10,3
Electrical machinery and equipment (SITC 75, 76, 77)	-3 147	-3 450	7,4	12,3
Transport equipment (SITC 78, 79)	-1 734	-1 543	7,6	9,5
Furniture and parts thereof (SITC 82)	-539	-568	0,3	1,2
Textiles, apparel and clothing accs, footwear (SITC 65, 85, 84)	-1 745	-1 664	1,0	3,5
Instruments and apparatuses, nes (SITC 87)	928	918	3,5	1,9
Other goods	-3 279	-3 360	7,8	12,5
Total	-3 315	-3 685	100,0	100,0

* Share of total imports / exports

Figure 3. Volume index 2018–2021
2010 = 100

Finnish Customs
Statistics

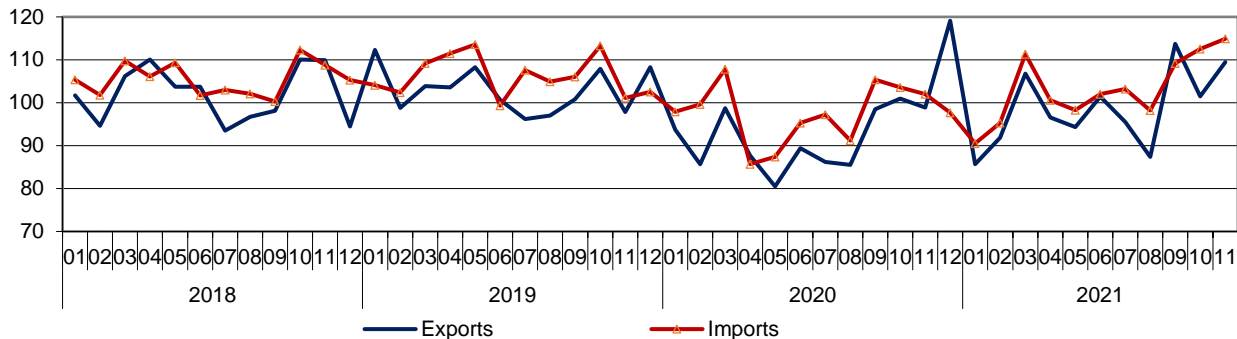


Figure 4. Unit value index and Terms of trade 2018–2021
2010 = 100

Finnish Customs
Statistics

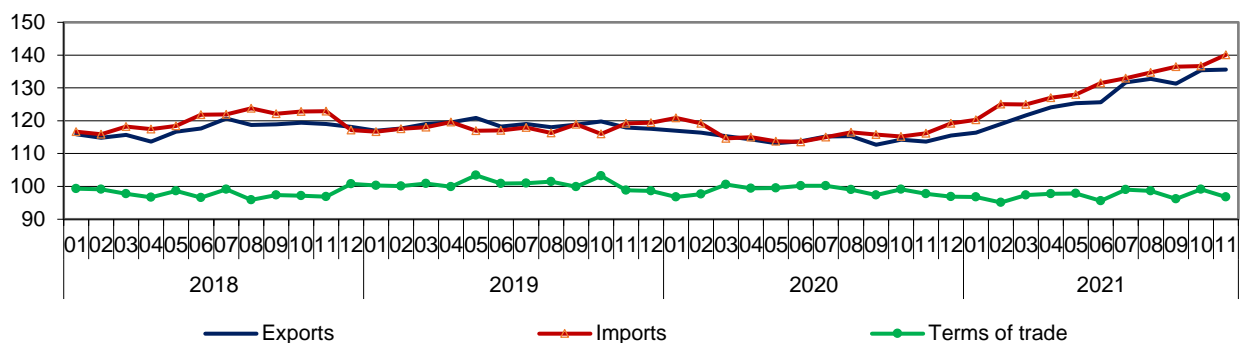


Figure 5. Exports by Products by Activity (CPA) 2018 – 2021

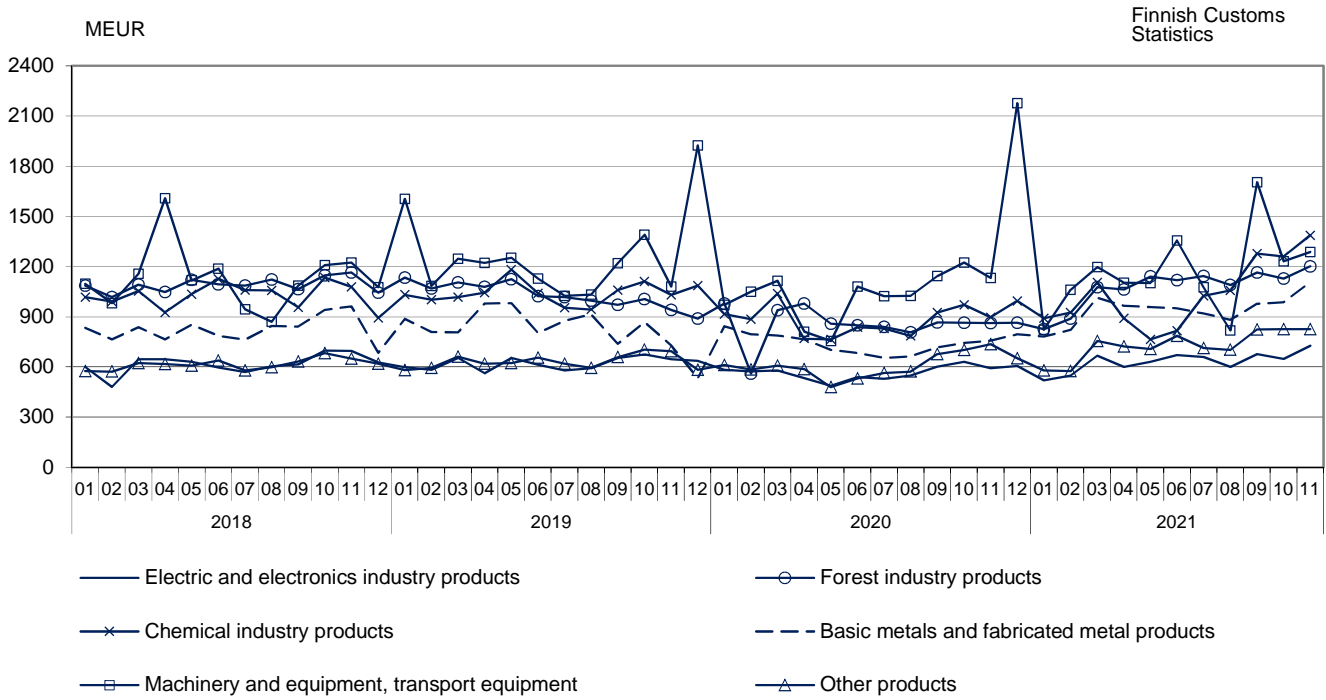


Figure 6. Imports by broad economic categories (BEC) 2018 – 2021

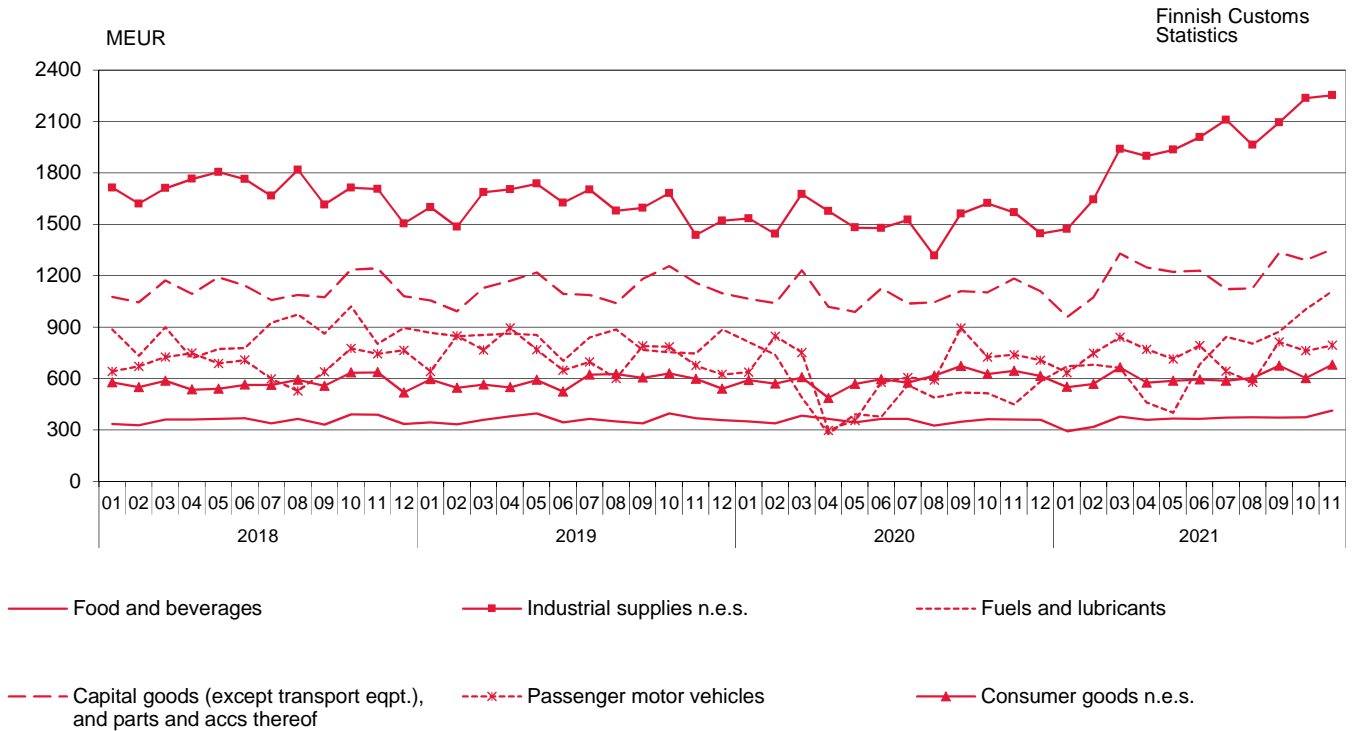


Figure 7. Volume index of Exports by months 2018–2021
2010 = 100

Finnish Customs
Statistics

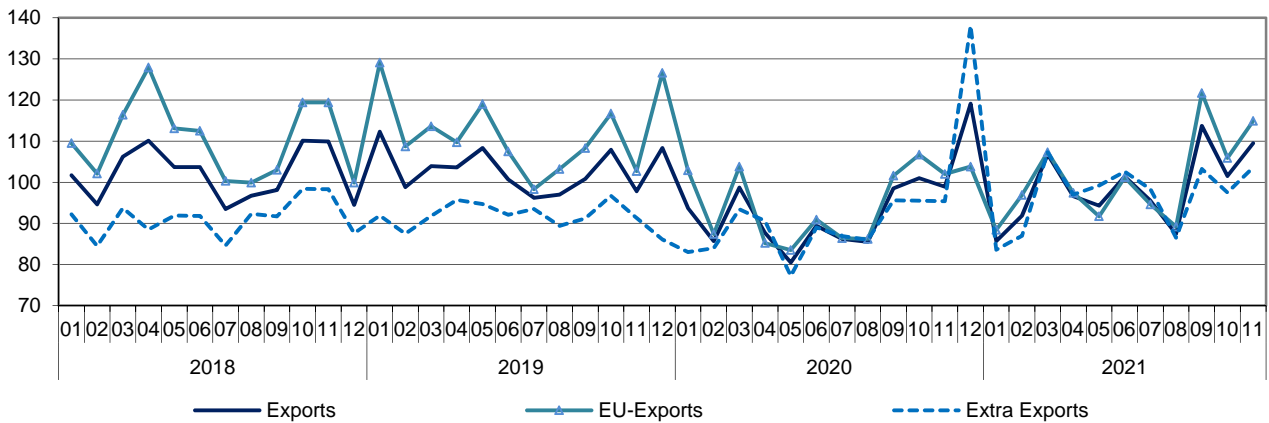


Figure 8. Volume index of Imports by months 2018–2021
2010 = 100

Finnish Customs
Statistics

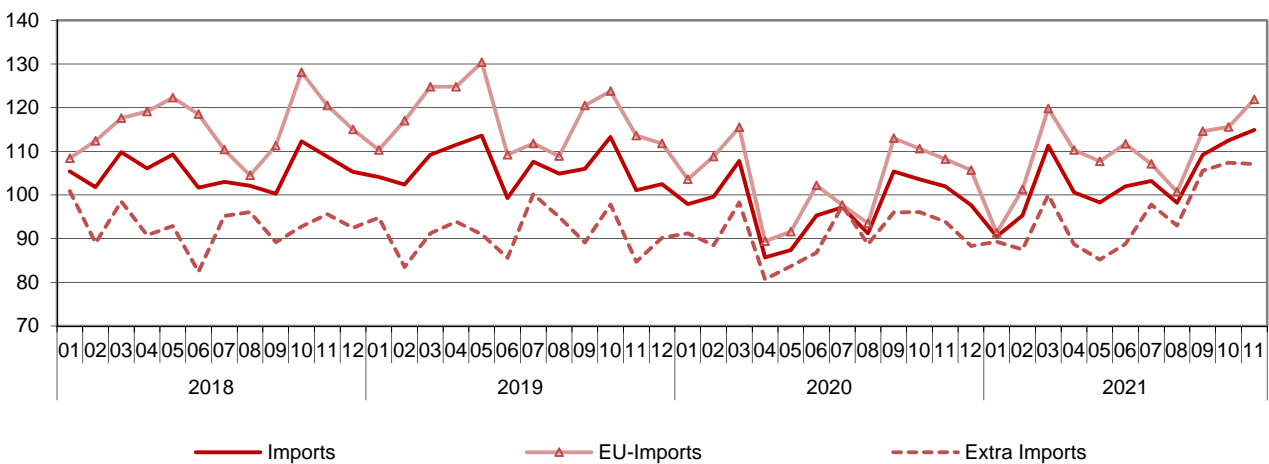


Figure 9. Unit value index of Exports by months 2018–2021
2010 = 100

Finnish Customs
Statistics

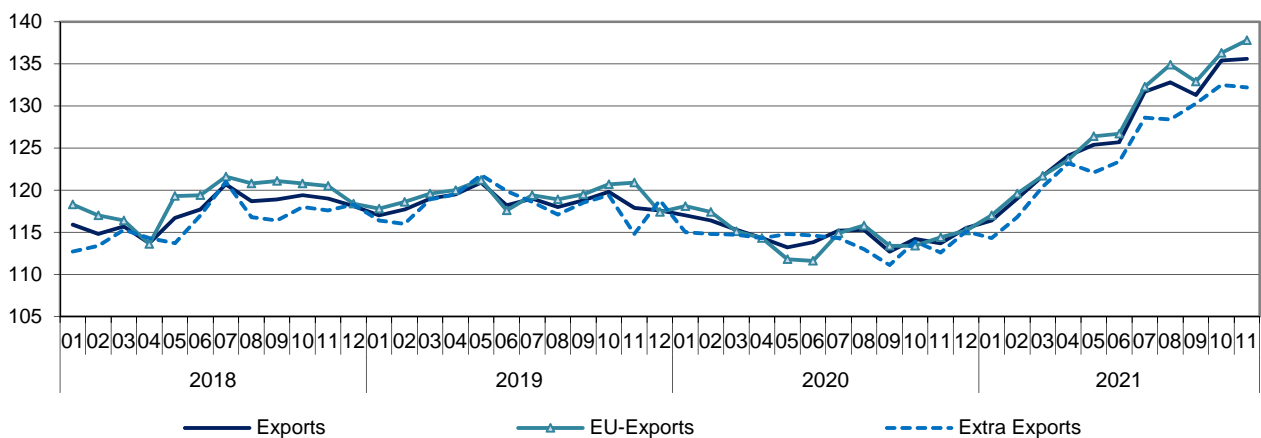


Figure 10. Unit value index of Imports by months 2018–2021
2010 = 100

Finnish Customs
Statistics

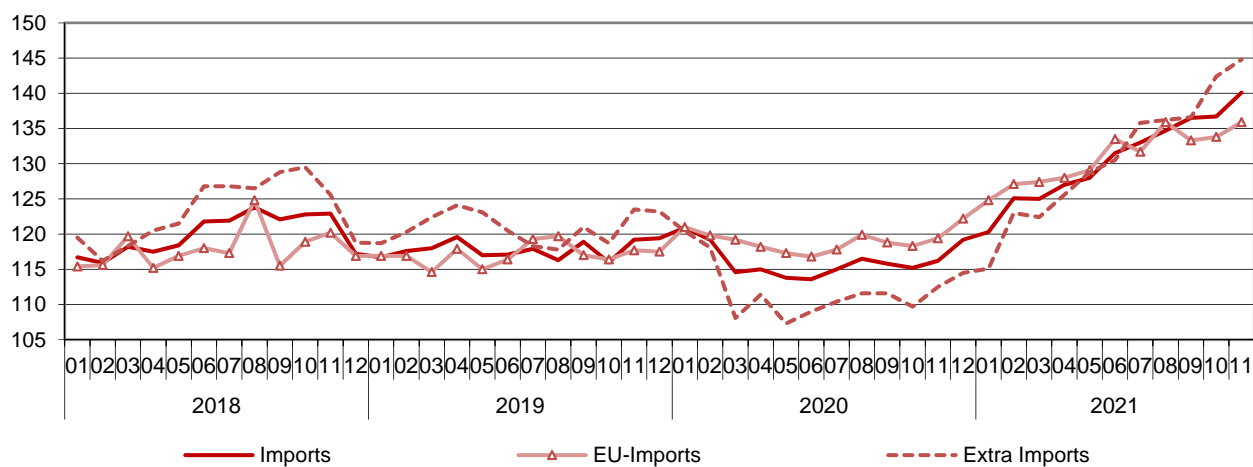


Table 4. International trade indexes

	November		Change %		Average *	Change %
	2020:11	2021:11	2021:11/ 2021:10	2021:11/ 2020:11		
Volume index						
Exports	98,9	109,5	7,9	10,7	100,3	8,0
EU-Exports	102,0	114,9	8,5	12,6	101,1	4,3
Extra Exports	95,4	103,6	6,2	8,6	100,3	13,3
Imports	102,0	114,9	2,1	12,6	102,8	4,9
EU-Imports	108,2	121,9	5,5	12,7	109,0	5,0
Extra Imports	93,9	107,1	-0,3	14,0	94,9	4,3
Unit value index						
Exports	113,7	135,6	0,2	19,3	126,2	9,9
EU-Exports	114,4	137,8	1,0	20,4	127,0	10,7
Extra Exports	112,6	132,2	-0,2	17,4	124,0	8,4
Imports	116,2	140,1	2,5	20,5	129,8	11,6
EU-Imports	119,4	135,9	1,6	13,9	130,2	9,7
Extra Imports	112,5	144,8	1,7	28,7	129,6	15,0
Terms of Trade	97,8	96,8	-2,2	-1,0	97,3	-1,6

* Moving 12-month averages

Table 5. Exports by SITC

SITC Rev.4		November 2021			January-November 2021		
		value MEUR	share %	change %	value MEUR	share %	change %
	Total exports	6 539	100,0	31,3	61 362	100,0	19,5
0	Food and live animals	138	2,1	5,0	1 416	2,3	-1,1
02	Dairy products and birds' eggs	34	0,5	-7,5	406	0,7	-2,2
05	Vegetables and fruit	5	0,1	2,2	57	0,1	16,4
1	Beverages and tobacco	18	0,3	25,8	162	0,3	18,7
2	Crude materials, inedible, except fuels	713	10,9	33,8	7 413	12,1	48,2
212	Furskins, raw	1	0,0	-86,0	351	0,6	139,0
24	Cork and wood	286	4,4	58,3	2 522	4,1	61,9
248	Wood, simply worked	273	4,2	59,1	2 431	4,0	66,4
25	Pulp and waste paper	201	3,1	32,9	2 331	3,8	36,1
28	Metalliferous ores and metal scrap	206	3,2	16,3	2 009	3,3	43,2
3	Mineral fuels etc	637	9,7	113,9	4 275	7,0	19,1
33	Petroleum and products	554	8,5	109,7	3 690	6,0	10,4
4	Animal, vegetable oil, fat	2	0,0	27,8	23	0,0	72,5
5	Chemicals and related products, nes	746	11,4	33,2	6 846	11,2	22,9
51+52	Organic and inorganic chemicals	198	3,0	47,1	1 789	2,9	11,8
54	Medicinal, pharm. products	89	1,4	-12,0	911	1,5	17,3
57+58	Plastics in primary and non-primary forms	206	3,1	46,4	2 108	3,4	38,0
6	Basic manufactures	1 782	27,3	43,4	16 923	27,6	21,9
63	Wood and cork manufactures	115	1,8	68,2	916	1,5	35,5
634	Plywood, particle board etc	64	1,0	30,3	584	1,0	26,4
64	Paper, paperboard and articles thereof	603	9,2	29,9	6 098	9,9	10,8
65	Textile yarn, fabrics, made up articles, etc	27	0,4	11,3	292	0,5	8,5
67	Iron and steel	534	8,2	77,2	4 765	7,8	42,0
68	Non-ferrous metals	280	4,3	37,4	2 718	4,4	16,8
69	Manufactures of metals, nes	119	1,8	24,1	1 154	1,9	20,7
7	Machinery, transport equipmt	1 861	28,5	15,8	18 421	30,0	12,0
71	Power generating machinery and equipment	145	2,2	10,8	1 690	2,8	-7,4
72	Machinery for special industries	451	6,9	11,3	4 597	7,5	10,9
74	General industrl machy, nes	256	3,9	15,5	2 680	4,4	0,4
75	Office machines and adp machines	40	0,6	22,7	376	0,6	34,7
76	Telecomm, sound recording equipment	86	1,3	10,8	818	1,3	15,1
77	Electric machinery, nes and parts	363	5,6	28,4	3 369	5,5	18,9
78	Road vehicles	470	7,2	12,4	3 755	6,1	14,3
79	Other transport equipment	26	0,4	18,0	905	1,5	82,9
793	Ships and boats etc	20	0,3	11,9	421	0,7	48,8
8	Miscellaneous manufactured articles	415	6,3	7,3	3 849	6,3	8,9
82	Furniture and parts thereof	29	0,4	91,5	205	0,3	28,3
84	Articles of apparel and clothing accessories	19	0,3	-1,2	217	0,4	-8,5
85	Footwear	10	0,2	17,7	100	0,2	11,1
87	Instruments and apparatuses, nes	220	3,4	-8,4	2 125	3,5	3,6
9	Goods not classified elsewhere	228	3,5	11,3	2 033	3,3	16,4

Table 6. Imports by SITC

SITC Rev.4		November 2021			January-November 2021		
		value MEUR	share %	change %	value MEUR	share %	change %
	Total imports	6 967	100,0	33,5	65 046	100,0	19,0
0	Food and live animals	386	5,5	16,0	3 737	5,7	1,7
02	Dairy products and birds' eggs	31	0,4	5,5	355	0,5	-0,1
05	Vegetables and fruit	92	1,3	5,8	986	1,5	0,0
1	Beverages and tobacco	63	0,9	-12,6	503	0,8	-1,6
2	Crude materials, inedible, except fuels	608	8,7	16,4	6 413	9,9	36,0
212	Furskins, raw	10	0,1	60,1	173	0,3	51,0
24	Cork and wood	57	0,8	17,9	638	1,0	9,2
248	Wood, simply worked	15	0,2	50,2	168	0,3	37,7
25	Pulp and waste paper	9	0,1	167,7	91	0,1	-17,4
28	Metalliferous ores and metal scrap	466	6,7	10,2	4 900	7,5	44,9
3	Mineral fuels etc	1 107	15,9	148,8	8 291	12,7	46,7
33	Petroleum and products	750	10,8	124,3	5 787	8,9	29,2
4	Animal, vegetable oil, fat	45	0,6	31,2	387	0,6	12,2
5	Chemicals and related products, nes	784	11,3	33,0	7 373	11,3	15,1
51+52	Organic and inorganic chemicals	213	3,1	63,1	1 819	2,8	35,4
54	Medicinal, pharm. products	201	2,9	3,3	2 073	3,2	7,5
57+58	Plastics in primary and non-primary forms	170	2,4	54,3	1 619	2,5	23,0
6	Basic manufactures	875	12,6	54,9	8 221	12,6	23,7
63	Wood and cork manufactures	34	0,5	55,4	321	0,5	18,2
634	Plywood, particle board etc	19	0,3	72,3	170	0,3	22,5
64	Paper, paperboard and articles thereof	58	0,8	26,2	546	0,8	7,0
65	Textile yarn, fabrics, made up articles, etc	62	0,9	-11,5	669	1,0	-11,6
67	Iron and steel	215	3,1	104,6	1 908	2,9	33,8
68	Non-ferrous metals	165	2,4	103,5	1 321	2,0	53,5
69	Manufactures of metals, nes	201	2,9	43,0	2 112	3,2	29,7
7	Machinery, transport equipmt	2 127	30,5	14,3	20 904	32,1	14,1
71	Power generating machinery and equipment	155	2,2	32,5	1 741	2,7	29,1
72	Machinery for special industries	162	2,3	17,9	1 703	2,6	7,8
74	General industrial machinery, nes	296	4,2	15,6	3 045	4,7	11,6
75	Office machines and adp machines	151	2,2	1,3	1 595	2,5	16,6
76	Telecomm, sound recording equipment	267	3,8	0,5	2 078	3,2	2,9
77	Electric machinery, nes and parts	495	7,1	43,6	4 339	6,7	21,1
78	Road vehicles	560	8,0	1,8	5 772	8,9	19,4
79	Other transport equipment	22	0,3	-5,0	430	0,7	-36,7
793	Ships and boats etc	3	0,0	45,6	165	0,3	103,7
8	Miscellaneous manufactured articles	607	8,7	15,8	5 961	9,2	6,9
82	Furniture and parts thereof	85	1,2	21,9	773	1,2	10,6
84	Articles of apparel and clothing accessories	114	1,6	4,5	1 332	2,0	1,6
85	Footwear	24	0,3	25,4	272	0,4	-0,3
87	Instruments and apparatus, nes	125	1,8	10,5	1 207	1,9	7,6
9	Goods not classified elsewhere	365	5,2	34,0	3 258	5,0	15,7

Table 7. Exports and imports by Products by Activity (CPA2008)

Products by Activity		Exports 2021				Imports 2021			
		November		January-November		November		January-November	
		value MEUR	value MEUR	share %	change %	value MEUR	value MEUR	share %	change %
Total exports / imports		6 539	61 362	100,0	19,5	6 967	65 046	100	19,0
A	Products of agriculture, forestry and fishing	43	696	1,1	33,4	171	1 773	2,7	6,8
B	Products from mining and quarrying	111	943	1,5	63,9	883	7 072	10,9	38,4
061	Crude petroleum	0	0	0,0	-83,9	486	3 257	5	19,2
C	Manufactured goods	6 094	57 286	93,4	18,3	5 205	50 194	77,2	15,3
10-12	Food, beverages and tobacco	129	1 371	2,2	3,8	352	3 394	5,2	-2,9
13-15	Textiles, clothes, leather and leather products	59	646	1,1	2,4	201	2 114	3,3	-9,1
16-18	Forest industry products	1 202	11 843	19,3	25,9	137	1 351	2,1	8,2
16	Wood and wood products	399	3 429	5,6	55,7	68	697	1,1	13,9
17	Paper, paper and paperboard products, pulp	803	8 413	13,7	16,8	68	650	1	2,9
19-22	Chemical industry products	1 387	11 402	18,6	18,5	1 231	11 980	18,4	25,0
19	Coke and petroleum products	513	3 388	5,5	8,4	272	2 624	4	48,0
20	Chemicals and chemical products	624	5 481	8,9	26,3	568	5 247	8,1	25,0
21	Pharmaceutical products and pharmaceutical preparations	95	998	1,6	15,6	203	2 098	3,2	7,3
22	Rubber and plastic products	155	1 535	2,5	18,4	187	2 011	3,1	21,3
23	Other non-metallic mineral products	54	554	0,9	20,0	82	813	1,3	6,7
24-25	Metal and metal products	1 107	10 368	16,9	27,7	722	6 541	10,1	30,9
24	Basic metals	973	8 989	14,6	30,3	514	4 341	6,7	32,7
25	Fabricated metal products (excl. machinery and equipment)	134	1 379	2,2	13,1	208	2 200	3,4	27,5
26-27	Electric and electronics industry products	727	6 960	11,3	12,2	1 048	9 235	14,2	13,8
26	Computers, electronic and optical products	347	3 291	5,4	14,4	643	5 542	8,5	12,8
263	Communication equipment	69	680	1,1	15,1	178	1 438	2,2	2,7
27	Electrical equipment	380	3 669	6,0	10,2	405	3 693	5,7	15,3
28	Machinery and equipment	795	8 136	13,3	7,5	547	5 870	9	15,0
29-30	Transport equipment	493	4 628	7,5	22,9	679	6 987	10,7	12,5
29	Motor vehicles	455	3 553	5,8	12,9	628	6 198	9,5	19,2
30	Other transport equipment	38	1 074	1,8	73,9	51	790	1,2	-21,8
31-33	Other manufactured goods	140	1 378	2,2	5,4	207	1 907	2,9	11,9
D	Electricity, gas, steam, air conditioning *	63	480	0,8	160,6	172	1 323	2	142,8
E-X	Other products	228	1 956	3,2	18,1	536	4 684	7,2	23,2
E 381158	Metal waste	65	570	0,9	35,8	152	1 290	2	50,7

* Natural gas B 062

Table 8. Imports and exports by BEC goods classification (Broad Economic Categories)

BEC Rev.4		November 2021			January-November 2021		
		value MEUR	share %	change %	value MEUR	share %	change %
	Total imports	6 967	100,0	33,5	65 046	100,0	19,0
1	Food and beverages	413	5,9	14,4	3 989	6,1	1,9
2	Industrial supplies not elsewhere specified	2 253	32,3	43,5	21 556	33,1	28,4
3	Fuels and lubricants	1 110	15,9	147,0	8 195	12,6	45,7
31	Primary	662	9,5	155,6	4 198	6,5	30,0
32	Processed	448	6,4	135,2	3 997	6,1	67,0
4	Capital goods (except transport equipment), and parts and accessories thereof	1 354	19,4	14,4	13 295	20,4	11,2
5	Transport equipment and parts and accessories thereof	794	11,4	7,5	8 094	12,4	15,2
6	Consumer goods not elsewhere specified	681	9,8	5,4	6 696	10,3	2,0
61	Durable	174	2,5	18,2	1 511	2,3	11,9
62	Semi-durable	236	3,4	6,7	2 444	3,8	-4,3
63	Non-durable	272	3,9	-2,3	2 740	4,2	3,1
7	Goods not elsewhere specified	361	5,2	33,6	3 222	5,0	15,3
	Total exports	6 539	100,0	31,3	61 362	100,0	19,5
1	Food and beverages	142	2,2	6,3	1 430	2,3	0,8
2	Industrial supplies not elsewhere specified	3 349	51,2	42,8	31 854	51,9	27,8
3	Fuels and lubricants	614	9,4	112,5	4 110	6,7	17,7
31	Primary	3	0,0	85,1	28	0,0	87,2
32	Processed	611	9,3	112,6	4 082	6,7	17,4
4	Capital goods (except transport equipment), and parts and accessories thereof	1 462	22,4	8,1	14 986	24,4	6,1
5	Transport equipment and parts and accessories thereof	614	9,4	19,9	5 640	9,2	26,7
6	Consumer goods not elsewhere specified	221	3,4	7,5	2 118	3,5	13,7
61	Durable	38	0,6	56,1	326	0,5	37,8
62	Semi-durable	76	1,2	8,2	764	1,2	6,1
63	Non-durable	107	1,6	-3,6	1 028	1,7	13,4
7	Goods not elsewhere specified	137	2,1	-2,4	1 223	2,0	14,6

Table 10. Volume index, exports 2010=100

Products by Activity (CPA2008)	November 2021:11	Change 2021:11/ 2021:10	Change 2021:11/ 2020:11	Effect* 2021:11/ 2020:11	Mean** 2020:12- 2021:11	Change 2020:12-2021:11/ 2019:12-2020:11	Weights 2020
Total exports	109,5	7,9	10,7	10,70	100,3	8,0	1000,0
01 Products of agriculture and hunting	31,4	-57,9	-47,6	-0,18	98,6	19,7	6,2
10 Food products	98,3	-5,3	-3,7	-0,08	98,8	0,5	22,1
11 Beverages	131,1	2,6	21,0	0,06	104,4	7,3	2,8
13 Textiles	100,8	2,2	1,2	0,00	104,7	7,6	5,2
14 Wearing apparel	76,9	-23,5	-3,4	-0,02	81,6	-7,5	4,4
15 Leather and related products	80,7	-14,0	9,1	0,01	75,9	7,5	2,3
16 Wood and wood products	151,6	10,1	9,4	0,53	131,9	15,7	42,2
171 Pulp, paper and paperboard	85,8	3,9	3,4	0,25	89,5	5,0	132,6
172 Articles of paper and paperboard	83,6	-3,3	2,5	0,00	75,9	0,7	4,4
19 Coke and refined petroleum products	134,7	25,4	50,9	2,82	89,5	-11,8	61,1
20 Chemicals and chemical products	125,5	10,6	9,8	0,89	108,2	3,5	83,4
21 Basic pharmaceutical products and preparations	114,4	5,8	-5,4	-0,10	102,3	35,6	16,1
22 Rubber and plastic products	122,7	0,1	14,2	0,35	114,4	9,0	24,4
23 Other non-metallic mineral products	102,9	0,8	-2,9	-0,03	97,1	17,1	8,8
241 Basic iron and steel and ferro-alloys	135,9	3,7	18,5	0,81	128,5	18,5	56,2
244 Basic precious and other non-ferrous metals	131,5	17,7	6,2	0,33	126,2	3,2	66,6
25 Fabricated metal products	136,0	1,5	3,0	0,08	140,0	11,1	21,6
26 Computer, electronic and optical products	66,5	7,6	3,2	0,11	59,9	10,4	55,6
27 Electrical equipment	104,2	18,2	42,0	1,85	85,7	3,5	62,5
28 Machinery and equipment	116,7	0,5	8,0	1,19	111,2	9,5	144,3
29 Motor vehicles and trailers	265,1	12,6	11,9	1,67	192,6	8,1	61,1
38 Waste collection, treatment and disposal services	184,4	12,6	16,0	0,20	136,5	-5,8	8,6
58 Publishing services	16,3	21,4	4,6	0,00	13,8	-18,8	0,5

*Effect of change

** Moving 12-month averages

Table 11. Volume index, imports 2010=100

Products by Activity (CPA2008)	November 2021:11	Change 2021:11/ 2021:10	Change 2021:11/ 2020:11	Effect* 2021:11/ 2020:11	Mean** 2020:12- 2021:11	Change 2020:12-2021:11/ 2019:12-2020:11	Weights 2020
Total imports	114,9	2,1	12,6	12,60	102,8	4,9	1000,0
01 Products of agriculture and hunting	120,8	8,7	0,2	0,00	126,8	-1,9	21,1
061 Crude petroleum	73,5	-10,2	40,9	0,83	58,6	-21,9	50,1
07 Metal ores	69,2	-36,9	-45,2	-1,36	91,9	16,3	30,5
10 Food products	101,4	7,2	1,1	0,04	92,6	-7,8	54,2
13 Textiles	100,9	6,0	-14,1	-0,18	97,5	-13,1	13,8
14 Wearing apparel	73,9	-11,3	9,7	0,11	71,0	-16,4	21,3
15 Leather and related products	73,9	-8,1	24,9	0,08	71,5	-9,8	6,8
16 Wood and wood products	99,6	-6,6	15,8	0,11	98,8	-0,1	11,1
19 Coke and refined petroleum products	99,0	3,2	2,5	0,06	103,8	1,5	32,5
20 Chemicals and chemical products	121,1	7,1	20,9	1,27	108,2	5,8	76,5
21 Basic pharmaceutical products and preparations	148,5	11,4	-8,2	-0,37	141,0	1,7	35,6
22 Rubber and plastic products	131,0	-4,5	15,7	0,42	130,9	15,0	30,2
23 Other non-metallic mineral products	126,4	6,0	27,5	0,30	115,4	5,5	14,0
241 Basic iron and steel and ferro-alloys	137,4	-10,3	42,3	0,52	128,6	5,5	17,5
244 Basic precious and other non-ferrous metals	107,1	2,9	7,4	0,16	83,3	-11,7	32,0
25 Fabricated metal products	140,7	3,6	33,3	0,86	132,8	12,8	30,8
26 Computer, electronic and optical products	108,8	12,8	8,0	0,58	89,6	8,7	90,9
27 Electrical equipment	160,6	2,2	26,3	1,53	137,0	12,2	58,5
28 Machinery and equipment	148,5	-2,2	26,7	2,31	138,9	17,6	92,5
29 Motor vehicles and trailers	130,7	5,1	-2,5	-0,27	118,1	8,1	97,4
35 Electricity, gas, steam and air conditioning Waste collection, treatment	270,3	55,8	100,1	1,23	218,3	71,0	10,5
38 and disposal services	154,9	2,7	27,0	0,43	137,7	4,3	16,6

*Effect of change

** Moving 12-month averages

Table 12. Unit value index, exports 2010=100

Products by Activity (CPA2008)	November 2021:11	Change 2021:11/ 2021:10	Change 2021:11/ 2020:11	Effect* 2021:11/ 2020:11	Mean** 2020:12- 2021:11	Change 2020:12-2021:11/ 2019:12-2020:11	Weights 2020
Total exports	135,6	0,2	19,3	19,30	126,2	9,9	1000,0
01 Products of agriculture and hunting	76,0	4,0	13,6	0,05	79,3	15,1	6,2
10 Food products	127,8	1,1	7,3	0,17	123,2	2,5	22,1
11 Beverages	109,1	-1,9	2,8	0,00	108,0	0,7	2,8
13 Textiles	119,1	4,5	10,2	0,05	111,1	2,5	5,2
14 Wearing apparel	126,8	-2,8	1,4	0,00	128,2	1,2	4,4
15 Leather and related products	134,7	1,2	5,7	0,01	126,9	5,4	2,3
16 Wood and wood products	154,1	-1,9	48,9	1,95	134,0	32,7	42,2
171 Pulp, paper and paperboard	128,9	2,6	26,9	3,39	116,3	9,4	132,6
172 Articles of paper and paperboard	133,6	3,0	14,8	0,06	124,5	3,8	4,4
19 Coke and refined petroleum products	118,8	-4,9	37,0	1,89	106,5	16,3	61,1
20 Chemicals and chemical products	151,2	-1,6	34,7	2,95	137,1	20,1	83,4
21 Basic pharmaceutical products and preparations	87,9	-5,1	-1,8	-0,03	91,5	-15,4	16,1
22 Rubber and plastic products	123,4	1,0	13,0	0,31	115,4	7,9	24,4
23 Other non-metallic mineral products	121,7	1,5	8,2	0,07	118,4	3,0	8,8
241 Basic iron and steel and ferro-alloys	124,2	2,6	47,8	2,07	105,7	20,3	56,2
244 Basic precious and other non-ferrous metals	155,6	2,4	23,2	1,74	143,4	20,5	66,6
25 Fabricated metal products	100,5	-2,3	1,4	0,02	95,3	-0,7	21,6
26 Computer, electronic and optical products	139,3	2,5	9,5	0,61	132,5	1,9	55,6
27 Electrical equipment	122,6	-2,7	-0,8	-0,06	124,4	1,7	62,5
28 Machinery and equipment	122,5	3,9	6,3	0,95	117,8	1,3	144,3
29 Motor vehicles and trailers	155,4	0,1	-0,7	-0,07	152,1	1,0	61,1
38 Waste collection, treatment and disposal services	155,6	-2,7	47,8	0,38	151,9	45,1	8,6
58 Publishing services	71,9	8,4	-20,8	-0,02	76,1	-21,0	0,5

*Effect of change

** Moving 12-month averages

Table 13. Unit value index, imports 2010=100

Products by Activity (CPA2008)	November 2021:11	Change	Change	Effect*	Mean** 2020:12- 2021:11	Change	Weights 2020
		% 2021:11/ 2021:10	% 2021:11/ 2020:11	pp 2021:11/ 2020:11		% 2020:12-2021:11/ 2019:12-2020:11	
Total imports	140,1	2,5	20,5	20,5	129,8	11,6	1000
01 Products of agriculture and hunting	121	1,5	17,5	0,36	111,8	6,9	21,1
061 Crude petroleum	146,4	-1,5	74	3,27	120,7	43	50,1
062 Natural gas	126,6	1,3	63,4	0,24	104,4	34,2	4,6
07 Metal ores	190,5	13,7	53,2	1,94	166,5	30,3	30,5
10 Food products	133,4	0,7	8,1	0,52	129	4,1	54,2
13 Textiles	129,6	0,8	11	0,16	125,3	6,9	13,8
14 Wearing apparel	135,7	3,4	3,4	0,09	125,3	1,5	21,3
15 Leather and related products	141,6	-0,7	2,5	0,02	134,4	3,4	6,8
16 Wood and wood products	145,1	3,1	25,3	0,31	129,6	12,3	11,1
19 Coke and refined petroleum products	143,1	11	97	2,35	114,4	35,5	32,5
20 Chemicals and chemical products	142,7	2,5	29,5	2,45	127,2	14,7	76,5
21 Basic pharmaceutical products and preparations	95	5,7	15,3	0,43	92,7	8,3	35,6
22 Rubber and plastic products	131,5	1,4	12,1	0,41	124,2	5,7	30,2
23 Other non-metallic mineral products	129,8	0,6	6,8	0,11	124,2	1,5	14
241 Basic iron and steel and ferro-alloys	143,9	2,1	68,2	1	115,2	29,7	17,5
244 Basic precious and other non-ferrous metals	259,2	3,8	52,7	2,72	231,8	45,9	32
25 Fabricated metal products	141,2	1,6	9,6	0,37	130,4	2,6	30,8
26 Computer, electronic and optical products	141,7	3,5	6,6	0,78	130,9	0,9	90,9
27 Electrical equipment	121,9	3,1	7,5	0,48	114,7	3,3	58,5
28 Machinery and equipment	123,8	-2,9	3,7	0,4	122,3	4	92,5
29 Motor vehicles and trailers	155,1	1,1	4,2	0,59	151,5	4,5	97,4
35 Electricity, gas, steam and air conditioning	110,7	1,2	101,9	0,63	92,5	43	10,5
38 Waste collection, treatment and disposal services	104,4	5,5	59,8	0,63	87,8	40,7	16,6

*Effect of change

** Moving 12-month averages

Monthly statistics on the international trade in goods, November 2021
2021:K11EN, 31.1.2022

Inquiries:

Riikonen, Johanna

tel. +358 40 332 1824

Kaarna, Anssi

tel. +358 40 332 8153

E-mail: forename.surname@tulli.fi

The preliminary statistics and monthly statistics on the international trade for December 2021 will be published on the following dates:

Preliminary statistics 2021:E12 7.2.2022

Monthly statistics 2021:K12 28.2.2022

More specific data on countries and goods, as well as statistics on logistics, are available free of charge via the the Uljas statistical database (ULJAS) uljas.tulli.fi

ISSN 1796-0479 = Official Statistics of Finland (pdf)

ISSN 2342-2335 = Monthly statistics on the international trade in goods (online)

Contact information:

Finnish Customs
Statistics

Opastinsilta 12
PO Box 512
FI-00101 Helsinki

Exchange + 358 295 5200
Statistics service + 358 295 52335
statistics@tulli.fi