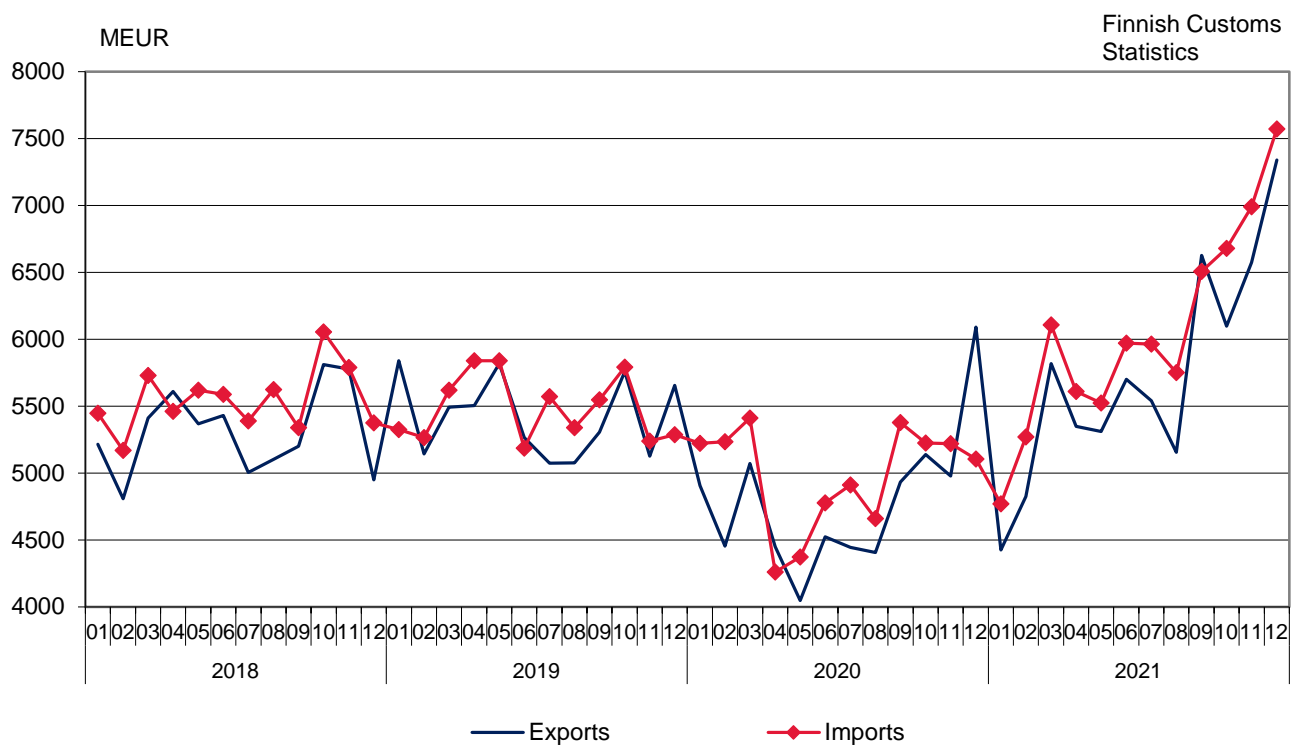


Monthly statistics on the international trade in goods

December 2021

Figure 1. Exports and imports of Finland 2018 – 2021



Helsinki 28.2.2022. Free for publication at 9.00 a.m.

Quoting is encouraged provided Finnish Customs is acknowledged as the source.

Export volume decreased, export prices increased in December

The value of Finnish exports of goods increased by 20.5 per cent year-on-year in December, according to the international trade in goods statistics provided by Finnish Customs. The value of Finnish exports was EUR 7.3 billion. Export volume decreased by 5.7 per cent, but export prices increased by 28.5 per cent year-on-year. The value of imports increased by 48.4 per cent in December to EUR 7.6 billion. Import prices increased by 34.2 per cent and import volume by 11.8 per cent compared to December 2020. In January-December, the aggregated value of exports increased by 19.7 per cent and the value of imports by 21.6 per cent compared with the corresponding period last year.

In December 2021, the trade balance showed a deficit of EUR 232 million. In January-December 2021, the trade balance had an aggregated deficit of EUR 3.9 billion. The deficit was EUR 1.6 billion larger than in the corresponding period last year. The aggregate trade surplus by commodity group for forest industry products increased in January-December compared with the corresponding period in 2020. The trade surplus in industrial machinery and equipment decreased from a year ago, but the trade surplus in metals increased. Trade deficit increased in the trade in ores and scrap metal, energy products and electrical machinery and equipment in January-December compared to same period the previous year.

The terms of trade weakened in December compared to the corresponding month of 2020 as import prices increased more than export prices. The point figure in December was 92.7, while it was 96.9 in December 2020. The terms of trade weakened also from November 2021.

The value of exports of capital goods rose by 8.5 per cent in December and the value of exports of industrial supplies by 35.3 per cent year-on-year. The value of exports of fuels and lubricants increased by 16.6 per cent. The value of exports of consumer goods rose by 61.5 per cent and the value of exports of food and beverages by 13.3 per cent. The value of exports of transport equipment and parts rose by 7.7 per cent.

The value of imports of industrial supplies increased by 65.1 per cent in December, and the value of imports of capital goods rose by 26.9 per cent year-on-year. The value of imports of transport equipment and parts decreased by 49.3 per cent. The value of imports of fuels and lubricants rose by 127.3 per cent. The value of imports of food and beverages increased by 14.3 per cent, but the value of imports of consumer goods decreased by 0.1 per cent.

Exports to EU countries rose by 60.0 per cent, but exports to non-EU countries fell by 14.8 per cent in December. Imports from EU countries rose by 33.1 per cent and imports from non-EU countries by 72.2 per cent in December. In January-December, total exports to EU countries increased by 24.1 per cent and exports to non-EU countries by 14.4 per cent. During the same period, imports from EU countries increased by 18.5 per cent and from non-EU countries by 26.2 per cent.

Table 1. Total development (e million)

	December		Change %	January-December		Change %
	2020	2021		2020	2021	
Exports (fob)	6 090	7 340	20,5	57 440	68 761	19,7
Imports (cif)	5 104	7 572	48,4	59 768	72 707	21,6
Trade balance	986	-232		-2 328	-3 945	

Table 2. International trade indexes

	December		Change %		Average *	Change %
	2020:12	2021:12	2021:12/ 2021:11	2021:12/ 2020:12		
Volume index						
Exports	119,1	112,3	2,6	-5,7	99,7	6,4
Imports	97,7	109,3	-4,9	11,8	103,8	6,4
Unit value index						
Exports	115,5	148,4	9,4	28,5	129,0	12,4
Imports	119,2	160,1	14,3	34,2	133,2	14,5

* Moving 12-month averages

Figure 2. Trade balance (EUR million) in combined SITC commodity groups in January-December 2020 and 2021

Finnish
Customs
Statistics

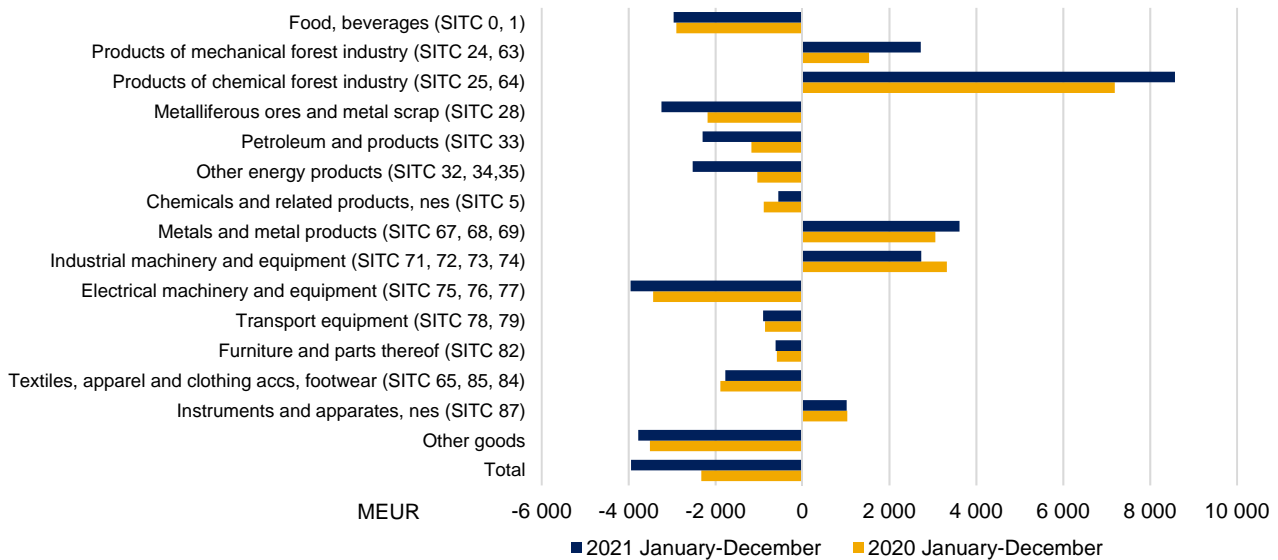


Table 3. Trade balance (EUR million) in combined SITC commodity groups in January-December 2020 and 2021

	Trade balance 2020 (01-12)	Trade balance 2021 (01-12)	Share of exports % 2021 (01-12)*	Share of imports % 2021 (01-12)*
Food, beverages (SITC 0, 1)	-2 900	-2 963	2,5	6,5
Products of mechanical forest industry (SITC 24, 63)	1 532	2 725	5,5	1,4
Products of chemical forest industry (SITC 25, 64)	7 188	8 573	13,5	1,0
Metalliferous ores and metal scrap (SITC 28)	-2 182	-3 244	3,3	7,6
Petroleum and products (SITC 33)	-1 172	-2 298	6,0	8,8
Other energy products (SITC 32, 34,35)	-1 038	-2 524	1,0	4,4
Chemicals and related products, nes (SITC 5)	-889	-554	11,1	11,2
Metals and metal products (SITC 67, 68, 69)	3 058	3 614	13,8	8,1
Industrial machinery and equipment (SITC 71, 72, 73, 74)	3 324	2 735	14,7	10,1
Electrical machinery and equipment (SITC 75, 76, 77)	-3 437	-3 954	7,3	12,4
Transport equipment (SITC 78, 79)	-860	-904	9,0	9,8
Furniture and parts thereof (SITC 82)	-587	-619	0,3	1,2
Textiles, apparel and clothing accs, footwear (SITC 65, 85, 84)	-1 889	-1 773	1,0	3,4
Instruments and apparatuses, nes (SITC 87)	1 032	1 018	3,4	1,9
Other goods	-3 509	-3 778	7,5	12,3
Total	-2 328	-3 945	100,0	100,0

* Share of total imports / exports

Figure 3. Volume index 2018–2021
2010 = 100

Finnish Customs
Statistics

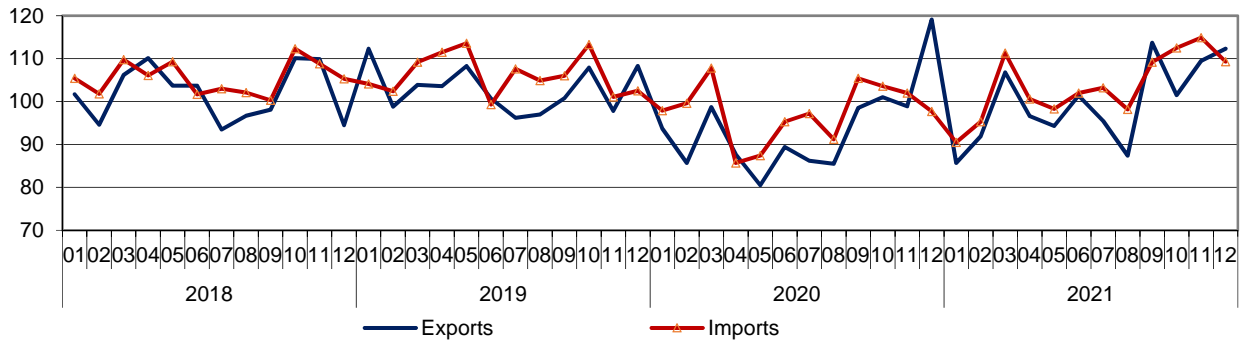


Figure 4. Unit value index and Terms of trade 2018–2021
2010 = 100

Finnish Customs
Statistics

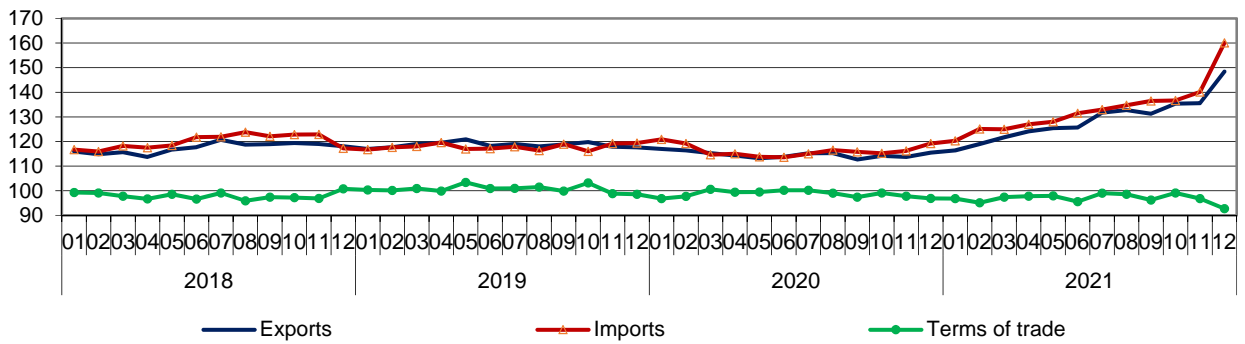


Figure 5. Exports by Products by Activity (CPA) 2018 – 2021

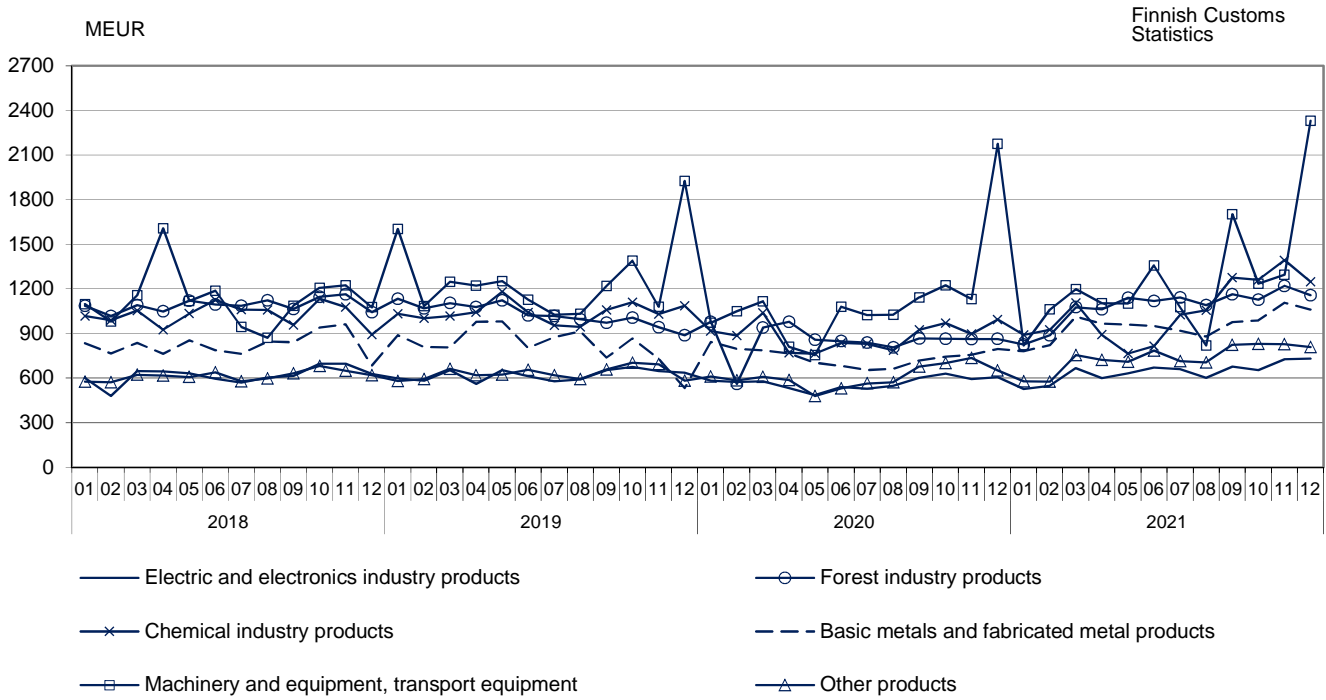


Figure 6. Imports by broad economic categories (BEC) 2018 – 2021

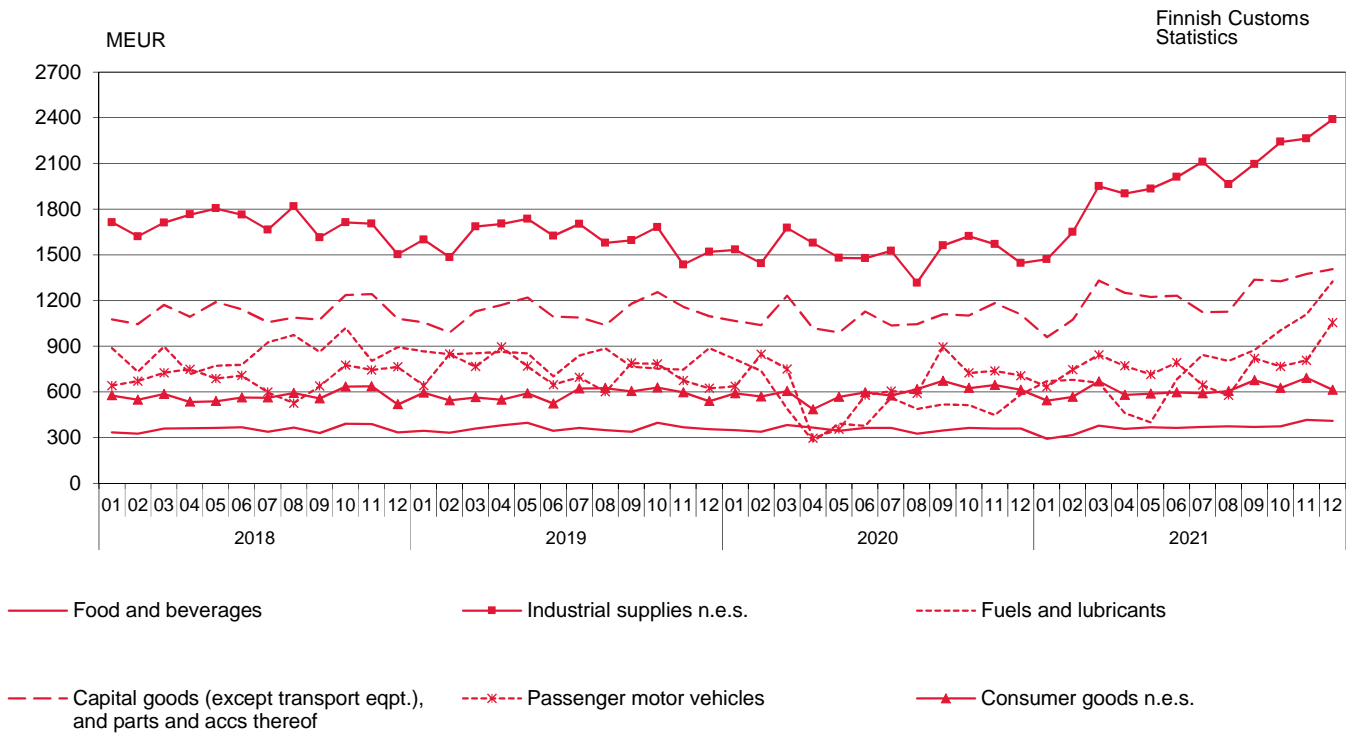


Figure 7. Volume index of Exports by months 2018–2021
2010 = 100

Finnish Customs
Statistics

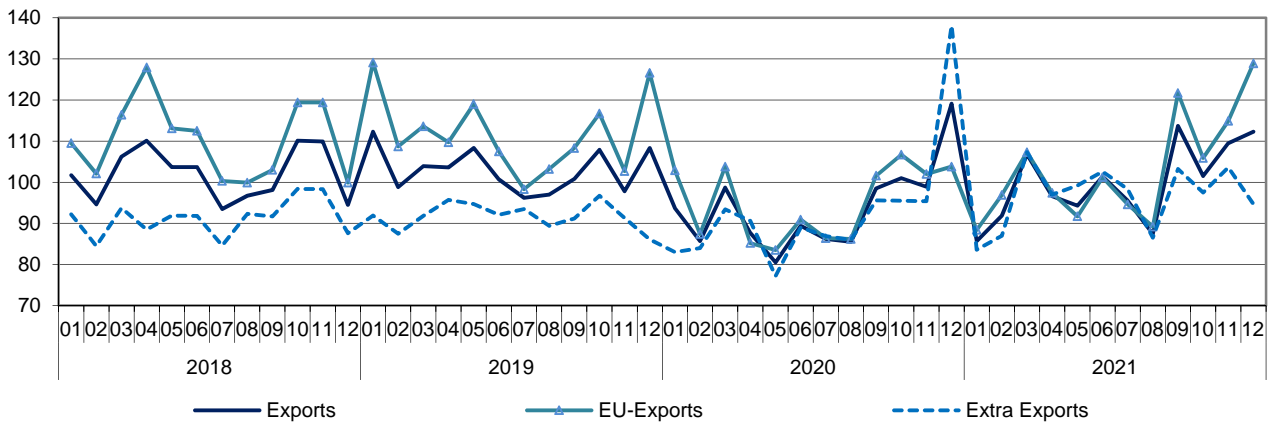


Figure 8. Volume index of Imports by months 2018–2021
2010 = 100

Finnish Customs
Statistics

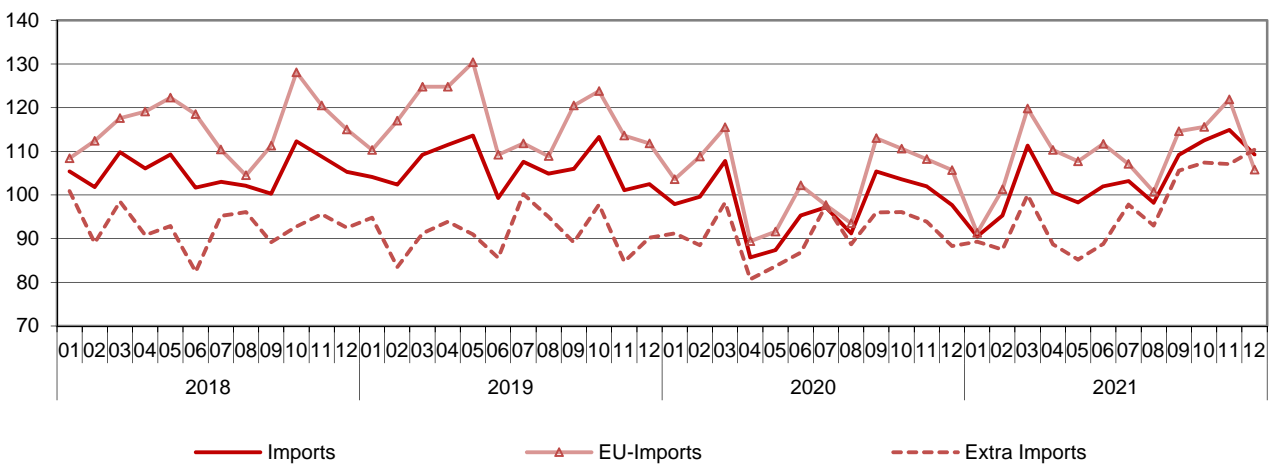


Figure 9. Unit value index of Exports by months 2018–2021
2010 = 100

Finnish Customs
Statistics

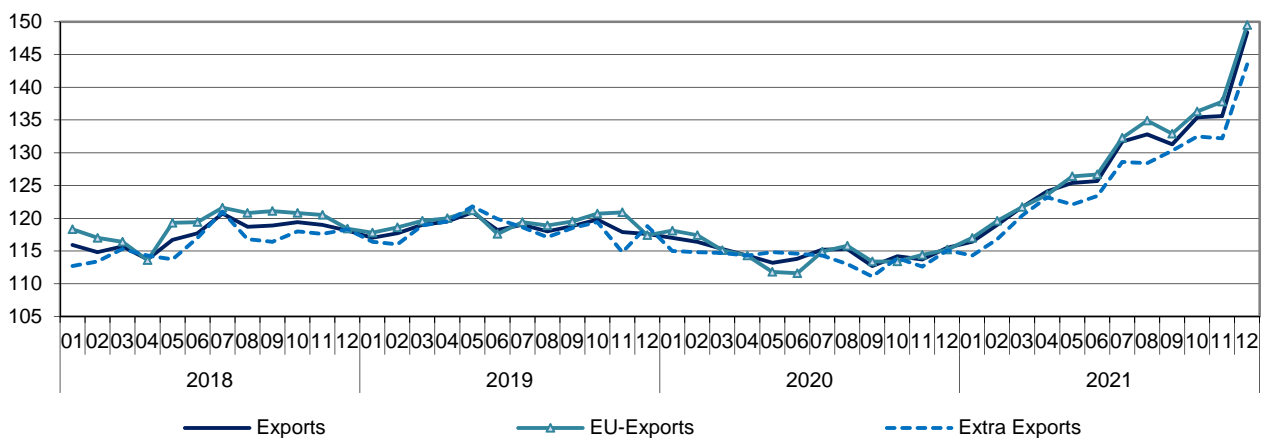


Figure 10. Unit value index of Imports by months 2018–2021
2010 = 100

Finnish Customs
Statistics

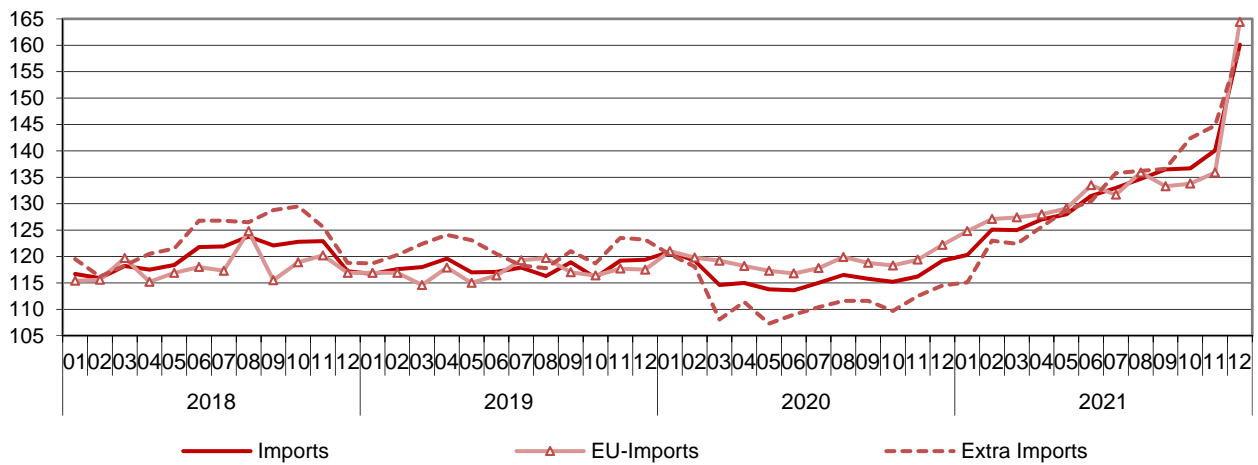


Table 4. International trade indexes

	December		Change %		Average *	Change %
	2020:12	2021:12	2021:12/ 2021:11	2021:12/ 2020:12		
Volume index						
Exports	119,1	112,3	2,6	-5,7	99,7	6,4
EU-Exports	103,8	128,9	12,2	24,2	103,2	8,6
Extra Exports	138,1	94,7	-8,6	-31,4	96,7	4,1
Imports	97,7	109,3	-4,9	11,8	103,8	6,4
EU-Imports	105,7	105,8	-13,3	0,1	109,0	5,5
Extra Imports	88,3	110,4	3,1	25,1	96,7	6,5
Unit value index						
Exports	115,5	148,4	9,4	28,5	129,0	12,4
EU-Exports	115,2	149,5	8,5	29,8	129,9	13,3
Extra Exports	115,1	143,5	8,5	24,6	126,3	10,8
Imports	119,2	160,1	14,3	34,2	133,2	14,5
EU-Imports	122,2	164,4	20,9	34,5	133,7	12,3
Extra Imports	114,5	159,5	10,2	39,3	133,4	19,1
Terms of Trade	96,9	92,7	-4,3	-4,3	96,9	-1,8

* Moving 12-month averages

Table 5. Exports by SITC

SITC Rev.4		December 2021			January-December 2021		
		value MEUR	share %	change %	value MEUR	share %	change %
	Total exports	7 340	100,0	20,5	68 761	100,0	19,7
0	Food and live animals	131	1,8	12,8	1 556	2,3	0,5
02	Dairy products and birds' eggs	32	0,4	-10,0	438	0,6	-2,8
05	Vegetables and fruit	5	0,1	5,9	67	0,1	24,2
1	Beverages and tobacco	15	0,2	55,3	177	0,3	21,1
2	Crude materials, inedible, except fuels	767	10,5	51,8	8 200	11,9	48,8
212	Furskins, raw	8	0,1	-60,5	359	0,5	114,0
24	Cork and wood	239	3,3	45,9	2 761	4,0	60,4
248	Wood, simply worked	226	3,1	49,7	2 658	3,9	64,8
25	Pulp and waste paper	257	3,5	47,4	2 606	3,8	38,1
28	Metalliferous ores and metal scrap	248	3,4	87,9	2 257	3,3	47,1
3	Mineral fuels etc	525	7,1	19,7	4 801	7,0	19,2
33	Petroleum and products	427	5,8	7,3	4 117	6,0	10,0
4	Animal, vegetable oil, fat	2	0,0	19,5	26	0,0	70,0
5	Chemicals and related products, nes	753	10,3	42,6	7 606	11,1	24,8
51+52	Organic and inorganic chemicals	214	2,9	37,5	2 007	2,9	14,3
54	Medicinal, pharm. products	133	1,8	135,4	1 045	1,5	25,4
57+58	Plastics in primary and non-primary forms	190	2,6	48,9	2 299	3,3	38,9
6	Basic manufactures	1 625	22,1	29,5	18 555	27,0	22,6
63	Wood and cork manufactures	91	1,2	54,8	1 007	1,5	37,1
634	Plywood, particle board etc	52	0,7	26,8	636	0,9	26,5
64	Paper, paperboard and articles thereof	576	7,8	21,3	6 676	9,7	11,7
65	Textile yarn, fabrics, made up articles, etc	25	0,3	4,5	317	0,5	8,2
67	Iron and steel	505	6,9	69,7	5 270	7,7	44,3
68	Non-ferrous metals	261	3,6	4,4	2 979	4,3	15,6
69	Manufactures of metals, nes	95	1,3	17,8	1 250	1,8	20,6
7	Machinery, transport equipmt	2 914	39,7	9,7	21 358	31,1	11,8
71	Power generating machinery and equipment	174	2,4	26,4	1 864	2,7	-5,1
72	Machinery for special industries	459	6,3	9,1	5 056	7,4	10,8
74	General industrl machy, nes	246	3,4	4,8	2 932	4,3	1,0
75	Office machines and adp machines	42	0,6	14,6	418	0,6	32,5
76	Telecomm, sound recording equipment	93	1,3	10,3	911	1,3	14,6
77	Electric machinery, nes and parts	343	4,7	25,5	3 725	5,4	19,8
78	Road vehicles	421	5,7	14,5	4 178	6,1	14,4
79	Other transport equipment	1 107	15,1	2,2	2 013	2,9	27,6
793	Ships and boats etc	1 085	14,8	12,5	1 506	2,2	20,8
8	Miscellaneous manufactured articles	402	5,5	10,3	4 270	6,2	9,6
82	Furniture and parts thereof	25	0,3	48,2	230	0,3	30,2
84	Articles of apparel and clothing accessories	20	0,3	9,1	251	0,4	-1,8
85	Footwear	8	0,1	30,4	112	0,2	15,4
87	Instruments and apparates, nes	243	3,3	8,7	2 370	3,4	4,3
9	Goods not classified elsewhere	205	2,8	-4,4	2 214	3,2	12,8

Table 6. Imports by SITC

SITC Rev.4		December 2021			January-December 2021		
		value MEUR	share %	change %	value MEUR	share %	change %
	Total imports	7 572	100,0	48,4	72 707	100,0	21,6
0	Food and live animals	390	5,1	14,2	4 130	5,7	2,9
02	Dairy products and birds' eggs	31	0,4	-0,2	386	0,5	-0,1
05	Vegetables and fruit	101	1,3	6,1	1 089	1,5	0,8
1	Beverages and tobacco	61	0,8	-10,0	566	0,8	-2,2
2	Crude materials, inedible, except fuels	761	10,1	69,7	7 196	9,9	39,4
212	Furskins, raw	60	0,8	311,2	232	0,3	80,4
24	Cork and wood	54	0,7	8,1	693	1,0	9,2
248	Wood, simply worked	12	0,2	23,4	181	0,2	36,7
25	Pulp and waste paper	14	0,2	115,6	105	0,1	-10,1
28	Metalliferous ores and metal scrap	578	7,6	73,3	5 501	7,6	48,0
3	Mineral fuels etc	1 328	17,5	126,4	9 623	13,2	54,3
33	Petroleum and products	625	8,3	43,6	6 415	8,8	30,6
4	Animal, vegetable oil, fat	49	0,6	111,6	436	0,6	18,4
5	Chemicals and related products, nes	774	10,2	33,4	8 160	11,2	16,8
51+52	Organic and inorganic chemicals	216	2,9	58,2	2 035	2,8	37,5
54	Medicinal, pharm. products	208	2,7	13,5	2 280	3,1	7,9
57+58	Plastics in primary and non-primary forms	153	2,0	45,5	1 776	2,4	24,9
6	Basic manufactures	801	10,6	54,6	9 028	12,4	26,0
63	Wood and cork manufactures	29	0,4	53,7	351	0,5	20,8
634	Plywood, particle board etc	15	0,2	66,1	186	0,3	25,5
64	Paper, paperboard and articles thereof	55	0,7	11,4	603	0,8	7,9
65	Textile yarn, fabrics, made up articles, etc	54	0,7	-17,8	723	1,0	-12,2
67	Iron and steel	192	2,5	87,1	2 099	2,9	37,3
68	Non-ferrous metals	126	1,7	117,4	1 442	2,0	57,1
69	Manufactures of metals, nes	229	3,0	71,6	2 345	3,2	33,1
7	Machinery, transport equipmt	2 464	32,5	41,0	23 480	32,3	17,0
71	Power generating machinery and equipment	135	1,8	31,0	1 879	2,6	29,4
72	Machinery for special industries	183	2,4	40,0	1 892	2,6	10,5
74	General industrl machy, nes	323	4,3	35,8	3 382	4,7	14,0
75	Office machines and adp machines	167	2,2	21,0	1 781	2,4	18,3
76	Telecomm, sound recording equipment	245	3,2	11,9	2 344	3,2	4,7
77	Electric machinery, nes and parts	516	6,8	58,0	4 883	6,7	24,9
78	Road vehicles	538	7,1	-2,9	6 332	8,7	17,5
79	Other transport equipment	331	4,4	>999	763	1,0	8,7
793	Ships and boats etc	291	3,8	>999	456	0,6	441,7
8	Miscellaneous manufactured articles	568	7,5	12,7	6 567	9,0	8,0
82	Furniture and parts thereof	75	1,0	15,9	848	1,2	11,2
84	Articles of apparel and clothing accessories	94	1,2	-14,4	1 433	2,0	0,8
85	Footwear	22	0,3	32,4	296	0,4	2,4
87	Instruments and apparatuses, nes	136	1,8	13,4	1 352	1,9	8,9
9	Goods not classified elsewhere	376	5,0	31,5	3 520	4,8	13,5

Table 7. Exports and imports by Products by Activity (CPA2008)

Products by Activity	Exports 2021				Imports 2021			
	December		January-December		December		January-December	
	value MEUR	value MEUR	share %	change %	value MEUR	value MEUR	share %	change %
Total exports / imports	7 340	68 761	100,0	19,7	7 572	72 707	100	21,6
A Products of agriculture, forestry and fishing	52	752	1,1	31,0	226	2 001	2,8	10,2
B Products from mining and quarrying	91	1 036	1,5	62,4	932	8 026	11	42,9
061 Crude petroleum	0	0	0,0	-83,9	368	3 624	5	20,7
C Manufactured goods	6 897	64 263	93,5	18,6	5 469	55 841	76,8	17,5
10-12 Food, beverages and tobacco	118	1 494	2,2	4,5	346	3 742	5,1	-2,3
13-15 Textiles, clothes, leather and leather products	57	721	1,0	5,6	171	2 294	3,2	-8,2
16-18 Forest industry products	1 158	13 021	18,9	26,8	131	1 485	2	9,6
16 Wood and wood products	327	3 756	5,5	55,3	61	759	1	14,7
17 Paper, paper and paperboard products, pulp	831	9 263	13,5	18,0	69	722	1	4,8
19-22 Chemical industry products	1 249	12 658	18,4	19,2	1 192	13 193	18,1	26,4
19 Coke and petroleum products	375	3 763	5,5	7,5	258	2 886	4	49,4
20 Chemicals and chemical products	605	6 087	8,9	27,2	565	5 828	8	27,7
21 Pharmaceutical products and pharmaceutical preparations	141	1 144	1,7	22,7	211	2 307	3,2	7,9
22 Rubber and plastic products	129	1 664	2,4	19,0	158	2 171	3	20,3
23 Other non-metallic mineral products	41	599	0,9	18,8	76	894	1,2	7,4
24-25 Metal and metal products	1 060	11 430	16,6	28,2	752	7 293	10	34,9
24 Basic metals	946	9 935	14,4	31,1	510	4 847	6,7	37,1
25 Fabricated metal products (excl. machinery and equipment)	115	1 495	2,2	12,1	242	2 446	3,4	30,7
26-27 Electric and electronics industry products	731	7 706	11,2	13,1	1 075	10 383	14,3	16,6
26 Computers, electronic and optical products	380	3 676	5,3	15,1	682	6 271	8,6	15,9
263 Communication equipment	75	755	1,1	14,4	177	1 623	2,2	5,1
27 Electrical equipment	351	4 030	5,9	11,3	394	4 112	5,7	17,7
28 Machinery and equipment	801	8 941	13,0	7,9	590	6 482	8,9	17,1
29-30 Transport equipment	1 529	6 162	9,0	18,0	942	7 955	10,9	16,2
29 Motor vehicles	401	3 958	5,8	13,0	587	6 807	9,4	17,3
30 Other transport equipment	1 128	2 204	3,2	28,1	355	1 148	1,6	9,6
31-33 Other manufactured goods	151	1 530	2,2	5,9	194	2 120	2,9	13,2
D Electricity, gas, steam, air conditioning *	87	567	0,8	173,2	407	1 730	2,4	176,7
E-X Other products	213	2 144	3,1	17,2	538	5 109	7	22,0
E 381158 Metal waste	68	638	0,9	38,3	145	1 434	2	53,0

* Natural gas B 062

Table 8. Imports and exports by BEC goods classification (Broad Economic Categories)

BEC Rev.4		December 2021			January-December 2021		
		value MEUR	share %	change %	value MEUR	share %	change %
Total imports		7 572	100,0	48,4	72 707	100,0	21,6
1	Food and beverages	412	5,4	14,3	4 406	6,1	3,1
2	Industrial supplies not elsewhere specified	2 389	31,5	65,1	23 987	33,0	31,5
3	Fuels and lubricants	1 325	17,5	127,3	9 524	13,1	53,5
31	Primary	647	8,6	95,8	4 846	6,7	36,1
32	Processed	677	8,9	168,8	4 678	6,4	76,8
4	Capital goods (except transport equipment), and parts and accessories thereof	1 407	18,6	26,9	14 774	20,3	13,1
5	Transport equipment and parts and accessories thereof	1 055	13,9	49,3	9 176	12,6	18,7
6	Consumer goods not elsewhere specified	614	8,1	-0,1	7 362	10,1	2,6
61	Durable	144	1,9	6,4	1 681	2,3	13,1
62	Semi-durable	210	2,8	7,7	2 669	3,7	-2,9
63	Non-durable	260	3,4	-8,4	3 013	4,1	2,4
7	Goods not elsewhere specified	370	4,9	30,1	3 478	4,8	12,9
Total exports		7 340	100,0	20,5	68 761	100,0	19,7
1	Food and beverages	131	1,8	13,3	1 571	2,3	2,3
2	Industrial supplies not elsewhere specified	3 217	43,8	35,3	35 102	51,0	28,6
3	Fuels and lubricants	490	6,7	16,6	4 601	6,7	17,6
31	Primary	2	0,0	9,9	30	0,0	78,9
32	Processed	488	6,6	16,7	4 571	6,6	17,3
4	Capital goods (except transport equipment), and parts and accessories thereof	1 501	20,5	8,5	16 507	24,0	6,4
5	Transport equipment and parts and accessories thereof	1 633	22,3	7,7	7 280	10,6	22,0
6	Consumer goods not elsewhere specified	242	3,3	61,5	2 378	3,5	18,2
61	Durable	30	0,4	23,4	355	0,5	36,5
62	Semi-durable	72	1,0	14,2	853	1,2	8,9
63	Non-durable	140	1,9	123,8	1 169	1,7	20,7
7	Goods not elsewhere specified	125	1,7	-0,7	1 323	1,9	10,9

Table 9. Trade by regions and countries *

Origin/ destination	Imports 2021				Exports 2021				Trade 2021	
	December	January-December			December	January-December			December	January-December
	value MEUR	value MEUR	share %	change %	value MEUR	value MEUR	share %	change %	value MEUR	value MEUR
Total exports / imports	7 572	72 707	100,0	21,6	7 340	68 761	100	19,7	-232	-3 945
EU	4 137	42 150	58,0	18,5	4 602	38 957	56,7	24,1	464	-3 193
Euro zone	2 636	27 684	38,1	16,5	3 590	27 565	40,1	26,3	954	-118
External trade	3 434	30 556	42,0	26,2	2 738	29 804	43,3	14,4	-696	-752
Developing countries	1 504	12 963	17,8	28,1	991	10 618	15,4	15,2	-514	-2 345
Europe	5 725	55 573	76,4	20,9	5 535	49 785	72,4	22,9	-191	-5 788
EU	4 137	42 150	58,0	18,5	4 602	38 957	56,7	24,1	464	-3 193
AT Austria	72	770	1,1	10,2	37	499	0,7	11,1	-35	-271
BE Belgium	208	1 596	2,2	34,3	231	2 295	3,3	35,9	23	699
BG Bulgaria	8	88	0,1	11,7	18	99	0,1	19,1	10	11
CY Cyprus	0	14	0,0	2,6	1	20	0	15,6	1	6
CZ Czech Republic	91	1 014	1,4	10,3	36	433	0,6	31,6	-55	-581
DE Germany	974	10 820	14,9	14,9	854	9 157	13,3	15,5	-119	-1 663
DK Denmark	136	1 718	2,4	12,6	108	1 230	1,8	24,9	-29	-488
EE Estonia	234	2 395	3,3	16,0	241	2 393	3,5	38,4	8	-3
ES Spain	122	1 589	2,2	24,5	93	1 024	1,5	10,7	-30	-565
FR France	185	1 815	2,5	-5,5	196	2 078	3	14,1	11	263
GR Greece	19	153	0,2	34,3	13	173	0,3	31,7	-5	20
HU Hungary	38	451	0,6	4,4	21	225	0,3	13,9	-16	-226
HR Croatia	3	40	0,1	30,5	2	40	0,1	19,0	-1	1
IE Ireland	69	671	0,9	20,1	140	703	1	144,4	71	32
IT Italy	184	2 006	2,8	16,9	1 145	2 927	4,3	104,7	961	921
LT Lithuania	70	591	0,8	7,2	68	784	1,1	38,5	-2	193
LU Luxembourg	12	91	0,1	35,9	4	37	0,1	32,8	-8	-54
LV Latvia	28	334	0,5	8,3	59	657	1	19,0	31	323
MT Malta	1	10	0,0	47,2	1	29	0	186,8	0	19
NL Netherlands	376	3 880	5,3	24,5	463	4 352	6,3	12,4	87	473
PL Poland	265	2 423	3,3	21,9	167	2 008	2,9	23,9	-97	-415
PT Portugal	41	469	0,6	47,4	19	192	0,3	15,5	-22	-277
RO Romania	27	306	0,4	13,6	14	173	0,3	10,6	-13	-134
SE Sweden	934	8 427	11,6	28,3	632	7 077	10,3	17,0	-301	-1 350
SI Slovenia - Slovenien - Slovenia	14	150	0,2	21,8	7	79	0,1	39,1	-7	-71
SK Slovakia	26	331	0,5	12,9	16	167	0,2	-1,9	-11	-165
Rest of Europe	1 588	13 423	18,5	29,3	933	10 828	15,7	18,8	-655	-2 595
CH Switzerland	55	609	0,8	7,3	100	1 209	1,8	24,4	45	600
GB United Kingdom	131	1 371	1,9	-16,9	195	2 551	3,7	13,3	65	1 179
XI Northern Ireland	2	28	0,0	x	3	49	0,1	x	1	21
IS Iceland	1	20	0,0	41,4	4	49	0,1	3,9	3	30
NO Norway	195	1 694	2,3	18,2	135	1 745	2,5	12,7	-60	50
RU Russia	1 119	8 620	11,9	46,3	356	3 736	5,4	22,6	-763	-4 884
TR Turkey	52	723	1,0	30,9	94	949	1,4	24,1	41	226
UA Ukraine	13	107	0,1	39,7	23	238	0,3	23,8	10	131
North Africa	6	100	0,1	49,1	71	696	1	9,9	65	596
EG Egypt	3	43	0,1	31,7	37	401	0,6	15,5	34	358
MA Morocco	2	38	0,1	69,7	14	117	0,2	-18,2	12	78
Rest of Africa	56	671	0,9	59,0	60	735	1,1	15,6	4	64
ZA South Africa	15	197	0,3	13,5	23	363	0,5	27,8	8	166
Middle East	15	147	0,2	8,2	79	826	1,2	-8,2	63	679
AE Arab Emirates	1	15	0,0	-14,0	16	171	0,2	-9,3	15	156
IL Israel	7	65	0,1	15,6	14	192	0,3	5,2	7	128
SA Saudi Arabia	2	30	0,0	48,6	30	298	0,4	-8,6	28	268
Rest of Asia	1 348	11 299	15,5	25,5	795	8 605	12,5	22,8	-553	-2 694
CN China	850	6 575	9,0	21,7	320	3 619	5,3	19,1	-530	-2 956
HK Hong Kong	5	61	0,1	-20,6	10	131	0,2	10,9	6	70
ID Indonesia	16	190	0,3	24,1	18	231	0,3	51,2	3	41
IN India	33	414	0,6	17,6	57	542	0,8	15,5	25	127
JP Japan	64	775	1,1	9,8	169	1 598	2,3	38,2	105	823
KR South Korea	115	683	0,9	44,4	55	762	1,1	5,3	-60	79
KZ Kazakhstan	1	8	0,0	174,0	10	102	0,1	28,4	9	94
MY Malaysia	36	483	0,7	56,2	10	139	0,2	-16,1	-26	-344
PH Philippines	8	159	0,2	64,7	15	179	0,3	25,0	7	20
SG Singapore	27	248	0,3	117,4	14	182	0,3	-9,3	-13	-67
TH Thailand	32	310	0,4	16,6	12	235	0,3	34,7	-20	-75
TW Taiwan	93	493	0,7	39,8	28	303	0,4	20,0	-64	-189
North America	220	2 837	3,9	9,0	550	5 450	7,9	0,5	330	2 613
CA Canada	37	502	0,7	-6,0	62	805	1,2	49,5	25	303
US USA	183	2 335	3,2	12,9	487	4 642	6,8	-4,8	304	2 307
Middle America	52	561	0,8	32,5	72	551	0,8	28,3	20	-10
MX Mexico	22	348	0,5	31,4	38	326	0,5	25,9	17	-22
South America	104	1 197	1,6	19,4	120	1 348	2	10,5	16	151
AR Argentina	2	14	0,0	8,8	5	78	0,1	4,8	3	64
BR Brazil	49	443	0,6	13,7	50	509	0,7	-10,3	1	67
CL Chile	5	303	0,4	81,6	21	217	0,3	-35,2	16	-87
CO Colombia	5	75	0,1	-19,2	7	120	0,2	128,8	2	44
Oceania	46	323	0,4	95,3	59	766	1,1	10,3	13	443
AU Australia	34	266	0,4	99,9	54	682	1	9,0	20	416

* From the beginning of 2021, the international trade in goods between Northern Ireland and Finland is no longer included in the international trade between Great Britain (GB) and Finland. The details of Northern Ireland are published separately with the country code XI and the details of Great Britain are still published with the country code GB.

Table 10. Volume index, exports 2010=100

Products by Activity (CPA2008)	December 2021:12	Change 2021:12/ 2021:11	Change 2021:12/ 2020:12	Effect* 2021:12/ 2020:12	Mean** 2021:01- 2021:12	Change 2021:01-2021:12/ 2020:01-2020:12	Weights 2020
Total exports	112,3	2,6	-5,7	-5,70	99,7	6,4	1000,0
01 Products of agriculture and hunting	49,6	58,0	-29,0	-0,29	96,9	16,6	6,2
10 Food products	88,3	-10,1	-6,7	-0,32	98,3	-0,8	22,1
11 Beverages	113,4	-13,5	47,7	0,22	107,5	12,3	2,8
13 Textiles	95,9	-4,8	-1,2	-0,02	104,7	5,6	5,2
14 Wearing apparel	79,5	3,3	2,2	0,01	81,8	-8,4	4,4
15 Leather and related products	74,9	-7,1	27,8	0,08	77,2	9,0	2,3
16 Wood and wood products	116,6	-23,0	-2,7	-0,31	131,6	13,9	42,2
171 Pulp, paper and paperboard	88,8	3,5	1,2	1,02	89,5	5,2	132,6
172 Articles of paper and paperboard	77,1	-7,7	5,5	0,13	76,2	1,5	4,4
19 Coke and refined petroleum products	85,7	-36,3	-37,7	-7,33	85,2	-15,2	61,1
20 Chemicals and chemical products	109,7	-12,6	-6,9	-1,53	107,5	1,3	83,4
21 Basic pharmaceutical products and preparations	114,3	-0,1	67,3	1,63	106,2	38,8	16,1
22 Rubber and plastic products	103,3	-15,8	14,9	0,73	115,5	9,0	24,4
23 Other non-metallic mineral products	78,3	-23,8	-5,9	-0,10	96,7	15,0	8,8
241 Basic iron and steel and ferro-alloys	123,1	-9,4	6,3	3,07	129,1	15,1	56,2
244 Basic precious and other non-ferrous metals	117,3	-10,8	-15,9	-10,91	124,3	-1,8	66,6
25 Fabricated metal products	120,2	-11,6	2,4	0,13	140,2	11,5	21,6
26 Computer, electronic and optical products	66,2	-0,5	9,2	0,69	60,4	11,8	55,6
27 Electrical equipment	82,5	-20,8	12,1	1,25	86,5	5,3	62,5
28 Machinery and equipment	117,3	0,5	8,0	2,81	111,9	9,5	144,3
29 Motor vehicles and trailers	224,5	-15,3	7,5	2,17	193,9	7,2	61,1
38 Waste collection, treatment and disposal services	147,7	-19,9	10,5	0,26	137,7	-4,9	8,6
58 Publishing services	8,3	-49,0	-63,6	-0,02	12,5	-23,5	0,5

*Effect of change

** Moving 12-month averages

Table 11. Volume index, imports 2010=100

Products by Activity (CPA2008)	December 2021:12	Change 2021:12/ 2021:11	Change 2021:12/ 2020:12	Effect* pp	Mean** 2021:01- 2021:12	Change 2021:01-2021:12/ 2020:01-2020:12	Weights 2020
Total imports	109,3	-4,9	11,8	11,80	103,8	6,4	1000,0
01 Products of agriculture and hunting	166,4	37,7	24,2	0,68	129,5	2,3	21,1
061 Crude petroleum	64,6	-12,1	-14,4	-0,49	57,7	-20,9	50,1
07 Metal ores	89,3	29,0	25,9	0,55	93,4	20,0	30,5
10 Food products	96,6	-4,7	1,0	0,05	92,7	-7,1	54,2
13 Textiles	82,5	-18,3	-25,3	-0,38	95,2	-17,3	13,8
14 Wearing apparel	60,4	-18,3	-3,2	-0,05	70,9	-15,5	21,3
15 Leather and related products	61,9	-16,2	9,0	0,03	71,9	-7,7	6,8
16 Wood and wood products	85,6	-14,1	-2,7	-0,03	98,6	-0,5	11,1
19 Coke and refined petroleum products	98,0	-1,0	-2,7	-0,09	103,6	2,8	32,5
20 Chemicals and chemical products	108,2	-10,6	12,1	0,89	109,2	6,4	76,5
21 Basic pharmaceutical products and preparations	85,9	-42,2	-40,5	-2,07	136,1	-2,8	35,6
22 Rubber and plastic products	107,6	-17,9	-4,7	-0,16	130,5	12,4	30,2
23 Other non-metallic mineral products	111,0	-12,2	0,4	0,00	115,4	4,2	14,0
241 Basic iron and steel and ferro-alloys	108,1	-21,3	10,1	0,15	129,4	6,6	17,5
244 Basic precious and other non-ferrous metals	108,1	1,0	44,9	0,92	86,1	-6,4	32,0
25 Fabricated metal products	160,5	14,0	51,9	1,69	137,4	21,2	30,8
26 Computer, electronic and optical products	111,2	2,1	22,3	1,84	91,3	10,5	90,9
27 Electrical equipment	154,8	-3,6	30,9	2,11	140,0	14,0	58,5
28 Machinery and equipment	148,6	0,1	27,5	2,97	141,5	20,0	92,5
29 Motor vehicles and trailers	118,8	-9,1	-8,4	-1,06	117,2	6,1	97,4
35 Electricity, gas, steam and air conditioning Waste collection, treatment	198,1	-26,7	14,5	0,27	220,3	69,2	10,5
38 and disposal services	145,4	-6,2	16,5	0,34	139,4	4,8	16,6

*Effect of change

** Moving 12-month averages

Table 12. Unit value index, exports 2010=100

Products by Activity (CPA2008)	December 2021:12	Change 2021:12/ 2021:11	Change 2021:12/ 2020:12	Effect* 2021:12/ 2020:12	Mean** 2021:01- 2021:12	Change 2021:01-2021:12/ 2020:01-2020:12	Weights 2020
Total exports	148,4	9,4	28,5	28,50	129,0	12,4	1000,0
01 Products of agriculture and hunting	84,6	11,2	14,2	0,06	80,2	16,5	6,2
10 Food products	130,9	2,4	10,2	0,24	124,2	3,3	22,1
11 Beverages	109,0	0,0	0,8	0,00	108,1	0,8	2,8
13 Textiles	114,3	-4,0	5,9	0,02	111,7	3,1	5,2
14 Wearing apparel	132,9	4,9	4,1	0,02	128,6	1,7	4,4
15 Leather and related products	134,6	-0,1	7,3	0,01	127,7	5,8	2,3
16 Wood and wood products	164,2	6,6	55,9	2,26	138,9	36,7	42,2
171 Pulp, paper and paperboard	129,5	0,4	27,1	3,35	118,6	12,2	132,6
172 Articles of paper and paperboard	134,0	0,3	14,7	0,06	125,9	5,4	4,4
19 Coke and refined petroleum products	136,3	14,7	60,4	2,93	110,8	23,2	61,1
20 Chemicals and chemical products	167,7	10,9	45,6	3,97	141,5	24,5	83,4
21 Basic pharmaceutical products and preparations	130,5	48,5	36,0	0,49	94,3	-10,5	16,1
22 Rubber and plastic products	121,8	-1,3	11,8	0,28	116,5	8,9	24,4
23 Other non-metallic mineral products	122,7	0,8	4,8	0,04	118,9	3,4	8,8
241 Basic iron and steel and ferro-alloys	134,8	8,6	58,2	2,52	109,9	26,3	56,2
244 Basic precious and other non-ferrous metals	177,6	14,2	36,2	2,81	147,3	22,9	66,6
25 Fabricated metal products	101,4	0,9	3,3	0,06	95,6	-0,8	21,6
26 Computer, electronic and optical products	153,4	10,1	11,5	0,80	133,8	2,8	55,6
27 Electrical equipment	143,0	16,6	16,4	1,14	126,1	3,3	62,5
28 Machinery and equipment	122,8	0,2	3,9	0,60	118,2	1,5	144,3
29 Motor vehicles and trailers	161,4	3,9	4,8	0,41	152,7	1,1	61,1
38 Waste collection, treatment and disposal services	185,8	19,4	51,3	0,48	157,1	47,8	8,6
58 Publishing services	104,2	44,9	20,7	0,00	77,6	-19,2	0,5

*Effect of change

** Moving 12-month averages

Table 13. Unit value index, imports 2010=100

Products by Activity (CPA2008)	December 2021:12	Change	Change	Effect*	Mean** 2021:01- 2021:12	Change	Weights 2020
		% 2021:12/ 2021:11	% 2021:12/ 2020:12	pp 2021:12/ 2020:12		% 2021:01-2021:12/ 2020:01-2020:12	
Total imports	160,1	14,3	34,2	34,2	133,2	14,5	1000
01 Products of agriculture and hunting	127,8	5,7	25,4	0,5	113,9	9,1	21,1
061 Crude petroleum	138,8	-5,2	57,7	2,42	124,9	53,5	50,1
062 Natural gas	137,2	8,3	77,9	0,26	109,4	42,5	4,6
07 Metal ores	190,4	-0,1	32,3	1,29	170,3	30,7	30,5
10 Food products	138,4	3,7	11,5	0,7	130,2	5,1	54,2
13 Textiles	136,7	5,4	15,9	0,23	126,9	8,2	13,8
14 Wearing apparel	139,5	2,8	9,1	0,22	126,3	1,9	21,3
15 Leather and related products	145,3	2,6	9,8	0,08	135,5	4,2	6,8
16 Wood and wood products	151,5	4,4	30,2	0,35	132,6	15	11,1
19 Coke and refined petroleum products	137,3	-4	66,3	1,67	119	44,2	32,5
20 Chemicals and chemical products	158,6	11,1	45,1	3,47	131,3	18,9	76,5
21 Basic pharmaceutical products and preparations	170,3	79,3	92,9	2,66	99,6	15,9	35,6
22 Rubber and plastic products	135,4	3	15,5	0,5	125,7	7,2	30,2
23 Other non-metallic mineral products	136,5	5,1	11	0,17	125,3	2,4	14
241 Basic iron and steel and ferro-alloys	163,6	13,6	85,7	1,21	121,5	38	17,5
244 Basic precious and other non-ferrous metals	272,3	5,1	53,4	2,75	239,7	49,1	32
25 Fabricated metal products	143,6	1,7	13,1	0,47	131,8	3,8	30,8
26 Computer, electronic and optical products	147,1	3,8	12,1	1,33	132,3	2,5	90,9
27 Electrical equipment	123	0,9	7,7	0,47	115,4	3,8	58,5
28 Machinery and equipment	133,4	7,8	10	1,03	123,3	4,7	92,5
29 Motor vehicles and trailers	159,5	2,8	7,7	1,03	152,5	5	97,4
35 Electricity, gas, steam and air conditioning	357,5	222,7	341,8	2,8	115,6	78,4	10,5
38 Waste collection, treatment and disposal services	106,2	1,7	48,9	0,53	90,7	43,9	16,6

*Effect of change

** Moving 12-month averages

Monthly statistics on the international trade in goods, December 2021
2021:K12EN, 28.2.2022

Inquiries:

Kaarna, Anssi

tel. +358 40 332 8153

Telasuo, Christina

tel. +358 40 332 1828

E-mail: forename.surname@tulli.fi

The preliminary statistics and monthly statistics on the international trade for January 2022 will be published on the following dates:

Preliminary statistics 2022:E01 8.3.2022

Monthly statistics 2022:K01 31.3.2022

More specific data on countries and goods, as well as statistics on logistics, are available free of charge via the the Uljas statistical database (ULJAS) uljas.tulli.fi

ISSN 1796-0479 = Official Statistics of Finland (pdf)

ISSN 2342-2335 = Monthly statistics on the international trade in goods (online)

Contact information:

Finnish Customs
Statistics

Opastinsilta 12
PO Box 512
FI-00101 Helsinki

Exchange + 358 295 5200
Statistics service + 358 295 52335
statistics@tulli.fi